

Glutaredoxin 1 mediates the protective effect of steady laminar flow on endothelial cells against oxidative stress-induced apoptosis via inhibiting Bim

Yao Li^{a,1}, Meng Ren^{a,1}, Xiaoqun Wang^{b,1}, Xingxing Cui^a, Hongmei Zhao^a, Chuanrong Zhao^c, Jing Zhou^c, Yanan Guo^d, Yi Hu^{e,*}, Chen Yan^d, Bradford Berk^d, Jing Wang^{a,*}

^a *State Key Laboratory of Medical Molecular Biology, Institute of Basic Medical Sciences, Chinese Academy of Medical Sciences, Department of Pathophysiology, Peking Union Medical College, Tsinghua University, Beijing 100005, China*

^b *Department of Cardiology, Ruijin Hospital, Shanghai Jiao-Tong University school of medicine, Shanghai, 200025, China*

^c *Department of Physiology and Pathophysiology, School of Basic Medical Sciences, Peking University, Beijing, China; Key Laboratory of Molecular Cardiovascular Science, Ministry of Education, Beijing, China*

^d *Aab Cardiovascular Research Institute, School of Medicine and Dentistry, University of Rochester, Rochester, NY 14642, USA*

^e *CAS Key Laboratory for Biomedical Effects of Nanomaterials and Nanosafety, Multi-disciplinary Research Division, Institute of High Energy Physics, Chinese Academy of Sciences (CAS), Beijing 100049, China*

¹ These authors contributed equally to this work.

*Corresponding author

E-mail addresses: huyi@ihep.ac.cn (Y. Hu), wangjing@ibms.pumc.edu.cn (J. Wang).

Figure 2A

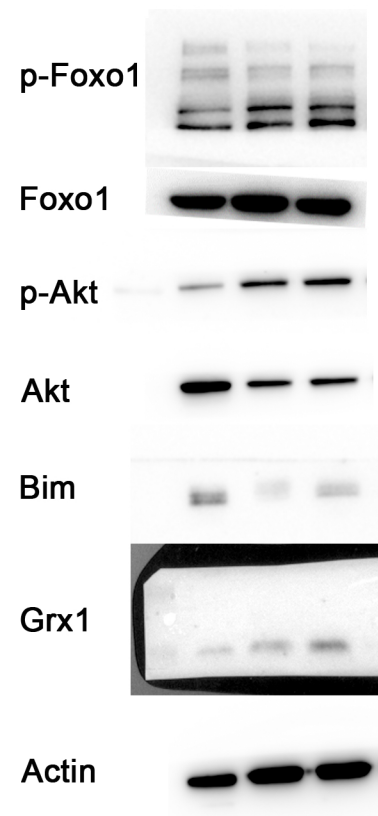


Figure 2B

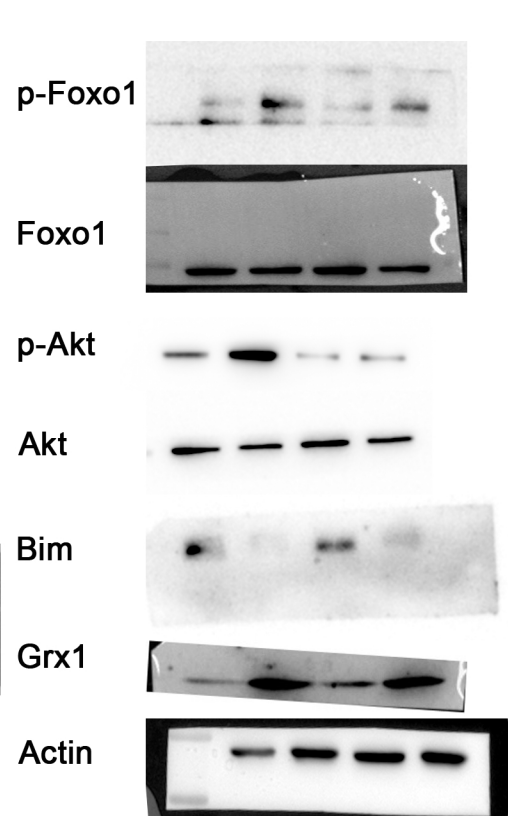


Figure 2C

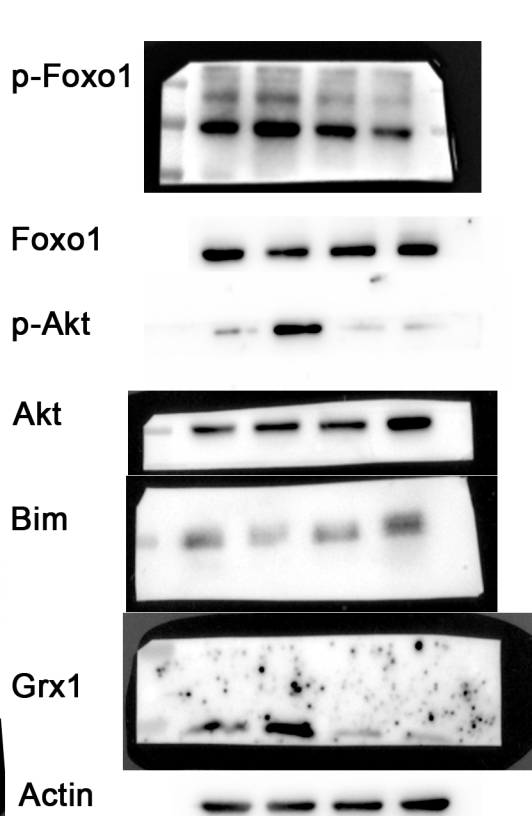


Figure 3B

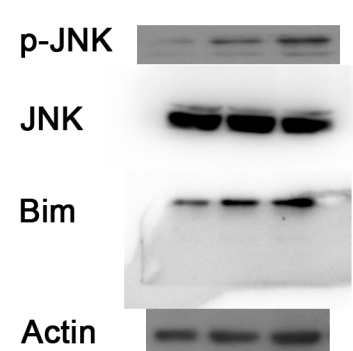


Figure 3C

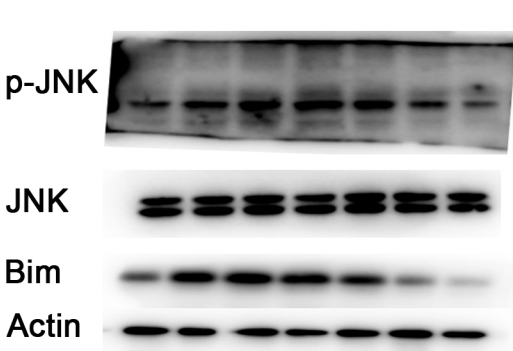


Figure 3D

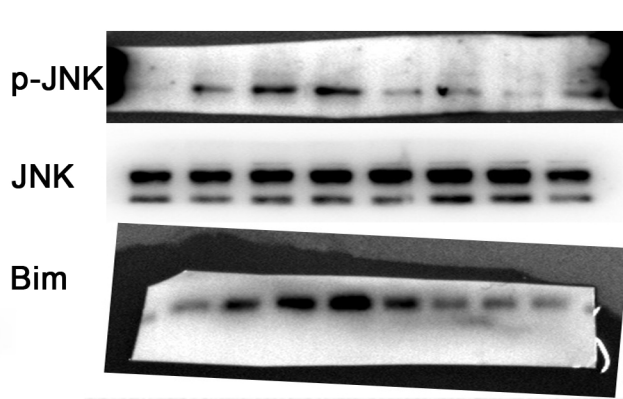


Figure 4A

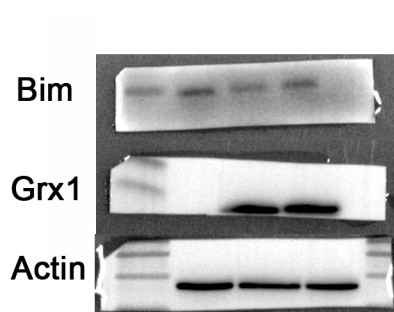


Figure 5B

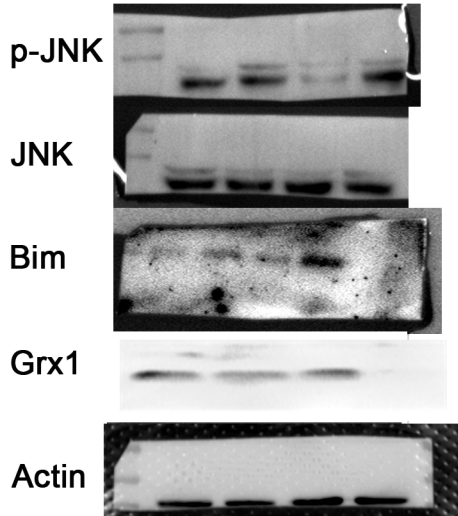


Figure 5C

