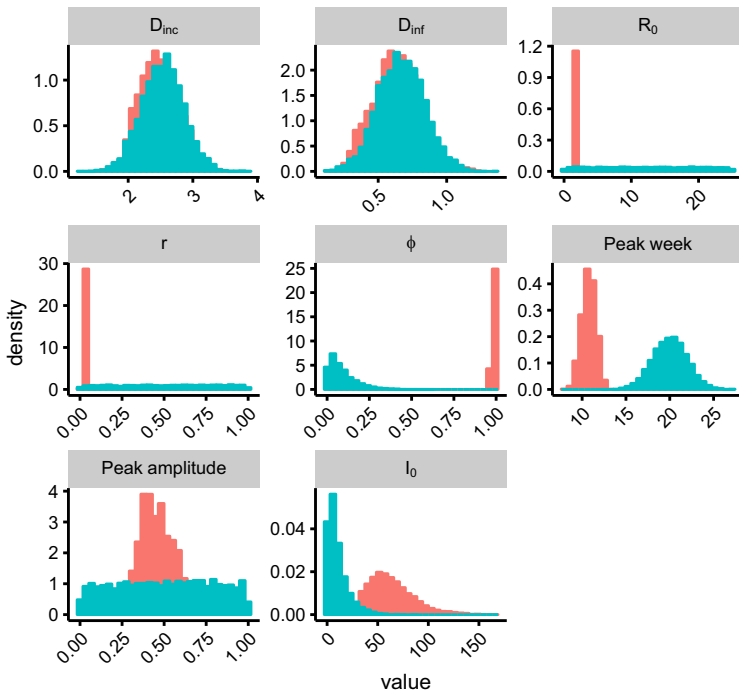


distribution ■ posterior ■ prior



Supplementary Figure 3. Parameter estimates for the fitted mathematical model

Posterior and prior parameter probability density plots for the model. D_{inc} : duration between mosquito infection caused by a human and subsequent human case to become infectious. D_{inf} : duration of human infectiousness. R_0 : basic reproduction number. r : proportion of cases reported. ϕ : overdispersion of reporting. Peak week: Week of peak Zika transmission. Peak amplitude: Peak amplitude (as proportion of average transmission rate), I_0 : initial number of infectives.