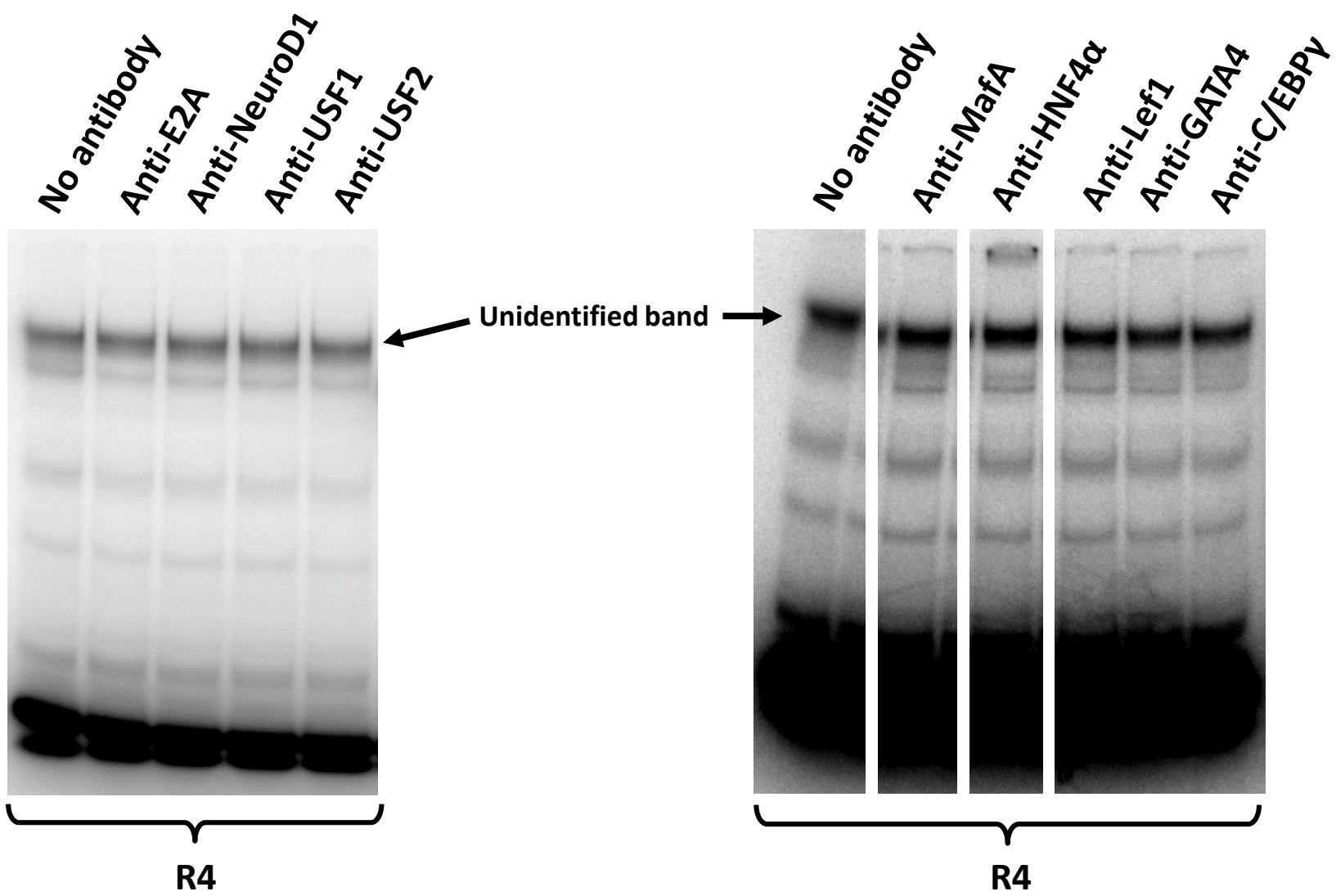


Supplementary Figure 1



EMSAs were conducted with the human R4 DNA probe and nuclear extracts from 832/13 cells. The lanes in the right panel were from non-adjacent lanes on the same gel. Included in binding reactions were antibodies against E2A (Santa Cruz sc-349, RRID: AB_675504), NeuroD1 (sc 1084, RRID: AB_630922), USF1 (sc-229 X, RRID: AB_2213989), USF2 (sc-861 X, RRID: AB_632579), MafA (Abcam ab26405, RRID: AB_776146), HNF4α (sc-8987 X, RRID: AB_2116913), Lef1 (Cell Signaling Technology 2230P, RRID: AB_10829440), GATA4 (sc-25310, RRID: AB_627667), and C/EBPγ (sc-25769, RRID: AB_2078330). As none of the antibodies markedly affected the intensity of the major band, the protein causing the major band remains unidentified.