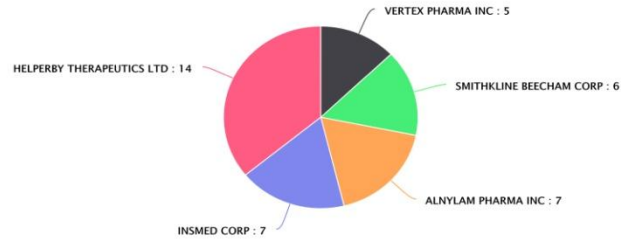
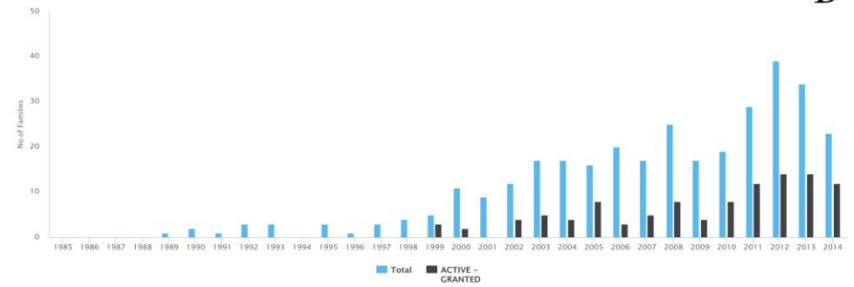


# Buruli ulcer

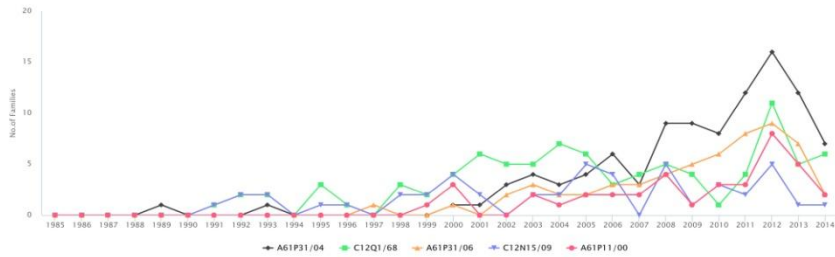
A



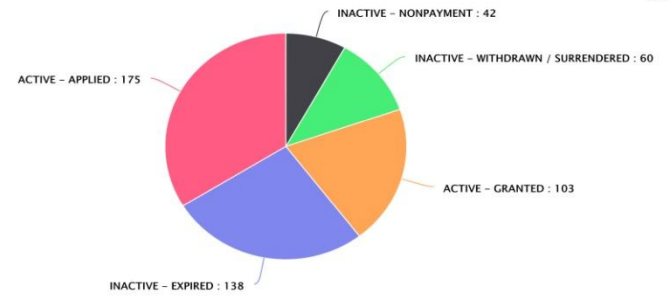
B



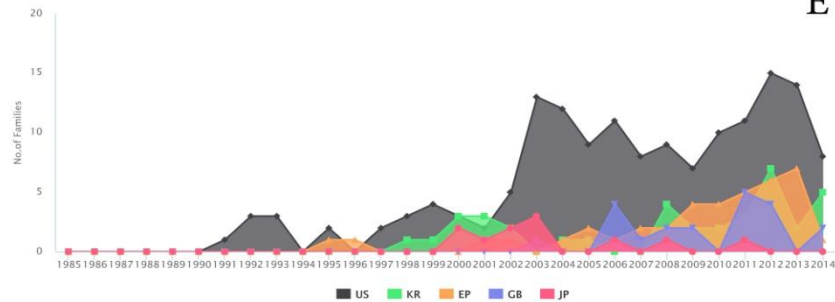
C



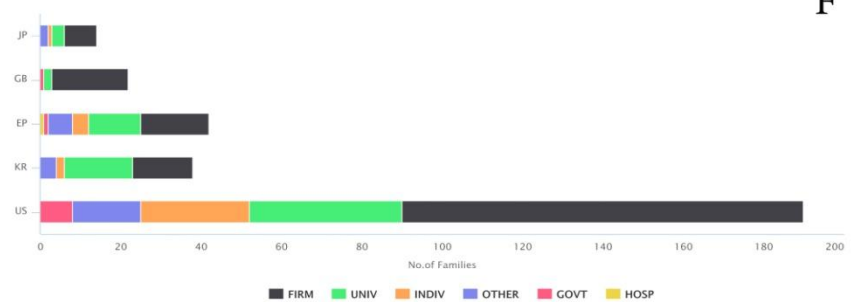
D



E

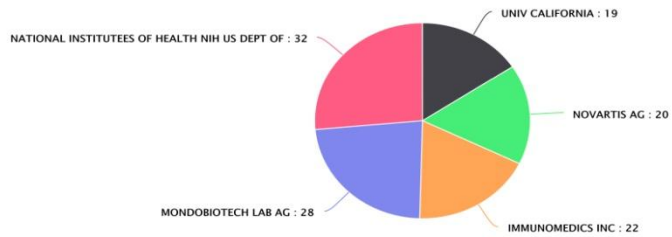


F

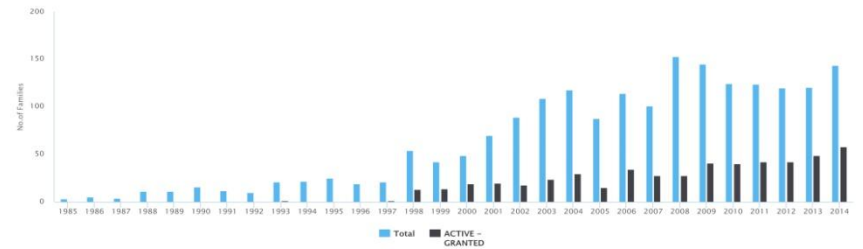


# Chagas disease

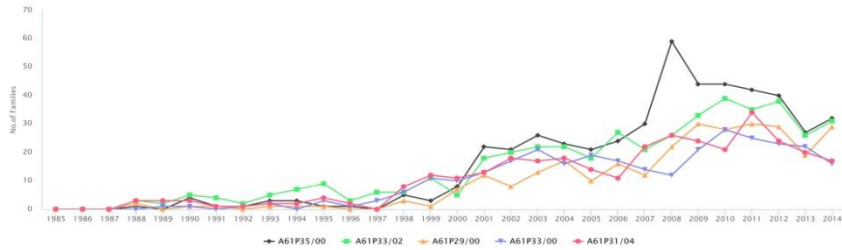
A



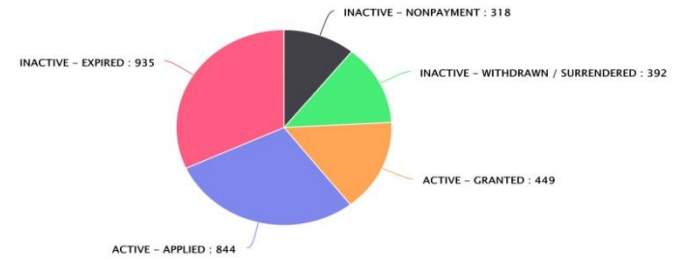
B



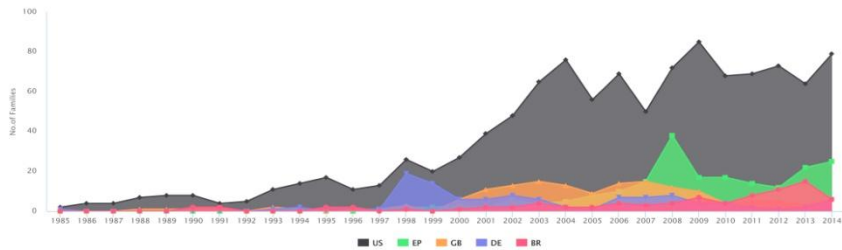
C



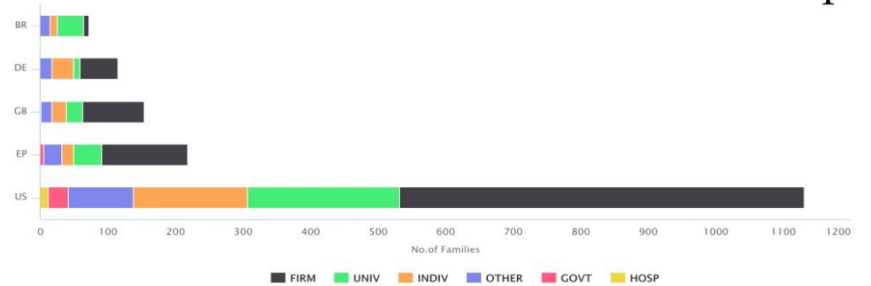
D



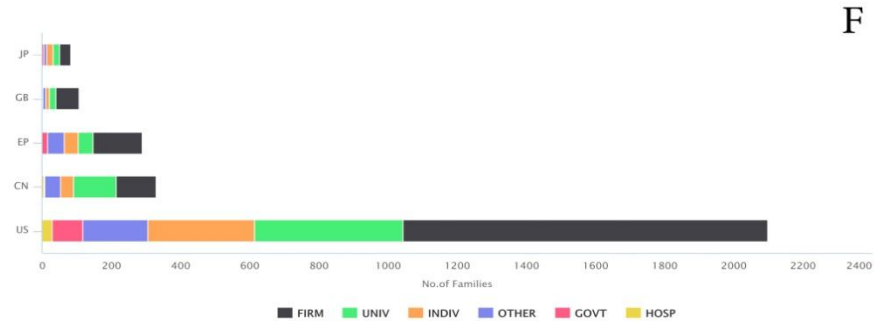
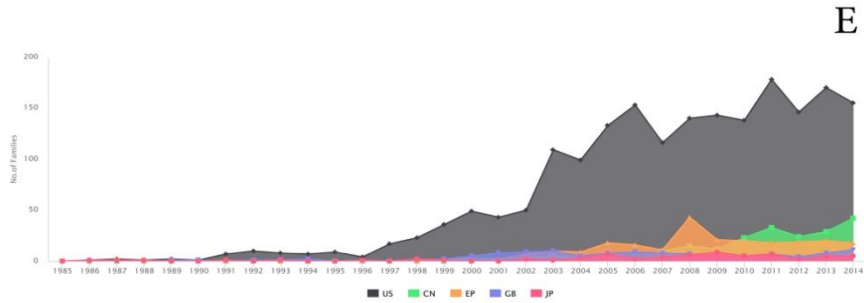
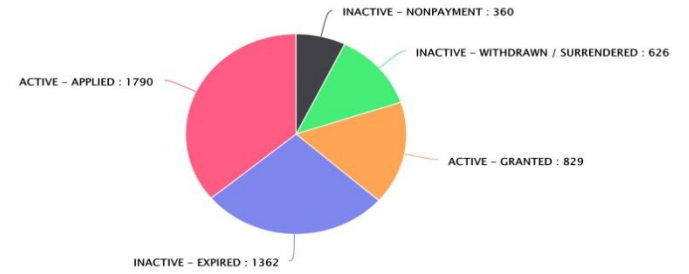
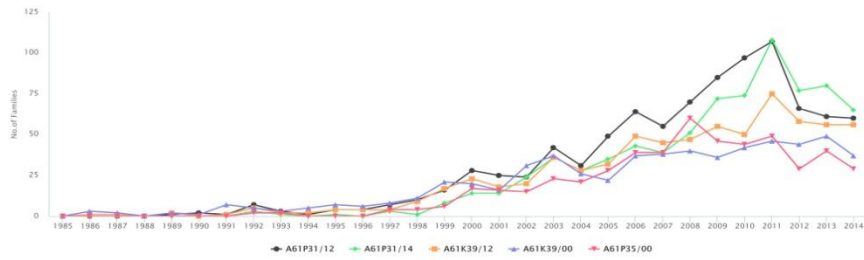
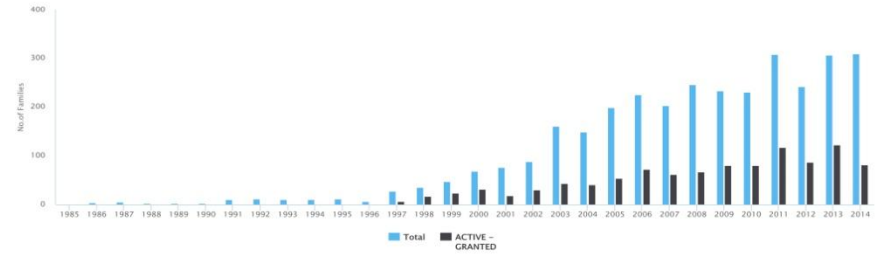
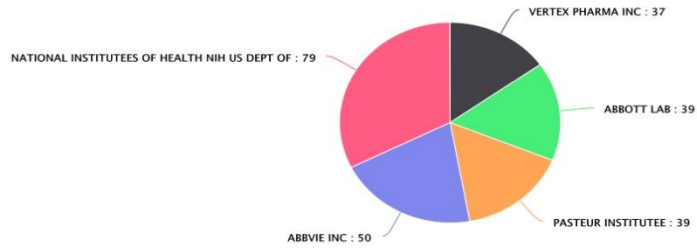
E



F

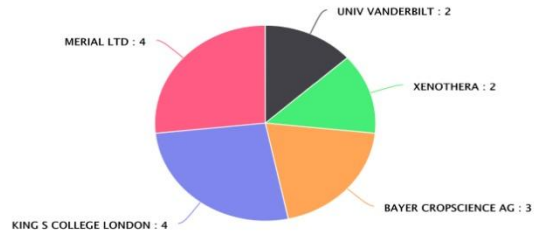


# Dengue

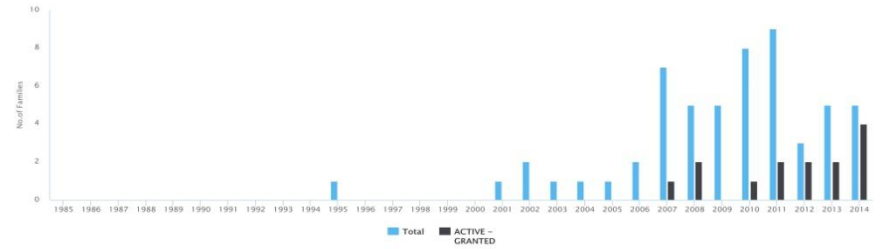


# Dracunculiasis

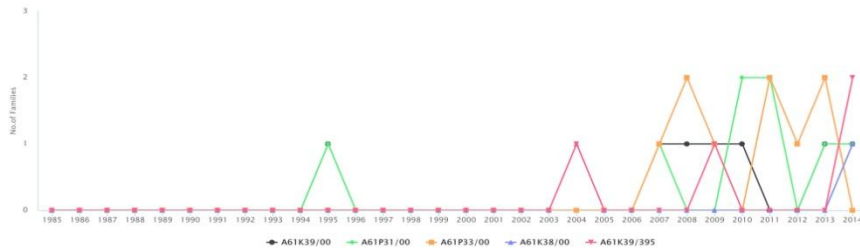
A



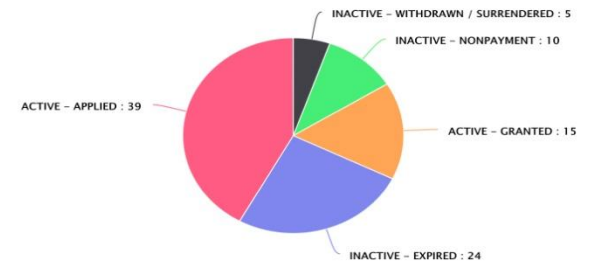
B



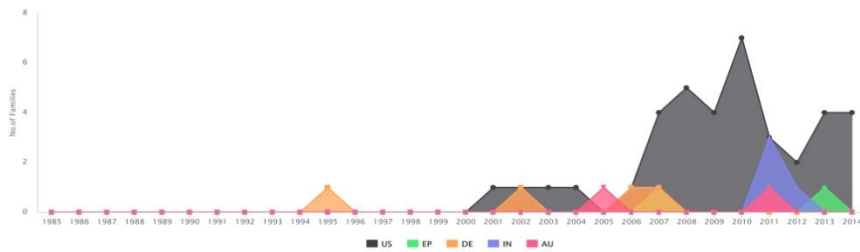
C



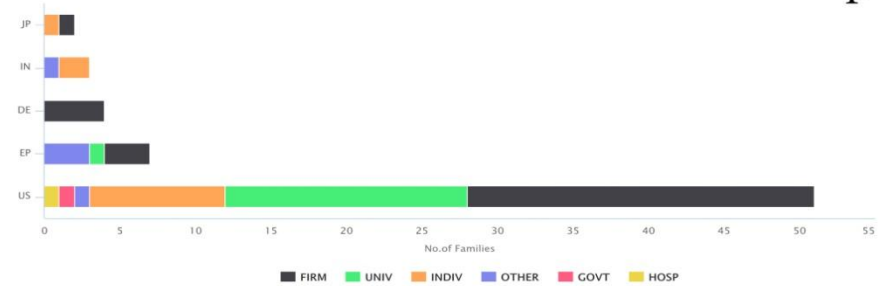
D



E

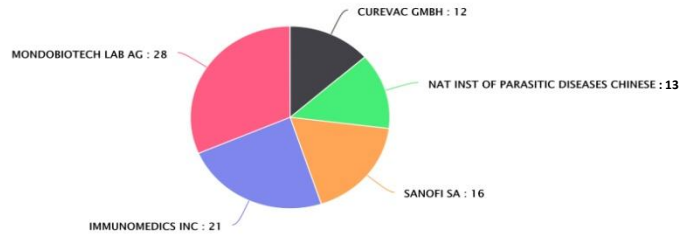


F

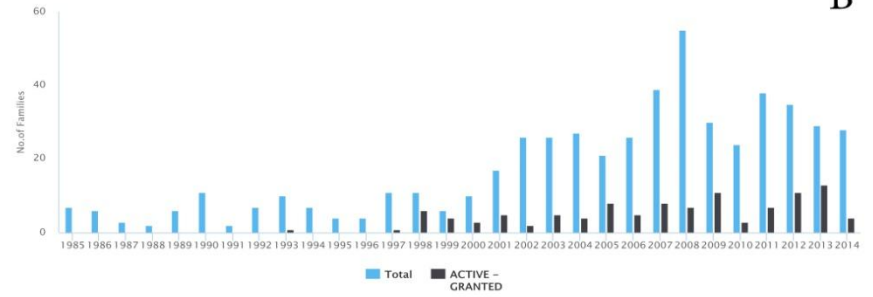


# Echinococcosis

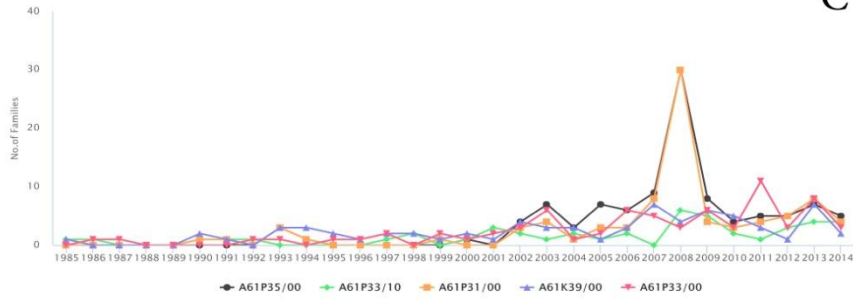
A



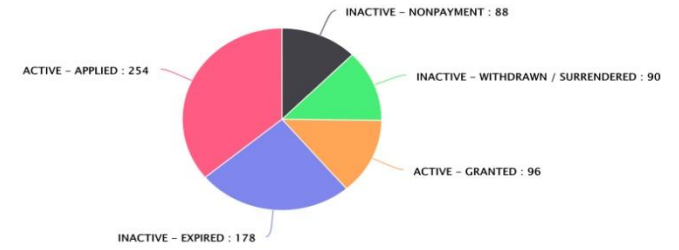
B



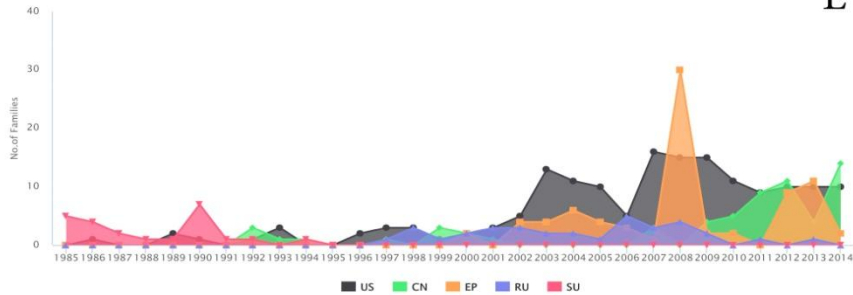
C



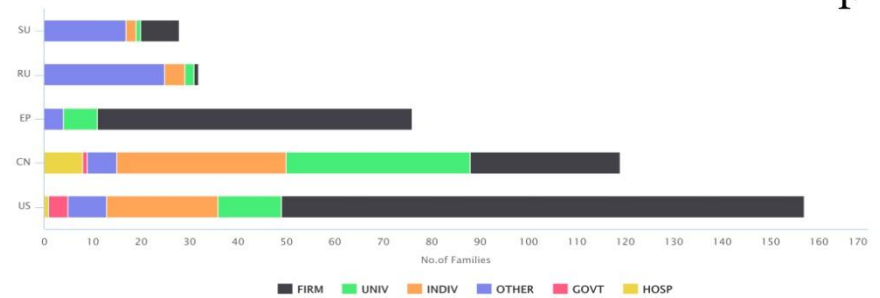
D



E

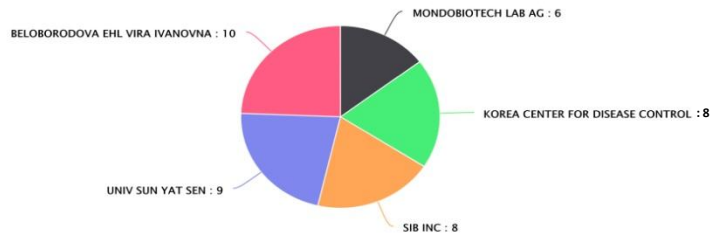


F

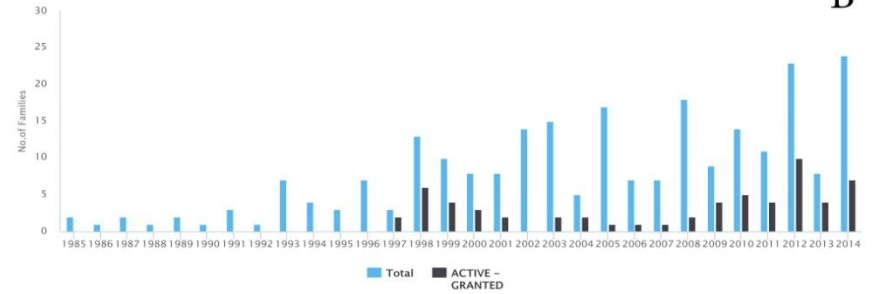


# Food-borne trematodiasis

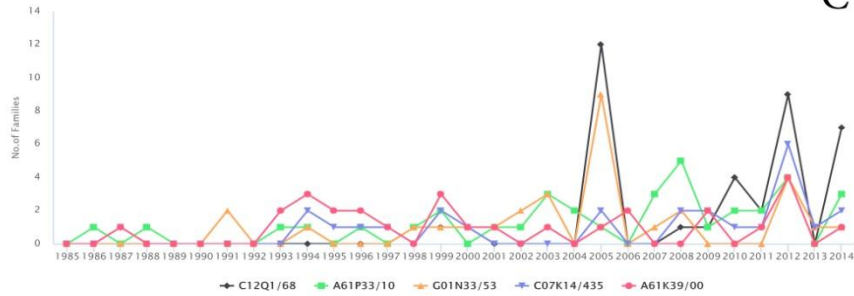
A



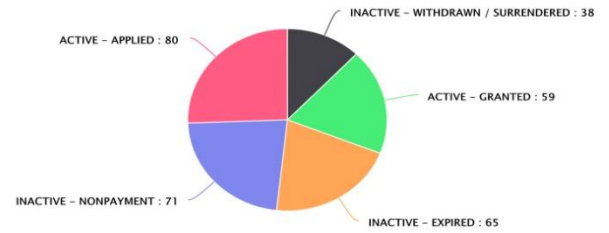
B



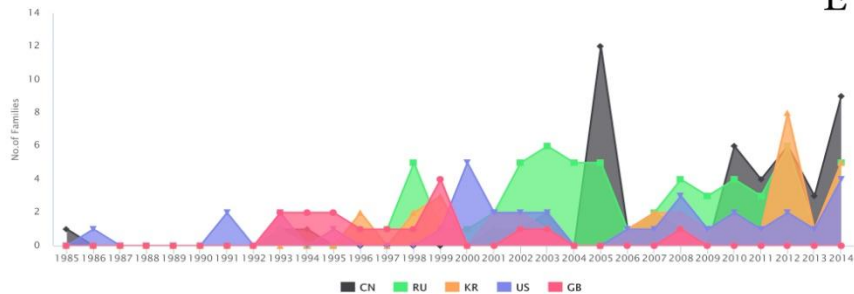
C



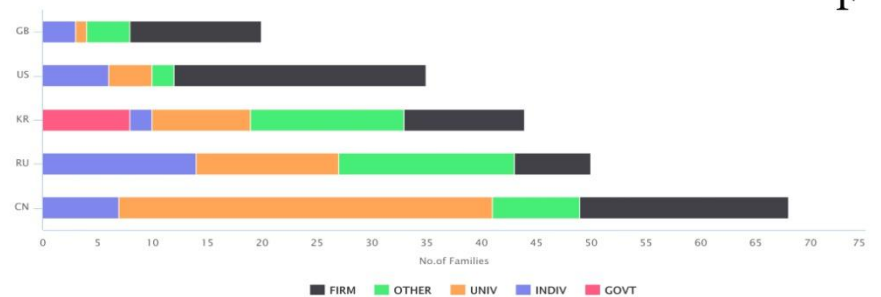
D



E

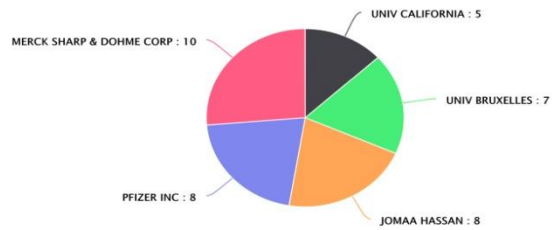


F

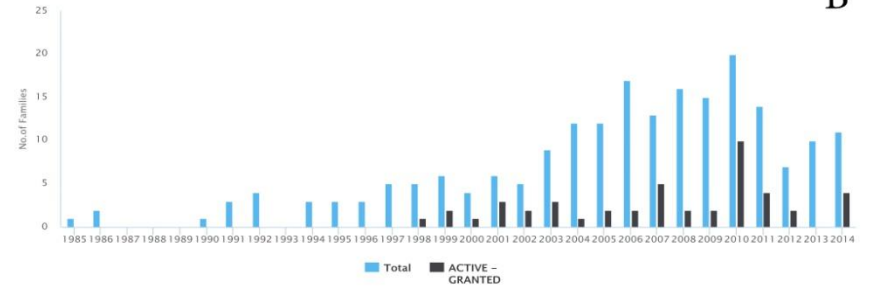


# Human African trypanosomiasis

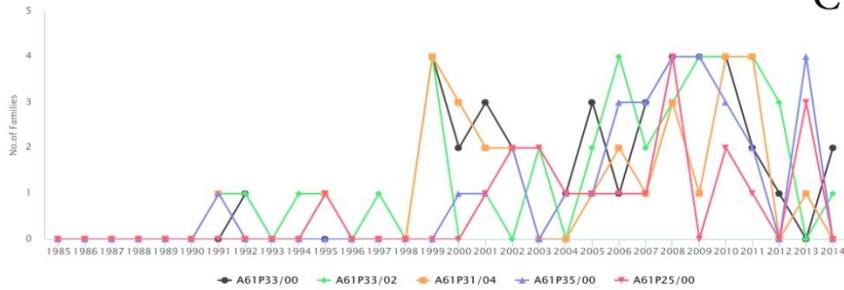
A



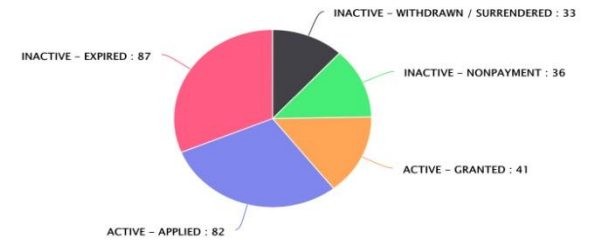
B



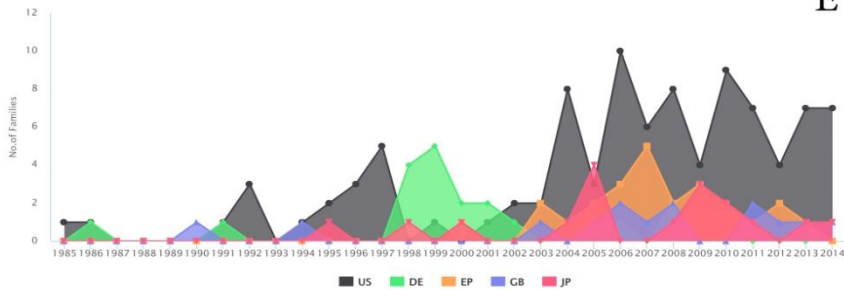
C



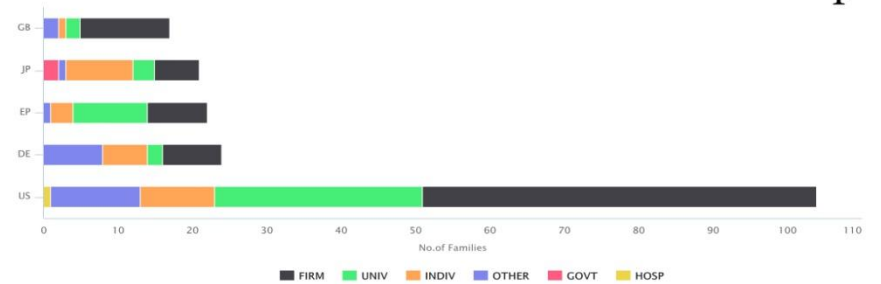
D



E

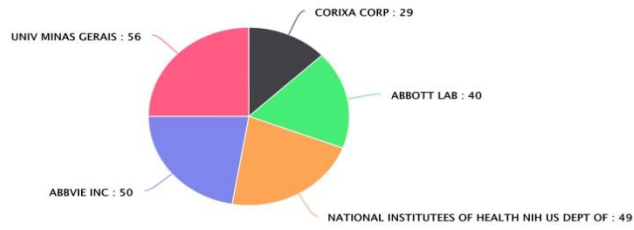


F

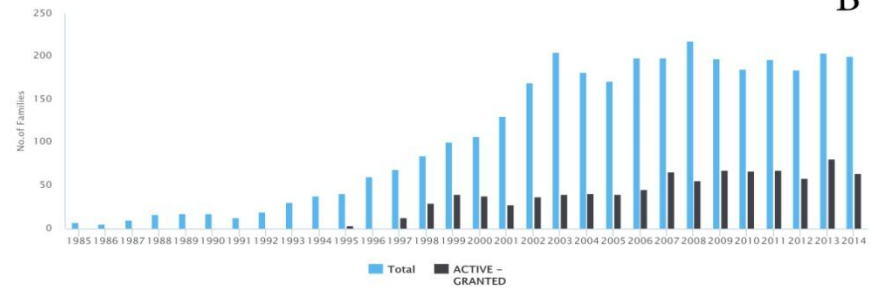


# Leishmaniasis

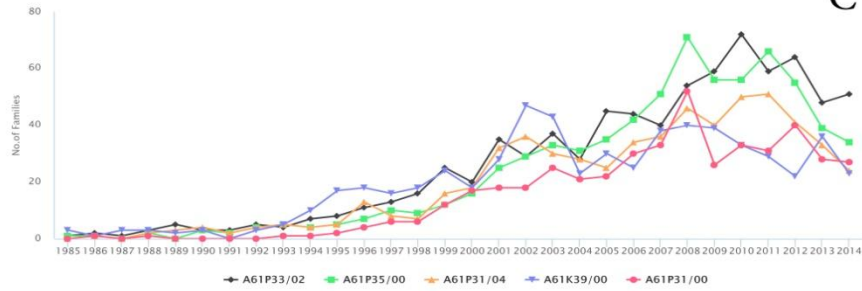
A



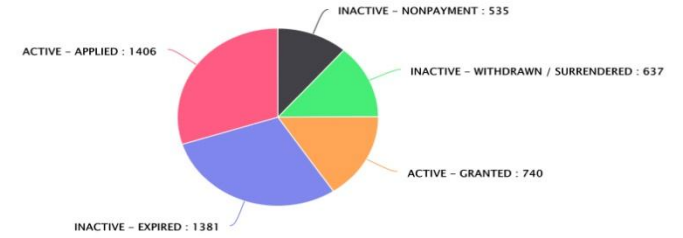
B



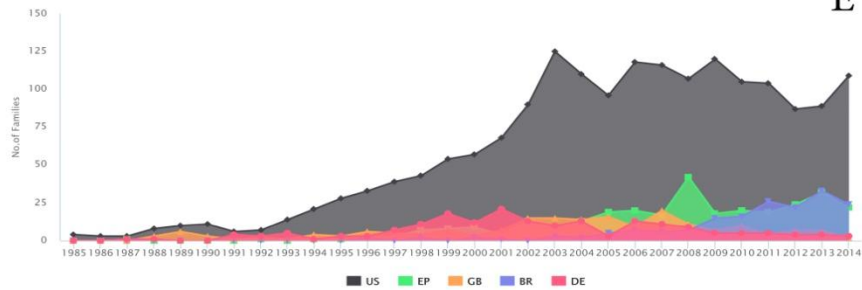
C



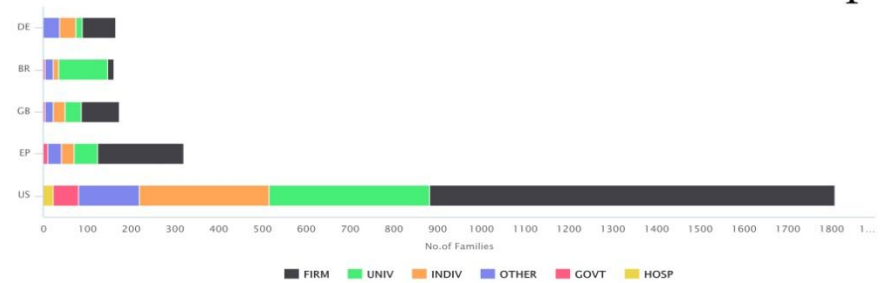
D



E



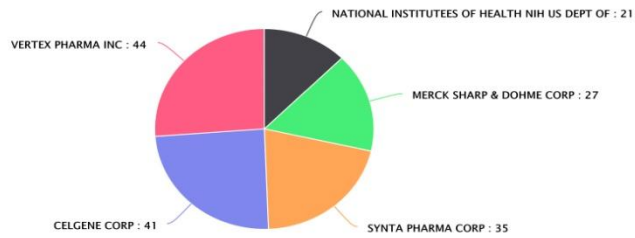
F



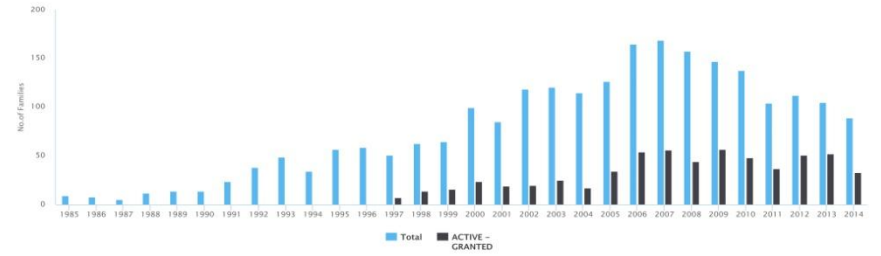


# Leprosy

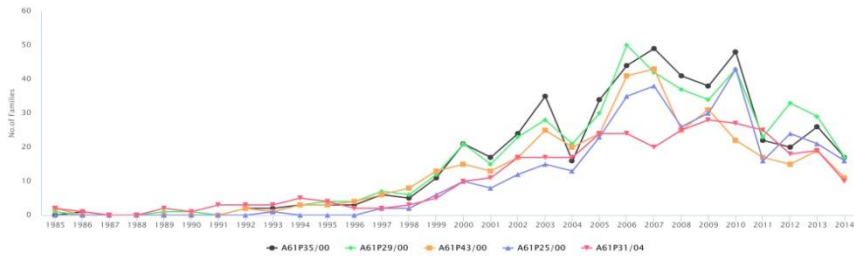
A



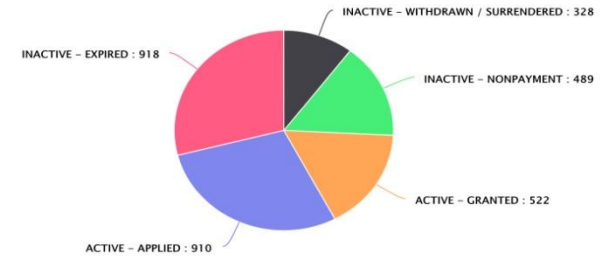
B



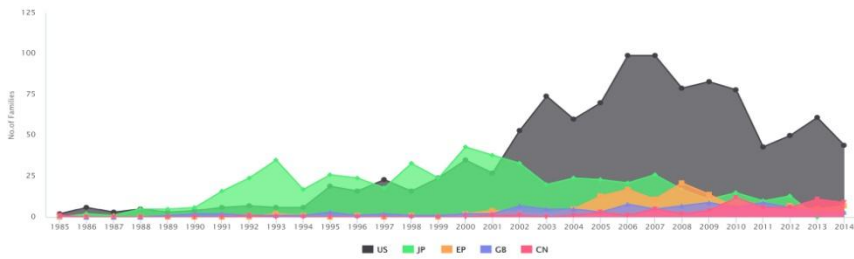
C



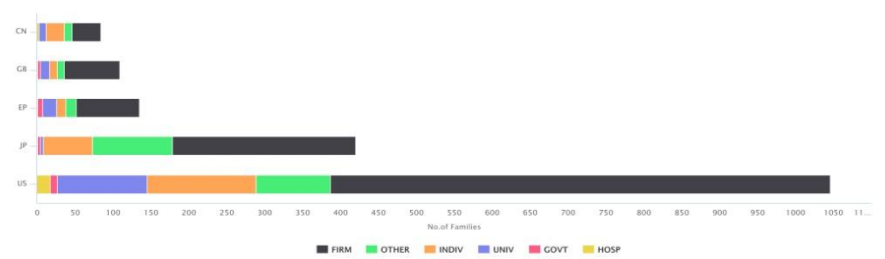
D



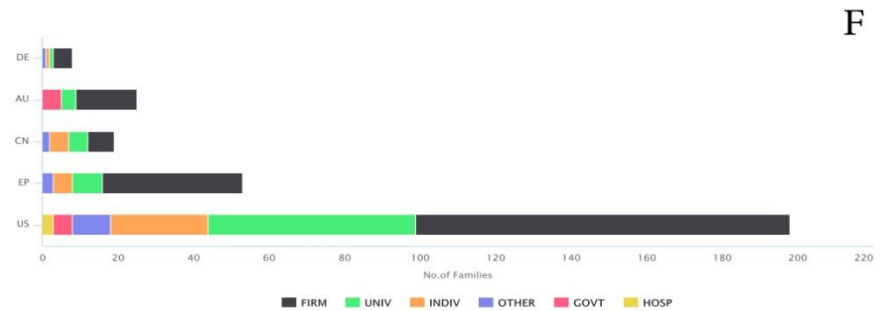
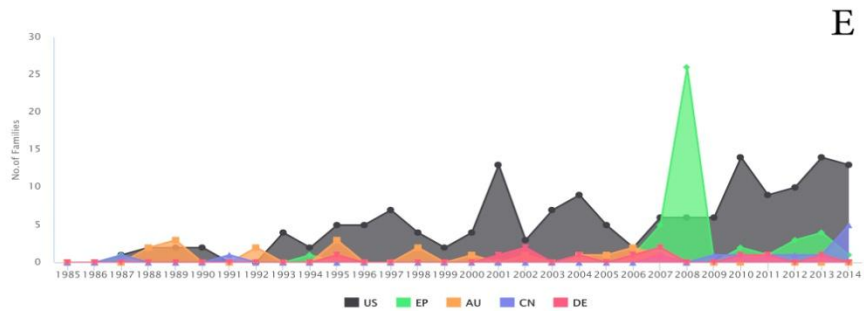
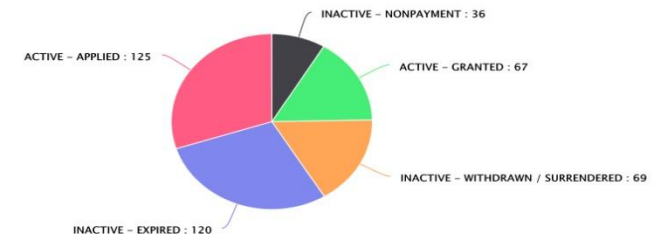
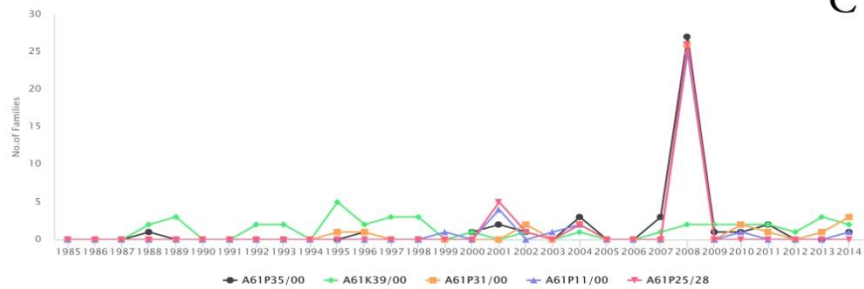
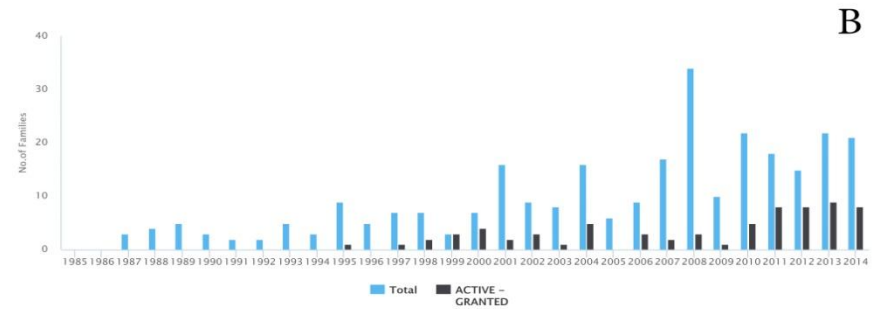
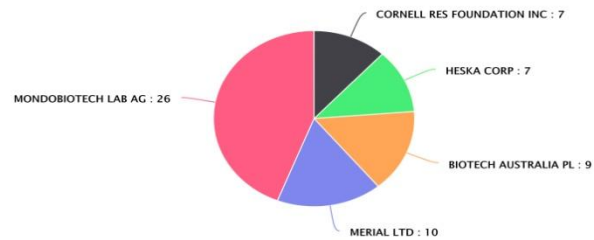
E



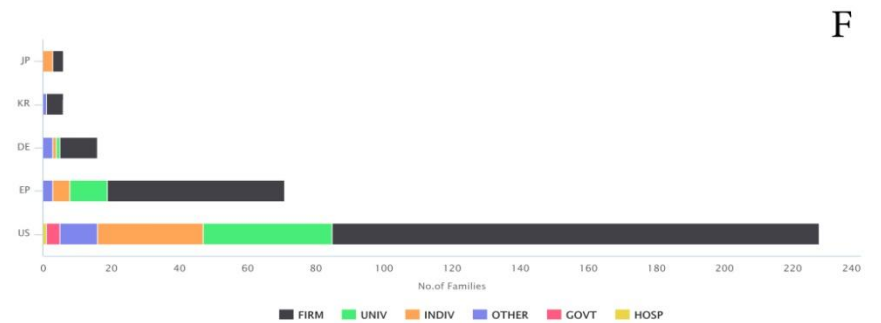
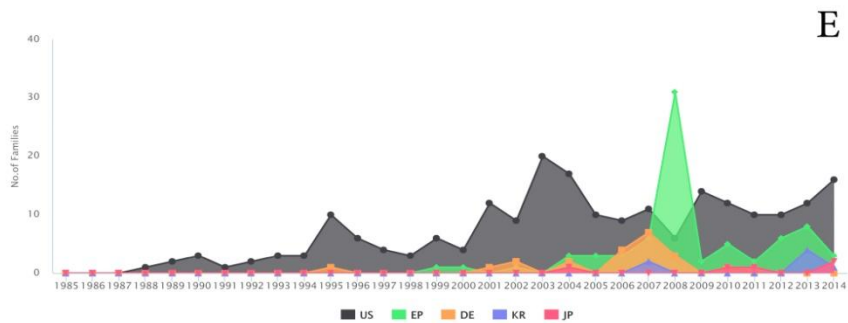
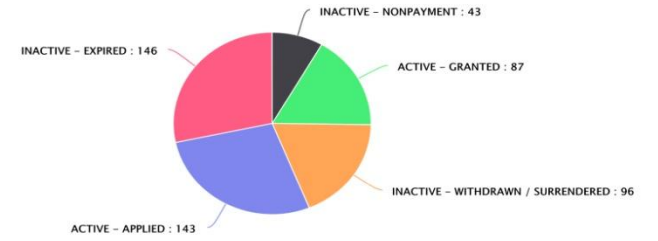
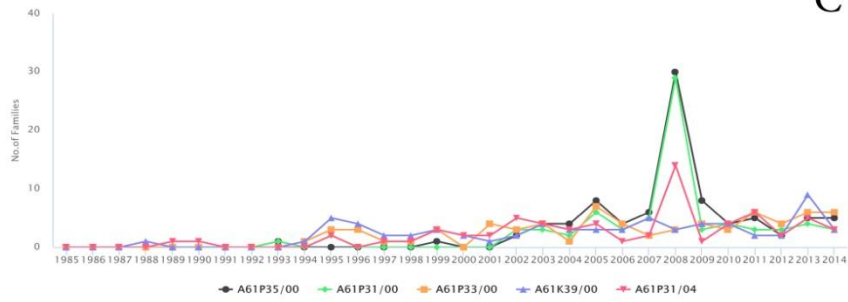
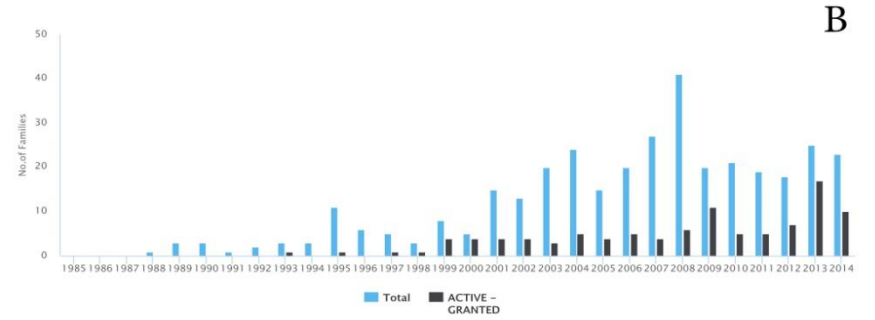
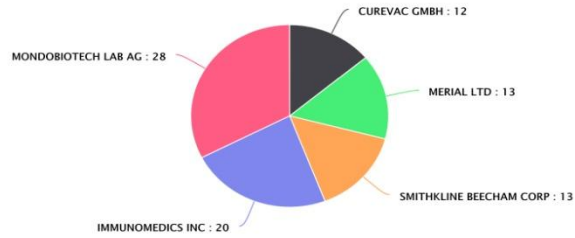
F



# Lymphatic filariasis

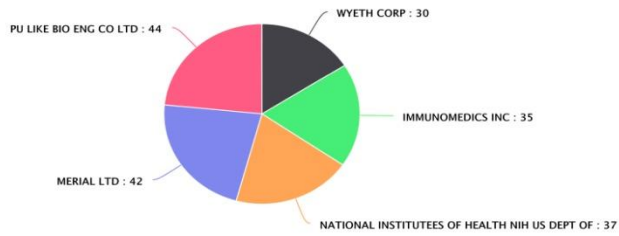


# Onchocerciasis

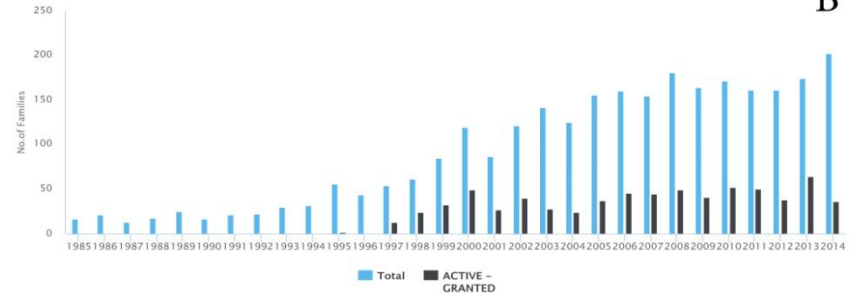


# Rabies

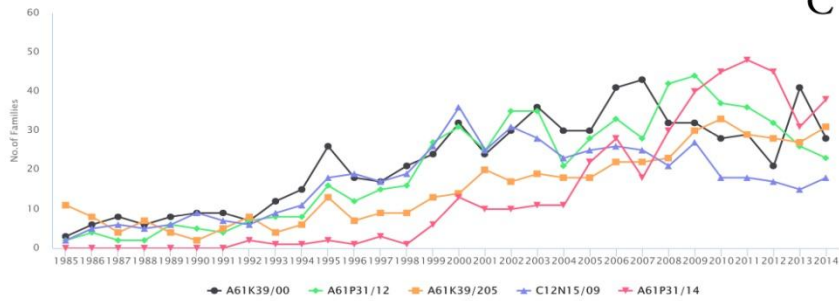
A



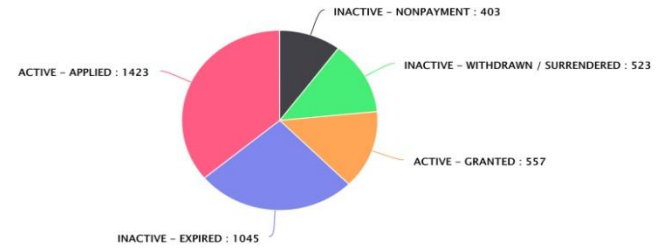
B



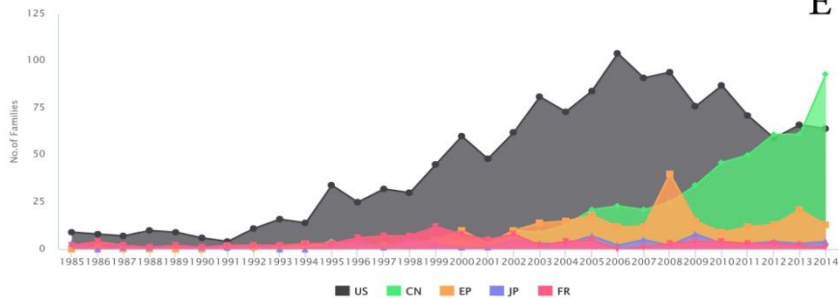
C



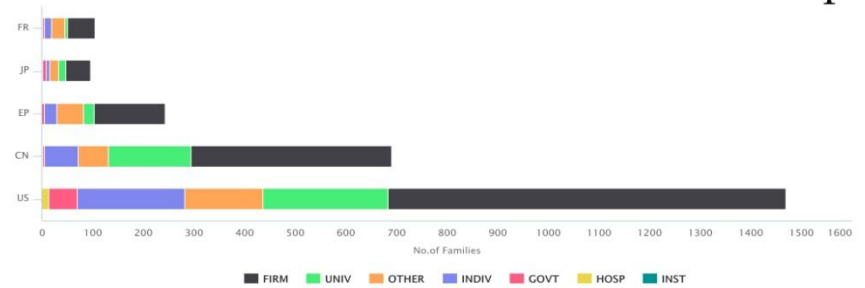
D



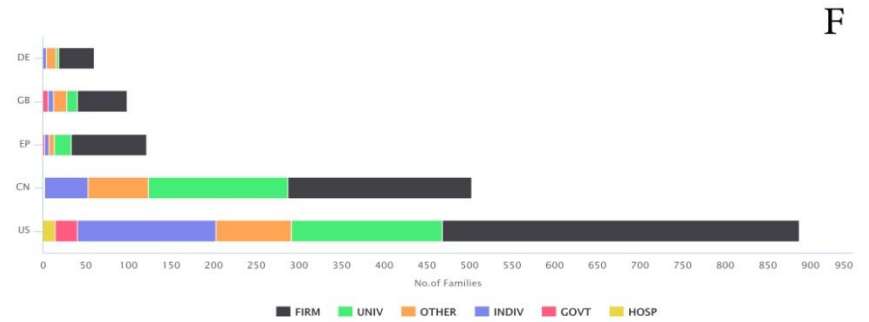
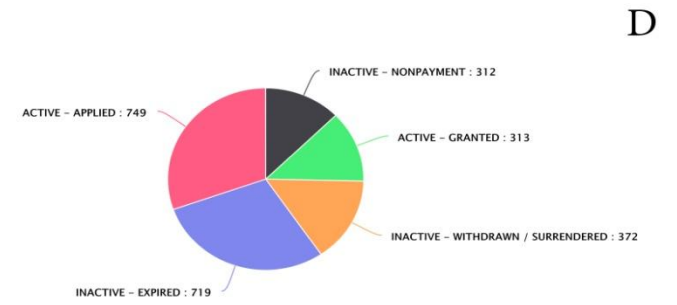
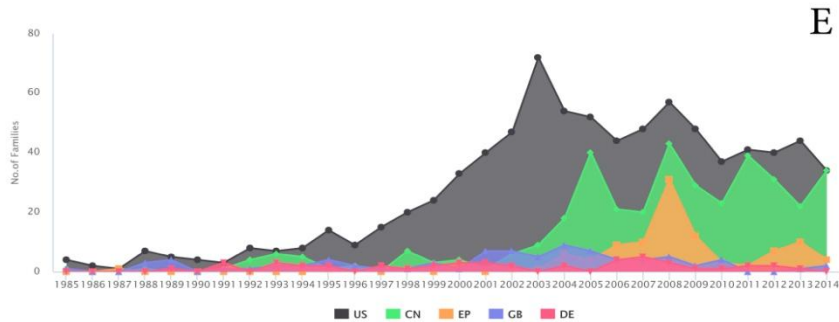
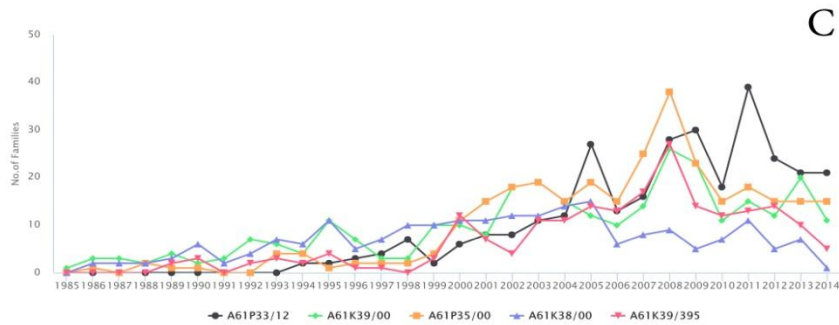
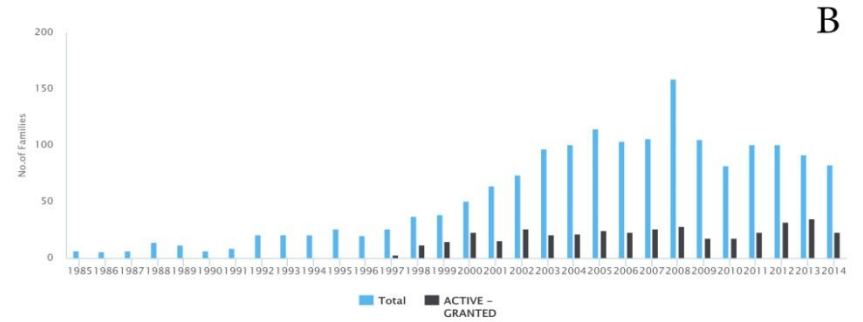
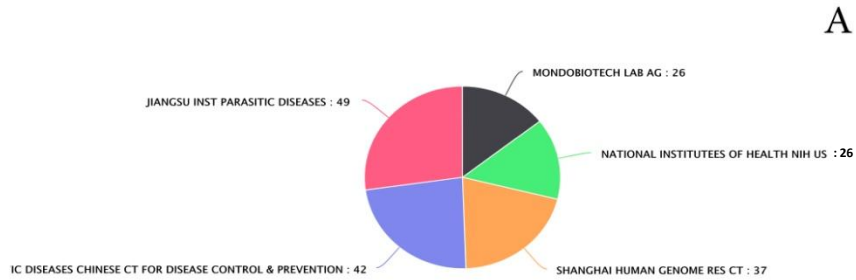
E



F



# Schistosomiasis

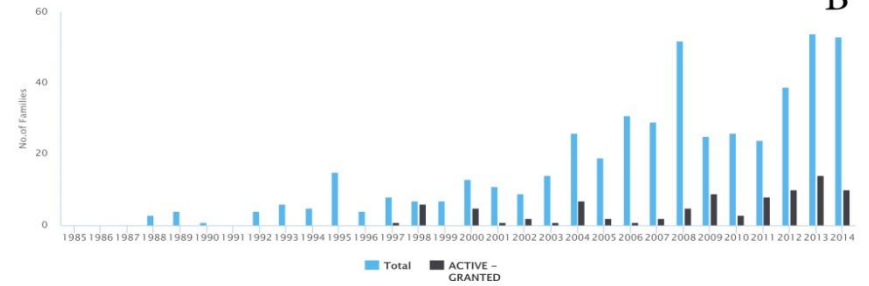


# Soil-transmitted helminth infections

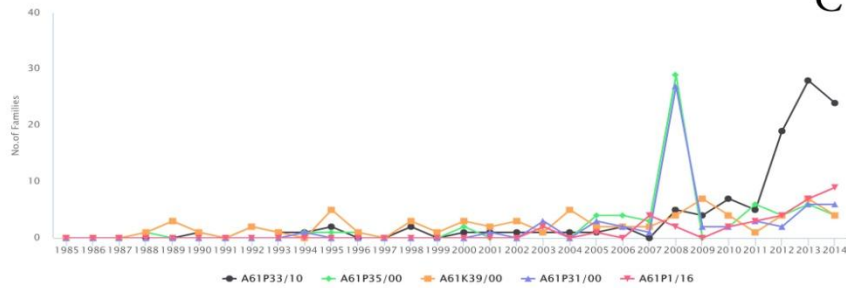
A



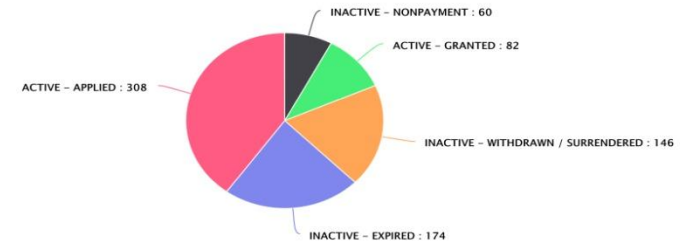
B



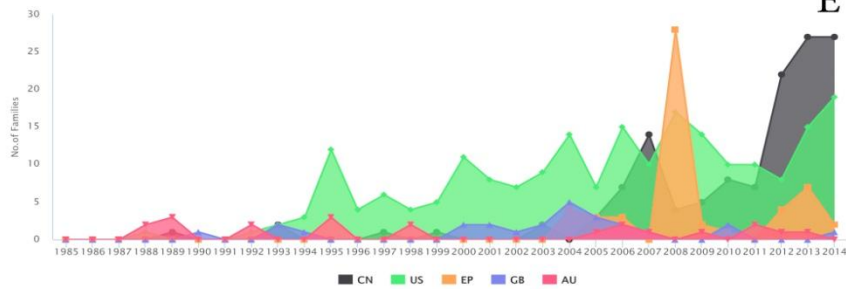
C



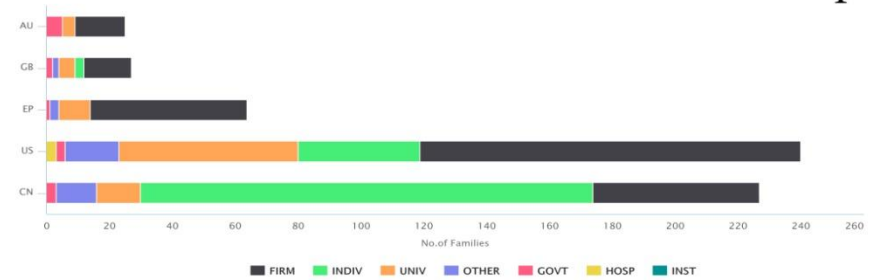
D



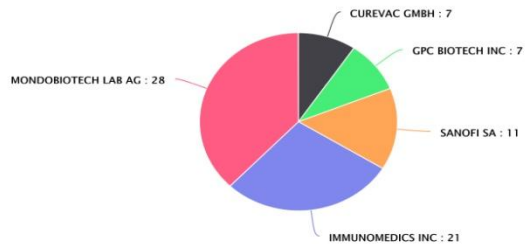
E



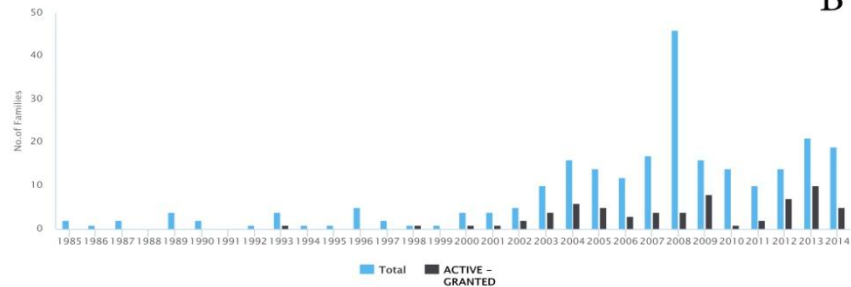
F



# Taeniasis

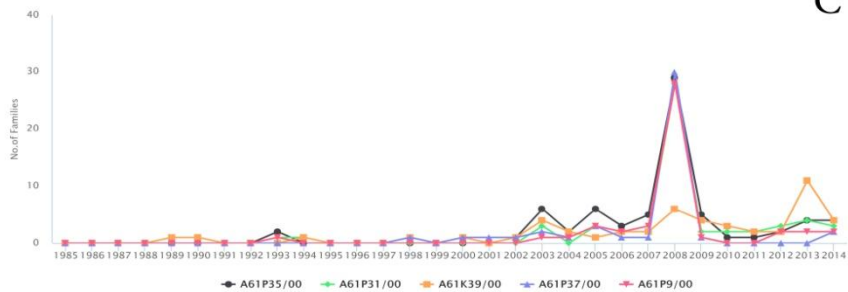


A

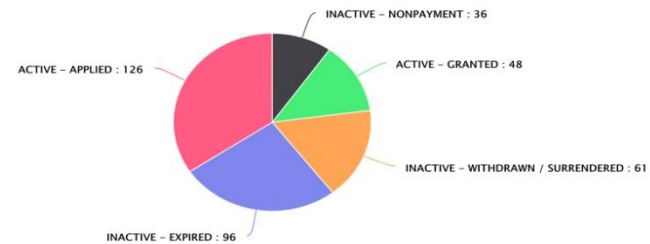


B

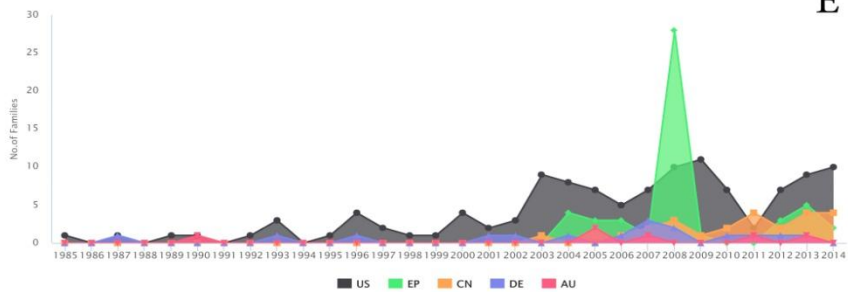
C



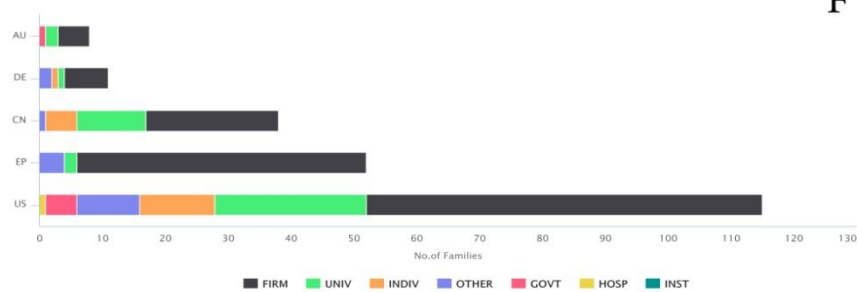
D



E

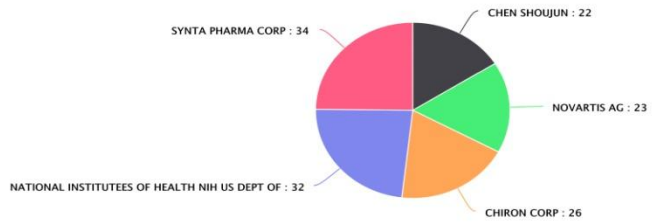


F

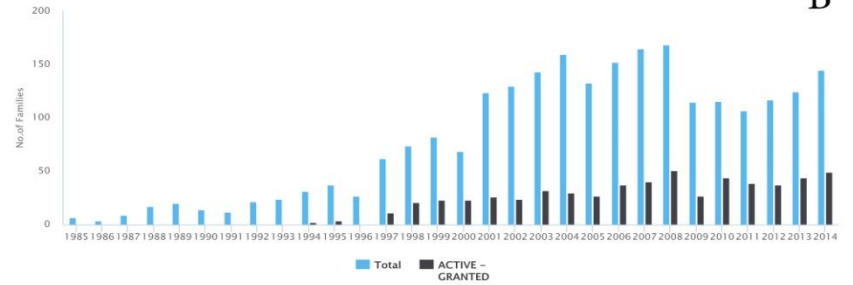


# Trachoma

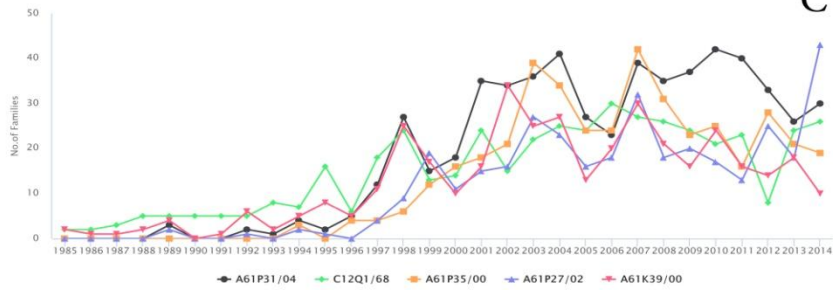
A



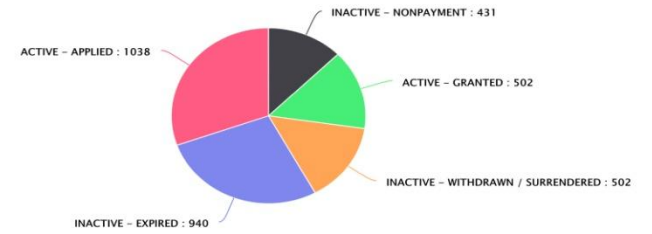
B



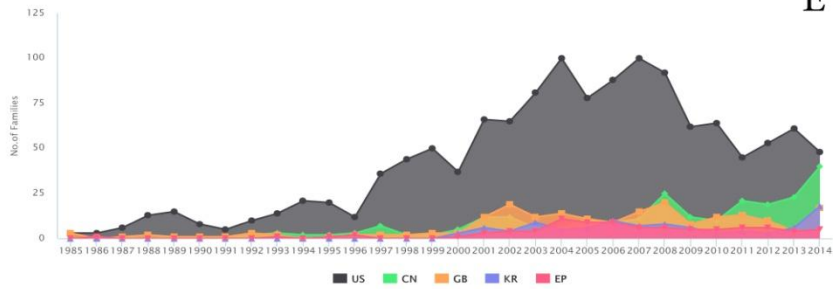
C



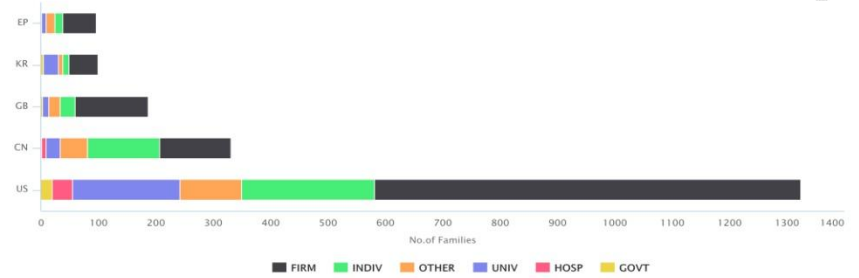
D



E



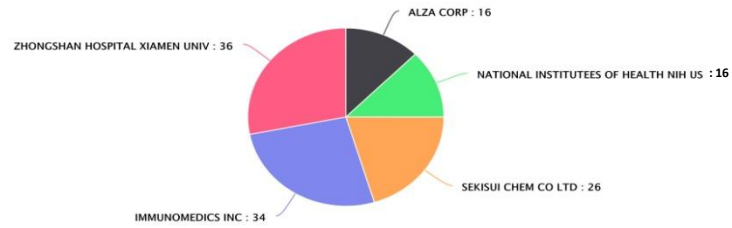
F



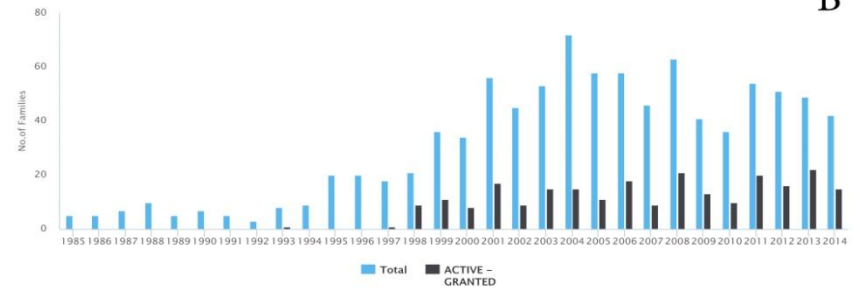


# Yaws

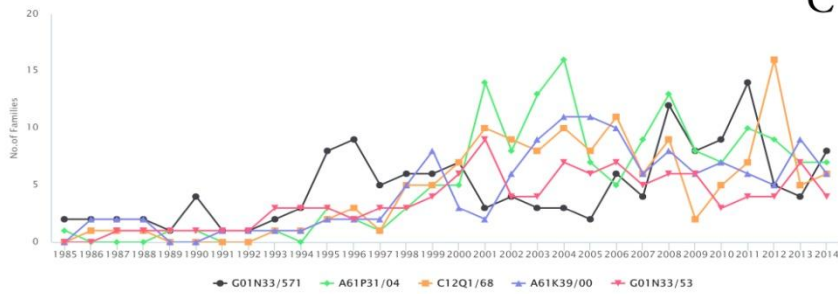
A



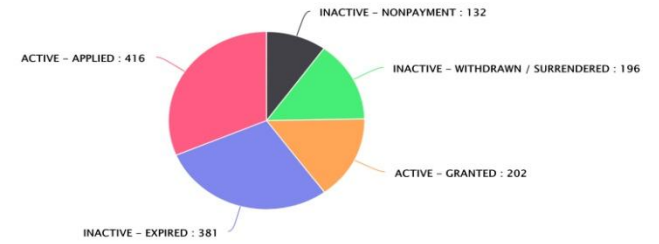
B



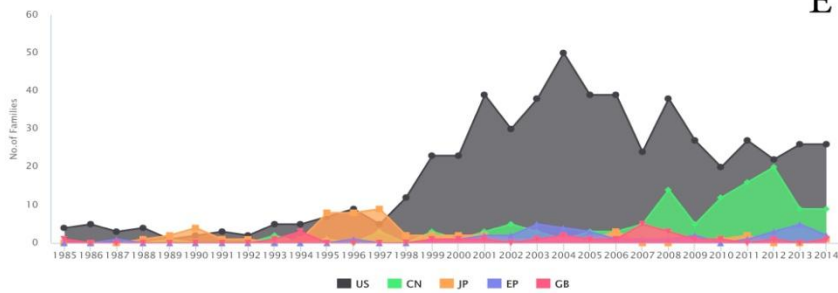
C



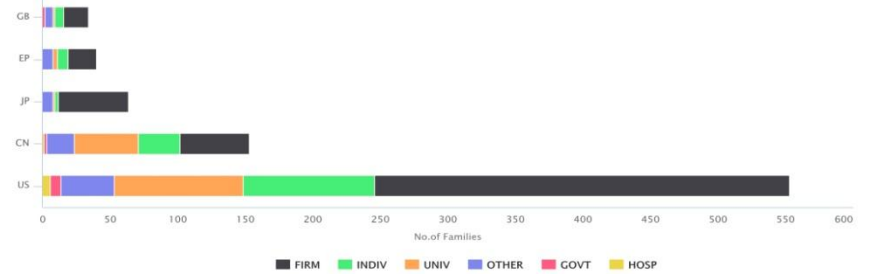
D



E

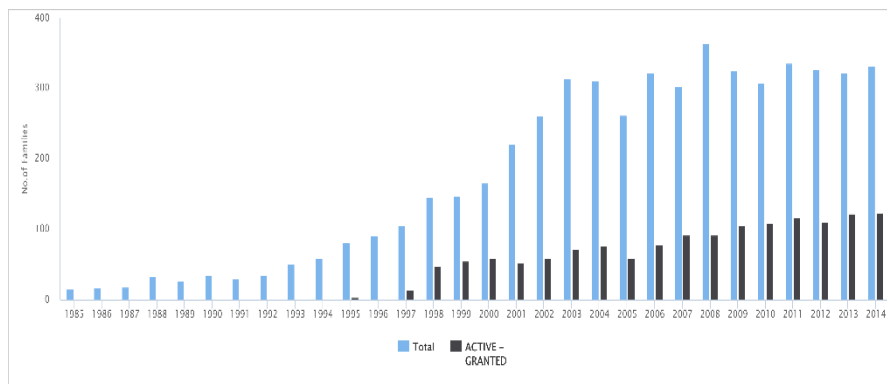


F

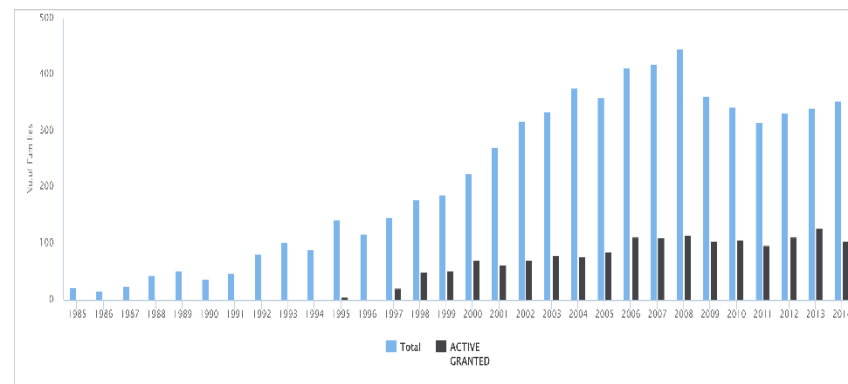


# Innovative and Intensified Disease Management vs. Preventive Chemotherapy and Transmission Control

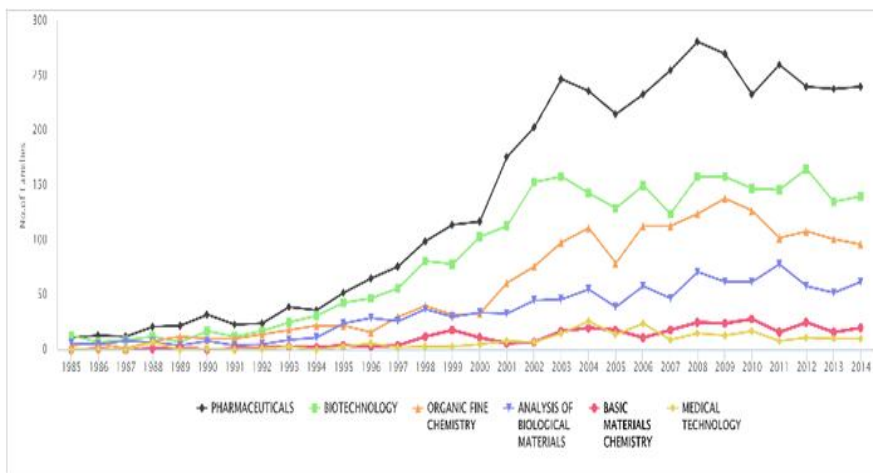
G



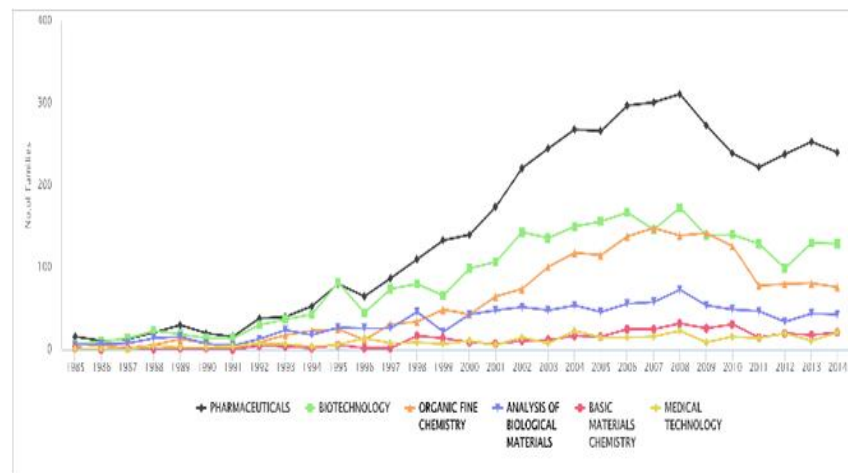
H



I



J



## Additional file 2

- A. Number of patent families for the top five assignees.
- B. Trend of total number of patent families and granted patent families by year.
- C. Number of patent families by top five International Patent Classification subgroups, by years.
- D. Current legal status of patents. Record numbers referring to the number of patent families.
- E. Number of patent families for the top five priority countries, by years.
- F. Number of patent families for the top five priority countries by types of assignee (unassigned patent families were not presented).
- G. Trend of total number of patent families and granted patent families by year for diseases of Innovative and Intensified Disease Management (Buruli ulcer, Chagas disease, Human African trypanosomiasis, Leishmaniasis, Yaws)
- H. Trend of total number of patent families and granted patent families by year for diseases of Preventive chemotherapy and transmission control (Dracunculiasis, Leprosy, Lymphatic filariasis, Onchocerciasis, Schistosomiasis, Soil-transmitted helminths, Trachoma)
- I. Technological fields of patent families over time for diseases of Innovative and Intensified Disease Management (Buruli ulcer, Chagas disease, Human African trypanosomiasis, Leishmaniasis, Yaws)
- J. Technological fields of patent families over time for diseases of Preventive chemotherapy and transmission control (Dracunculiasis, Leprosy, Lymphatic filariasis, Onchocerciasis, Schistosomiasis, Soil-transmitted helminths, Trachoma)

# Additional file 2

## **ABBREVIATIONS:**

firm (firms), indiv (individuals), univ (universities), inst (non-profit institutions), govt (governments) and hosp (hospitals) are assignee types for patents and patent applications.

AU (Australia), BR (Brazil), CN (China), DE (Denmark), EP (European Union-European Patent Office), FR (France), GB (Great Britain), IN (India), JP (Japan), KR (Korean), RU (Russia), SU (Soviet Union (USSR)), US (United States).