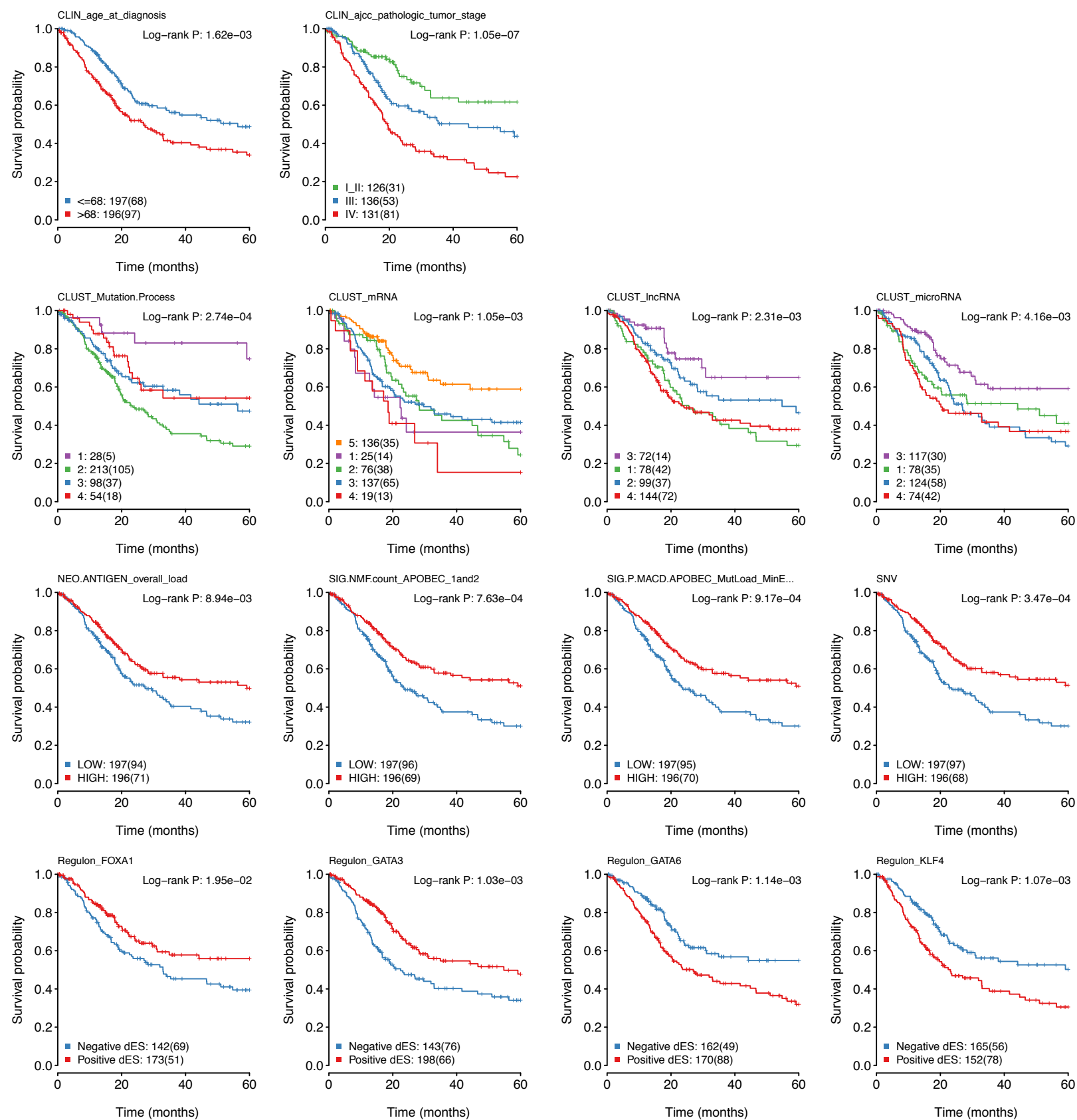
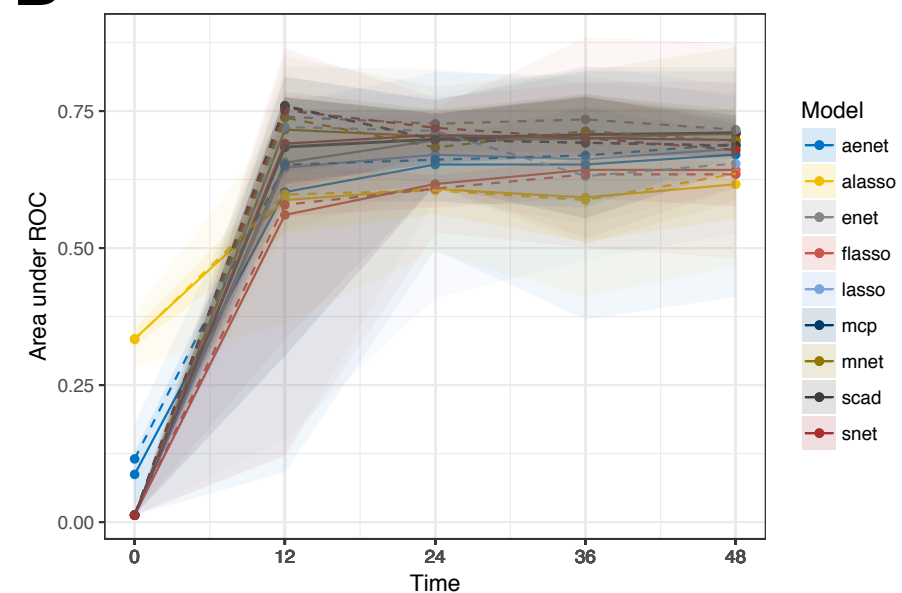


A



B



C

MSig

Variable	N	Hazard Ratio (95% CI)	p
CLIN_age_at_diagnosis	404	1.03 (1.02–1.05)	<0.001
CLIN_age_at_diagnosis	404	Reference	
CLIN_age_at_diagnosis	404	1.87 (1.20–2.90)	0.006
CLIN_age_at_diagnosis	404	2.90 (1.91–4.38)	<0.001
CLUST_Mutation.Process	1: 28	Reference	
CLUST_Mutation.Process	2: 220	3.86 (1.56–9.55)	0.004
CLUST_Mutation.Process	3: 100	2.58 (1.01–6.60)	0.048
CLUST_Mutation.Process	4: 56	2.05 (0.76–5.52)	0.155

mRNA

Variable	N	Hazard Ratio (95% CI)	p
CLIN_age_at_diagnosis	403	1.03 (1.02–1.05)	<0.001
CLIN_age_at_diagnosis	403	Reference	
CLIN_age_at_diagnosis	403	1.57 (1.01–2.46)	0.047
CLIN_age_at_diagnosis	403	2.61 (1.70–3.99)	<0.001
CLUST_mRNA	Luminal-papillary: 5	Reference	
CLUST_mRNA	Luminal: 1: 26	1.32 (0.70–2.51)	0.389
CLUST_mRNA	Luminal: 2: 78	1.39 (0.87–2.23)	0.168
CLUST_mRNA	Basal-squamous: 3: 141	1.65 (1.09–2.50)	0.018
CLUST_mRNA	Neuronal: 4: 20	2.83 (1.50–5.31)	0.001

lncRNA

Variable	N	Hazard Ratio (95% CI)	p
CLIN_age_at_diagnosis	400	1.03 (1.02–1.05)	<0.001
CLIN_age_at_diagnosis	400	Reference	
CLIN_age_at_diagnosis	400	1.55 (1.00–2.40)	0.051
CLIN_age_at_diagnosis	400	2.76 (1.81–4.20)	<0.001
CLUST_lncRNA	3: 73	Reference	
CLUST_lncRNA	1: 80	1.75 (0.95–3.24)	0.074
CLUST_lncRNA	2: 100	1.43 (0.77–2.64)	0.260
CLUST_lncRNA	4: 147	2.29 (1.29–4.06)	0.005

miRNA

Variable	N	Hazard Ratio (95% CI)	p
CLIN_age_at_diagnosis	400	1.03 (1.02–1.05)	<0.001
CLIN_age_at_diagnosis	400	Reference	
CLIN_age_at_diagnosis	400	1.70 (1.09–2.66)	0.019
CLIN_age_at_diagnosis	400	2.90 (1.90–4.43)	<0.001
CLUST_microRNA	3: 119	Reference	
CLUST_microRNA	1: 80	1.20 (0.73–1.99)	0.466
CLUST_microRNA	2: 126	1.32 (0.84–2.08)	0.231
CLUST_microRNA	4: 75	2.07 (1.30–3.30)	0.002