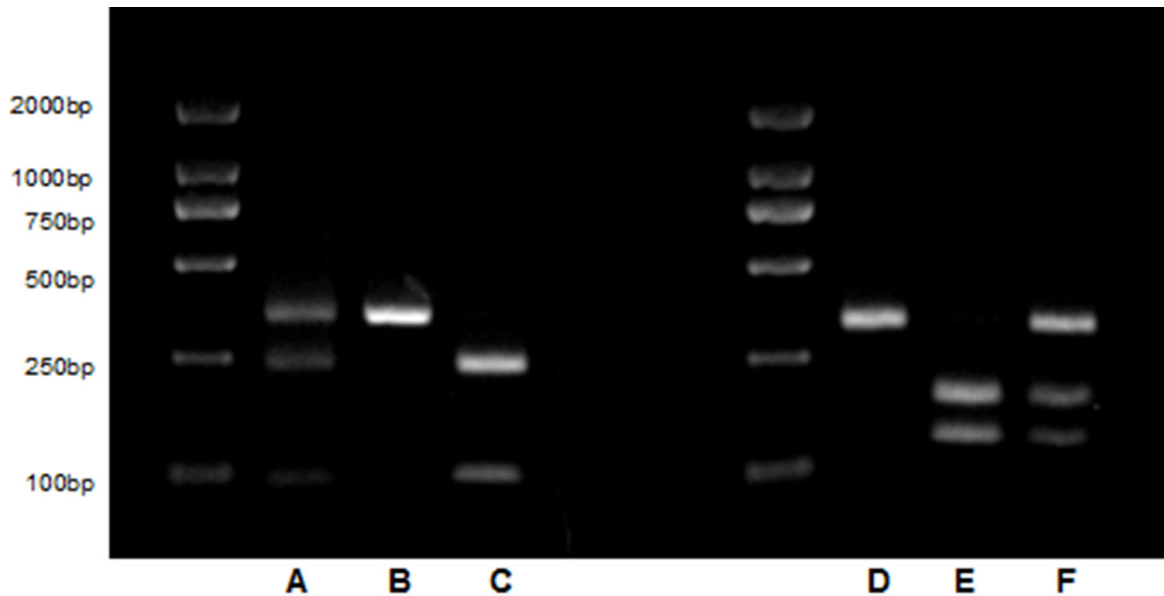


## Toll-like receptor 5 gene polymorphism is associated with breast cancer susceptibility

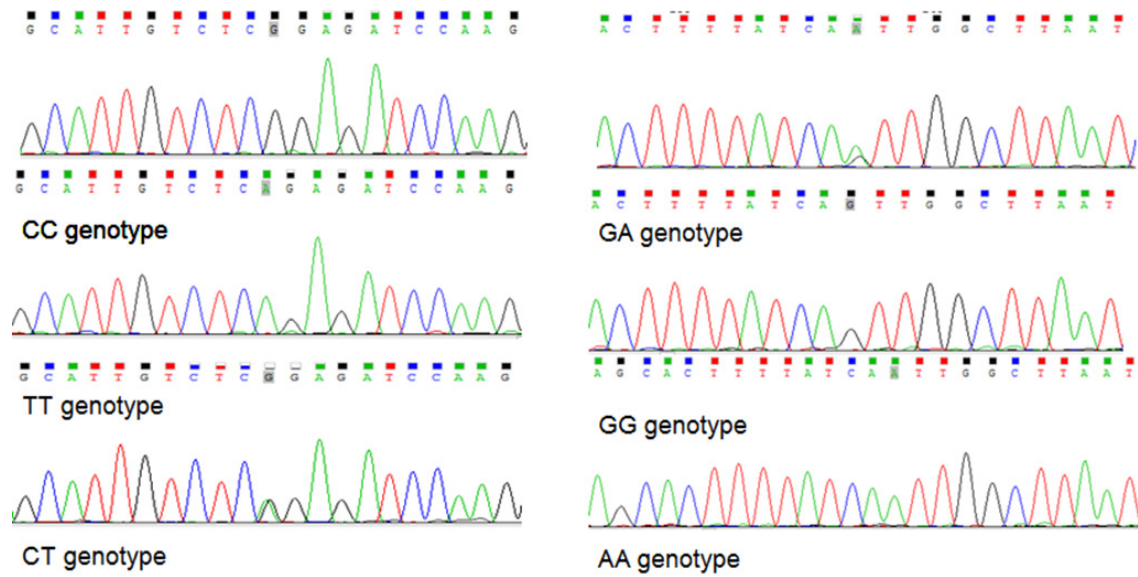
### SUPPLEMENTARY MATERIALS



**A-C. rs5744168 CT/CC/TT genotype**

**D-F. rs2072493 GG/GA/AA genotype**

Supplementary Figure 1: PCR-RFLP results for rs2072493 and rs5744168.



Sequence results of rs2072493 and rs5744168

Supplementary Figure 2: Sequencing results for rs2072493 and rs5744168.

**Supplementary Table 1: Supplement information for PCR-RFLP genotyping**

SNP	Primer	Annealing temperature	Restriction enzyme
rs2072493	5'-GACTAAGCCTCAACTCCAACA-3'	58.0	MfeI
	5'-GACTTCCTCTTCATCACAACC-3'		
rs5744168	5'-GGTAGCCTACATTGATTGC-3'	56.8	DdeI
	5'-GGATTCTCTGAAGGGGTTTGAT-3'		