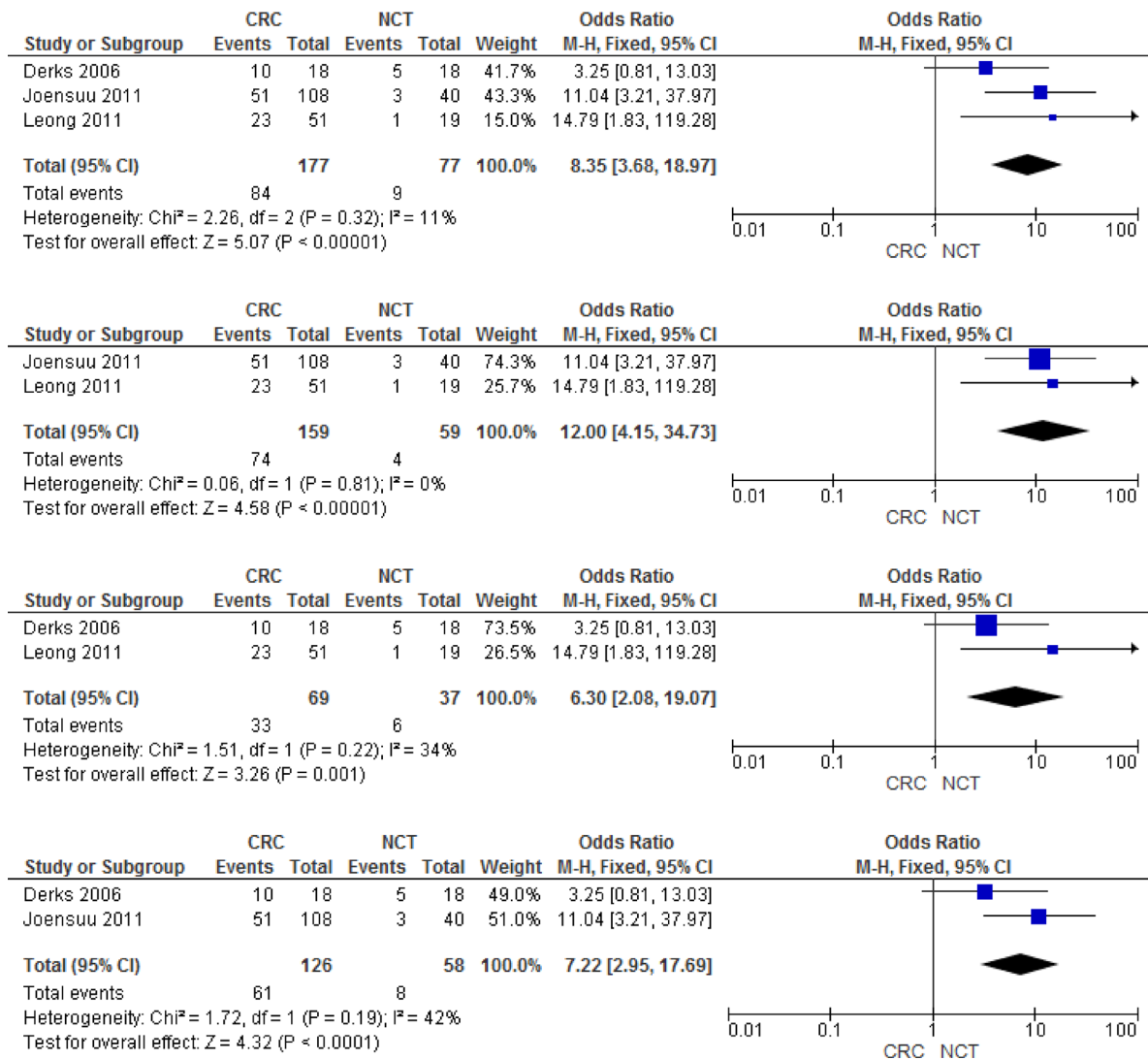
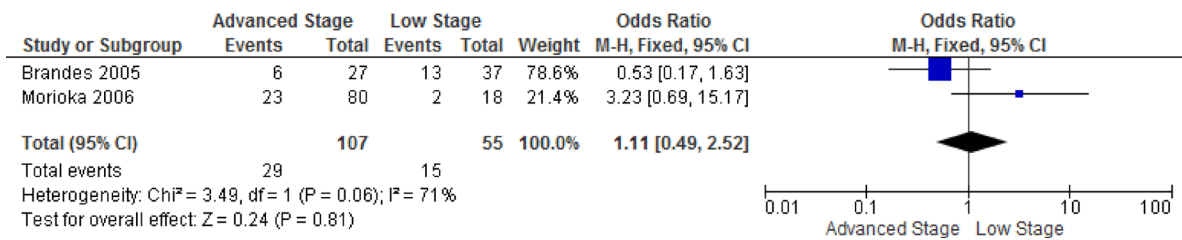
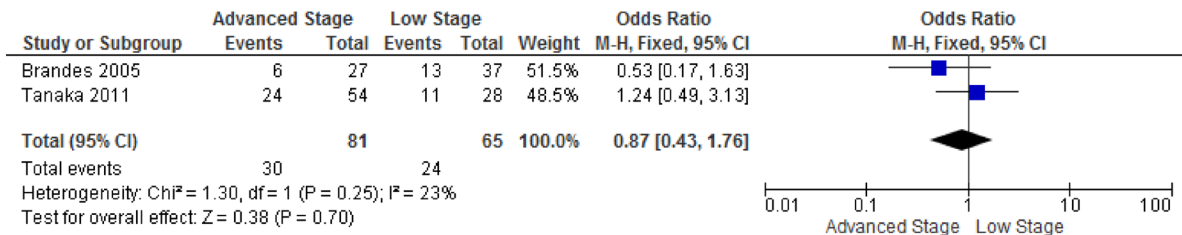
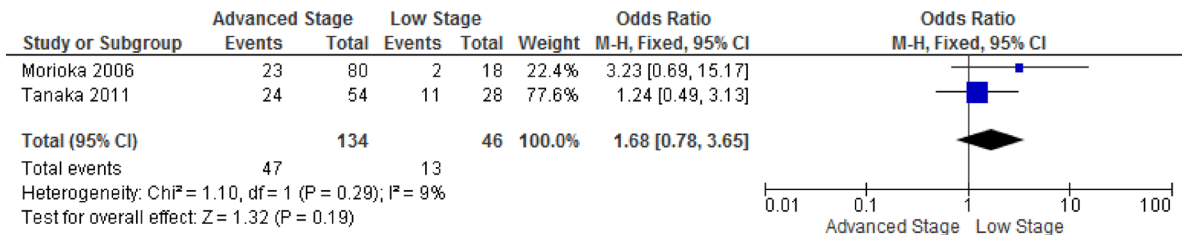
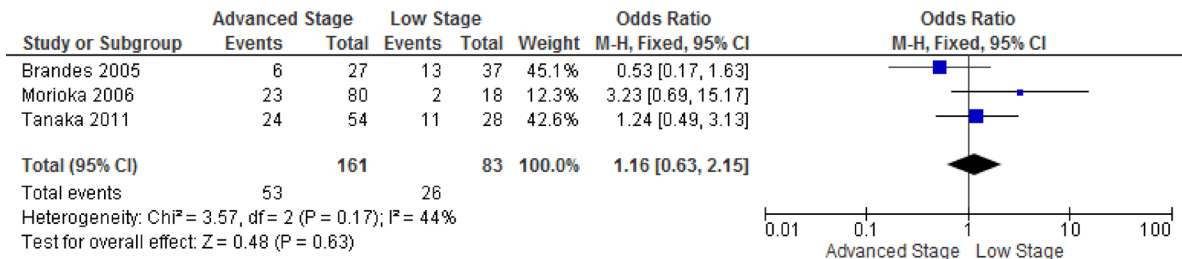


The diagnostic and prognostic value of *CHFR* hypermethylation in colorectal cancer, a meta-analysis and literature review

SUPPLEMENTARY MATERIALS



Supplementary Figure 1: The sensitivity analysis of *CHFR* promoter hypermethylation in CRC and normal colorectal tissue.



Supplementary Figure 2: The sensitivity of analysis of *CHFR* promoter hypermethylation in stage III/IV and stage I/II of CRC.