

The Immunomodulatory Drug Glatiramer Acetate is Also an Effective Antimicrobial Agent that Kills Gram-negative Bacteria

Stig Hill Christiansen¹, Ronan A. Murphy², Kristian Juul-Madsen¹, Marlene Fredborg³, Michael Lykke Hvam^{4,5}, Esben Axelgaard¹, Sandra M. Skovdal⁴, Rikke Louise Meyer^{4,6}, Uffe B. Skov Sørensen¹, Arne Möller⁷, Jens Randel Nyengaard^{8,9}, Niels Nørskov-Lauritsen^{3,10}, Mikala Wang^{3,10}, Mihaela Gadjeva¹¹, Kenneth A. Howard^{4,5}, Jane C. Davies^{2,12}, Eskild Petersen^{10,13,14}, Thomas Vorup-Jensen^{1,4,13}

¹Biophysical Immunology Laboratory, Dept. of Biomedicine, Aarhus University, Aarhus, Denmark; ²CF and Chronic Lung Infection, National Heart and Lung Institute, Imperial College London, London, United Kingdom; ³Dept. of Clinical Microbiology, Aarhus University Hospital Skejby, Denmark; ⁴Interdisciplinary Nanoscience Center (iNANO), Aarhus University, Denmark; ⁵Dept. of Molecular Biology & Genetics, Aarhus University, Aarhus, Denmark. ⁶Dept. of Bioscience, Aarhus University, Aarhus, Denmark; ⁷Dept. of Structural Biology, Max Planck Institute of Biophysics, Frankfurt, Germany; ⁸Core Center for Molecular Morphology, Section for Stereology and Microscopy, Dept. of Clinical Medicine, Aarhus University, Aarhus, Denmark; ⁹Center for Stochastic Geometry and Advanced Bioimaging, Aarhus University, Denmark; ¹⁰Dept. of Clinical Medicine, Aarhus University, Aarhus, Denmark; ¹¹Dept. of Medicine, Division of Infectious Diseases, Brigham and Women's Hospital, Harvard Medical School, Boston, MA; ¹²Dept. of Paediatric Respiratory Medicine, Royal Brompton & Harefield Foundation Trust, London, UK.; ¹³Aarhus University Network for Interdisciplinary Drug Resistance Research. ¹⁴Dept. of Infectious Diseases, The Royal Hospital, Muscat, Sultanate of Oman.

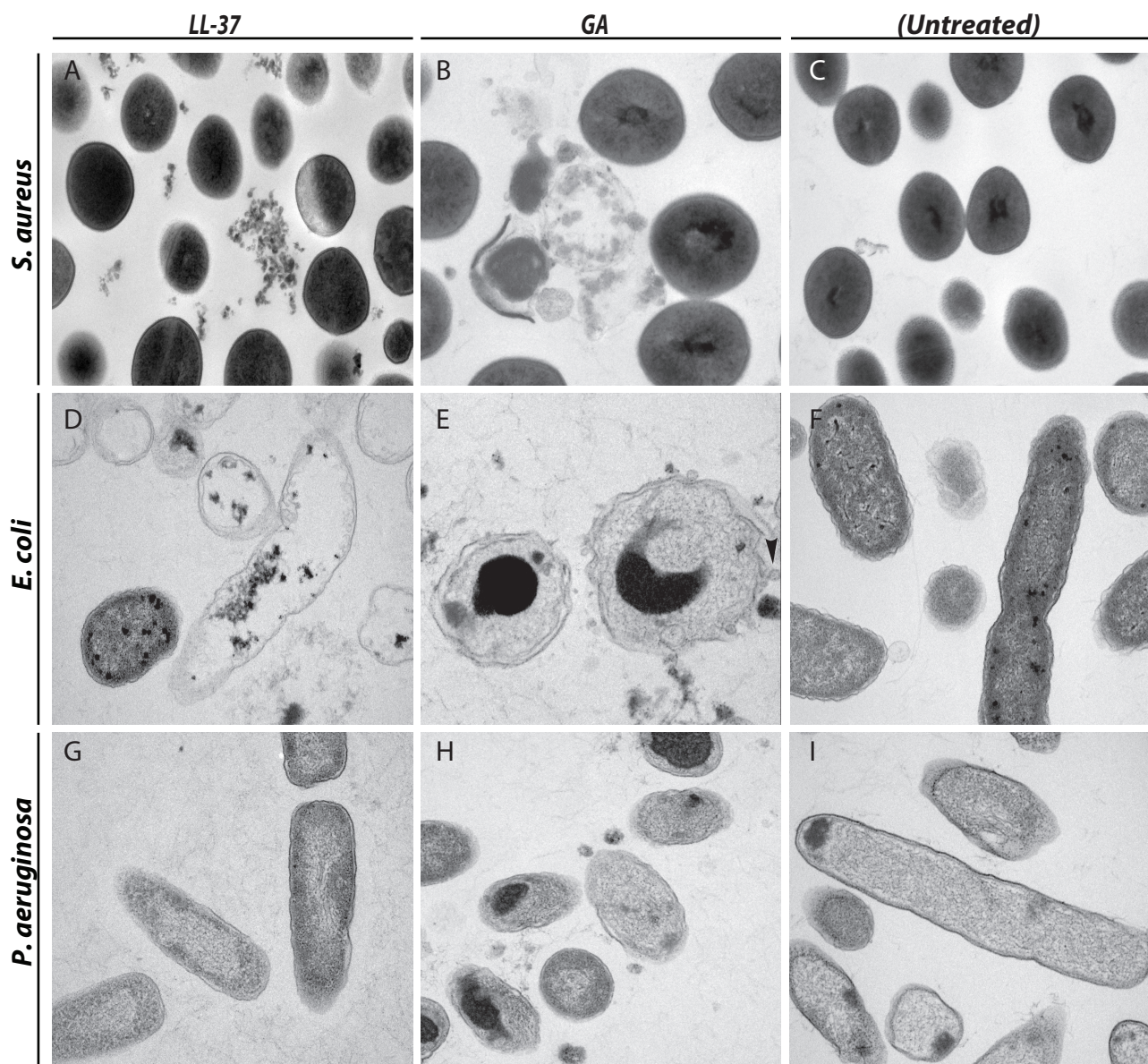
Corresponding author: Prof. Thomas Vorup-Jensen; Biophysical Immunology Laboratory, Dept. of Biomedicine, Aarhus University, DK-8000 Aarhus C, Denmark, phone (+45) 8716 7853; fax (+45) 8619 6128; e-mail: vorup-jensen@biomed.au.dk

Supplementary Table 1: Clinical *P. aeruginosa* isolates data¹

STRAIN ²	MUCOID	SAMPLE TYPE	SENSITIVITY TESTING ³					AGE years	GENDER
			Ceftazidime	Ciprofloxacin	Meropenem	Tobramycin	Colistin		
FS1	Yes	Spont. Sputum	Sensitive	Sensitive	Sensitive	Resistant	Sensitive	37	Male
FS2	No	Spont. Sputum	Sensitive	Sensitive	Sensitive	Sensitive	Sensitive	45	Male
FS3	No	Spont. Sputum	Resistant	Sensitive	Resistant	Resistant	Sensitive	25	Male
FS4	Yes	Spont. Sputum	Sensitive	Resistant	Sensitive	Resistant	Sensitive	40	Female
FS5	No	Spont. Sputum	Sensitive	Sensitive	Sensitive	Sensitive	Sensitive	41	Male
FS6	Yes	Spont. Sputum	Sensitive	Sensitive	Sensitive	Sensitive	Sensitive	14	Male
FS7	No	Spont. Sputum	Resistant	Resistant	Sensitive	Resistant	Resistant	46	Male
FS8	Yes	Spont. Sputum	Sensitive	Sensitive	Sensitive	Sensitive	Sensitive	30	Male
FS9	Yes	Spont. Sputum	Resistant	Resistant	Resistant	Resistant	Sensitive	29	Female
FS10	Yes	Spont. Sputum	Resistant	Sensitive	Sensitive	Resistant	Sensitive	36	Female
FS11	No	Spont. Sputum	Resistant	Sensitive	Resistant	Sensitive	Sensitive	26	Male
FS12	Yes	Spont. Sputum	Sensitive	Resistant	Sensitive	Sensitive	Sensitive	38	Male
FS13	Yes	Spont. Sputum	Sensitive	Sensitive	Sensitive	Sensitive	Sensitive	47	Male
FS14	No	Spont. Sputum	Sensitive	Sensitive	Sensitive	Sensitive	Sensitive	38	Male
FS15	No	Spont. Sputum	Sensitive	Sensitive	Sensitive	Sensitive	Sensitive	42	Male
SS1	Yes	Cough Swab	Sensitive	Sensitive	Sensitive	Sensitive	Sensitive	19	Female
SS2	Yes	Spont. Sputum	Sensitive	Sensitive	Sensitive	Sensitive	Sensitive	24	Female
SS3	No	Spont. Sputum	Sensitive	Resistant	Sensitive	Resistant	Sensitive	5	Male
SS4	Yes	Spont. Sputum	Resistant	Sensitive	Resistant	Sensitive	Sensitive	19	Female
SS5	Yes	Spont. Sputum	Sensitive	Sensitive	Sensitive	Sensitive	Sensitive	44	Male
SS6	Yes	Spont. Sputum	N/T	N/T	N/T	N/T	N/T	32	Male
SS7	No	Spont. Sputum	Sensitive	Sensitive	Sensitive	Sensitive	Sensitive	21	Female
R1	No	Spont. Sputum	Sensitive	Sensitive	Sensitive	Sensitive	Sensitive	42	Female
R2	Yes	Spont. Sputum	Sensitive	Sensitive	Sensitive	Sensitive	Sensitive	28	Female
R3	No	Cough Swab	Resistant	Resistant	Resistant	Resistant	Sensitive	13	Female
R4	No	Spont. Sputum	Resistant	Resistant	Resistant	Resistant	Sensitive	22	Female
R5	No	Spont. Sputum	Sensitive	Sensitive	Resistant	Sensitive	Sensitive	48	Male
R6	Yes	Spont. Sputum	Sensitive	Sensitive	Resistant	Sensitive	Sensitive	43	Male
R7	Yes	Spont. Sputum	Sensitive	Sensitive	Sensitive	Sensitive	Sensitive	48	Male
R8	Yes	Spont. Sputum	Sensitive	Sensitive	Sensitive	Sensitive	Sensitive	56	Male
R9	Yes	Spont. Sputum	Resistant	Resistant	Resistant	Resistant	Sensitive	30	Male
R10	No	Spont. Sputum	Resistant	Resistant	Resistant	Resistant	Sensitive	29	Female
R11	No	Spont. Sputum	Resistant	Resistant	Intermediate	Resistant	Sensitive	43	Male
R12	No	Spont. Sputum	Sensitive	Sensitive	Sensitive	Sensitive	Sensitive	31	Male
R13	Yes	Spont. Sputum	Resistant	Resistant	Resistant	Resistant	Sensitive	33	Female
R14	No	Spont. Sputum	Sensitive	Sensitive	Sensitive	Sensitive	Sensitive	16	Female
R15	Yes	Spont. Sputum	Sensitive	Sensitive	Sensitive	Sensitive	Sensitive	25	Female
R16	Yes	Spont. Sputum	Sensitive	Sensitive	Sensitive	Sensitive	Sensitive	24	Male
R17	No	Spont. Sputum	Resistant	Resistant	Resistant	Sensitive	Sensitive	26	Male
R18	No	Spont. Sputum	Sensitive	Sensitive	Intermediate	Sensitive	Sensitive	73	Male
R19	Yes	Spont. Sputum	Sensitive	Sensitive	Sensitive	Sensitive	Sensitive	15	Male
R20	Yes	Spont. Sputum	Sensitive	Sensitive	Sensitive	Sensitive	Sensitive	31	Female
R21	No	Spont. Sputum	Sensitive	Resistant	Sensitive	Resistant	Sensitive	16	Female
R22	No	Spont. Sputum	Sensitive	Sensitive	Resistant	Sensitive	Sensitive	21	Female

¹Data on clinical isolates of *P. aeruginosa* on mucoidy, sample collection, resistance to classic antibiotics, and age and gender of the patient. ²Samples were divided into groups of fast susceptible (FS), slow susceptible (SS), and resistant (R) strains. ³N/T; Not tested.

Fig. S1, Christiansen *et al.*



500 nm

Supplementary Figure 1

TEM images of *S. aureus* (A-C), *E. coli* (D-F), and *P. aeruginosa* (G-I) exposed to LL-37 (A,D,G), GA (B,E,H), or left as untreated (C,F,I). Higher magnification micrographs of the samples shown in Fig. 8. Scale bar, 500 nm.