

## **Supplementary Information**

### **DNA metabarcoding for high-throughput monitoring of estuarine macrobenthic communities**

Jorge Lobo<sup>1,2,\*</sup>, Shadi Shokralla<sup>3</sup>, Maria Helena Costa<sup>2</sup>, Mehrdad Hajibabaei<sup>3</sup>, Filipe Oliveira Costa<sup>1</sup>

<sup>1</sup>CBMA – Centre of Molecular and Environmental Biology, University of Minho, Campus de Gualtar, 4710-057 Braga, Portugal

<sup>2</sup>MARE – Marine and Environmental Sciences Centre. New University of Lisbon. Campus de Caparica, 2829-516 Caparica, Portugal

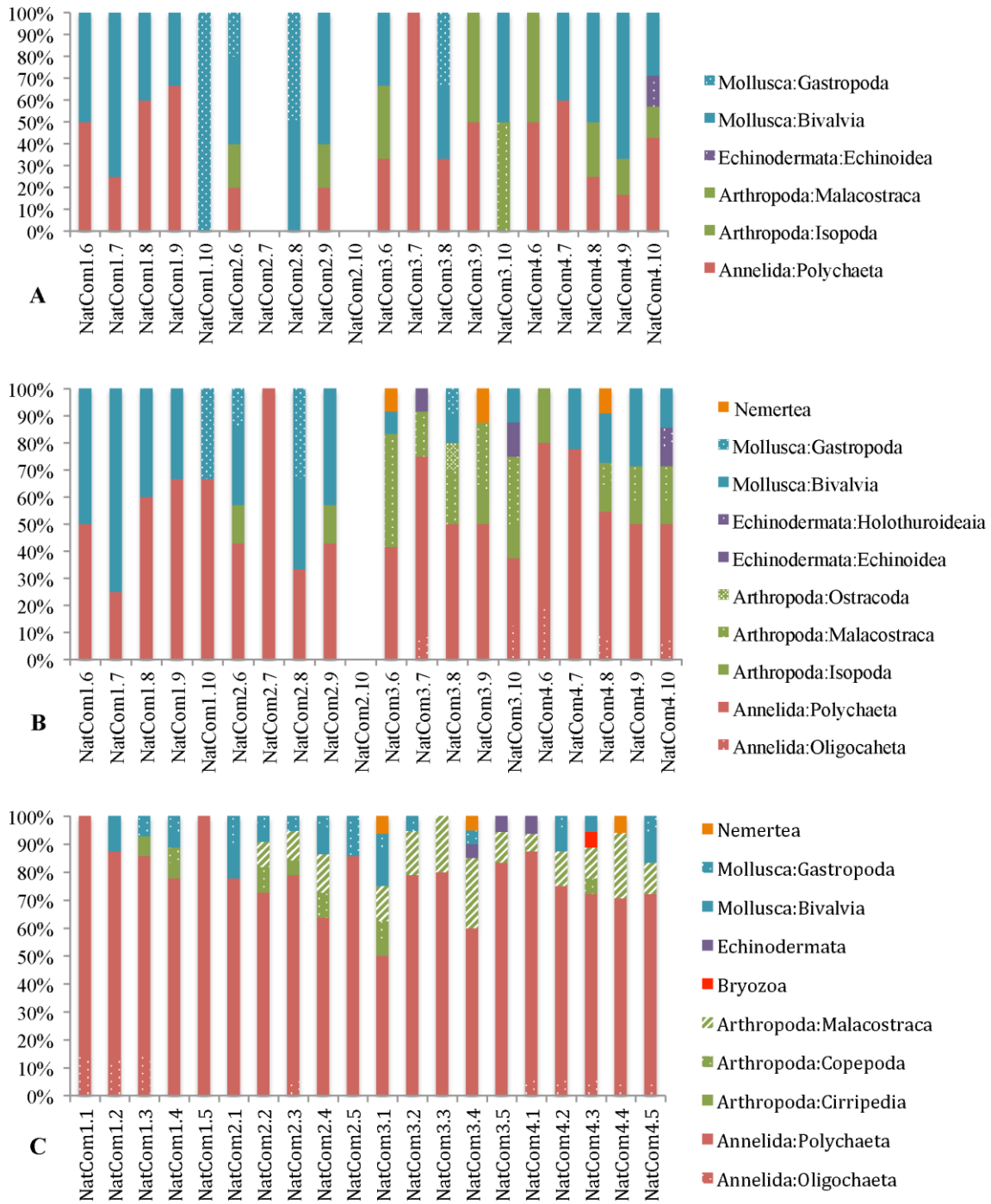
<sup>3</sup>Centre for Biodiversity Genomics, Biodiversity Institute of Ontario and Department of Integrative Biology. University of Guelph. Guelph, ON N1G 2W1, Canada

\* Corresponding author. [j.loboarteaga@gmail.com](mailto:j.loboarteaga@gmail.com)

SI Figure

SI Tables

SI Figure



**Figure S1: Species composition of all samples of NMC.** A shows species composition considering only specimens morphologically identified to the species level. B considering specimens morphologically identified to a higher taxonomic level. C shows species composition recovered through HTS. No specimens were identified to the species level in NMC2.7. No specimens were collected in NMC2.10.

**Table S1: Number of reads assigned to species in each NMC and primer pair.**

	<b>Primer pair B</b>		<b>Primer pair D</b>	
	<b>Our reference library of DNA barcodes</b>	<b>GenBank</b>	<b>Our reference library of DNA barcodes</b>	<b>GenBank</b>
<b>NMC1.1</b>	160483	159067	12599	63949
<b>NMC1.2</b>	20607	623	7980	1207
<b>NMC1.3</b>	7592	37	7621	200
<b>NMC1.4</b>	374041	370148	20986	38273
<b>NMC1.5</b>	68404	56324	3474	44838
<b>NMC2.1</b>	2478	2386	3737	4856
<b>NMC2.2</b>	9916	9606	1721	2459
<b>NMC2.3</b>	150	704	544	17586
<b>NMC2.4</b>	153016	165386	110936	152695
<b>NMC2.5</b>	56	56	32	28
<b>NMC3.1</b>	126991	191736	53429	13195
<b>NMC3.2</b>	153152	148388	20397	16061
<b>NMC3.3</b>	160258	216194	158693	214413
<b>NMC3.4</b>	178432	207279	50386	50080
<b>NMC3.5</b>	100297	99112	48646	48256
<b>NMC4.1</b>	96110	151869	86172	31648
<b>NMC4.2</b>	159175	51999	134581	38645
<b>NMC4.3</b>	152206	112758	90353	69141
<b>NMC4.4</b>	223908	215030	46798	33450
<b>NMC4.5</b>	7601	24570	616	702

**Table S2: Taxonomic classification of the species identified in each NMC through HTS (with the primer pairs B and D) and morphological identifications.** Numbers indicate the number of reads (HTS) and number of specimens for each species.

Kingdom	Phylum	Class	Order	Family	Species	NMC1				
						HTS B	HTS D	Morph.		
Animalia	Annelida	Polychaeta		Capitellidae	<i>Notomastus profundus</i> (Eisig, 1887)	-	0/553/0/0/0	-		
				Maldanidae	<i>Axiothella constricta</i> (Claparède, 1869)	-	-	-		
					<i>Euclymene santandarensis</i> (Rioja, 1917)	3/0/0/0/0	-	-		
					<i>Euclymene sp.</i>	-	4/0/0/3/0	-		
					<i>Heteroclymene robusta</i> Arwidsson, 1906	18/0/3/41/0	0/1058/0/0/0	-		
					<i>Leiochone leiopygos</i> (Grube, 1860)	9/597/0/3/0	0/0/4/0/6	-		
					<i>Leiochone sp.</i>	-	0/0/3/5/0	-		
					<i>Praxillella praetermissa</i> (Malmgren, 1865)	0/0/22/23/0	27/0/54/7/0	-		
					Orbiniidae	Orbiniidae ni	-	-	-	
					Eunicida	Eunicidae	<i>Marphysa sanguinea</i> (Montagu, 1815)	-	4/0/0/0/8	0/1/0/2/0
						<i>Marphysa sp.</i>	-	-	-	
					Onuphidae	<i>Diopatra aciculata</i> Knox & Cameron, 1971	-	0/0/0/3/0	-	
						<i>Diopatra marocensis</i> Paxton, Fadlaoui & Lechapt, 1995	-	-	-	
						<i>Diopatra neapolitana</i> Delle Chiaje, 1841	10/0/3/373857/30	0/0/0/38069/7	-	
					Phyllodocida	Glyceridae	<i>Glycera alba</i> (O.F. Müller, 1776)	6/0/0/6/7	21/0/6/18/19	0/0/0/1/0
							<i>Glycera sp.</i>	-	14/0/6/0/0	-
							<i>Glycera tridactyla</i> Schmarda, 1861	-	-	-
						Nephtyidae	<i>Nephtys cirrosa</i> Ehlers, 1868	-	12433/0/0/5/1342	0/0/1/0/0
							<i>Nephtys hombergii</i> Savigny in Lamarck, 1818	160437/0/9/30/53510	63886/0/125/95/44291	1/0/0/0/0
						Nereididae	<i>Hediste diversicolor</i> (O.F. Müller, 1776)	0/24/0/0/0	0/104/0/0/0	0/0/1/0/0
						Phyllodocidae	<i>Phyllodoce groenlandica</i> Örsted, 1842	0/0/0/0/3832	0/0/0/0/507	-
						Polynoidae	<i>Paralepidonotus ampulliferus</i> (Grube, 1878)	-	0/10/0/0/0	-
					Sabellida	Oweniidae	<i>Owenia fusiformis</i> Delle Chiaje, 1844	-	0/0/0/3/0	-
		Terebellida	Cirratulidae	Cirratulidae ni	6/0/0/6/14864	3/0/0/3/1874	-			
			Pectinariidae	<i>Lagis koreni</i> Malmgren, 1866	-	-	0/2/0/0/0			
			Terebellidae	<i>Pista cristata</i> (Müller, 1776)	0/0/3/7/0	0/0/11/15/0	-			
			Trichobranchinae	<i>Trichobranchus glacialis</i> Malmgren, 1866	0/19986/7552/0/0	0/6236/7543/10/0	-			
		Clitellata	Haplotaxida	Tubificidae	<i>Chaetogaster diaphanus</i> (Gruithuisen, 1828)	0/4/0/0/0	4/0/0/0/0	-		
					<i>Nais communis</i> Piguët, 1906	-	0/0/6/0/0	-		

				<i>Stylaria lacustris</i> (Linnaeus, 1767)	-	3/0/5/0/0	-
		Lumbriculida	Lumbriculidae	<i>Lumbriculus variegatus</i> (Müller, 1774)	-	-	-
Arthropoda	Cirripedia	Sessilia	Balanidae	<i>Amphibalanus amphitrite</i> (Darwin, 1854)	0/0/4/0/0	0/0/0/16/0	-
	Copepoda	Calanoida	Acartiidae	<i>Paracartia grani</i> Sars G.O., 1904	0/0/0/3/0	-	-
			Centropagidae	<i>Centropages hamatus</i> (Lilljeborg, 1853)	-	-	-
			Temoridae	<i>Temora longicornis</i> (Müller O.F., 1785)	-	-	-
		Cyclopoida		Cyclopoida ni	-	-	-
		Poecilostomatoida	Mytilicolidae	<i>Mytilicola orientalis</i> Mori, 1935	-	-	-
	Malacostraca	Amphipoda	Ampeliscidae	<i>Ampelisca brevicornis</i> (Costa, 1853)	-	-	-
				<i>Ampelisca sp.</i>	-	-	-
			Corophiidae	<i>Corophium sp.</i>	-	-	-
		Isopoda	Anthuridae	<i>Cyathura carinata</i> (Krøyer, 1847)	-	-	-
			Sphaeromatidae	Sphaeromatidae ni	-	-	-
		Decapoda	Callianassidae	<i>Pestarella tyrrhena</i> (Petagna, 1792)	-	-	-
			Diogenidae	<i>Diogenes pugilator</i> (Roux, 1829)	-	-	-
			Inachidae	<i>Macropodia rostrata</i> (Linnaeus, 1761)	-	-	-
				<i>Macropodia sp.</i>	-	-	-
			Paguridae	<i>Pylopaguropsis magnimanus</i>	-	-	-
			Pilumnidae	<i>Pilumnus hirtellus</i> (Linnaeus, 1761)	-	-	-
				<i>Pilumnus spinifer</i> H. Milne Edwards, 1834	-	-	-
			Pinnotheridae	<i>Pinnotheres pisum</i> (Linnaeus, 1767)	-	-	-
			Upogebiidae	<i>Upogebia deltaura</i> (Leach, 1815)	-	-	-
Bryozoa	Gymnolaemata	Cheilostomatida	Bugulidae	<i>Bugula neritina</i> (Linnaeus, 1758)	-	-	-
Echinodermata	Echinoidea	Spatangoida	Loveniidae	<i>Echinocardium cordatum</i> (Pennant, 1777)	-	-	-
Mollusca	Bivalvia	Anomalodesmata	Thraciidae	<i>Thracia phaseolina</i> (Lamarck, 1818)	-	-	-
		Myoida	Corbulidae	<i>Corbula gibba</i> (Olivi, 1792)	-	-	1/0/1/0/0
		Veneroida	Cardiidae	<i>Cerastoderma edule</i> (Linnaeus, 1758)	-	-	0/2/1/0/0
				<i>Parvicardium exiguum</i> (Gmelin, 1791)	-	-	-
				<i>Parvicardium pinnulatum</i> (Conrad, 1831)	-	-	-
			Donacidae	<i>Donax trunculus</i> Linnaeus, 1758	-	-	-
			Mactridae	<i>Spisula solida</i> (Linnaeus, 1758)	-	-	0/1/0/0/0
			Semelidae	<i>Abra alba</i> (W. Wood, 1802)	-	-	-
			Ungulinidae	<i>Diplodonta rotundata</i> (Montagu, 1803)	-	-	-
			Veneridae	<i>Chamelea striatula</i> (da Costa, 1778)	-	-	-

			[unassigned]					
			Euheterodonta	Solenidae	<i>Solen marginatus</i> Pulteney, 1799	-	0/35/0/6/0	0/1/0/1/0
		Gastropoda	Littorinimorpha	Hydrobiidae	<i>Ecrobia ventrosa</i> (Montagu, 1803)	-	-	0/0/0/0/1
			Neogastropoda	Nassariidae	<i>Nassarius reticulatus</i> (Linnaeus, 1758)	0/0/0/76/0	0/0/0/51/0	-
	Nemertea	Anopla		Lineidae	<i>Cerebratulus longiceps</i> Coe, 1901	-	-	-
					<i>Cerebratulus sp.</i>	-	-	-
Plantae	Rhodophyta	Bangiophyceae	Bangiales	Bangiaceae	<i>Pyropia haitanensis</i> (T.J.Chang & B.F.Zheng) N.Kikuchi & M.Miyata, 2011	-	-	-
		Florideophyceae	Ceramiales	Ceramiaceae	<i>Ceramium secundatum</i> Lyngbye, 1819	-	-	-
Chromista	Ochrophyta	Phaeophyceae	Fucales	Durvillaeaceae	<i>Durvillaea sp.</i>	-	-	-
			Ectocarpales	Chordariaceae	<i>Leathesia marina</i> (Lyngbye) Decaisne, 1842	-	-	-
			Scytosiphonales	Scytosiphonaceae	<i>Petalonia fascia</i> (O.F.Müller) Kuntze, 1898	-	-	-
					<i>Scytosiphon lomentaria</i> (Lyngbye) Link, 1833	-	-	-

							NMC2			
Kingdom	Phylum	Class	Order	Family	Species	HTS B	HTS D	Morph.		
Animalia	Annelida	Polychaeta		Capitellidae	<i>Notomastus profundus</i> (Eisig, 1887)	-	142/65/480/108	-		
				Maldanidae	<i>Axiothella constricta</i> (Claparède, 1869)	0/4/0/0/0	-	-		
					<i>Euclymene santandarensis</i> (Rioja, 1917)	0/33/10/0/0	0/0/0/3/0	-		
					<i>Euclymene sp.</i>	0/17/3/0/0	-	-		
					<i>Heteroclymene robusta</i> Arwidsson, 1906	0/0/51/0/0	0/0/4/4/0	-		
					<i>Leiochone leiopygos</i> (Grube, 1860)	0/37/32/3/3	0/0/4/0/0	-		
					<i>Leiochone sp.</i>	0/5/0/0/0	-	-		
					<i>Praxillella praetermissa</i> (Malmgren, 1865)	15/120/31/0/8	0/0/0/9/0	-		
					Orbiniidae	Orbiniidae ni	-	-	-	
					Eunicida	Eunicidae	<i>Marphysa sanguinea</i> (Montagu, 1815)	0/52/11/3/0	-	-
						<i>Marphysa sp.</i>	-	-	-	
					Onuphidae	<i>Diopatra aciculata</i> Knox & Cameron, 1971	-	-	-	
						<i>Diopatra marocensis</i> Paxton, Fadlaoui & Lechapt, 1995	0/20/0/0/0	0/0/3/0/0	-	
						<i>Diopatra neapolitana</i> Delle Chiaje, 1841	371/34/3/99/0	14/0/5/48/0	-	
					Phyllodocida	Glyceridae	<i>Glycera alba</i> (O.F. Müller, 1776)	7/121/12/42234/10	4/7/0/32465/14	-
							<i>Glycera sp.</i>	6/123/13/43978/12	0/5/0/0/16	-
							<i>Glycera tridactyla</i> Schmarda, 1861	-	0/0/0/30/0	-
						Nephtyidae	<i>Nephtys cirrosa</i> Ehlers, 1868	-	0/0/0/48/0	-
							<i>Nephtys hombergii</i> Savigny in Lamarck, 1818	2042/9313/5/1066/35	547/361/0/1196/6	-

			Nereididae	<i>Hediste diversicolor</i> (O.F. Müller, 1776)	-	-	-
			Phyllodoceidae	<i>Phyllodoce groenlandica</i> Örsted, 1842	-	-	-
			Polynoidae	<i>Paralepidonotus ampulliferus</i> (Grube, 1878)	-	-	-
		Sabellida	Oweniidae	<i>Owenia fusiformis</i> Delle Chiaje, 1844	0/3/0/11682/0	0/0/0/7085/0	-
		Terebellida	Cirratulidae	Cirratulidae ni	0/27/0/0/0	-	-
			Pectinariidae	<i>Lagis koreni</i> Malmgren, 1866	-	-	-
			Terebellidae	<i>Pista cristata</i> (Müller, 1776)	0/13/4/7/0	0/0/0/5/4	0/0/0/1/0
			Trichobranchinae	<i>Trichobranchus glacialis</i> Malmgren, 1866	5/0/0/0/0	0/0/4/0/0	1/0/0/0/0
	Clitellata	Haplotaxida	Tubificidae	<i>Chaetogaster diaphanus</i> (Gruithuisen, 1828)	-	-	-
				<i>Nais communis</i> Piguët, 1906	-	0/0/4/0/0	-
				<i>Stylaria lacustris</i> (Linnaeus, 1767)	-	-	-
		Lumbriculida	Lumbriculidae	<i>Lumbriculus variegatus</i> (Müller, 1774)	-	-	-
Arthropoda	Cirripedia	Sessilia	Balanidae	<i>Amphibalanus amphitrite</i> (Darwin, 1854)	0/0/567/0/0	0/0/17516/0/0	-
	Copepoda	Calanoida	Acartiidae	<i>Paracartia grani</i> Sars G.O., 1904	0/14/0/023/0	0/6/0/35/0	-
			Centropagidae	<i>Centropages hamatus</i> (Lilljeborg, 1853)	0/66/0/4/0	-	-
			Temoridae	<i>Temora longicornis</i> (Müller O.F., 1785)	-	-	-
		Cyclopoida		Cyclopoida ni	-	-	-
		Poecilostomatoida	Mytilicolidae	<i>Mytilicola orientalis</i> Mori, 1935	-	-	-
	Malacostraca	Amphipoda	Ampeliscidae	<i>Ampelisca brevicornis</i> (Costa, 1853)	-	-	-
				<i>Ampelisca sp.</i>	-	-	-
			Corophiidae	<i>Corophium sp.</i>	-	-	-
		Isopoda	Anthuridae	<i>Cyathura carinata</i> (Krøyer, 1847)	0/4/0/0/0	-	1/0/0/2/0
			Sphaeromatidae	Sphaeromatidae ni	-	-	-
		Decapoda	Callinassidae	<i>Pestarella tyrrhena</i> (Petagna, 1792)	-	-	-
			Diogenidae	<i>Diogenes pugilator</i> (Roux, 1829)	-	-	-
			Inachidae	<i>Macropodia rostrata</i> (Linnaeus, 1761)	-	-	-
				<i>Macropodia sp.</i>	-	-	-
			Paguridae	<i>Pylopaguropsis magnimanus</i>	0/4/0/0/0	0/0/45/0/0	-
			Pilumnidae	<i>Pilumnus hirtellus</i> (Linnaeus, 1761)	0/0/0/4/0	0/0/8/4/0	-
				<i>Pilumnus spinifer</i> H. Milne Edwards, 1834	-	0/0/0/3/0	-
			Pinnotheridae	<i>Pinnotheres pisum</i> (Linnaeus, 1767)	-	-	-
			Upogebiidae	<i>Upogebia deltaura</i> (Leach, 1815)	0/0/0/4/0	-	-
Bryozoa	Gymnolaemata	Cheilostatida	Bugulidae	<i>Bugula neritina</i> (Linnaeus, 1758)	-	-	-
Echinodermata	Echinoidea	Spatangoida	Loveniidae	<i>Echinocardium cordatum</i> (Pennant, 1777)	-	-	-

Mollusca	Bivalvia	Anomalodesmata	Thraciidae	<i>Thracia phaseolina</i> (Lamarck, 1818)	-	-	-			
			Myoida	Corbulidae	<i>Corbula gibba</i> (Olivi, 1792)	-	-	1/0/0/0/0		
			Veneroida	Cardiidae	<i>Cerastoderma edule</i> (Linnaeus, 1758)	0/0/0/143/0	0/0/0/109/0	-		
					<i>Parvicardium exiguum</i> (Gmelin, 1791)	-	-	0/0/1/0/0		
					<i>Parvicardium pinnulatum</i> (Conrad, 1831)	-	-	0/0/0/1/0		
					Donacidae	<i>Donax trunculus</i> Linnaeus, 1758	-	-	-	
					Mactridae	<i>Spisula solida</i> (Linnaeus, 1758)	-	-	-	
					Semelidae	<i>Abra alba</i> (W. Wood, 1802)	-	-	-	
					Ungulinidae	<i>Diplodonta rotundata</i> (Montagu, 1803)	-	-	0/0/0/1/0	
			Veneridae	<i>Chamelea striatula</i> (da Costa, 1778)	-	-	-			
			[unassigned]	Solenidae	<i>Solen marginatus</i> Pulteney, 1799	32/161/0/34/0	4288/2081/0/49/0	1/0/0/1/0		
			Euheterodonta	Gastropoda	Littorinimorpha	Hydrobiidae	<i>Ecrobia ventrosa</i> (Montagu, 1803)	-	-	-
					Neogastropoda	Nassariidae	<i>Nassarius reticulatus</i> (Linnaeus, 1758)	7/82/6/110142/0	3/4/0/111689/9	1/0/1/0/0
Nemertea	Anopla	Lineidae	<i>Cerebratulus longiceps</i> Coe, 1901	-	-	-				
			<i>Cerebratulus sp.</i>	-	-	-				
Plantae	Rhodophyta	Bangiophyceae	Bangiales	Bangiaceae	<i>Pyropia haitanensis</i> (T.J.Chang & B.F.Zheng) N.Kikuchi & M.Miyata, 2011	0/0/59/0/0	-	-		
		Florideophyceae	Ceramiales	Ceramiaceae	<i>Ceramium secundatum</i> Lyngbye, 1819	-	-	-		
Chromista	Ochrophyta	Phaeophyceae	Fucales	Durvillaeaceae	<i>Durvillaea sp.</i>	-	0/0/8/0/0	-		
			Ectocarpales	Chordariaceae	<i>Leathesia marina</i> (Lyngbye) Decaisne, 1842	-	-	-		
			Scytosiphonales	Scytosiphonaceae	<i>Petalonia fascia</i> (O.F.Müller) Kuntze, 1898	-	-	-		
					<i>Scytosiphon lomentaria</i> (Lyngbye) Link, 1833	-	-	-		

						NMC3		
Kingdom	Phylum	Class	Order	Family	Species	HTS B	HTS D	Morph.
Animalia	Annelida	Polychaeta		Capitellidae	<i>Notomastus profundus</i> (Eisig, 1887)	-	0/18/40/0/330	0/3/1/2/0
				Maldanidae	<i>Axiothella constricta</i> (Claparède, 1869)	0/0/6605/3/0	0/4/7167/0/0	0/1/0/0/0
					<i>Euclymene santandarensis</i> (Rioja, 1917)	0/28132/18991/21806/24830	0/1818/6506/290/9276	0/1/0/0/0
					<i>Euclymene sp.</i>	32146/6/0/8/40	3690/4/5/0/0	-
					<i>Heteroclymene robusta</i> Arwidsson, 1906	0/0/80/100/110	0/1816/6506/290/9276	0/1/0/0/0
					<i>Leiochone leiopygos</i> (Grube, 1860)	0/46973/22387/2356/8859	0/11373/8075/89/2713	-
					<i>Leiochone sp.</i>	4368/4390/1422/4137/27	7139/4232/3710/667/3	-
					<i>Praxillella praetermissa</i> (Malmgren, 1865)	100674/73141/6996/97097/54348	6795/2639/755/2349/15131	1/1/0/0/0
					Orbiniidae	Orbiniidae ni	-	-



Arthropoda	Clitellata	Eunicida	Eunicidae	<i>Marphysa sanguinea</i> (Montagu, 1815)	8/10/64700/0/0	0/40/60236/0/0	-	
				<i>Marphysa sp.</i>	0/0/4/0/0	0/0/155/0/0	-	
			Onuphidae	<i>Diopatra aciculata</i> Knox & Cameron, 1971	-	-	-	
				<i>Diopatra marocensis</i> Paxton, Fadlaoui & Lechapt, 1995	56908/0/7/9/0	1517/4/0/0/0	-	
				<i>Diopatra neapolitana</i> Delle Chiaje, 1841	0/97/0/0/9	0/15/0/0/0	-	
			Phyllodocida	Glyceridae	<i>Glycera alba</i> (O.F. Müller, 1776)	1133/25/96483/27310/10968	1026/152/131646/20396/21114	-
					<i>Glycera sp.</i>	1194/32/103155/28837/11832	1026/152/131585/20389/21105	-
					<i>Glycera tridactyla</i> Schmarda, 1861	-	0/0/88/9/19	-
				Nephtyidae	<i>Nephtys cirrosa</i> Ehlers, 1868	0/0/0/0/16	-	-
					<i>Nephtys hombergii</i> Savigny in Lamarck, 1818	0/0/13/0/30	0/0/3/0/24	-
			Nereididae	<i>Hediste diversicolor</i> (O.F. Müller, 1776)	-	-	-	
			Phyllodoceidae	<i>Phyllodoce groenlandica</i> Örsted, 1842	-	-	-	
			Polynoidae	<i>Paralepidonotus ampulliferus</i> (Grube, 1878)	-	-	-	
		Sabellida	Oweniidae	<i>Owenia fusiformis</i> Delle Chiaje, 1844	-	-	-	
		Terebellida	Cirratulidae	Cirratulidae ni	-	-	-	
			Pectinariidae	<i>Lagis koreni</i> Malmgren, 1866	-	-	-	
			Terebellidae	<i>Pista cristata</i> (Müller, 1776)	19917/0/187/12/69	34751/93/211/8/4	-	
			Trichobranchinae	<i>Trichobranchus glacialis</i> Malmgren, 1866	0/0/0/0/8	0/17/0/0/4	-	
		Haplotaxida	Tubificidae	<i>Chaetogaster diaphanus</i> (Gruithuisen, 1828)	-	-	-	
				<i>Nais communis</i> Pignet, 1906	-	-	-	
				<i>Stylaria lacustris</i> (Linnaeus, 1767)	-	-	-	
		Lumbriculida	Lumbriculidae	<i>Lumbriculus variegatus</i> (Müller, 1774)	-	-	-	
		Cirripedia	Sessilia	Balanidae	<i>Amphibalanus amphitrite</i> (Darwin, 1854)	-	4/0/0/0/0	-
	Copepoda	Calanoida	Acartiidae	<i>Paracartia grani</i> Sars G.O., 1904	-	-	-	
			Centropagidae	<i>Centropages hamatus</i> (Lilljeborg, 1853)	-	-	-	
			Temoridae	<i>Temora longicornis</i> (Müller O.F., 1785)	-	-	-	
		Cyclopoida	Cyclopoida ni	-	3/0/0/0/0	-		
		Poecilostomatoida	Mytilicolidae	<i>Mytilicola orientalis</i> Mori, 1935	-	-	-	
	Malacostraca	Amphipoda	Ampeliscidae	<i>Ampelisca brevicornis</i> (Costa, 1853)	-	0/0/14/0/0	1/0/0/0/1	
				<i>Ampelisca sp.</i>	0/372/115/629/0	0/12/307/7/0	-	
			Corophiidae	<i>Corophium sp.</i>	0/0/183/16/173	0/0/80/4/34	-	
	Isopoda	Anthuridae	<i>Cyathura carinata</i> (Krøyer, 1847)	-	-	0/0/0/1/0		
		Sphaeromatidae	Sphaeromatidae ni	-	-	-		
	Decapoda	Callianassidae	<i>Pestarella tyrrhena</i> (Petagna, 1792)	-	0/3/0/0/0	-		

				Diogenidae	<i>Diogenes pugilator</i> (Roux, 1829)	0/0/0/1194/0	0/0/0/89/0	-
				Inachidae	<i>Macropodia rostrata</i> (Linnaeus, 1761)	13/0/0/0/0	-	-
					<i>Macropodia sp.</i>	838/0/13/0/0	24/0/6/0/0	-
				Paguridae	<i>Pylopaguropsis magnimanus</i>	0/0/0/23406/0	0/16/0/26927/0	-
				Pilumnidae	<i>Pilumnus hirtellus</i> (Linnaeus, 1761)	-	-	-
					<i>Pilumnus spinifer</i> H. Milne Edwards, 1834	-	-	-
				Pinnotheridae	<i>Pinnotheres pisum</i> (Linnaeus, 1767)	0/0/0/0/23	0/0/0/0/3	-
				Upogebiidae	<i>Upogebia deltaura</i> (Leach, 1815)	-	-	-
Bryozoa	Gymnolaemata	Cheilostomatida		Bugulidae	<i>Bugula neritina</i> (Linnaeus, 1758)	-	-	-
Echinodermata	Echinoidea	Spatangoida		Loveniidae	<i>Echinocardium cordatum</i> (Pennant, 1777)	0/0/0/35176/5	-	-
Mollusca	Bivalvia	Anomalodesmata		Thraciidae	<i>Thracia phaseolina</i> (Lamarck, 1818)	6/0/0/0/0	17/0/0/0/0	-
		Myoida		Corbulidae	<i>Corbula gibba</i> (Olivi, 1792)	-	-	-
		Veneroida		Cardiidae	<i>Cerastoderma edule</i> (Linnaeus, 1758)	-	-	-
					<i>Parvicardium exiguum</i> (Gmelin, 1791)	-	-	-
					<i>Parvicardium pinnulatum</i> (Conrad, 1831)	-	-	-
				Donacidae	<i>Donax trunculus</i> Linnaeus, 1758	-	-	2/0/0/0/0
				Mactridae	<i>Spisula solida</i> (Linnaeus, 1758)	-	-	-
				Semelidae	<i>Abra alba</i> (W. Wood, 1802)	-	-	0/0/0/0/1
				Ungulinidae	<i>Diplodonta rotundata</i> (Montagu, 1803)	-	-	-
				Veneridae	<i>Chamelea striatula</i> (da Costa, 1778)	8/0/0/0/0	112/0/0/0/0	-
		[unassigned]						
		Euheterodonta		Solenidae	<i>Solen marginatus</i> Pulteney, 1799	-	-	-
		Gastropoda		Hydrobiidae	<i>Ecrobia ventrosa</i> (Montagu, 1803)	-	-	-
		Littorinimorpha		Nassariidae	<i>Nassarius reticulatus</i> (Linnaeus, 1758)	0/12/0/3/0	4/3/0/5/0	-
		Neogastropoda		Lineidae	<i>Cerebratulus longiceps</i> Coe, 1901	-	-	-
Nemertea	Anopla				<i>Cerebratulus sp.</i>	11/0/0/53/0	4/0/0/0/0	-
					<i>Pyropia haitanensis</i> (T.J.Chang & B.F.Zheng) N.Kikuchi & M.Miyata, 2011	-	-	-
Plantae	Rhodophyta	Bangiophyceae	Bangiales	Bangiaceae		-	-	-
		Florideophyceae	Ceramiales	Ceramiaceae	<i>Ceramium secundatum</i> Lyngbye, 1819	-	-	-
Chromista	Ochrophyta	Phaeophyceae	Fucales	Durvillaeaceae	<i>Durvillaea sp.</i>	-	-	-
			Ectocarpales	Chordariaceae	<i>Leathesia marina</i> (Lyngbye) Decaisne, 1842	-	0/0/0/13/0	-
			Scytosiphonales	Scytosiphonaceae	<i>Petalonia fascia</i> (O.F.Müller) Kuntze, 1898	0/0/0/44/0	0/0/0/7/0	-
					<i>Scytosiphon lomentaria</i> (Lyngbye) Link, 1833	0/0/0/8/0	0/0/0/4/0	-

---



---

**NMC4**

---

Kingdom	Phylum	Class	Order	Family	Species	HTS B	HTS D	Morph.			
Animalia	Annelida	Polychaeta		Capitellidae	<i>Notomastus profundus</i> (Eisig, 1887)	-	0/0/0/39	2/2/1/1/2			
				Maldanidae	<i>Axiothella constricta</i> (Claparède, 1869)	-	-	0/1/0/0/2			
					<i>Euclymene santandarensis</i> (Rioja, 1917)	6/0/14/0/94	0/4/0/0/0	-			
					<i>Euclymene sp.</i>	81884/0/3/4/17379	4141/0/0/0400	-			
					<i>Heteroclymene robusta</i> Arwidsson, 1906	0/8/54/5/0	-	-			
					<i>Leiochone leiopygos</i> (Grube, 1860)	66883/0/3682/0/5683	23424/4/93/13/47	-			
					<i>Leiochone sp.</i>	5481/8529/19580/0/5	6578/7055/9972/9/0	-			
					<i>Praxillella praetermissa</i> (Malmgren, 1865)	17/10096/9/214979/143	16/84/3/33374/0	-			
					Orbiniidae	Orbiniidae ni	0/0/0/0/110	-	-		
					Eunicida	Eunicidae	<i>Marphysa sanguinea</i> (Montagu, 1815)	14/0/0/0/0	0/3/0/0/0	-	
							<i>Marphysa sp.</i>	-	-	-	
						Onuphidae	<i>Diopatra aciculata</i> Knox & Cameron, 1971	-	-	-	
						<i>Diopatra marocensis</i> Paxton, Fadlaoui & Lechapt, 1995	0/0/0/7/0	0/0/0/4/0	-		
						<i>Diopatra neapolitana</i> Delle Chiaje, 1841	3/0/0/0/100	0/36/0/0/0	-		
					Phyllodocida	Glyceridae	<i>Glycera alba</i> (O.F. Müller, 1776)	2824/26489/96088/5/18	3083/37774/68109/6/0	-	
							<i>Glycera sp.</i>	3017/27374101978/7/21	3083/37768/68083/6/0	-	
							<i>Glycera tridactyla</i> Schmarda, 1861	-	0/15/44/0/0	-	
						Nephtyidae	<i>Nephtys cirrosa</i> Ehlers, 1868	-	-	-	
							<i>Nephtys hombergii</i> Savigny in Lamarck, 1818	6/0/43/3/7	0/0/5/0/0	-	
						Nereididae	<i>Hediste diversicolor</i> (O.F. Müller, 1776)	-	-	-	
						Phyllodoceidae	<i>Phyllodoce groenlandica</i> Örsted, 1842	-	-	-	
						Polynoidae	<i>Paralepidonotus ampulliferus</i> (Grube, 1878)	-	-	-	
					Sabellida	Oweniidae	<i>Owenia fusiformis</i> Delle Chiaje, 1844	-	-	-	
					Terebellida	Cirratulidae	Cirratulidae ni	-	-	-	
						Pectinariidae	<i>Lagis koreni</i> Malmgren, 1866	219/0/0/0/0	984/0/0/0/0	-	
						Terebellidae	<i>Pista cristata</i> (Müller, 1776)	15462/97719/14039/7208/37	29861/88881/11545/12673/3	0/1/0/1/0	
						Trichobranchinae	<i>Trichobranthus glacialis</i> Malmgren, 1866	3038/0/0/3/0	17917/0/6/3/0	-	
					Clitellata	Haplotaxida	Tubificidae	<i>Chaetogaster diaphanus</i> (Gruithuisen, 1828)	-	-	-
								<i>Nais communis</i> Piguët, 1906	-	-	-
								<i>Stylaria lacustris</i> (Linnaeus, 1767)	0/0/6/0/4	0/4/0/0/44	-
						Lumbriculida	Lumbriculidae	<i>Lumbriculus variegatus</i> (Müller, 1774)	9/0/0/0/0	-	-
				Arthropoda	Cirripedia	Sessilia	Balanidae	<i>Amphibalanus amphitrite</i> (Darwin, 1854)	-	-	-
	Copepoda	Calanoida	Acartiidae		<i>Paracartia grani</i> Sars G.O., 1904	-	-	-			

			Centropagidae	<i>Centropages hamatus</i> (Lilljeborg, 1853)	-	-	-
			Temoridae	<i>Temora longicornis</i> (Müller O.F., 1785)	0/0/0/10/0	0/0/0/25/0	-
		Cyclopoida		Cyclopoida ni	-	-	-
		Poecilostomatoida	Mytilicolidae	<i>Mytilicola orientalis</i> Mori, 1935	-	0/0/39/0/0	-
	Malacostraca	Amphipoda	Ampeliscidae	<i>Ampelisca brevicornis</i> (Costa, 1853)	-	0/0/0/20/0	-
				<i>Ampelisca sp.</i>	0/0/0/1693/0	0/0/0/720/0	-
			Corophiidae	<i>Corophium sp.</i>	0/8/0/0/0	-	-
		Isopoda	Anthuridae	<i>Cyathura carinata</i> (Krøyer, 1847)	-	-	1/0/1/0/1
			Sphaeromatidae	Sphaeromatidae ni	0/0/0/0/548		
		Decapoda	Callianassidae	<i>Pestarella tyrrhena</i> (Petagna, 1792)	2206/0/0/0/0	1152/0/0/0/0	-
			Diogenidae	<i>Diogenes pugilator</i> (Roux, 1829)	-	-	-
			Inachidae	<i>Macropodia rostrata</i> (Linnaeus, 1761)	-	-	-
				<i>Macropodia sp.</i>	-	-	-
			Paguridae	<i>Pylopaguropsis magnimanus</i>	-	-	-
			Pilumnidae	<i>Pilumnus hirtellus</i> (Linnaeus, 1761)	0/0/6/14/0	-	-
				<i>Pilumnus spinifer</i> H. Milne Edwards, 1834	-	-	-
			Pinnotheridae	<i>Pinnotheres pisum</i> (Linnaeus, 1767)	0/15402/12676/0/845	0/716/479/0/16	0/0/0/1/0
			Upogebiidae	<i>Upogebia deltaura</i> (Leach, 1815)	-	-	-
Bryozoa	Gymnolaemata	Cheilostomatida	Bugulidae	<i>Bugula neritina</i> (Linnaeus, 1758)	0/0/51/0/0	0/0/0/12/0	-
Echinodermata	Echinoidea	Spatangoida	Loveniidae	<i>Echinocardium cordatum</i> (Pennant, 1777)	4/0/0/0/0	-	0/0/0/0/1
Mollusca	Bivalvia	Anomalodesmata	Thraciidae	<i>Thracia phaseolina</i> (Lamarck, 1818)	0/0/0/0/117	0/0/0/0/135	-
		Myoida	Corbulidae	<i>Corbula gibba</i> (Olivi, 1792)	-	-	0/1/0/1/0
		Veneroida	Cardiidae	<i>Cerastoderma edule</i> (Linnaeus, 1758)	0/0/22/0/21	0/5/129/0/105	0/2/1/1/1
				<i>Parvicardium exiguum</i> (Gmelin, 1791)	-	-	-
				<i>Parvicardium pinnulatum</i> (Conrad, 1831)	-	-	-
			Donacidae	<i>Donax trunculus</i> Linnaeus, 1758	-	-	-
			Mactridae	<i>Spisula solida</i> (Linnaeus, 1758)	-	-	0/0/0/0/1
			Semelidae	<i>Abra alba</i> (W. Wood, 1802)	-	-	0/0/0/1/0
			Ungulinidae	<i>Diplodonta rotundata</i> (Montagu, 1803)	-	-	-
			Veneridae	<i>Chamelea striatula</i> (da Costa, 1778)	-	-	-
		[unassigned]					
		Euheterodonta	Solenidae	<i>Solen marginatus</i> Pulteney, 1799	-	-	0/0/1/1/0
	Gastropoda	Littorinimorpha	Hydrobiidae	<i>Ecrobia ventrosa</i> (Montagu, 1803)	-	-	-
		Neogastropoda	Nassariidae	<i>Nassarius reticulatus</i> (Linnaeus, 1758)	0/4/0/0/12	0/16/0/0/0	-
Nemertea	Anopla		Lineidae	<i>Cerebratulus longiceps</i> Coe, 1901	-	0/0/0/4/0	-

					<i>Cerebratulus sp.</i>	-	-	-
Plantae	Rhodophyta	Bangiophyceae	Bangiales	Bangiaceae	<i>Pyropia haitanensis</i> (T.J.Chang & B.F.Zheng) N.Kikuchi & M.Miyata, 2011	0/0/0/3/0	-	-
		Florideophyceae	Ceramiales	Ceramiaceae	<i>Ceramium secundatum</i> Lyngbye, 1819	0/0/104/0/0	0/0/0/272/0	-
Chromista	Ochrophyta	Phaeophyceae	Fucales	Durvillaeaceae	<i>Durvillaea sp.</i>	-	-	-
			Ectocarpales	Chordariaceae	<i>Leathesia marina</i> (Lyngbye) Decaisne, 1842	-	-	-
			Scytosiphonales	Scytosiphonaceae	<i>Petalonia fascia</i> (O.F.Müller) Kuntze, 1898	-	-	-
					<i>Scytosiphon lomentaria</i> (Lyngbye) Link, 1833	-	-	-

---