

# **LncRNA MALAT1 inhibits apoptosis and promotes invasion by antagonizing miR-125b in bladder cancer**

Haibiao Xie<sup>1,2\*</sup>, Xinhui Liao<sup>1,3\*</sup>, Zhicong Chen<sup>1,2\*</sup>, Yuan Fang<sup>1</sup>, Anbang He<sup>1</sup>, Yucheng Zhong<sup>1</sup>, Qunjun Gao<sup>1</sup>, Huizhong Xiao<sup>1</sup>, Jianfa Li<sup>1,2,4Ψ</sup>, Weiren Huang<sup>1Ψ</sup>, Yuchen Liu<sup>1,2Ψ</sup>

<sup>1</sup> Key Laboratory of Medical Reprogramming Technology, Department of Urology, Shenzhen Second People's Hospital, First Affiliated Hospital of Shenzhen University, Shenzhen 518039, Guangdong Province, China

<sup>2</sup> Shantou University Medical College, Shantou 515041, Guangdong Province, China

<sup>3</sup> Department of Urology, Shenzhen Second People's Hospital, First Affiliated Hospital of Shenzhen University, Shenzhen 518039, Guangdong Province, China

<sup>4</sup> Guangdong and Shenzhen Key Laboratory of Male Reproductive Medicine and Genetics, Institute of Urology, Peking University Shenzhen Hospital, Peking University, Shenzhen 518036, China

\*Equal contributors

Correspondence to: JianfaLi, email: lijianfayouxiang@163.com

Weiren Huang, email: pony8980@163.com

YuchenLiu, email: liuyuchenmdcg@163.com

## **Disclosure-conflict of interest:**

The authors declared that they have no conflicts of interest to this work.

Fig.1F

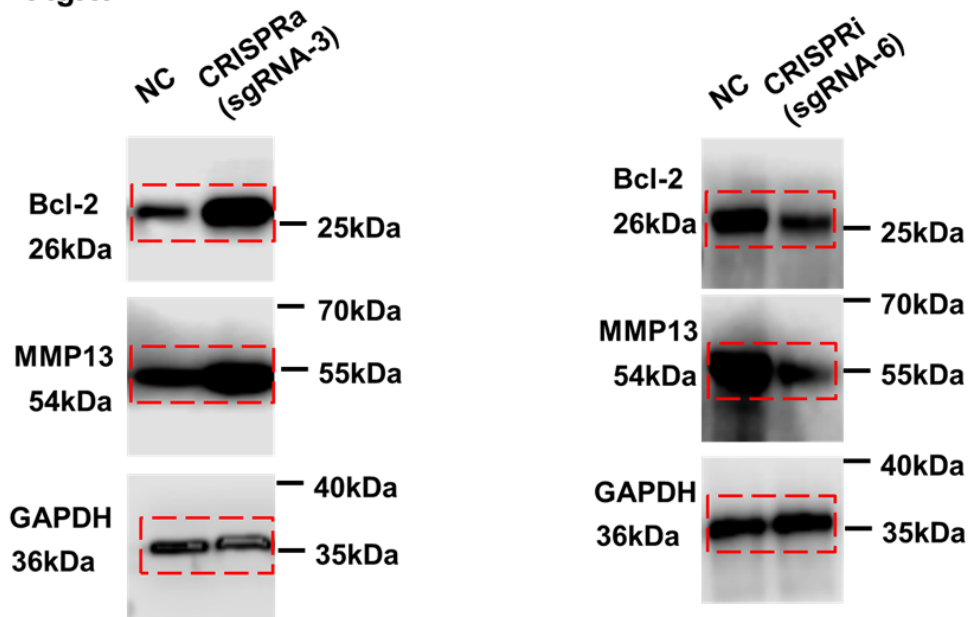
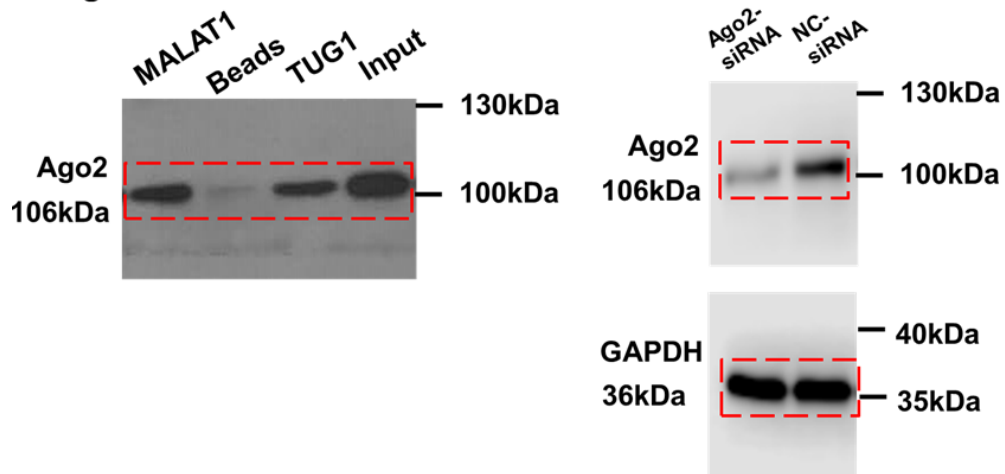
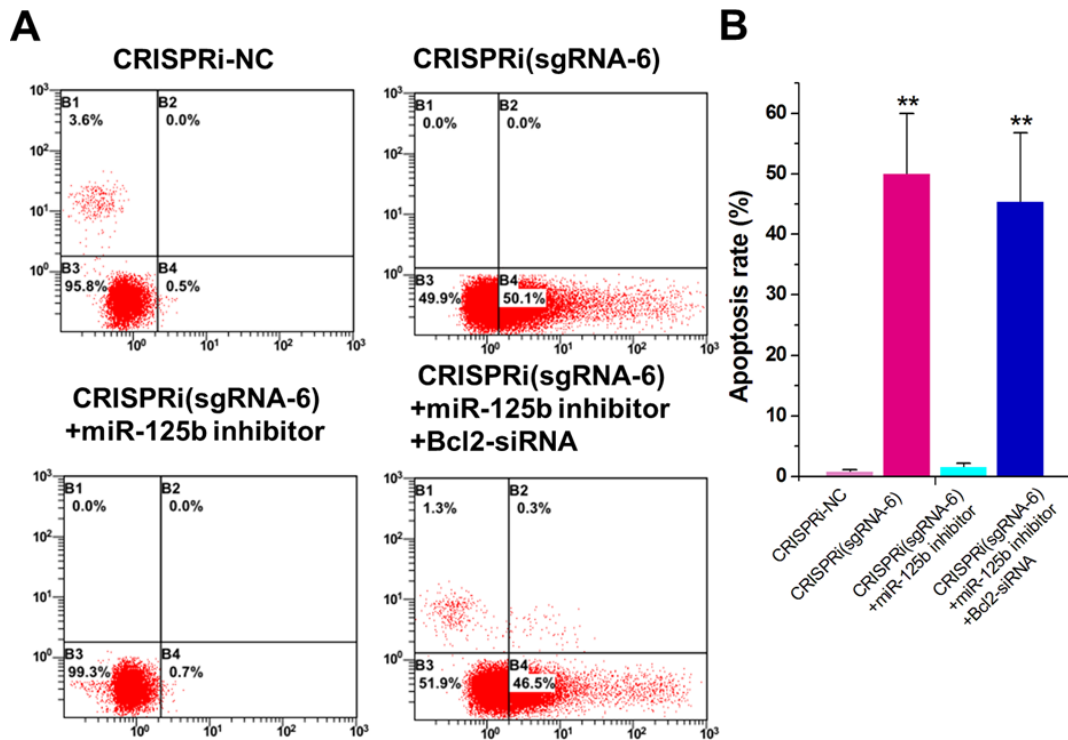


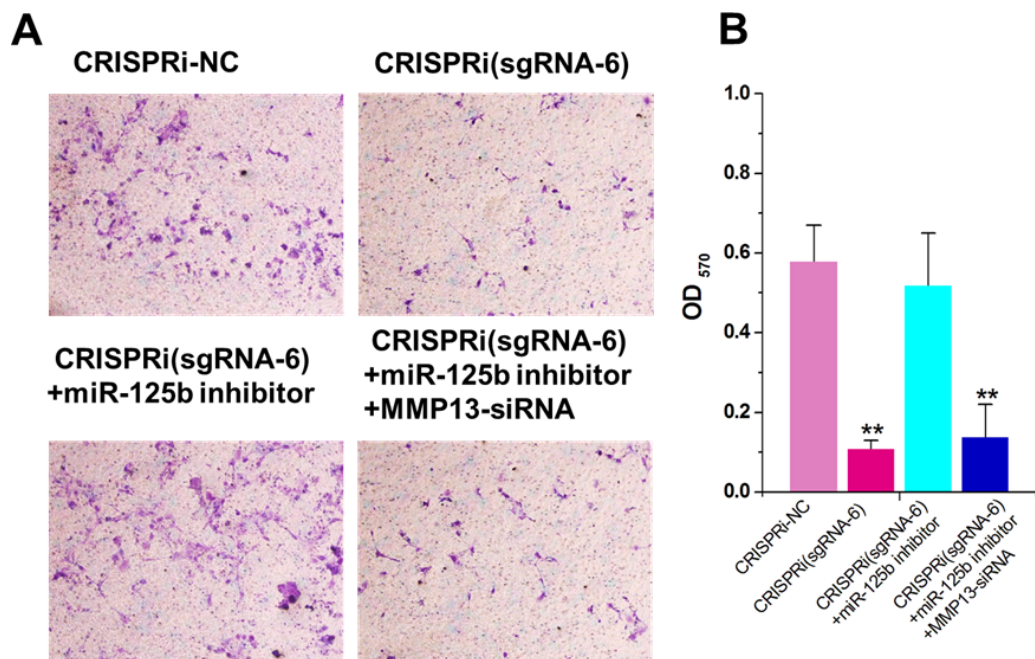
Fig.2A



Supplementary Figure 1. Uncropped blots of western blot results presented in the main paper.



**Supplementary Figure 2. miR-125b inhibitor partly reversed the apoptotic changes caused by CRISPRi-MALAT1 in 5637 cells.** A) Cell apoptosis changes were determined using flow cytometry analysis and representative images in 5637 cells were shown. B) Cell apoptosis induction observed in 5637 cells. The error bars indicate the s.d. from three different experiments. NC, negative control. \*\* $P < 0.01$ , relative to the negative control group by paired, one-sided t-test.



**Supplementary Figure 3. miR-125b inhibitor partly reversed the motility changes caused by CRISPRi-MALAT1 in 5637 cells.** A) Cell motility changes were determined using transwell assay and representative images in 5637 cells were shown. B) Inhibition of cell invasion observed in 5637 cells. The error bars indicate the s.d. from three different experiments. NC, negative control. \*\* $P < 0.01$ , relative to the negative control group by paired, one-sided t-test.