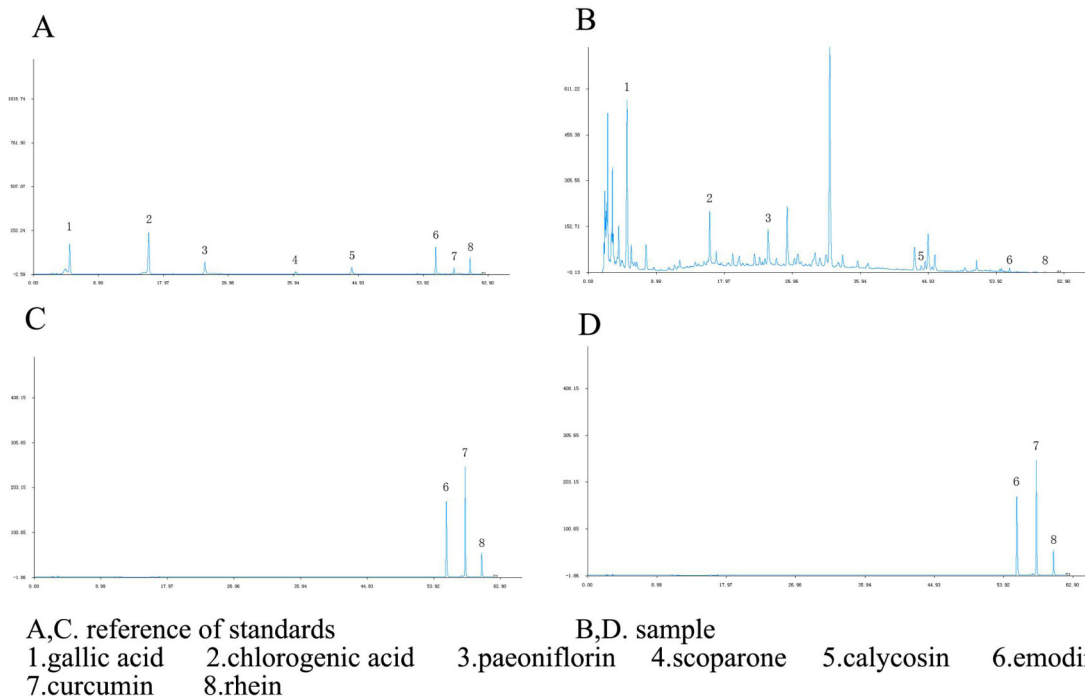


SHYCD induces APE1/Ref-1 subcellular localization to regulate the p53-apoptosis signaling pathway in the prevention and treatment of acute on chronic liver failure

SUPPLEMENTARY MATERIALS



Supplementary Figure 1: chromatograms of reference of standards, sample at 280, 430nm, respectively. A, C:reference of standards B, D:sample. 1.gallic acid ; 2.chlorogenic acid; 3.paeoniflorin 4.scoparone; 5.calycosin; 6.emodin; 7.curcumin 8.rhein