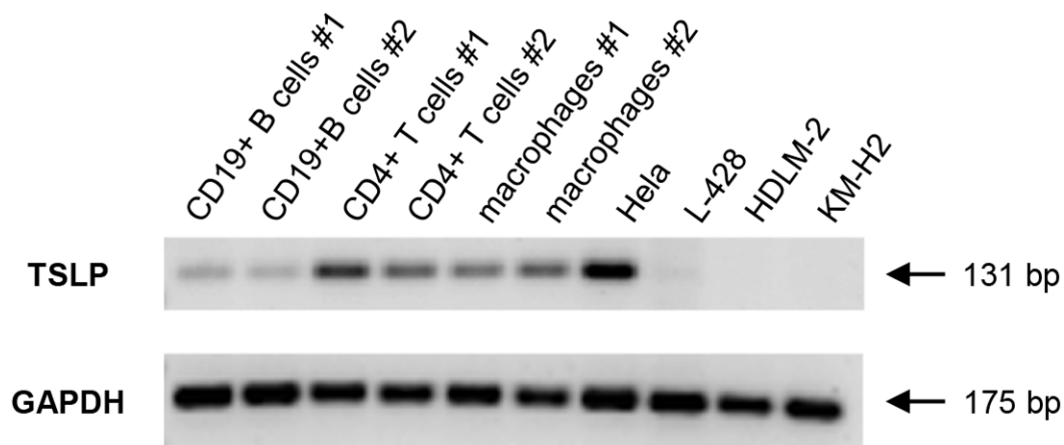
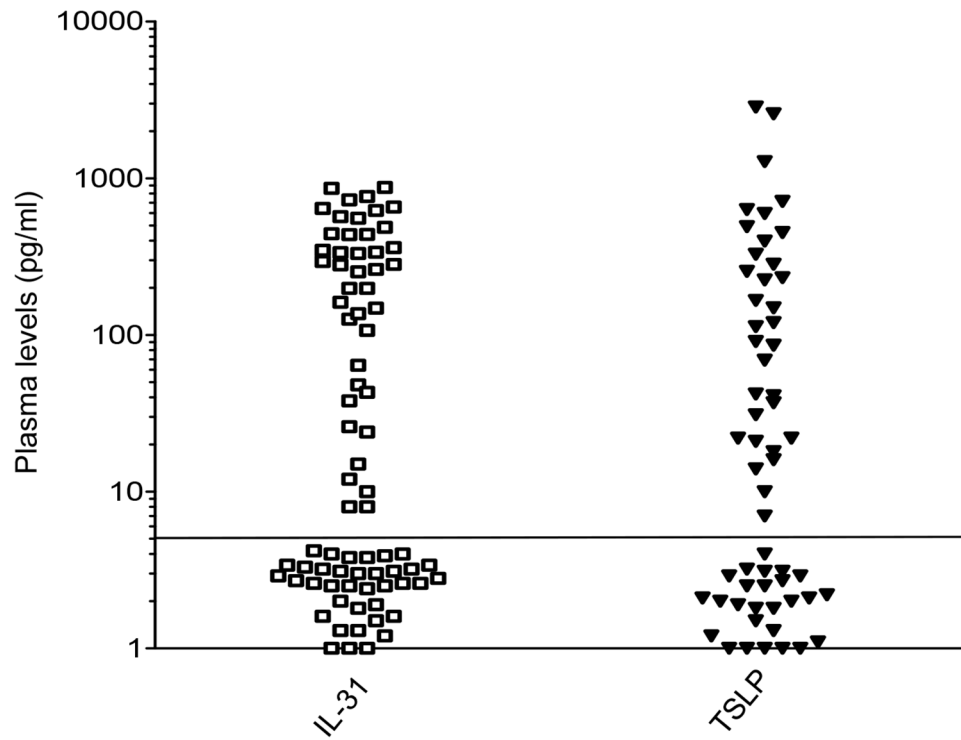


Interleukin-31 and thymic stromal lymphopoietin expression in plasma and lymph node from Hodgkin lymphoma patients

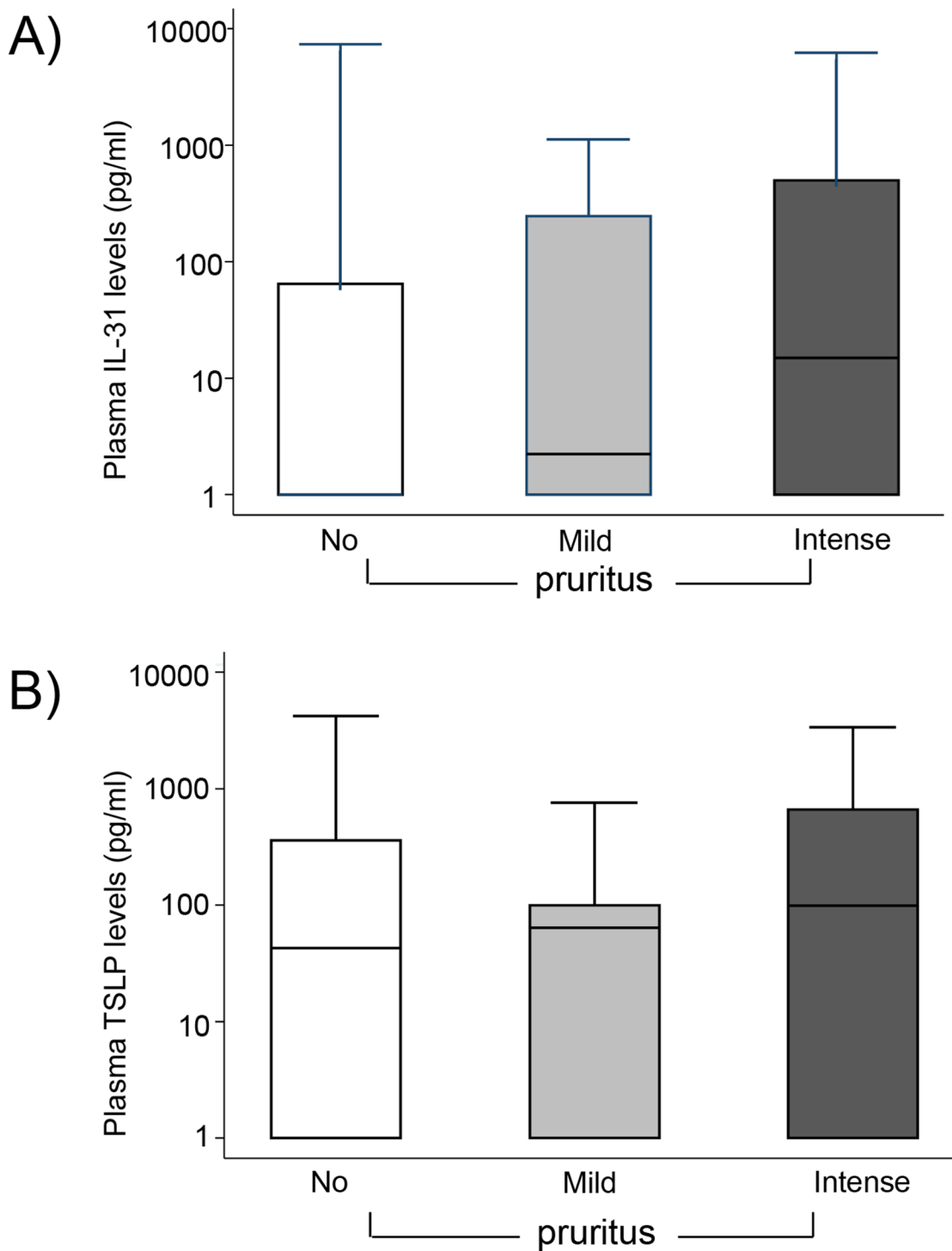
SUPPLEMENTARY MATERIALS



Supplementary Figure 1: mRNA expression of the TSLP and GAPDH genes. mRNA was detected by RT-PCR in CD19+B cells, CD4+T cells, and in three HL cell lines (L-428, HDLM-2, KM-H2). The HeLa cell line was tested as positive control.



Supplementary Figure 2: IL-31/TSLP plasma levels in healthy controls. sIL-31/TSLP levels were assayed by ELISA (threshold of detection 5 pg/ml).sIL-31 was detected in 42/84 donors, sTSLP in 32/59 donors. The horizontal line separates positive from negative results.



Supplementary Figure 3: IL-31 and TSLP plasma levels and pruritus in HL patients. sIL-31 (A) and sTSLP (B) plasma levels (pg/ml) in 69 HL patients were correlated with pruritus defined as: none, mild, and intense. Results are expressed in box plot as median levels, first and third quartiles, maximum and minimum values.

Supplementary Table 1: IL-31 and TSLP expression

	HL lymph node				Reactive lymph node			
	IL-31 surface	IL-31 intracellular	TSLP surface	TSLP intracellular	IL-31 surface	IL-31 intracellular	TSLP surface	TSLP intracellular
Median MRFI on CD19+ cells	19 (8.3-34)	5.5 (4.6-7.2)	1.1 (1.0-1.3)	2.4 (1.1-2.8)	16.8 (9-28.9)	3.9 (3-5)	1.6 (1-2)	2.8 (2.1-3)
Median MRFI on CD4+ cells	1.7 (1.5-5.3)	4.1 (3.0-5.2)	1.1 (1.0-1.3)	2.2 (1.2-3.8)	1.7 (1-3.6)	3.2 (2-5.8)	1.3 (1.1-1.4)	2.4 (1.3-4.9)
Median MRFI on CD68+ cells	18.5 (4.2-26)	8.6 (5.4-12.5)	4.6 (3.1- 10.5)	3.9 (3.4-4.2)	23 (3.8-40)	8.5 (4.6-13.8)	4.9 (2.2- 10.7)	3.8 (1-6.3)

Median MRFI of IL-31 and TSLP detected in immune cell populations from both HL and control reactive lymph nodes.

Supplementary Table 2: IL-31 and TSLP receptors expression

	HL lymph node				Reactive lymph node			
	IL-31RA	OSMR	TSLPR	CD127	IL-31RA	OSMR	TSLPR	CD127
Median MRFI on CD19+ cells	2.1 (1.5-2.8)	3 (2-4.8)	1.9 (1.2-2.5)	2.2 (1.6-2.9)	2.3 (1.5-3.7)	3.2 (2.4-4.7)	1.6 (1.3-2.1)	2.1 (1.7-2.9)
Median MRFI on CD4+ cells	2 (1-2.9)	2.7 (1.6-3.2)	1.2 (1-2.2)	6.2 (2.2-7.5)	1.9 (2.6-2.2)	3.2 (2.6-3.7)	2.1 (1.2-2.4)	5.6 (3.3-8)
Median MRFI on CD68+ cells	2.7 (1.8-6)	2.8 (2.2-4.2)	2 (1-2.5)	2.1 (1.8-2.4)	3.4 (1.5-4.6)	4 (2.9-3)	1.6 (1.2-3.1)	2.4 (2-2.8)

Median MRFI of IL-31R and TSLPR detected in immune cell populations from both HL and control reactive lymph nodes.