

Supplemental Figure Legend

SFigure 1 Forrest plot for overall survival after the four studies that included single subtypes of breast cancer patients were all deleted

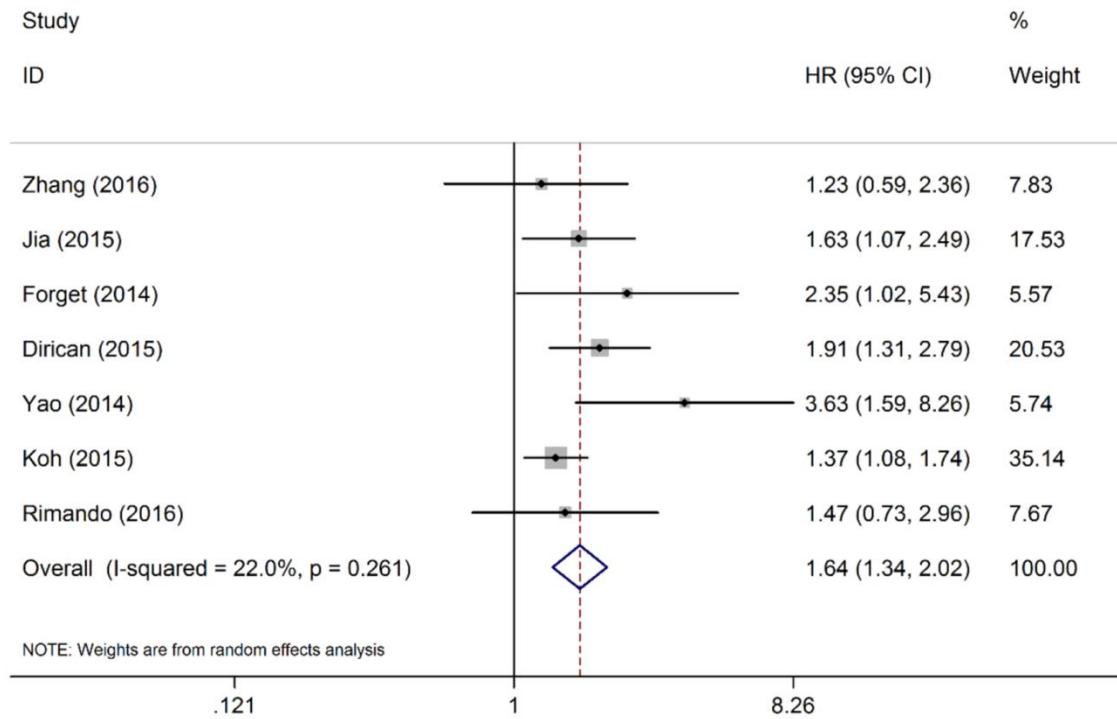
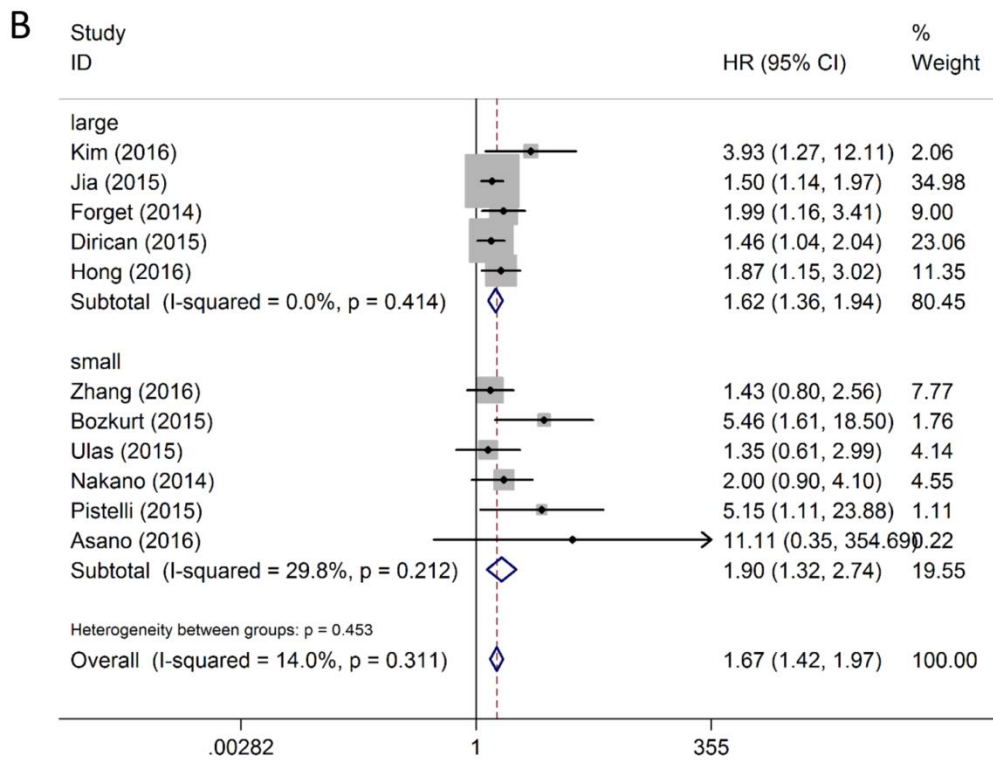
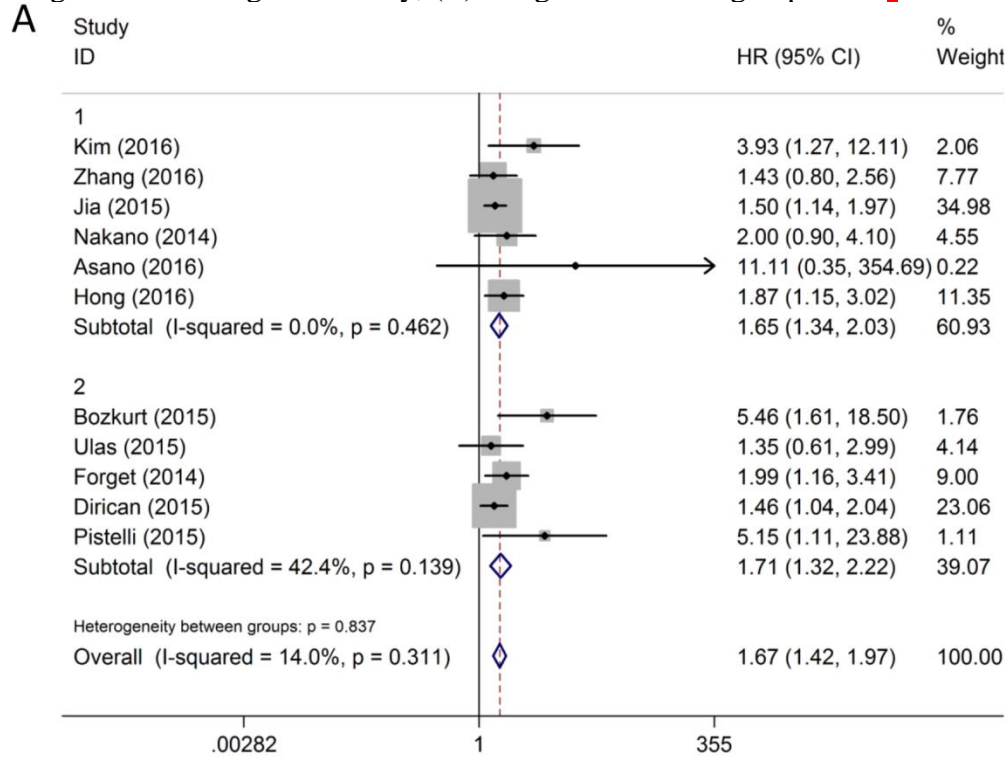


Figure 2 subgroup analysis of disease-free survival with the deletion of Supp1 study: (A) categories according to ethnicity; (B) categories according to patients number



SFigure 3 sensitivity analysis of each study: (A) for disease-free survival, (B) for overall survival; (C) for cancer-specific survival

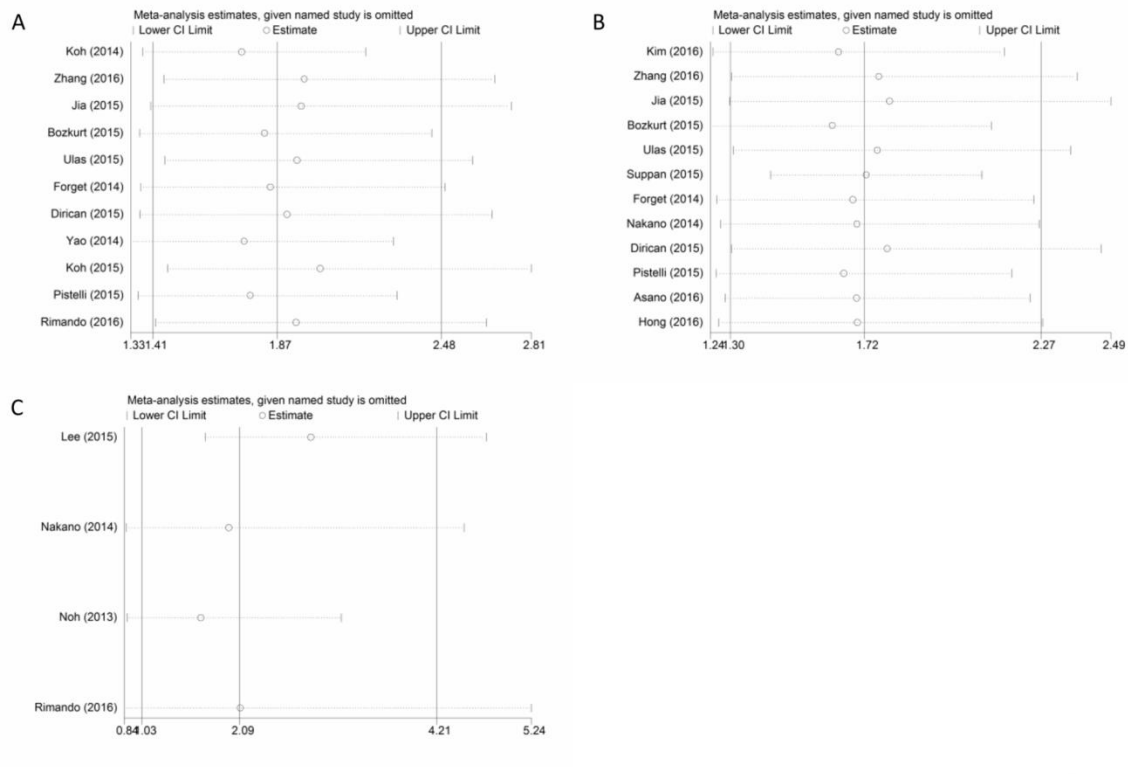


Figure 4 publication bias estimated by Egger's method: (A) for disease-free survival; (B) for overall survival

