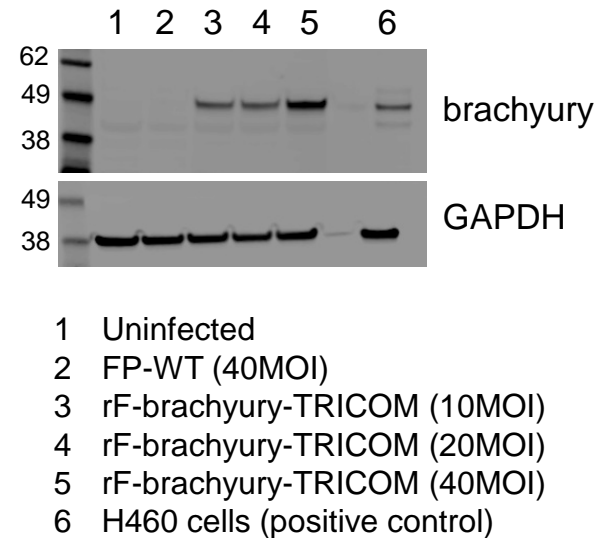


A

Marker	% pos	MFI
Uninfected DCs		
CD54	75.2	191
CD58	82.3	153
CD80	10.3	105
FP-WT (40 MOI)		
CD54	79.1	215
CD58	80.7	179
CD80	10.7	101
rF-Brachyury-TRICOM (10 MOI)		
CD54	85.3	284
CD58	83.8	198
CD80	29.8	151
rF-Brachyury-TRICOM (20 MOI)		
CD54	86.2	337
CD58	85.5	221
CD80	36.8	189
rF-Brachyury-TRICOM (40 MOI)		
CD54	91.8	991
CD58	88.7	343
CD80	60	264

B



Supplementary Figure S1. Characterization of rF-brachyury-TRICOM. **(A)** FACS analysis of CD54, CD58 and CD80 costimulatory molecules expressed on human DCs following infection with indicated vectors at indicated MOIs (multiplicity of infection). Shown are the % positive cells and the MFI (mean fluorescence intensity). **(B)** Western blot analysis of protein lysates from human DCs infected with indicated vectors and evaluated with a brachyury-specific monoclonal antibody (MAb-54-1). H460 cells are brachyury positive and were used as a positive control. GAPDH is shown as a loading control.