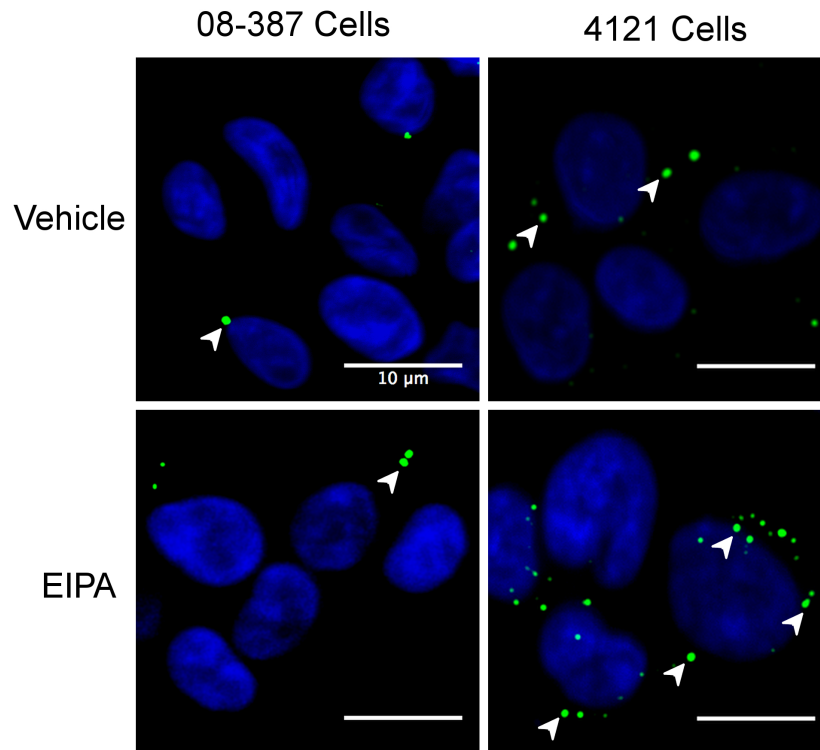


## Paired CD133-negative Tumor Cells



*S*Figure 2. The internalization of bevacizumab by CD133-negative non-stem GBM tumor cells was not inhibited by EIPA. Paired CD133-negative cells (08-387 and 4121 GBM tumors) were plated, treated with EIPA and bevacizumab as described in Figure 3E-G, followed by staining with Alexa-488-anti-human IgG, DAPI nuclear stain, coverslipping and microscopy.