

Suppl Figure 4

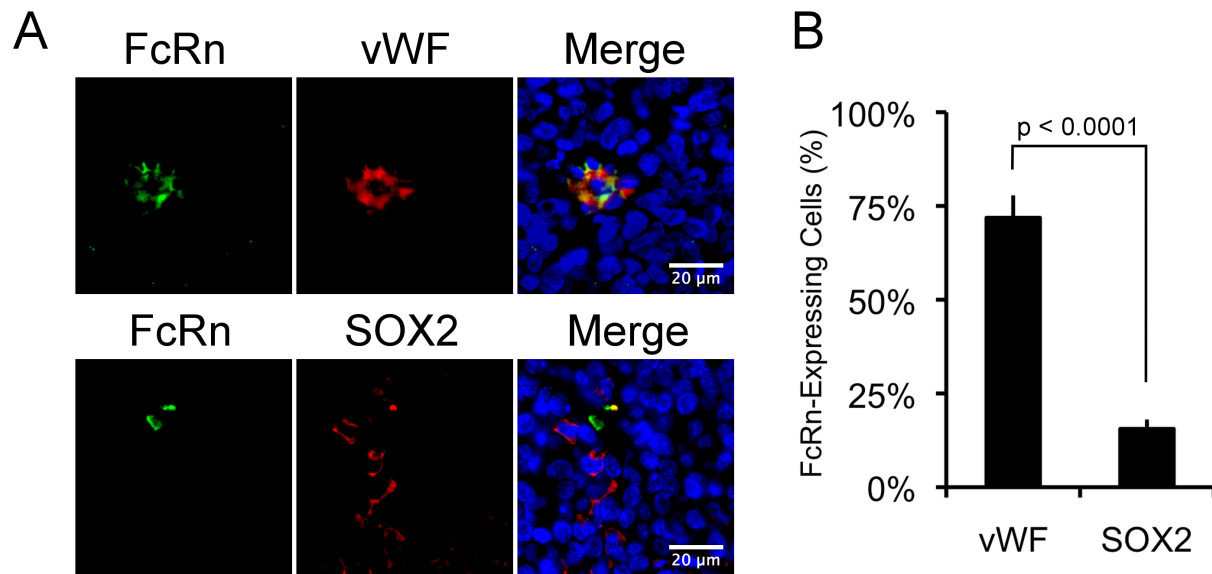


Figure 4. FcRn staining largely colocalizes with the endothelial cell marker vWf in xenograft GBM tumors. A, Sections of five GBM xenograft tumors were reacted with rabbit anti-FcRn and mouse anti-vWf, or with rabbit anti-FcRn and mouse anti-Sox2 followed by Alexa-488- and Alexa-594-secondary antibodies, DAPI nuclear stain, coverslipping and microscopy. B, Double-labeled cells for FcRn and vWf, or Sox2 and FcRn were counted in five fields from each tumor, and the data plotted as the mean±SEM. We found significantly more expression of FcRn in the vWf-positive cells as compared to the Sox2⁺ cells (adjusted mean 72.1 vs. 15.9, respectively, p <0.0001). Statistical analysis: linear mixed model.