

	<i>Dolichospermum macrosporum</i>	<i>Dolichospermum flos-aquae</i>
December 2014 (pelagic) versus December 2014 (littoral)	Pelagic>Litoral***	Pelagic>Litoral***
December 2015 (pelagic) versus December 2015 (littoral)	Pelagic>Litoral***	Pelagic>Litoral***
April 2015 (pelagic) versus April 2015 (littoral)	Pelagic>Litoral***	Pelagic>Litoral***
December 2014 (pelagic) versus April 2015 (pelagic)	December 2014<April 2015***	December 2014<April 2015**
December 2014 (littoral) versus April 2015 (littoral)	December>April 2015*	December>April 2015***
December 2014 (pelagic) versus December 2015 (pelagic)	December 2014>December 2015***	December 2014>December 2015*
April 2015 (pelagic) versus December 2015 (pelagic)	April 2015>December 2015***	April 2015>December 2015*
December 2014 (littoral) versus December 2015 (littoral)	December 2014>December 2015***	December 2014>December 2015***
April 2015 (littoral) versus December 2015 (littoral)	April 2015>December 2015***	April 2015>December 2015***

Table S1: Student tests highlighting the spatial and temporal differences of akinete distributions in sediment (***) represents a p value ≤ 0.001 , ** represents $0.01 \leq p$ value < 0.001 and * represents $0.05 \leq p$ value < 0.01)

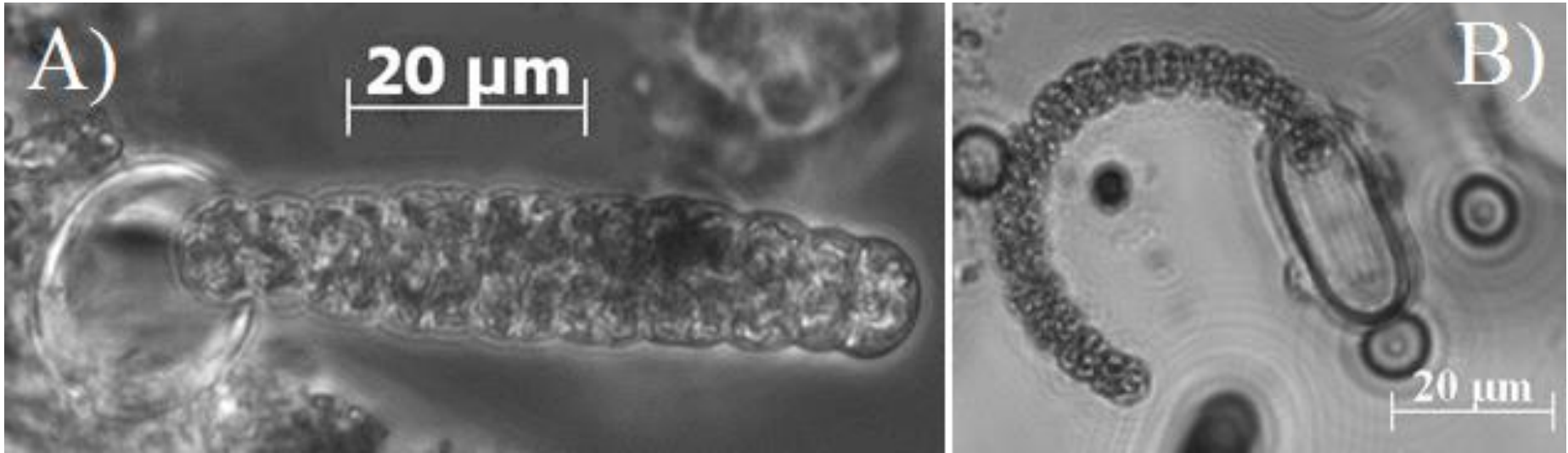


Figure S1: Photomicrographs of (A) *D. macrosporum* and (B) *D. flos-aquae* hormogonia.