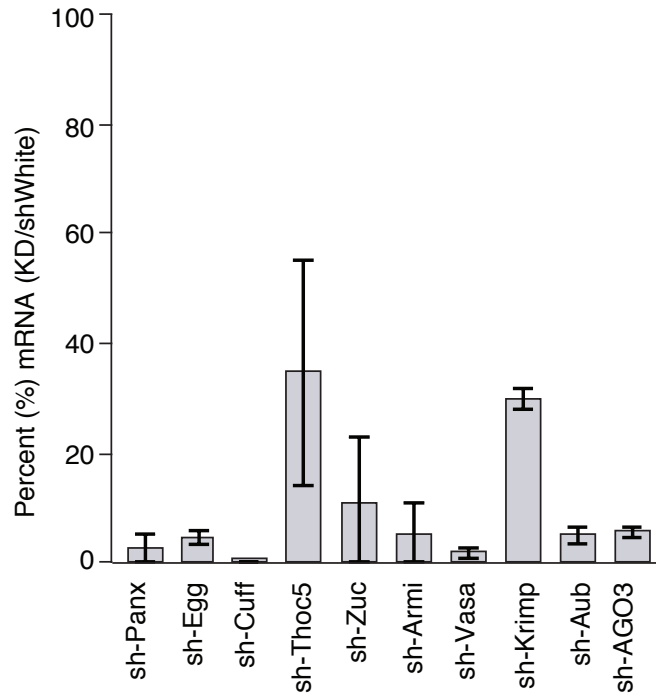


Rogers et al. Supplementary Figure 5

Percent mRNA remaining after KD, normalized to shW & RP49



Supplemental Figure 5. Percent mRNA remaining after knockdown of piRNA pathway component mRNAs in the tethering system. Knockdown efficiency of each mRNA was measured using RT-QPCR from total ovarian RNA, normalized to RP49 and to RNA levels in the control (shWhite). Error bars indicate standard deviation of biological replicates (n=2).