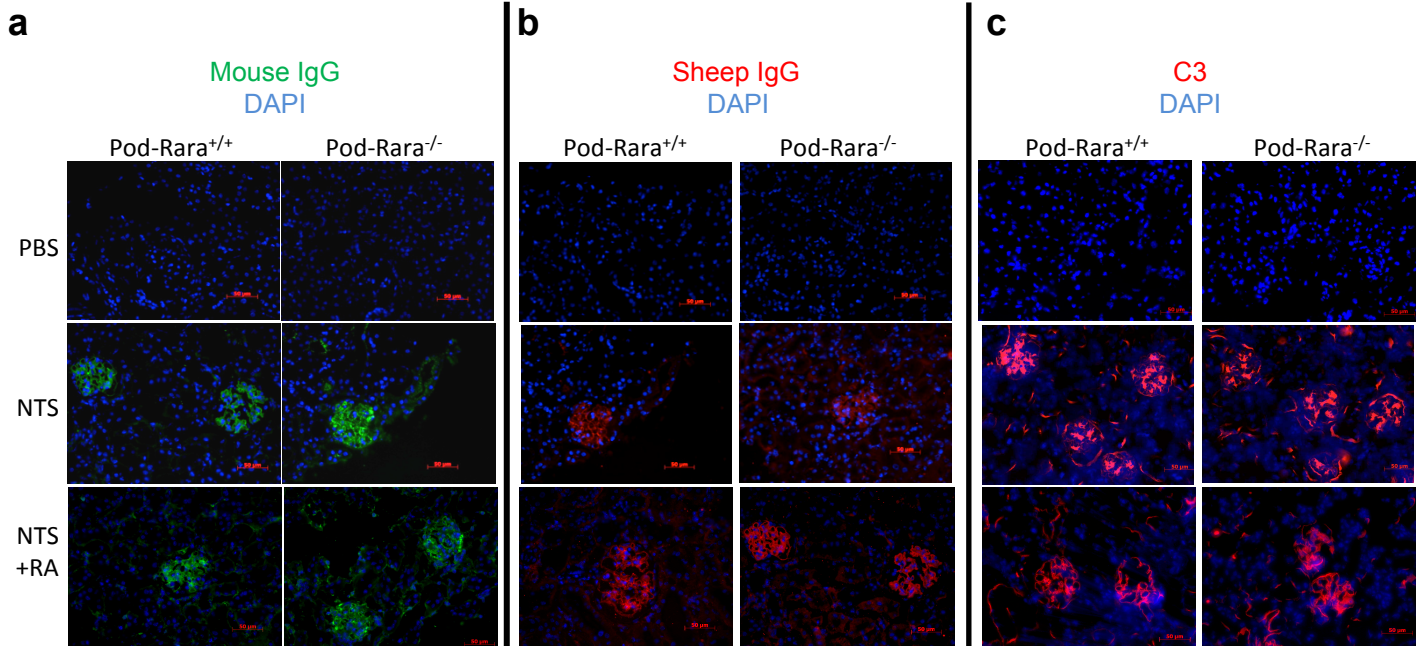


Supplementary Figure 3



Immune complex deposition in glomeruli of NTS-injected mice with or without RA treatment. Immunofluorescence was performed in mouse kidney sections for mouse IgG (a), sheep IgG (b), and mouse C3 (c). Linear pattern of IgG and C3 staining is observed in the glomeruli of NTS-injected animals but not in PBS-injected controls. The pattern and intensity of staining is similar in both Pod-Rara^{+/+} and Pod-Rara^{-/-} mice.