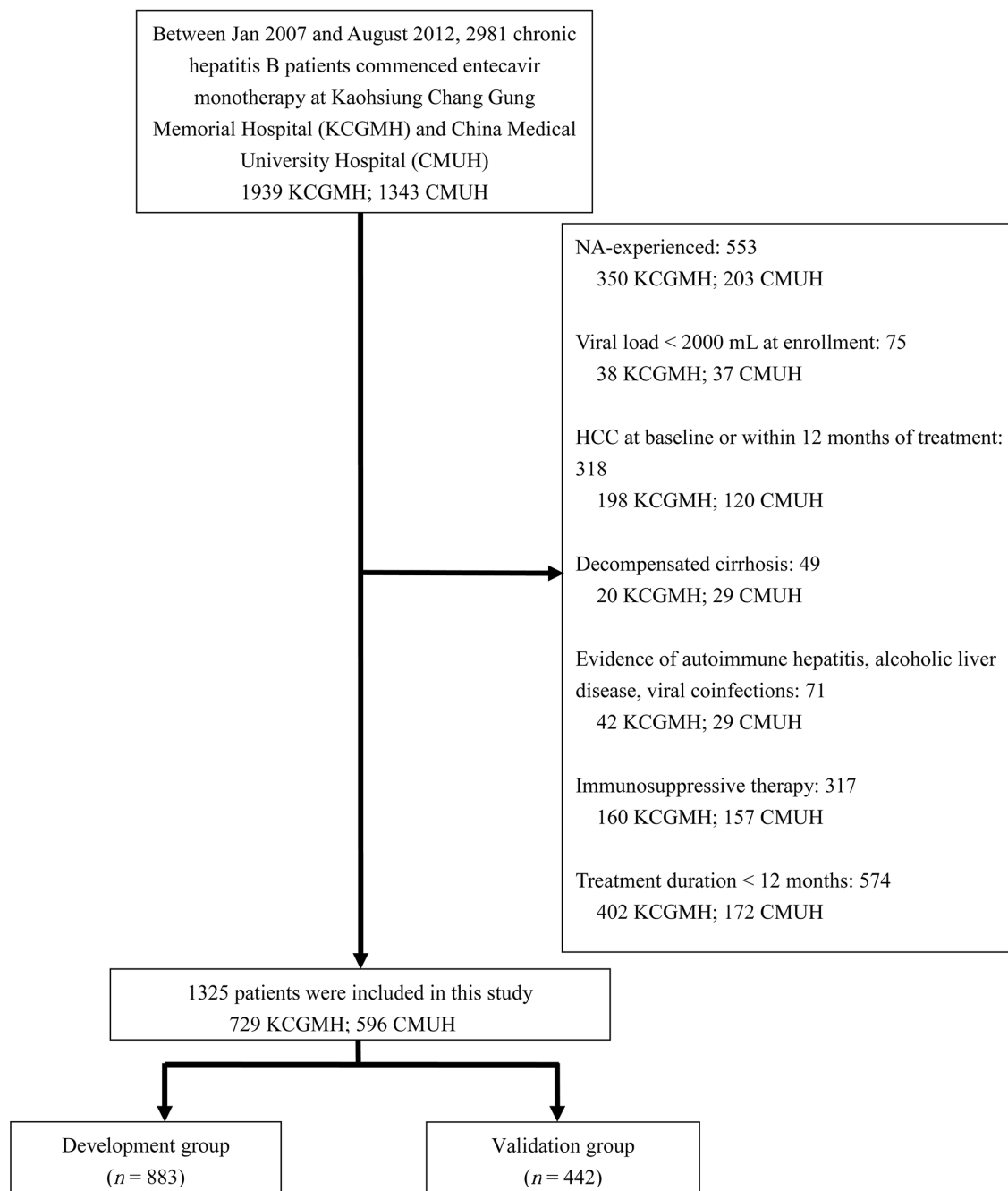
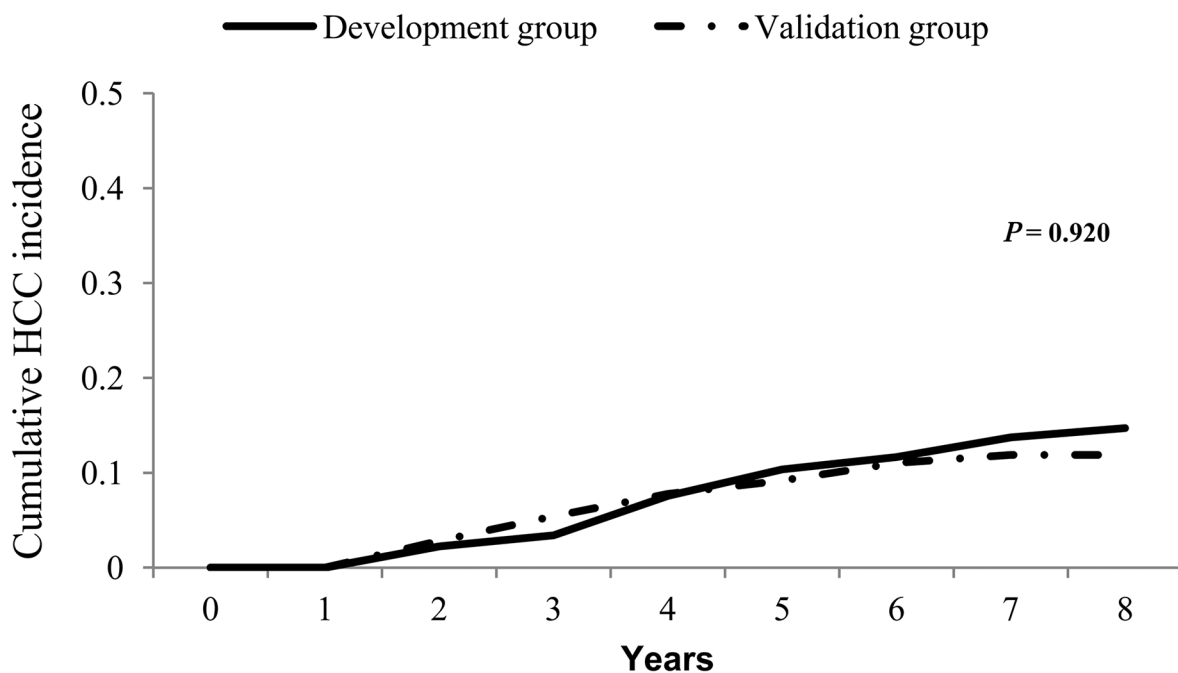


# Prediction model of hepatocellular carcinoma risk in Asian patients with chronic hepatitis B treated with entecavir

## SUPPLEMENTARY MATERIALS



**Supplementary Figure 1: Flow chart of patients enrolled in this study.** HCC, hepatocellular carcinoma; NA, nucleos(t)ide analog.



**Number at risk**

Development group	883	883	783	557	406	293	193	116	45
Validation group	442	442	399	272	212	166	108	60	23

**Supplementary Figure 2: Cumulative incidence rates of HCC in the development and validation groups of CHB-naïve patients treated with entecavir.** HCC, hepatocellular carcinoma; CHB, chronic hepatitis B.

**Supplementary Table 1: Clinical characteristics of the development and validation groups.**

See Supplementary File 1

**Supplementary Table 2: Univariate and multivariate analyses of baseline factors associated with hepatocellular carcinoma in the development group ( $n = 883$ )**

Variables	Univariate analysis		Multivariate analysis	
	Hazard ratio (95% CI)	<i>P</i> value	Hazard ratio (95% CI)	<i>P</i> value
Age (year)	1.058 (1.036–1.080)	< 0.001	1.048 (1.026–1.069)	< 0.0001
Sex, male vs female	1.015 (0.593–1.737)	0.958		
HBV genotype, C vs B	1.472 (0.919–2.357)	0.105		
HBeAg, yes or no	0.704 (0.412–1.205)	0.201		
HBV DNA, per log <sub>10</sub> IU/mL	0.827 (0.704–0.971)	0.021		
Diabetes mellitus, yes vs no	2.640 (1.510–4.615)	0.001		
Family history of HCC, yes vs no	1.479 (0.846–2.586)	0.170		
Platelet, <90 vs ≥90 × 10 <sup>3</sup> /μL	3.636 (2.193–6.027)	< 0.001	2.716 (1.625–4.540)	0.0001
AST, per U/L	0.999 (0.997–1.000)	0.068		
ALT, per U/L	0.998 (0.996–0.999)	0.006		
AAR	2.590(1.825–3.677)	< 0.0001		
Total bilirubin, per mg/dL	0.947 (0.827–1.085)	0.435		
Albumin, per g/L	0.386 (0.260–0.573)	< 0.001		
INR, per ratio	2.088 (1.001–4.355)	0.050		
AFP at baseline, ≥5 vs <5 ng/mL	2.968 (1.625–5.423)	< 0.001	2.169 (1.171–4.018)	0.0139
HBsAg at baseline, per log <sub>10</sub> IU/mL	0.793 (0.595–1.056)	0.112		

Abbreviations: AFP, alpha-fetoprotein; ALT, alanine aminotransferase; CI, confidence interval; AAR, AST/ALT ratio; HBV, hepatitis B virus; HBeAg, hepatitis B e antigen; HBsAg, hepatitis B surface antigen; HCC, hepatocellular carcinoma; INR, international normalized ratio; VR, virological response.

**Supplementary Table 3: AUROC for predicting hepatocellular carcinoma within the initial 5 years of entecavir treatment by using different parameters in the development group ( $n = 883$ )**

Factors	AUROC (95% CI)
Age at baseline	0.695 (0.631–0.759)*
Age at 12 months	0.695 (0.631–0.759)*
Platelet at baseline	0.773 (0.714–0.831)**
Platelet at 12 months	0.832 (0.782–0.882)**
AFP at baseline	0.365 (0.306–0.425)**
AFP at 12 months	0.776 (0.716–0.836)**
APA-B at baseline (logistic regression)	0.807 (0.755–0.859)*
APA-B at 12 months (logistic regression)	0.863 (0.819–0.908)*

\*:  $P < 0.05$  for the AFA-B score at 12 months vs any other parameter.

†:  $P < 0.05$  for platelet at baseline vs platelet at 12 months of treatment.

‡:  $P < 0.05$  for AFP at baseline vs AFP at 12 months of treatment.

Abbreviations: AFP, alpha-fetoprotein; AUROC, area under the receiver operating characteristic curve; CI, confidence interval.

**Supplementary Table 4: Accuracy of predicting hepatocellular carcinoma within the initial 5 years of entecavir treatment in the development and validation groups by using the cutoff value of  $\geq 6$  in the APA-B score**

	APA-B score $\geq 6$	
	Development ( $n = 883$ )	Validation ( $n = 442$ )
Sensitivity	78.3%	90.3%
Specificity	80.0%	79.1%
Positive predictive value	22.2%	24.6%
Negative predictive value	98.1%	99.1%

**Supplementary Table 5:  $P$  values of AUROC and C-statistic comparisons between the APA-B score and each risk score**

	APA-B vs CU-HCC	APA-B vs REACH-B I	APA-B vs REACH-B II	APA-B vs PAGE-B
2 years	0.161	0.002	0.002	0.071
3 years	0.066	< 0.001	< 0.001	0.013
4 years	0.003	< 0.001	< 0.001	< 0.001
5 years	0.018	< 0.001	< 0.001	0.001
C-statistic	< 0.001	< 0.001	< 0.001	< 0.001

Abbreviations: AUROC, area under the receiver operating characteristic curve.