

Transcriptome analysis of the salivary glands of the grain aphid, *Sitobion avenae*

Yong Zhang^{1,2}, Jia Fan¹, Jingrui Sun¹, Frédéric Francis^{2*}, Julian Chen^{1*}

¹ State Key Laboratory of Plant Diseases and Insect Pests, Institute of Plant Protection, Chinese Academy of Agricultural Sciences, Beijing, 100193, PR China

² Functional and Evolutionary Entomology, Gembloux Agro-Bio Tech, University of Liège, Gembloux, B-5030, Belgium

Corresponding authors: Julian Chen, Tel: +86 10 62813685; E-mail: jlchen@ippcaas.cn ; Frédéric Francis, Tel.: +32 81 622283; E-mail: Frederic.Francis@ulg.ac.be.

Supplementary Figures

Supplementary Figure 1. The enriched GO and KOG molecular functions for all salivary gland-expressed genes.

Supplementary Figure 2. The KEGG pathway for all salivary gland-expressed genes.

Supplementary Figure 3. The full-length gels for each unigenes presented in Figure 5a.

Supplementary Figure 4. The full-length gels for each unigenes presented in Figure 6a.

Supplementary Tables

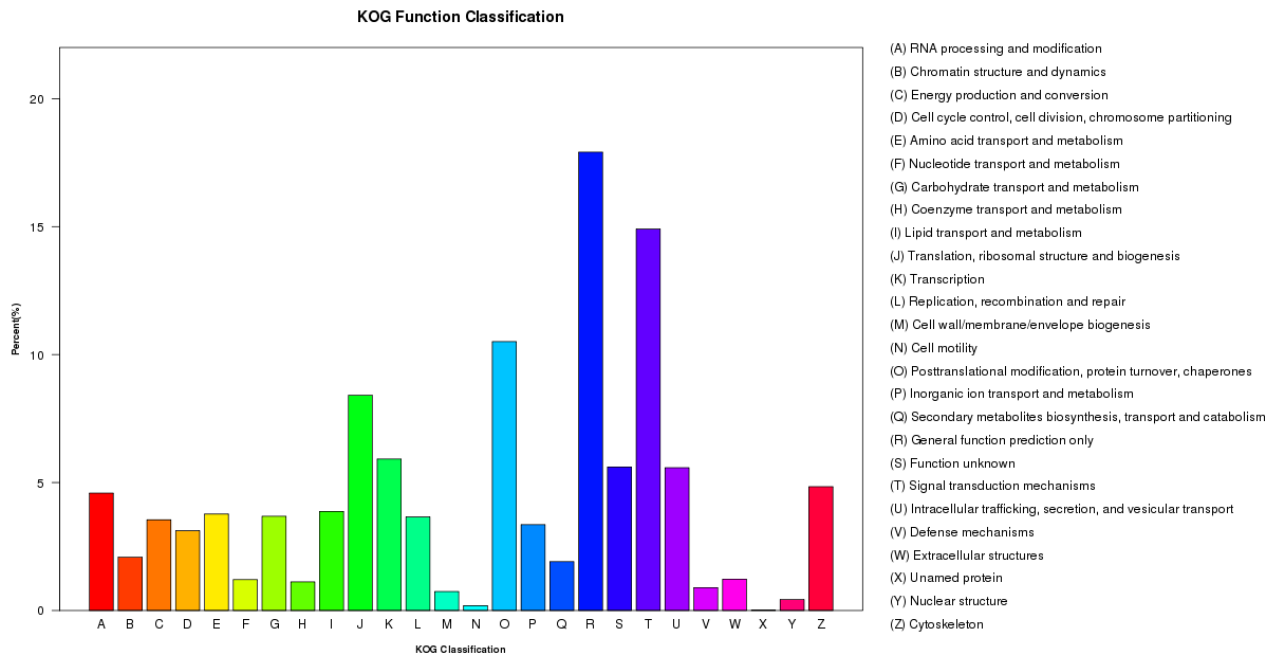
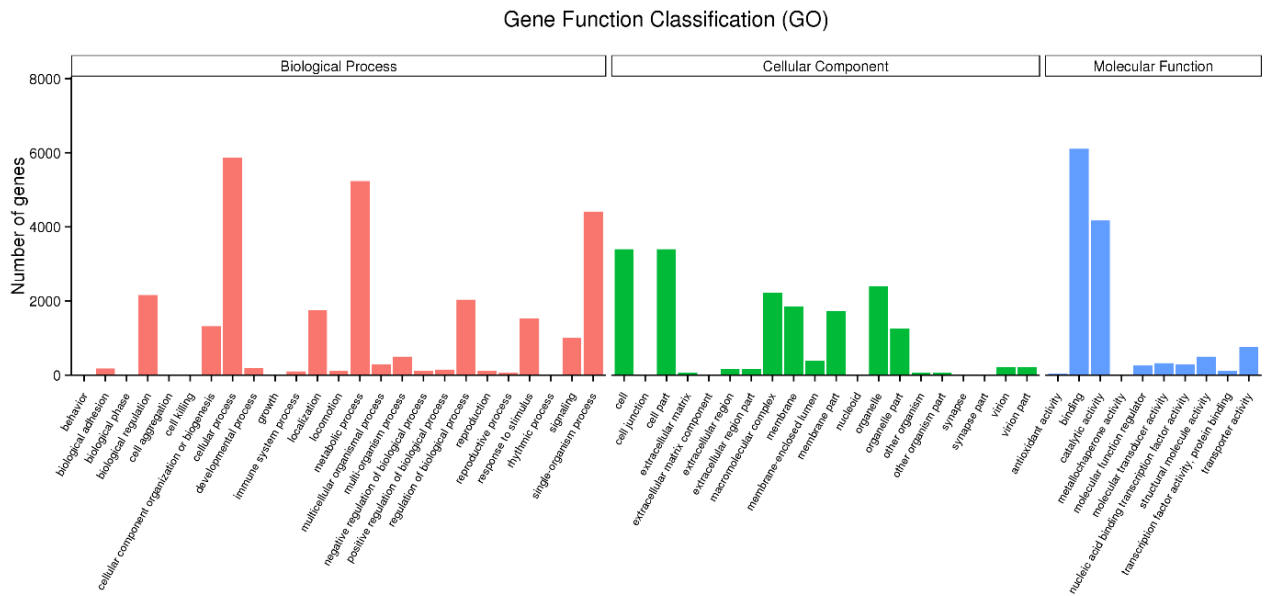
Supplementary Table 1. List of all unigenes in the salivary glands of *S.avenae*.

Supplementary Table 2. List of genes with a putative signal peptide.

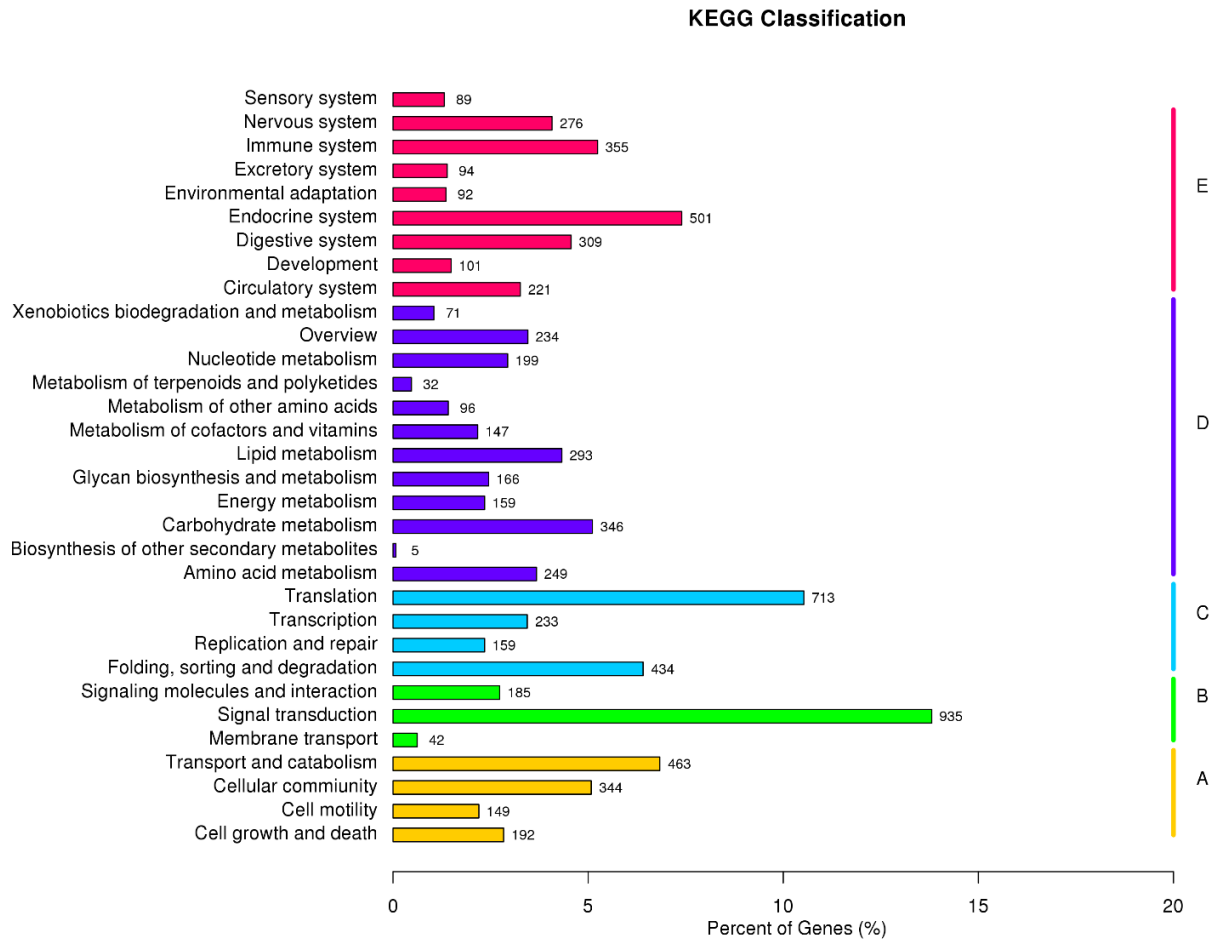
Supplementary Table 3. List of top 15 highly expressed genes and 9 interested genes in salivary glands of *S.avenae*.

Supplementary Table 4 List of all primers used in RT-PCR and qRT-PCR

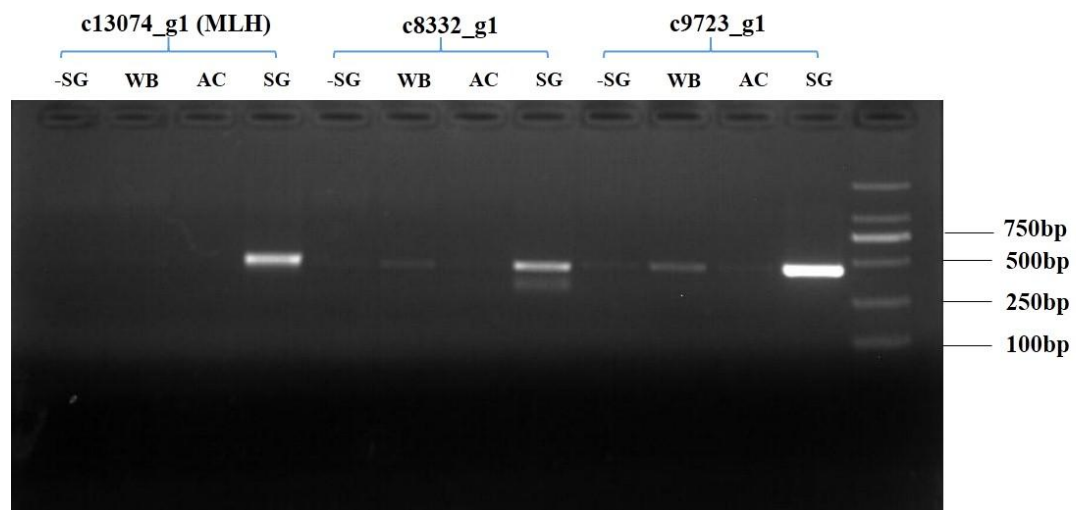
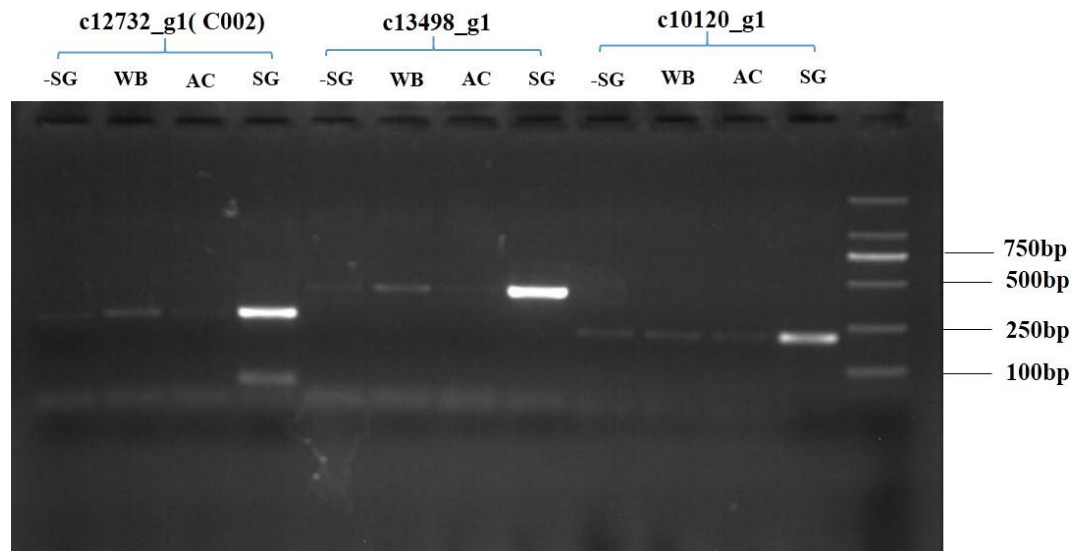
Supplementary Figure 1. The enriched GO and KOG molecular functions for all salivary gland-expressed genes.

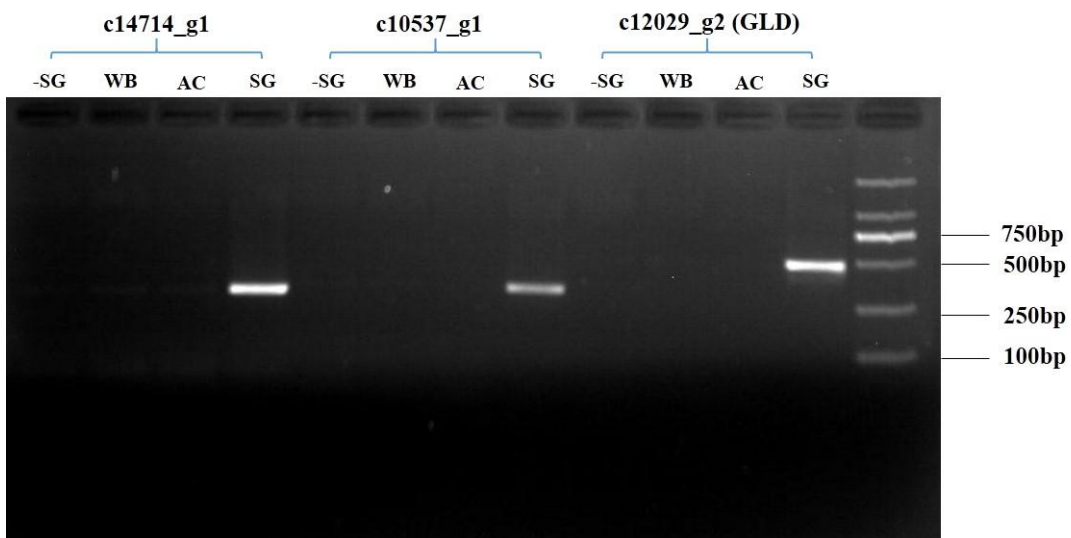
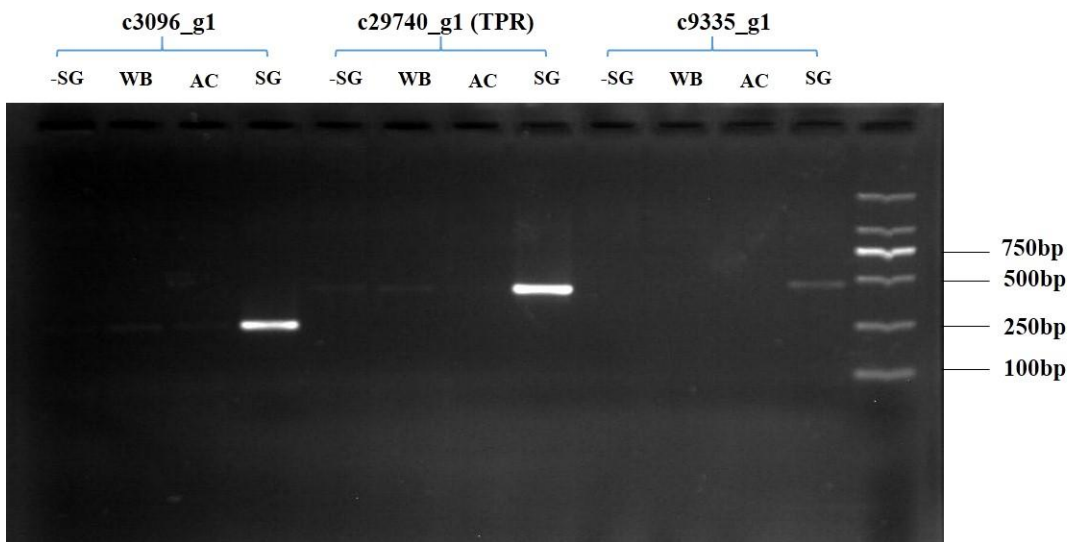
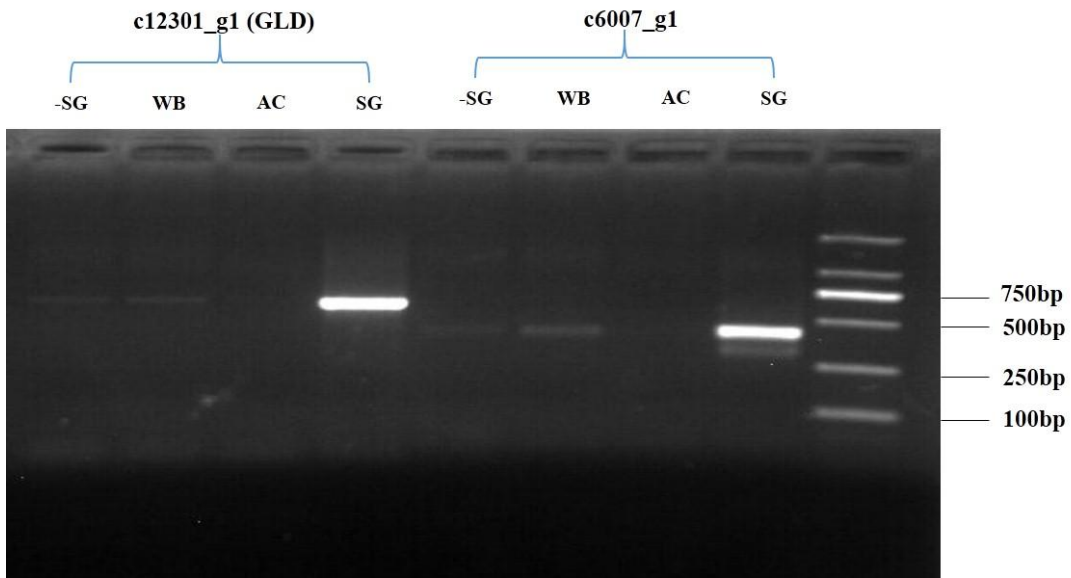


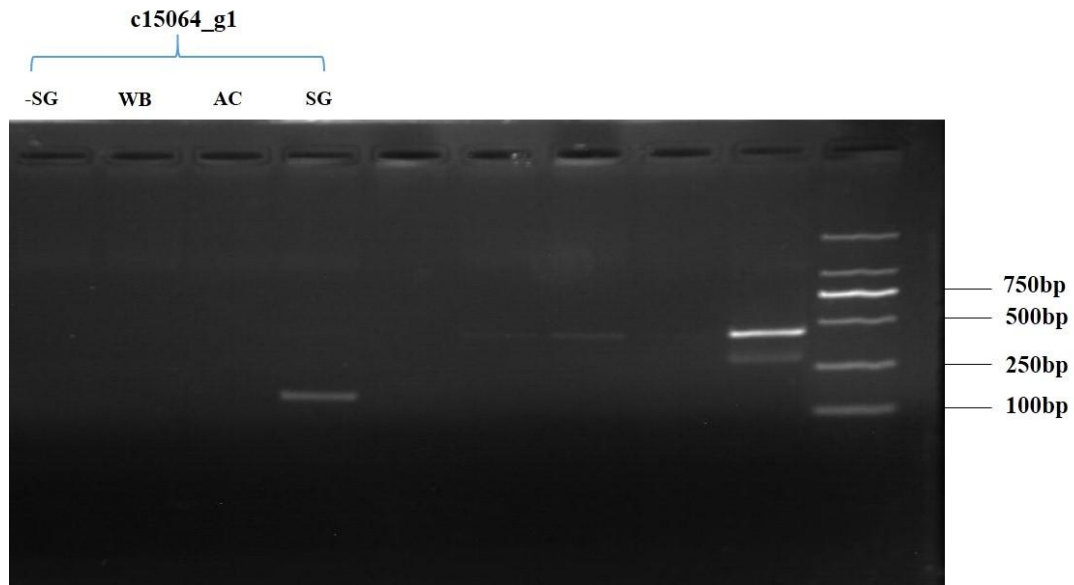
Supplementary Figure 2. The KEGG pathway for all salivary gland-expressed genes. A: Cellular Processes; B: Environmental Information Processing; C: Genetic Information Processing; D: Metabolism; E: Organismal Systems.



Supplementary Figure 3. The full-length gels for each unigenes presented in Figure 5a.







Supplementary Figure 4. The full-length gels for each unigenes presented in Figure 6a.

