

European Journal of Immunology

Supporting Information
for

DOI 10.1002/eji.201747063

Francesco Siracusa, Özen Sercan Alp, Patrick Maschmeyer, Mairi McGrath,
Mir-Farzin Mashreghi, Shintaro Hojyo, Hyun-Dong Chang, Koji Tokoyoda
and Andreas Radbruch

**Maintenance of CD8⁺ memory T lymphocytes
in the spleen but not in the bone marrow is dependent on proliferation**

Supporting information

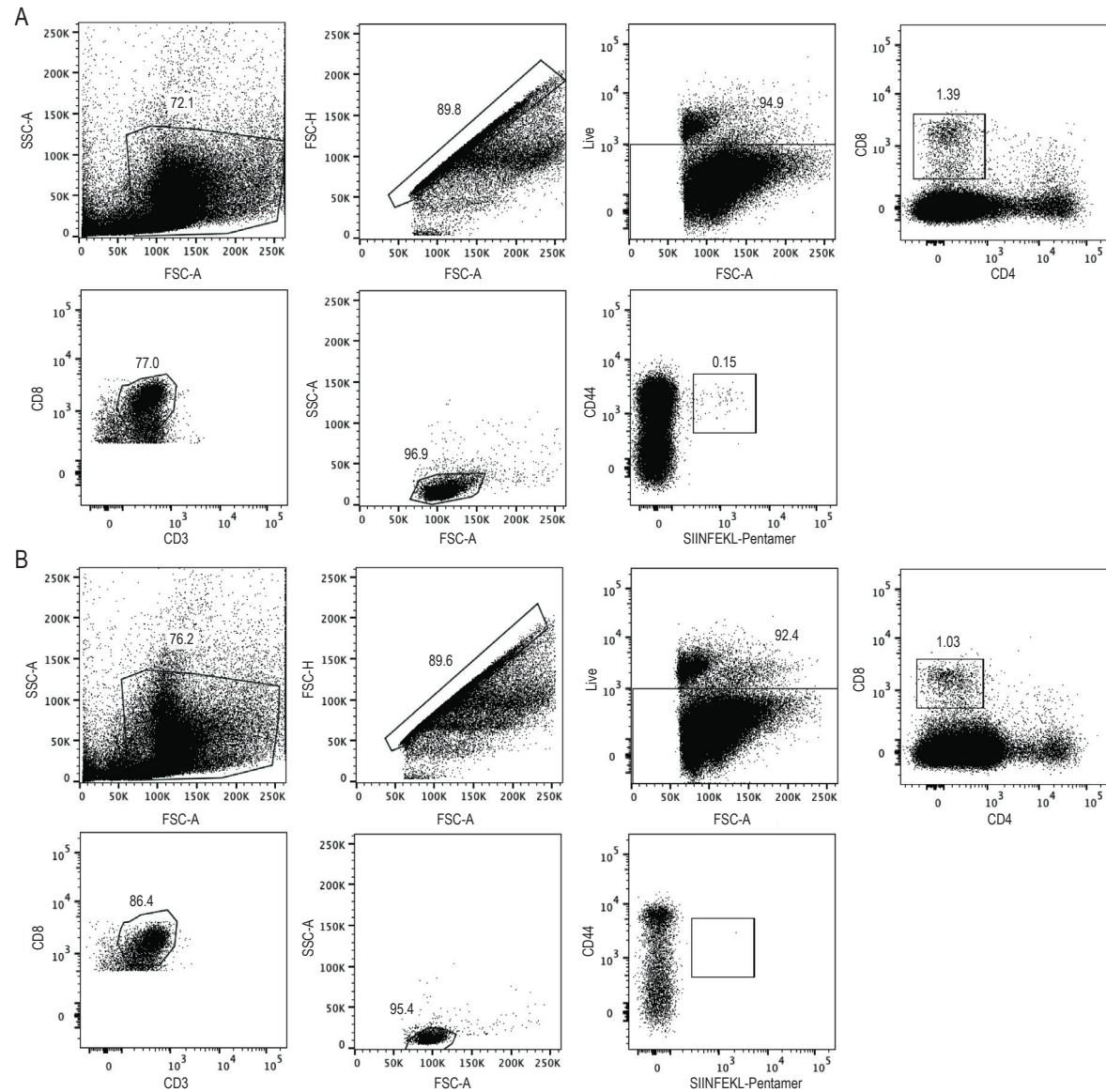


Fig. 1: Gating strategy for the detection of SIINFEKL-specific CD8⁺ memory T cells. (A) Representative dot plots showing full gating strategy used for the detection of SIINFEKL-specific CD8⁺ memory T cells in the bone marrow of ovalbumin-immunized mice. (B) Representative dot plots showing full gating strategy used for the detection of background signal coming from SIINFEKL-pentamer in the bone marrow of naïve mice. Absolute cell numbers of SIINFEKL-specific CD8⁺ memory T cells were calculated as $\text{SIINFEKL-specific CD8}^+ \text{ memory T cells}_{(\text{OVA mice})} - \text{SIINFEKL-specific CD8}^+ \text{ memory T cells}_{(\text{naïve mice})}$.