

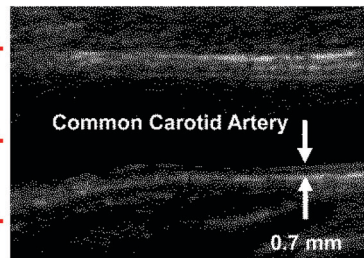
Carotid Intima-Media Thickness (CIMT)

Traditional Risk Factors

- Age +
- Systolic Blood Pressure +
- Hemoglobin A1c +

Whole-body Cholesterol Metabolism

- Fecal Endogenous Cholesterol Excretion
- + Percent Cholesterol Absorption



Factors associated with CIMT:

+ : Positive association

- : Negative association