

SUPPLEMENTAL FIGURES

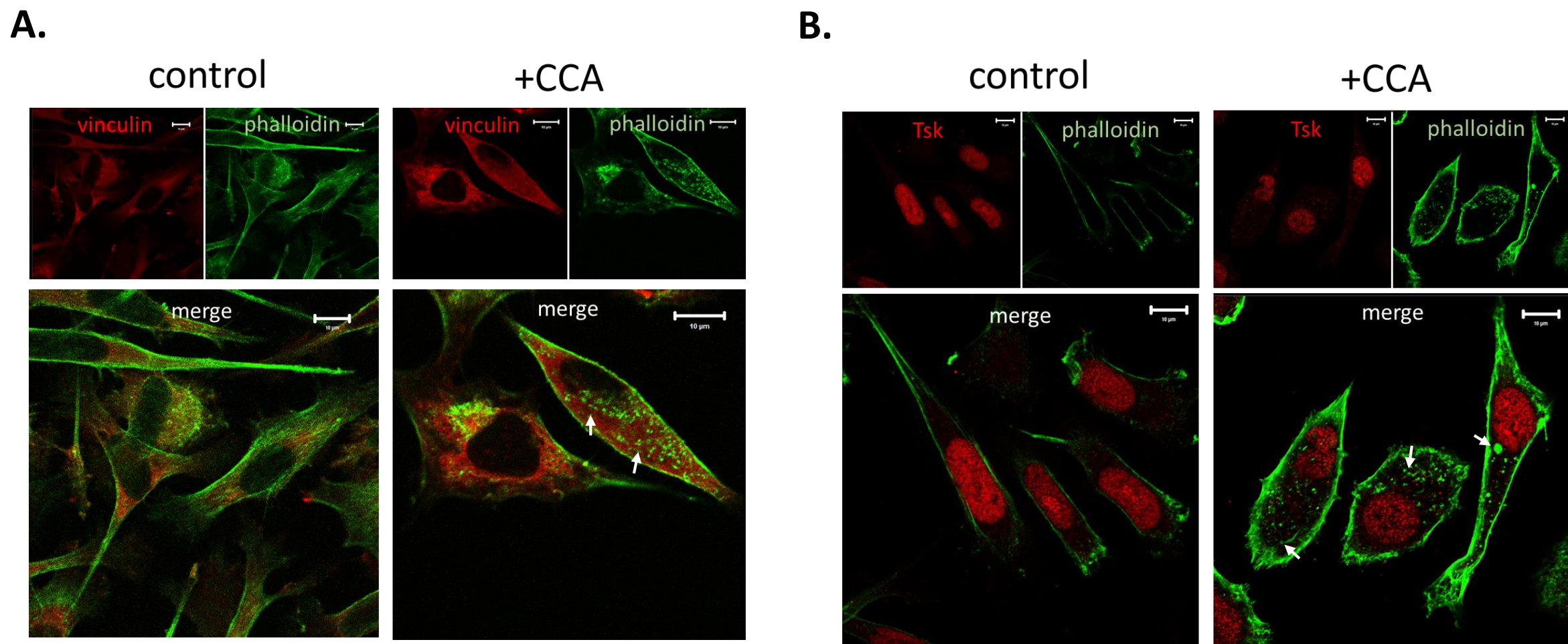


FIGURE S1

**FIGURE S1. CCA-induced F-actin rings do not co-localize with vinculin or Tsk5.** PC-3 cells were incubated with vehicle control media (DMSO 0.005%) or V-ATPase inhibitor (+ CCA) for 48 hours and then fixed and co-immunostained with antibodies against the invadosome markers vinculin (**A**, red) or Tsk5 (**B**, red) and phalloidin (F- actin marker, green). White arrows = F-actin rings. Scale bars = 10 μm.

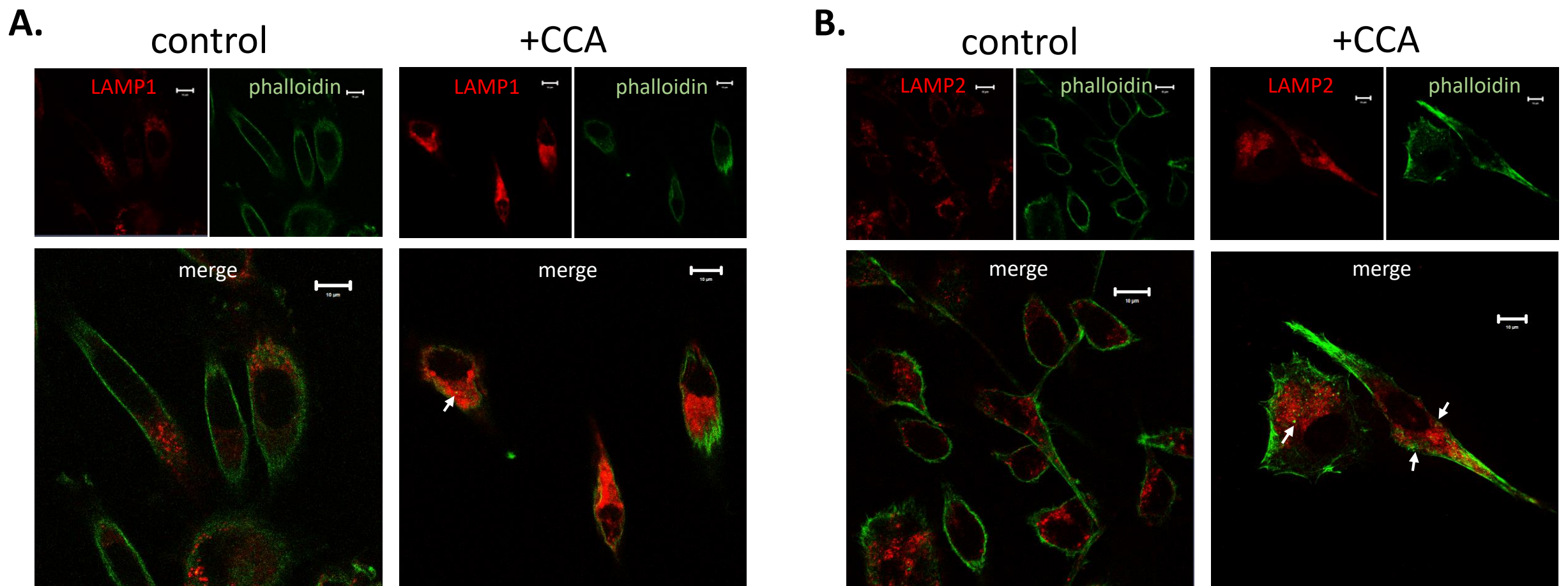


FIGURE S2

**FIGURE S2. CCA-induced F-actin rings do not co-localize with LAMP1 and LAMP2.** PC-3 cells were incubated with vehicle control media (DMSO 0.005%) or V-ATPase inhibitor (+ CCA) for 48 hours and then fixed and co-immunostained with antibodies against the lysosome markers LAMP1 (**A**, red) or LAMP2 (**B**, red) and phalloidin (F-actin marker, green). White arrows = F-actin rings. Scale bars = 10  $\mu$ m.