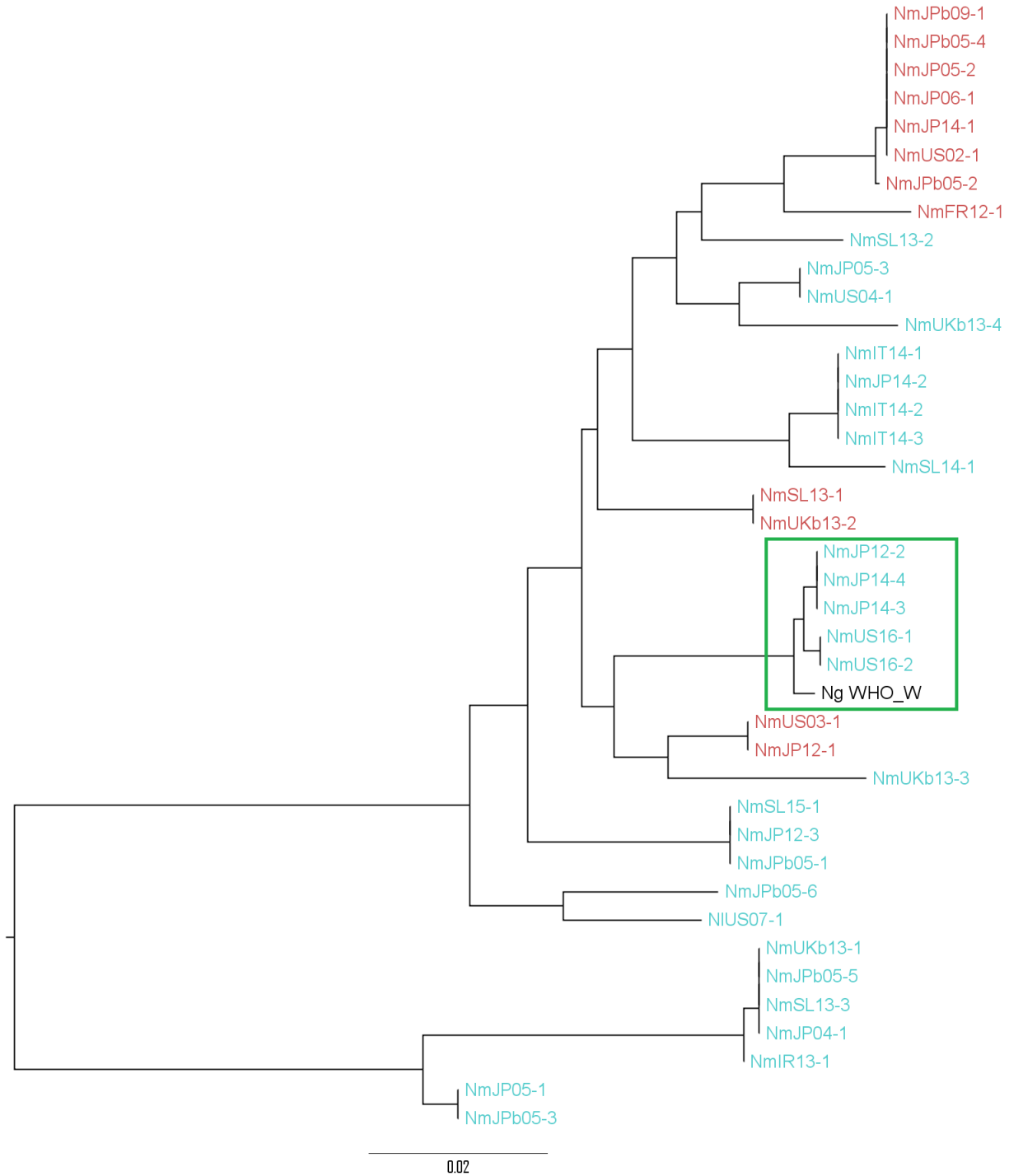


**Supplemental Figure S1: PhyloPhIAn phylogeny of nongonococcal urethritis isolates and selected reference isolates from Bennett et al. (2012).** Reference isolates denoted in blue; nongonococcal urethritis isolates denoted in red.



**Supplemental Figure S2: Neighbor-joining nucleotide phylogeny of *aniA*.**

Alleles of *aniA* were aligned using MAFFT. Isolates with frameshifted *aniA* are denoted in red; isolates with full-length *aniA* are denoted in blue. The clade outlined in green contains *aniA* of putative gonococcal origin. Ng WHO\_W is a reference *aniA* allele from a gonococcal strain.

## Supplementary Table 1: Accession Numbers

<b>Sample</b>	<b>Accession Number</b>
NIUS07-1	NGBO00000000
NmJP04-1	NGBN00000000
NmJP05-1	NGBM00000000
NmJP05-2	NGBL00000000
NmJP05-3	NGBK00000000
NmJP06-1	NGBJ00000000
NmJP12-1	NGBI00000000
NmJP12-2	NGBH00000000
NmJP12-3	NGBG00000000
NmJP14-1	NGBF00000000
NmJP14-2	NGBE00000000
NmJP14-3	NGBD00000000
NmJP14-4	NGBC00000000
NmJPb05-1	NGBB00000000
NmJPb05-2	NGBA00000000
NmJPb05-3	NGAZ00000000
NmJPb05-4	NGAY00000000
NmJPb05-5	NGAX00000000
NmJPb05-6	NGAW00000000
NmJPb09-1	NGAV00000000
NmSL13-1	NGAU00000000
NmSL13-2	NGAT00000000
NmSL13-3	NGAS00000000
NmSL14-1	NGAR00000000
NmSL15-1	NGAQ00000000
NmUS02-1	NGAP00000000
NmUS03-1	NGAO00000000
NmUS03-2	NGAN00000000
NmUS04-1	NGAM00000000