

**Regulation of human and mouse telomerase genes by genomic contexts
and transcription factors during embryonic stem cell differentiation**

De Cheng^{1,*}, Shuwen Wang¹, Wenwen Jia², Yuanjun Zhao³, Fan Zhang¹, Jiahong,
Kang², and Jiyue Zhu^{1,*}

Supplementary Information

Table S1. Southern blot probes

Probes	Plasmids	Restriction fragments	Fragment size
Fluc	pYF10	Sph I-Xba I	989 bp
Rluc	pYF2-hRluc	Nhe I-Xba I	945 bp
Lox511 junction	pLentiPreT2	Hind III-Sac II	1199 bp
LoxP junction	pLentiPreT2	Hind III-PfIM I	953 bp

Table S2. Antibodies

Antibodies	Sources	Cat. #	Manufactures	Applications
anti-c-Myc	Rabbit polyclonal	sc-764X	Santa Cruz Biotechnology	ChIP
anti-Max	Rabbit polyclonal	sc-197	Santa Cruz Biotechnology	ChIP
anti-USF1	Rabbit polyclonal	sc-229X	Santa Cruz Biotechnology	ChIP
anti-Sp1	Rabbit polyclonal	07-645	EMD Millipore	ChIP
anti-E2F1	Rabbit polyclonal	sc-193	Santa Cruz Biotechnology	ChIP
anti-E2F3	Rabbit polyclonal	sc-878	Santa Cruz Biotechnology	ChIP
anti-H4Ac	Rabbit polyclonal	06-866	EMD Millipore	ChIP
anti-H3K4me3	Rabbit polyclonal	07-473	EMD Millipore	ChIP
anti-H3K9me3	Rabbit polyclonal	ab8898	Abcam	ChIP
anti-H3K27me3	Rabbit polyclonal	07-449	EMD Millipore	ChIP
Normal rabbit IgG	Rabbit	sc-2027	Santa Cruz Biotechnology	ChIP
Anti-Vimentin	Mouse monoclonal	MA5-11883	Thermo Fisher Scientific	IF

Fig 1B Lox511

Scanner Typhoon 9400

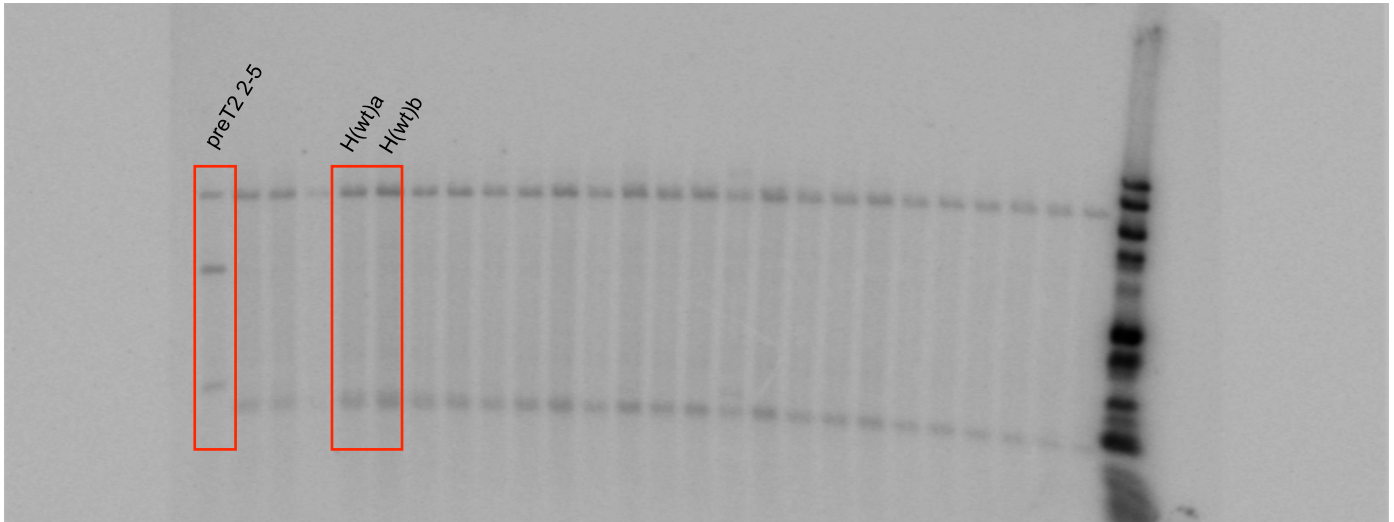


Fig 1B Fluc&Rluc

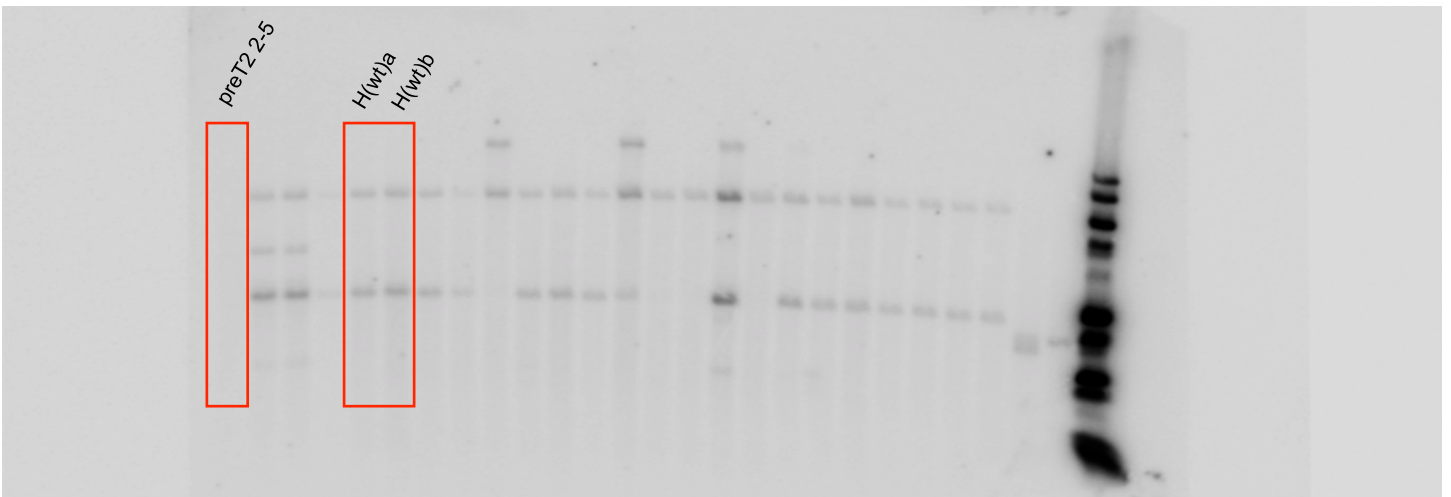


Fig 1B LoxP Probe

