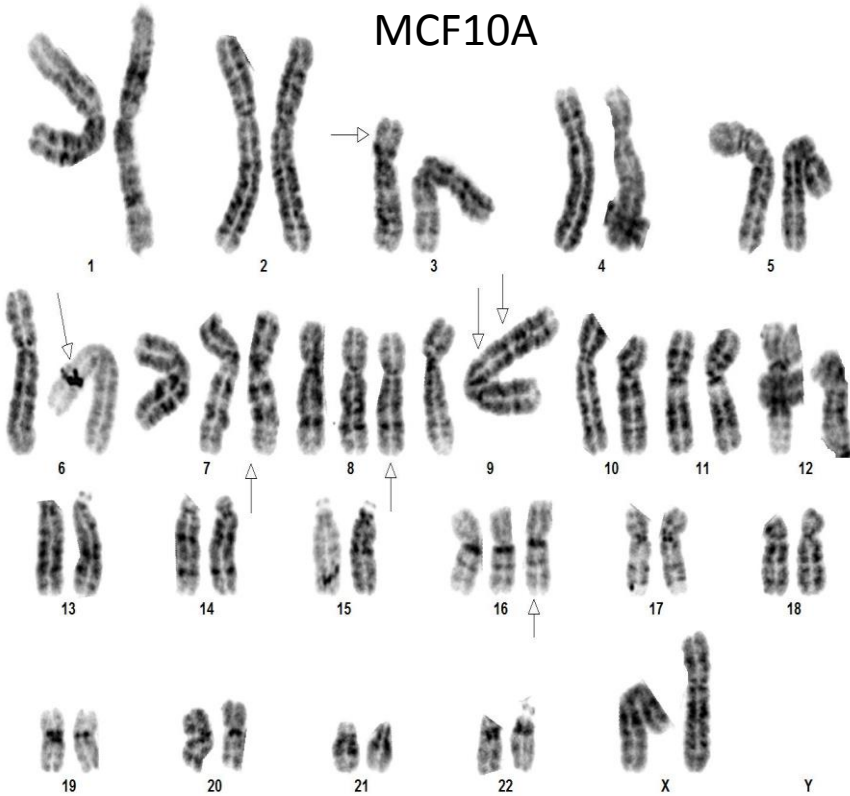


## MCF10 STR analysis

STR Locus		
	MCF10AT1	MCF10CA1a
Amelogenin	X,,	X,,
CSF1PO	10,12,	10,12,
D13S317	8,9,	8,9,
D16S539	11,12,	11,12,
D21S11	28,30,	28,30,
D5S818	10,13,	10,13,
D7S820	10,11,	10,11,
THO1	8,9.3,	8,9.3,
TPOX	9,11,	9,11,
vWA	14,15,17	14,15,17

\*MCF10A STR was performed in Hong et al. 2017.

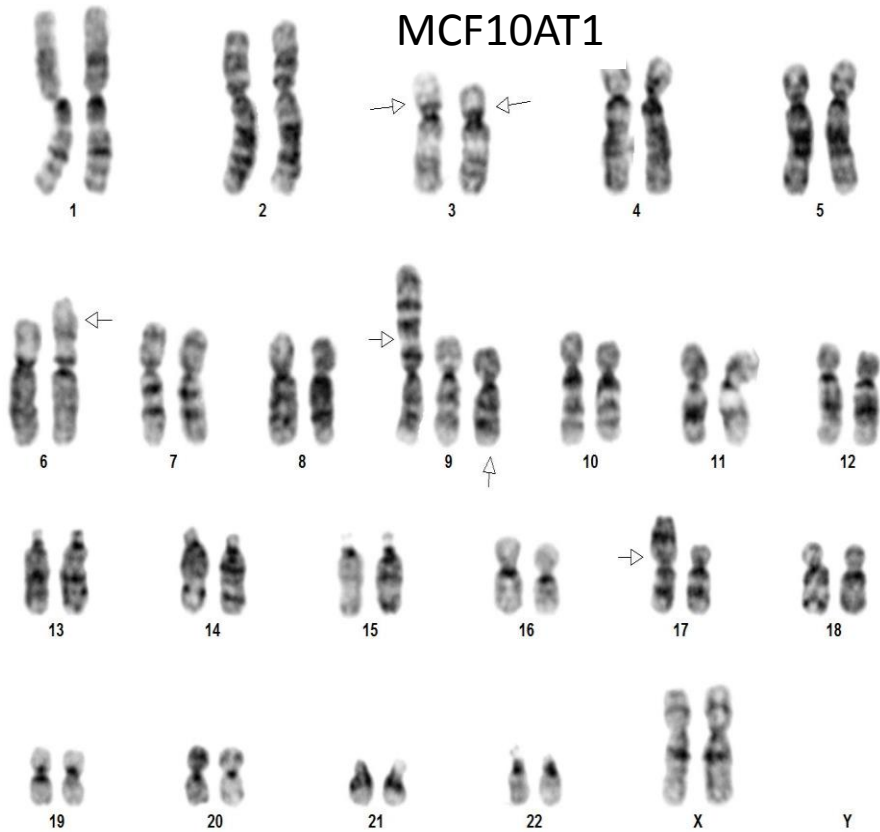
# MCF10A Karyotype



## MCF10A

% cells	translocations	aneuploidies
40	t(3;9) t(6;19) t(5;3;9)	chr8 chr16
25	t(3;9) t(6;19) t(5;3;9)	chr7 chr8 chr16
25	t(3;9) t(6;19) t(5;3;9)	chr8 chr16 chr18
10	t(3;9) t(6;19) t(5;3;9)	chr7 chr8 chr16 chr18

# MCF10AT1 Karyotype

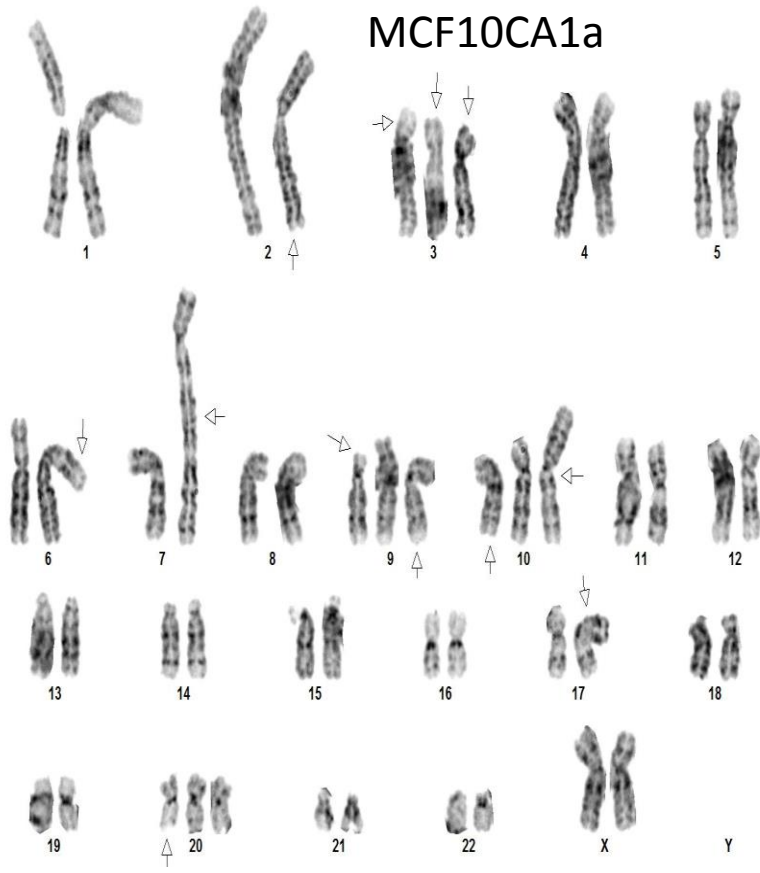


## MCF10AT1

% cells	translocations	aneuploidies
70	t(3;9) t(6;19) t(3;17)	t(5;3;9)
20	t(3;9) t(6;19) t(3;17)	t(5;3;9) chr20
10	t(3;9) t(6;19) t(3;17)	t(5;3;9) marker

# MCF10CA1a Karyotype

MCF10CA1a



MCF10CA1a

%	translocations	Aneuploidies
55	t(3;9) t(6;19) t(5;3;7)	t(3;17) t(5;9) chr20 t(2p;10q)
20	t(3;9) t(6;19) t(5;3;7)	t(3;17) t(5;9) chr20 t(2p;10q) m
10	t(3;9) t(6;19) t(5;3;7)	t(3;17) t(5;9) chr20 t(2p;10q) chr18
5	t(3;9) t(6;19) t(5;3;7)	t(3;17) t(5;9) chr20 t(2p;10q) m + 18