

Supplemental Materials

Ectopic expression of Snail and Twist in Ph+ leukemia cells upregulate CD44 expression and alter their differentiation potential

By Noa Kidan et al., 2017

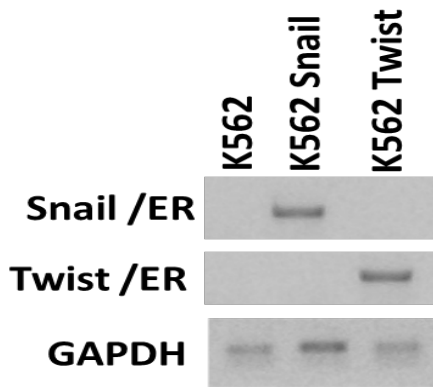


Figure S1: validation of K562 cells harboring Snail and Twist by RT-PCR using Snail (Table S1) and ER primers (ER reverse 5`-GTC CAG GAG CAA GTT AGG AG-3') for monitoring Snail-ER and Twist (Table S1) and ER primers for monitoring expressing of Twist-ER hybrid transcript

Table S1: Primers used in this study:

Gene	DNA Sequence	Annealing Temperature (°C)
CD44	Forward 5'-AACCGCGAGAATCAAAGCCAAGGC-3' Reverse 5'-GATCCACCCCAATTCCATCTGTGC-3'	58
β-actin	Forward 5'-GCC CTG GACTTCGAGCAAGA-3' Reverse 5'-TGC CAG GGTACATGGTGG TG-3'	60
γ-globin	Forward 5'- CAT GGCAAGAAG GTGCTG AC -3' Reverse 5'- GCTCTGCATCATGGG CAG TG -3'	60
β-catenin	Forward 5'-TGGAACATGAGATGGGTGGC-3' Reverse 5'-TGCAAGTTCAGACAATACAGCTAA-3'	58
CXCR4	Forward 5' AGGGGATCAGTATATACACTTCAGA-3' Reverse 5'-AGGTGCAGCCTGTACTIONTGTGTC-3'	58

GAPDH	Forward 5'-GAGTCAACGGATTTGGTCGT-3' Reverse 5'-GGTGCCATGGAATTTGCCAT-3'	60
Slug	Forward 5'-TTAGAACTCACACGGGGGAGAA-3' Reverse 5'-GCTACACAGCAGCCAGATTC-3'	58
Snail	Forward 5'-GCACATCCGAAGCCACACGC-3' Reverse 5'-CTTGACATCTGAGTGGGTCTGG-3'	60
Twist1	Forward 5'-CTGGCGGCCAGGTACATCGAC-3' Reverse 5'-GGACGCGGACATGGACCAGGCC-3'	60
Zeb1	Forward 5'-GTGTAAGCGCAGAAAGCAGGC-3' Reverse 5'-CTTTCCTGTGTCATCCTCCAG-3'	60

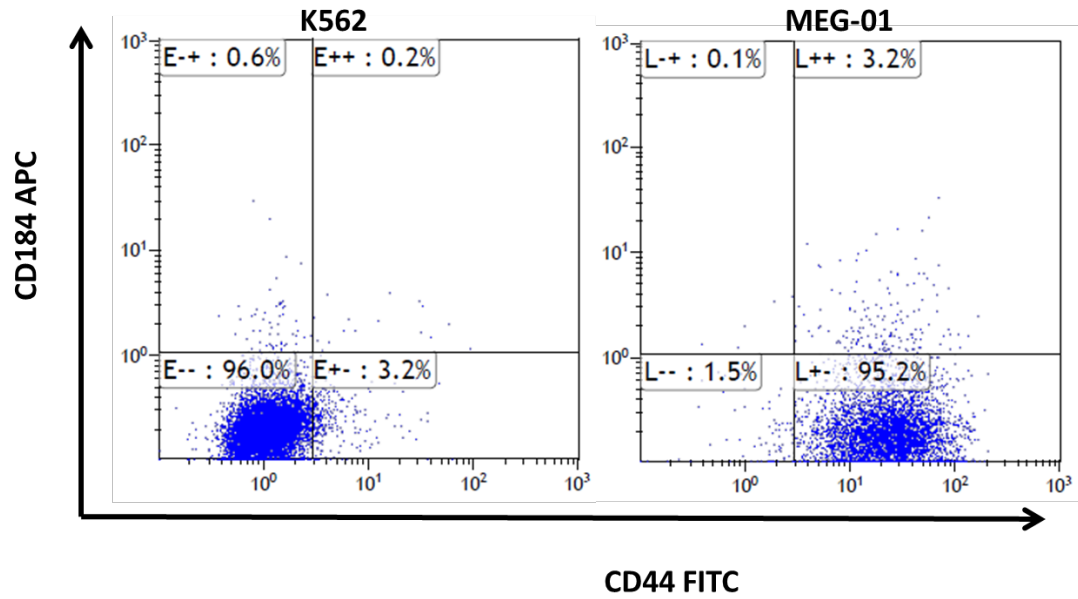


Figure S2: Expression levels of CD44 and CD184 (CXCR4) surface proteins in K562 and MEG-01 cells. FACS was utilized to monitor levels of CD44 and CD184 in K562 and MEG-01 cells.

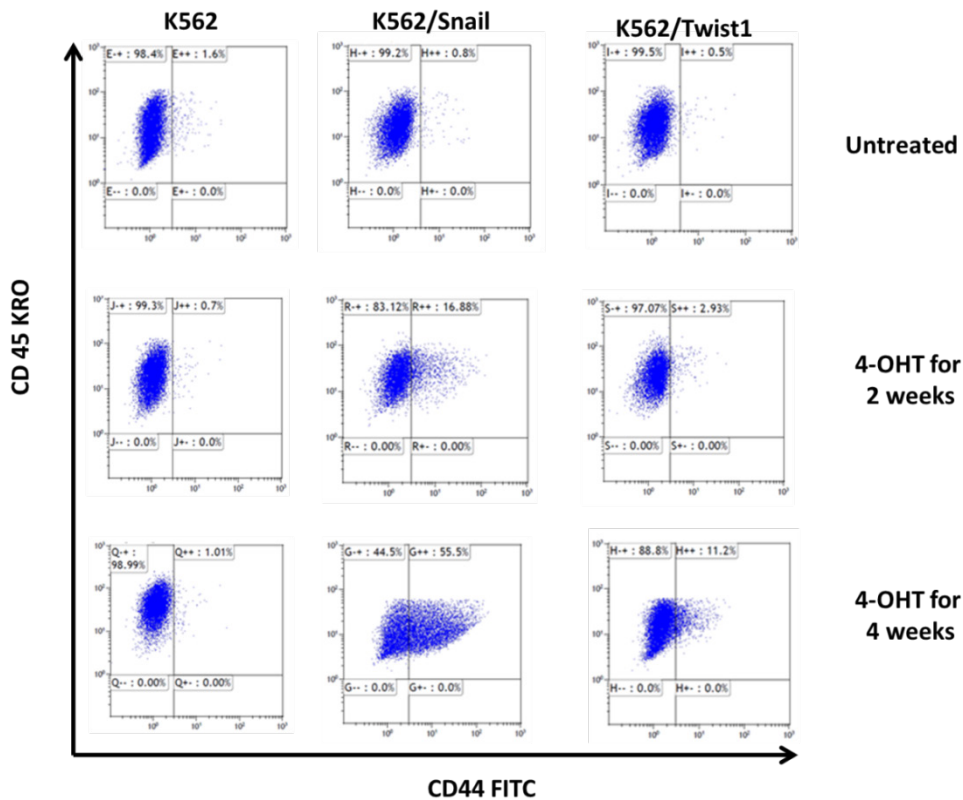


Figure S3: Expression of CD44 in K562 cells treated with 4-OHT. FACS analysis of CD44 expression in K562 cells treated with 4-OHT for 2 and 4 weeks.

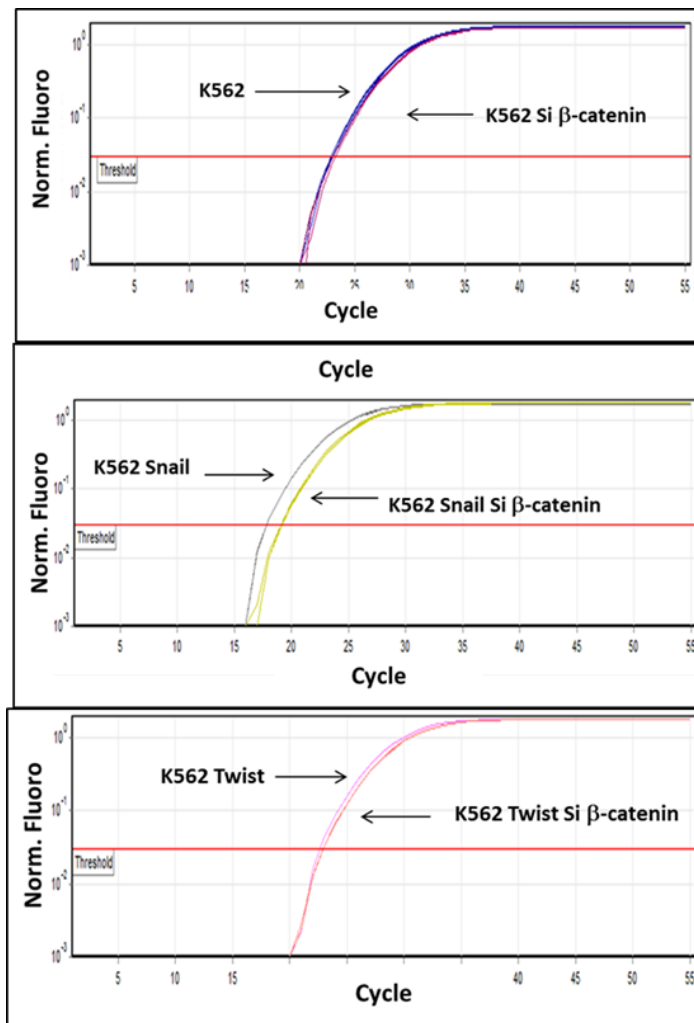


Figure S4: Effect of β -catenin on Snail-dependent expression of CD44: Real-time PCR monitoring levels of CD44 in WT K562 cells or silenced β -catenin.