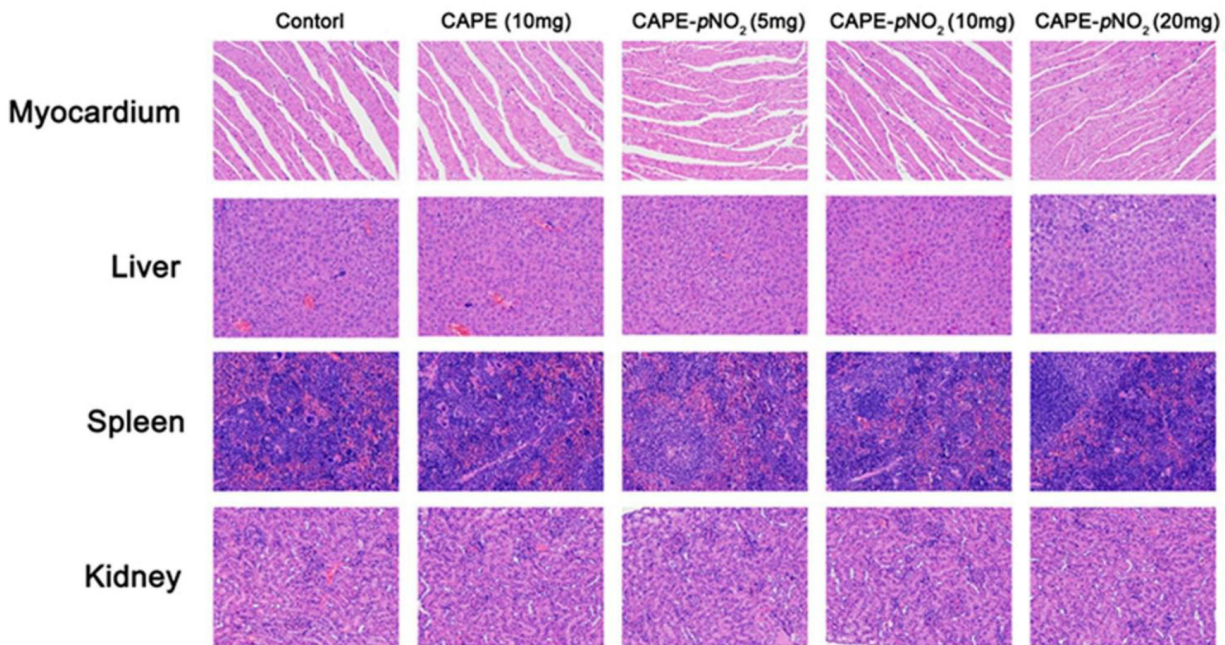
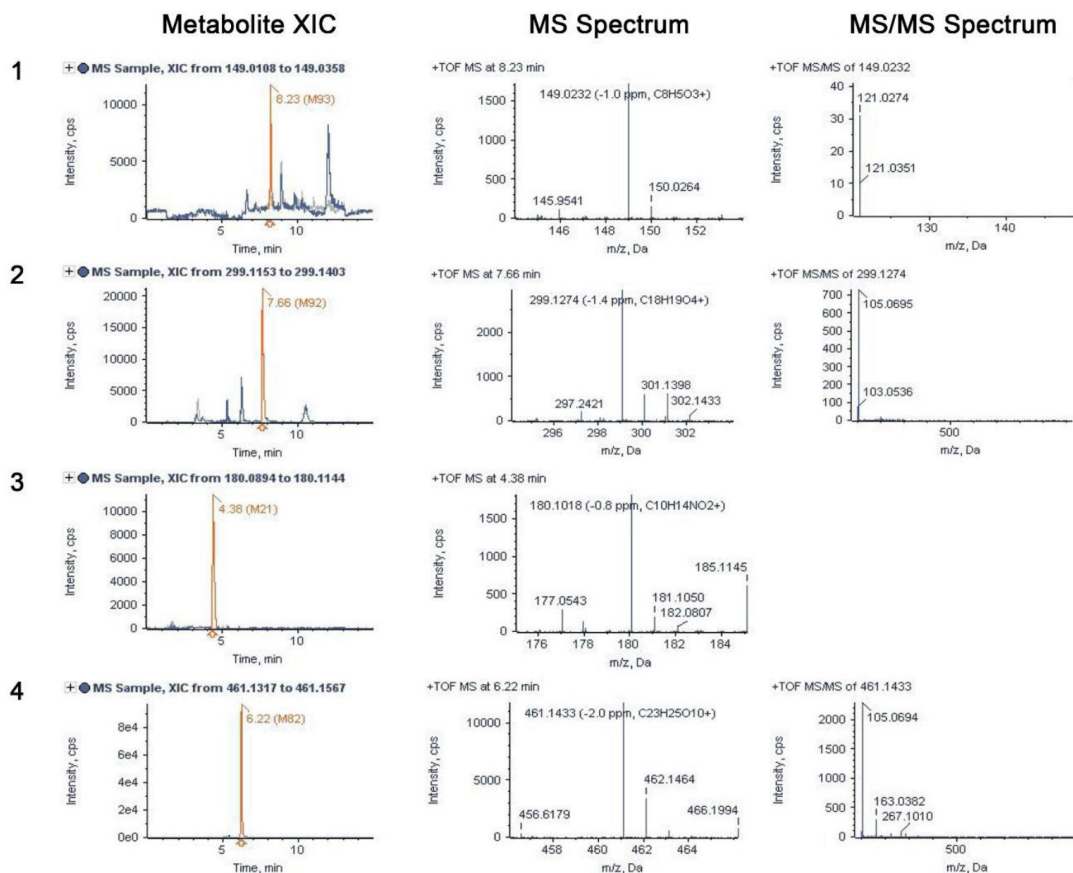


## Inhibited effects of CAPE- $pNO_2$ on cervical carcinoma *in vivo* and *in vitro* and its detected metabolites

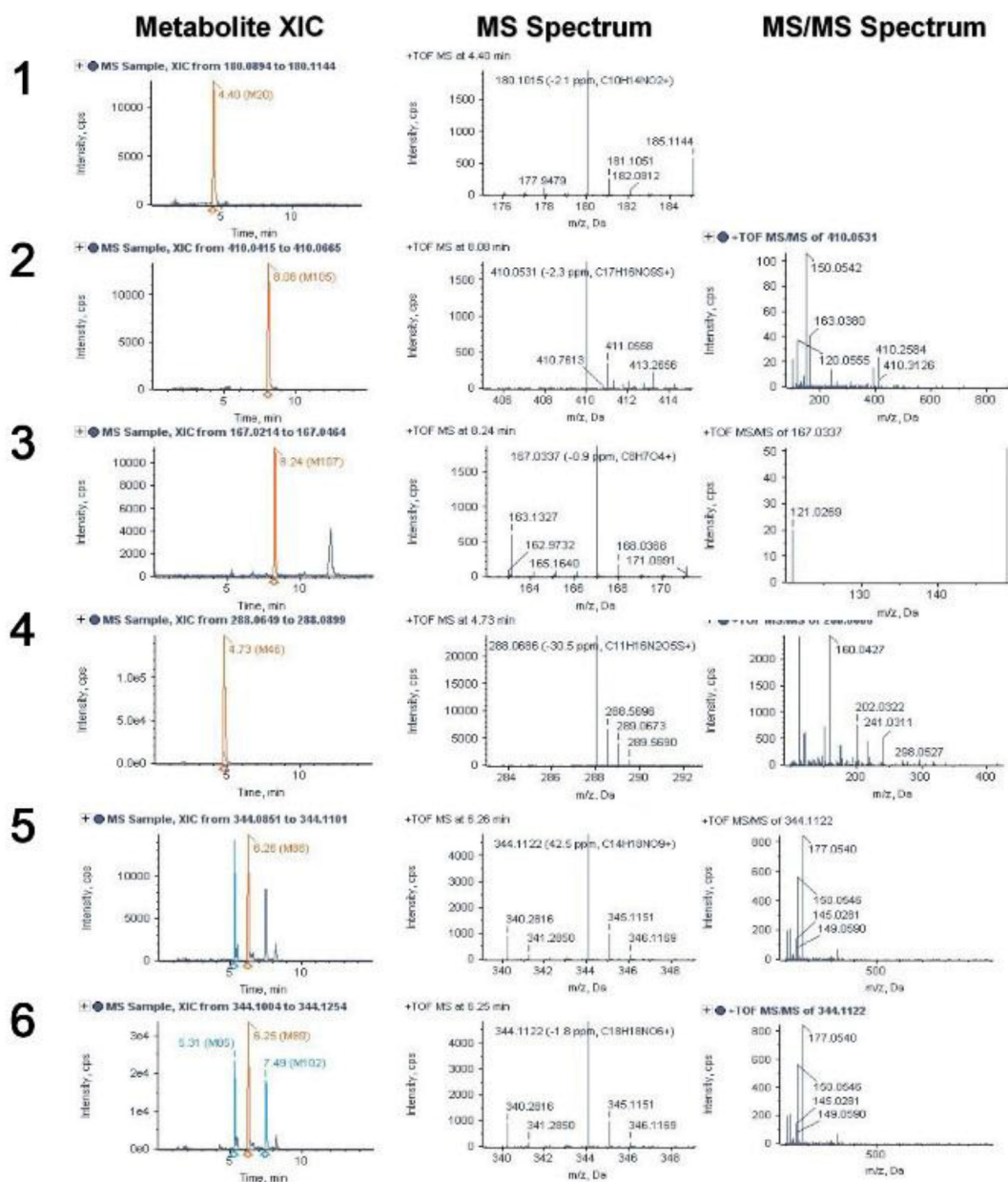
### SUPPLEMENTARY MATERIALS



Supplementary Figure 1: Heart, liver, kidney and spleen Paraffin sections of heart, liver, kidney and spleen were stained by hematoxylin and eosin (HE), and there almost no observable morphological changes after treatments with CAPE and CAPE- $pNO_2$ .



**Supplementary Figure 2: Mass spectrum of metabolites of CAPE.** The mass spectrum of metabolites of CAPE, and the “1, 2, 3, 4” were correspond to the “1, 2, 3, 4” in Figure 6A.



**Supplementary Figure 3: Mass spectrum of metabolites of CAPE-*p*NO<sub>2</sub>.** The mass spectrum of metabolites of CAPE, and the “1, 2, 3, 4, 5, 6” were correspond to the “1, 2, 3, 4, 5, 6” in Figure 6B.