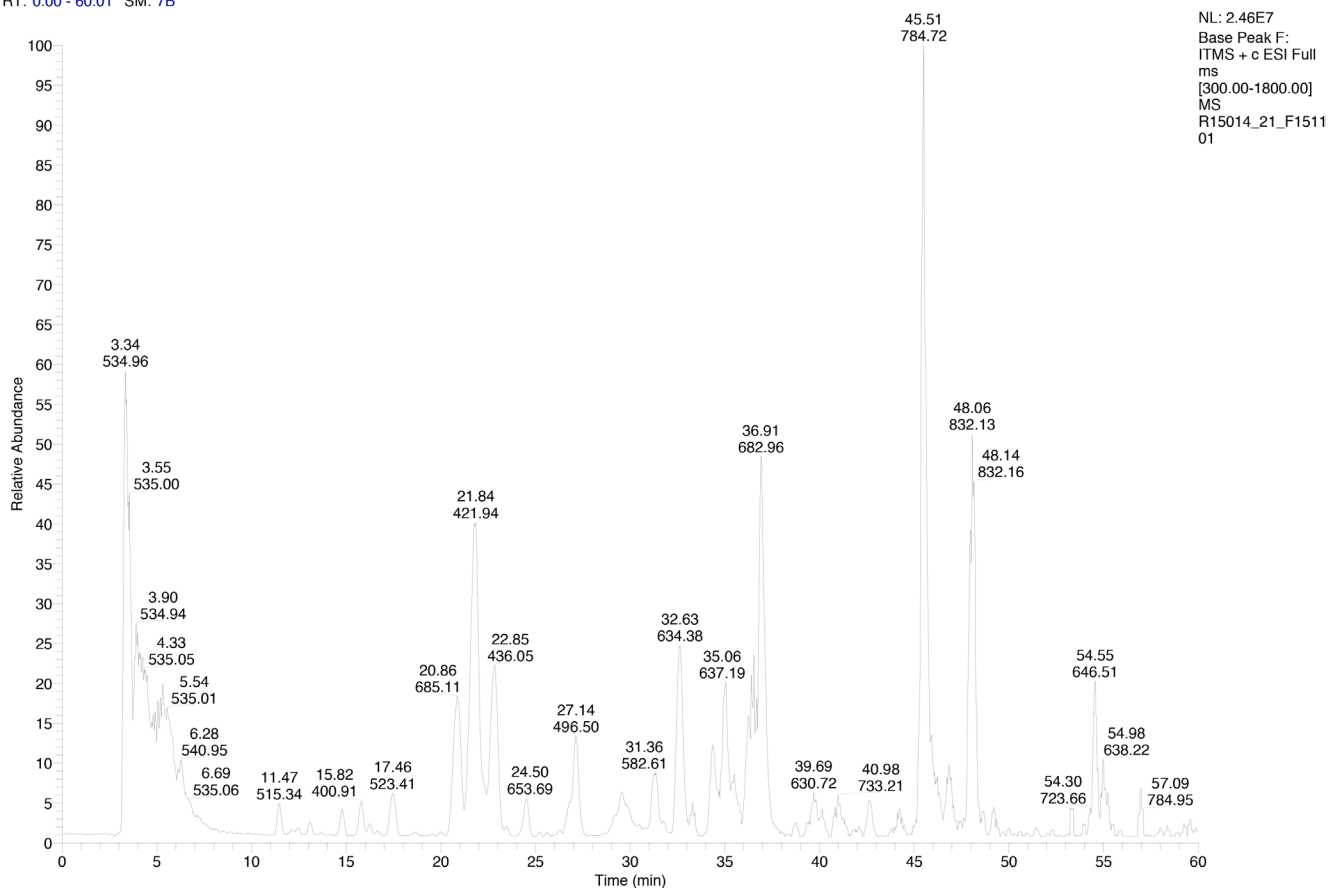


Bovine herpesvirus 1 tegument protein *UL21* plays critical roles in viral secondary envelopment and cell-to-cell spreading

SUPPLEMENTARY MATERIALS

2015-11-16 2:34:1

RT: 0.00 - 60.01 SM: 7B



Supplementary Material 1: Liquid chromatography-mass spectrometry (LC/MS) analysis of immunoprecipitated proteins. Peptide mass spectra peak represents the tryptic peptide obtained from LC-MS analysis. The x axis indicates the time and the y axis represent the relative abundance. Molecular masses of the peptides calculated based on their mass-to-charge (m/z) values.

Supplementary Material 2: Liquid chromatography-mass spectrometry (LC/MS) analysis of immunoprecipitated proteins along with the interacting proteins that correspond to the proteins

See Supplementary File 1