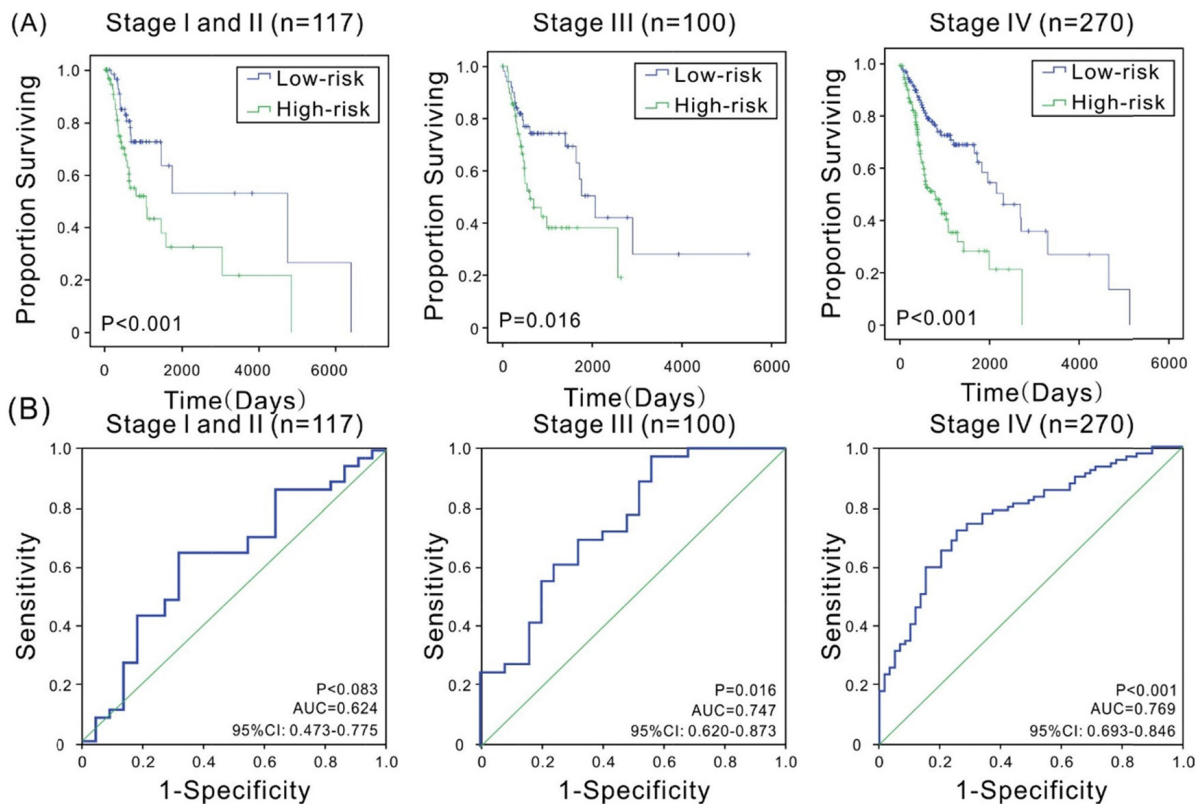
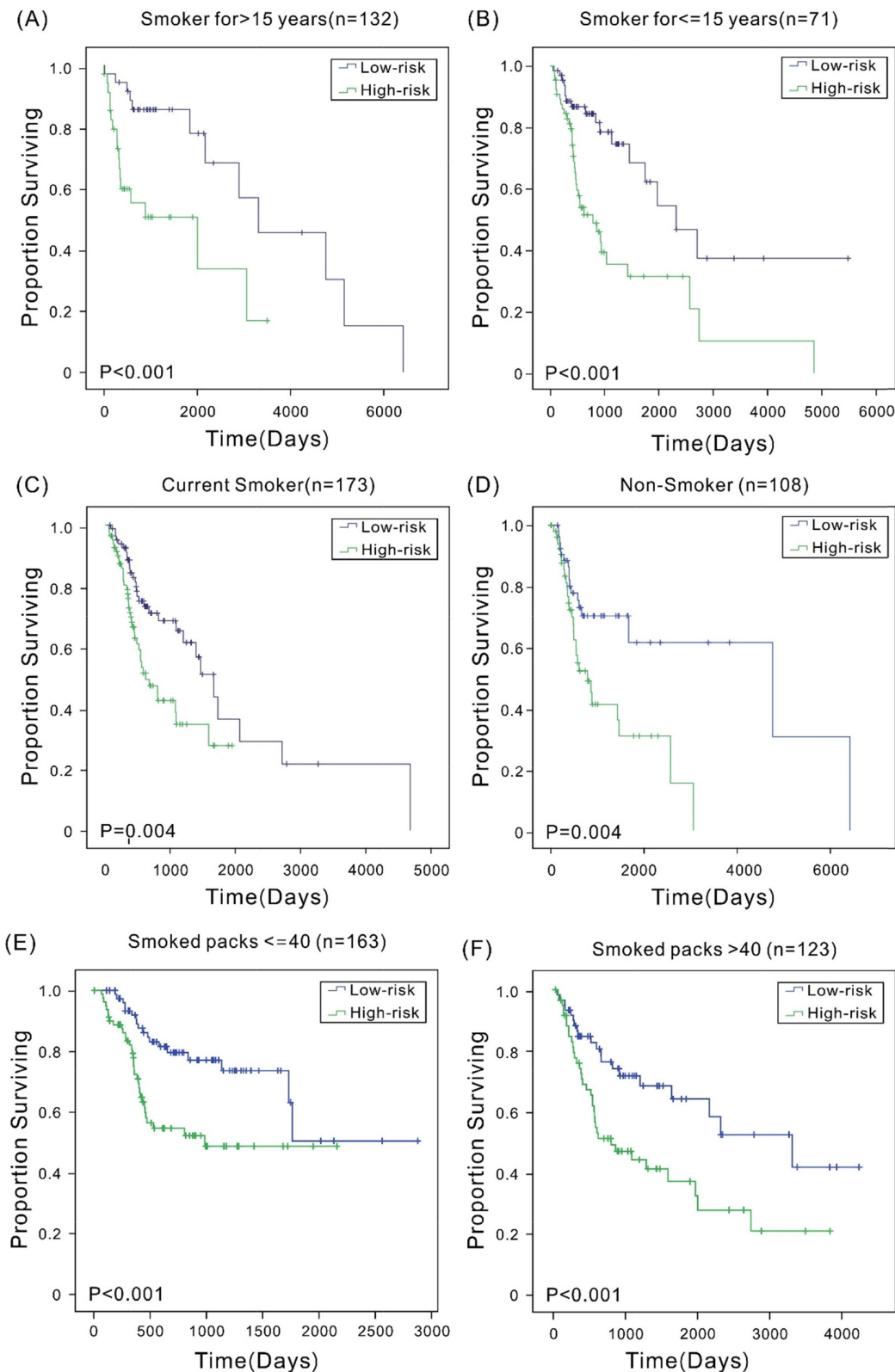


A six-mRNA signature model for the prognosis of head and neck squamous cell carcinoma

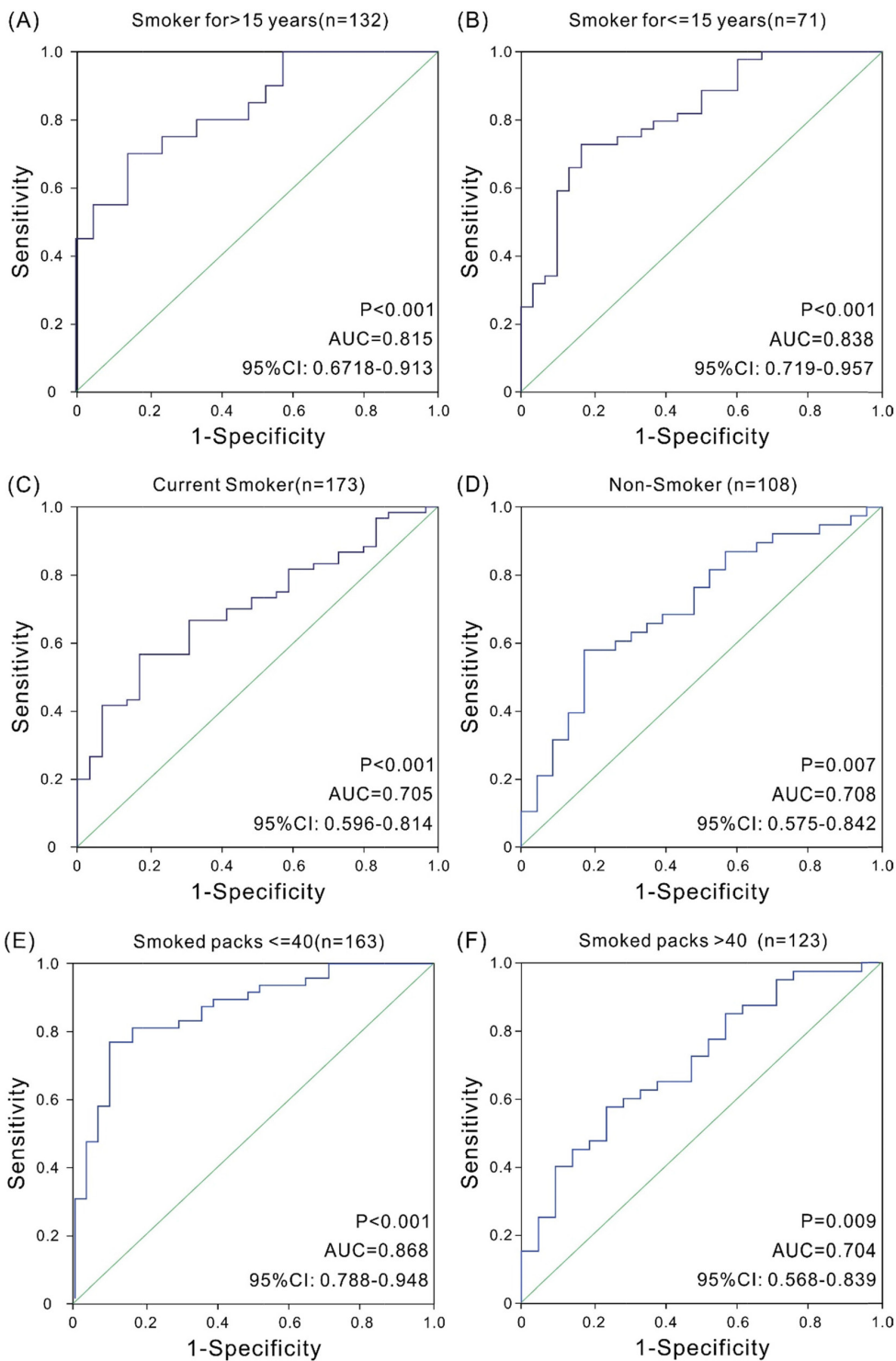
SUPPLEMENTARY MATERIALS



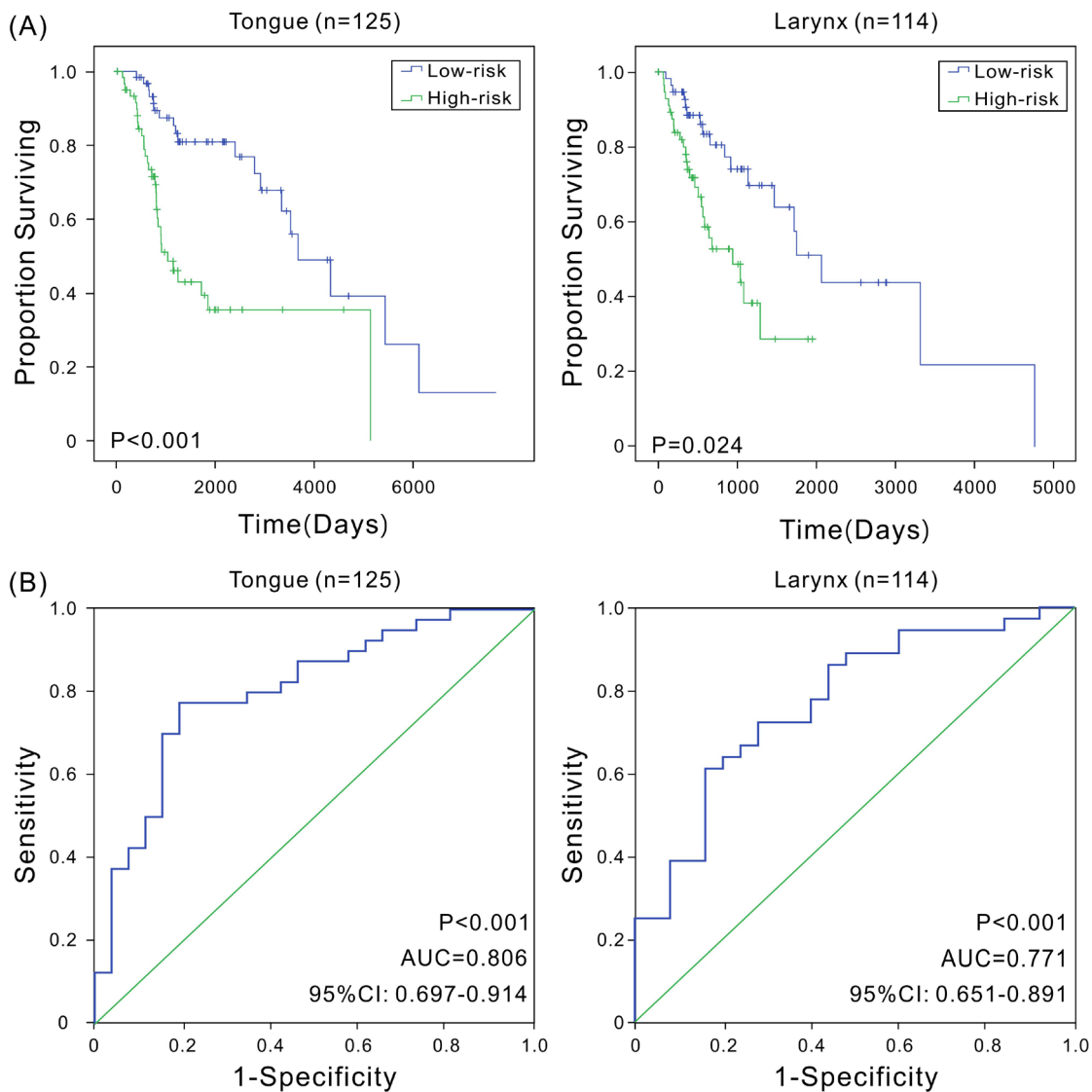
Supplementary Figure 1: Kaplan-Meier estimates of the overall survival of patients with different clinical stage. (A) Kaplan-Meier estimates of the overall survival of patients with different stage; **(B)** ROC curves show the sensitivity and specificity of the six-mRNA signature in predicting the patient overall survival.



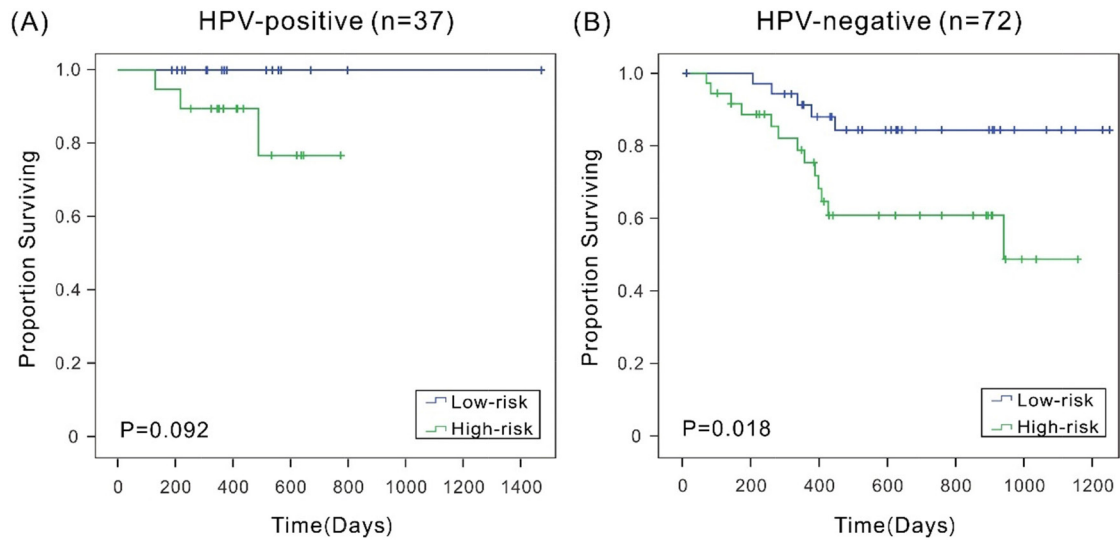
Supplementary Figure 2: Kaplan-Meier estimates of the overall survival of HNSCC patients with different smoking history.



Supplementary Figure 3: ROC analysis of sensitivity and specificity using the six-mRNA signature in predicting the overall survival of HNSCC patients with different smoking history.



Supplementary Figure 4: Kaplan-Meier estimates of the overall survival of patients with different tumor tissue site (Tongue and Larynx). (A) Kaplan-Meier estimates of the overall survival of patients; (B) ROC curves show the sensitivity and specificity of the six-mRNA signature in predicting the patient overall survival.



Supplementary Figure 5: Kaplan-Meier survival curves show correlation between the six-mRNA signature and overall survival in HPV-positive HNSCC patients (A) and HPV-negative HNSCC patients (B).

Supplementary Table 1: Sample list and information of HNSCC patients from TCGA database

See Supplementary File 1

Supplementary Table 2: Univariate Cox regression analysis with a significance level of 0.001 reveals a significant relation between mRNA expression and survival time, and the t test with differential expression between patients with longer OS and those with shorter OS time

See Supplementary File 1

Supplementary Table 3: Kaplan-Meier and ROC analyses of the three-lncRNA signature and 10 known biomarkers

Biomarker	AUC	P-value	95% CI of AUC	P-value^a
Six-mRNA signature	0.745	<0.001	0.65-0.84	<0.001
<i>TP53</i>	0.552	0.369	0.44-0.66	0.329
<i>PTK2</i>	0.513	0.816	0.40-0.62	0.251
<i>SEC62</i>	0.596	0.096	0.49-0.71	0.235
<i>MALAT1</i>	0.520	0.730	0.41-0.63	0.245
<i>HOTAIR</i>	0.568	0.240	0.46-0.68	0.71
<i>LCE5A</i>	0.541	0.481	0.43-0.65	0.011
<i>EIF4E</i>	0.557	0.321	0.44-0.67	0.241
<i>SOX4</i>	0.550	0.386	0.44-0.66	0.164
<i>MDM2</i>	0.538	0.905	0.40-0.62	0.164
<i>ANO1</i>	0.538	0.513	0.43-0.65	0.205

a. log-rank test.