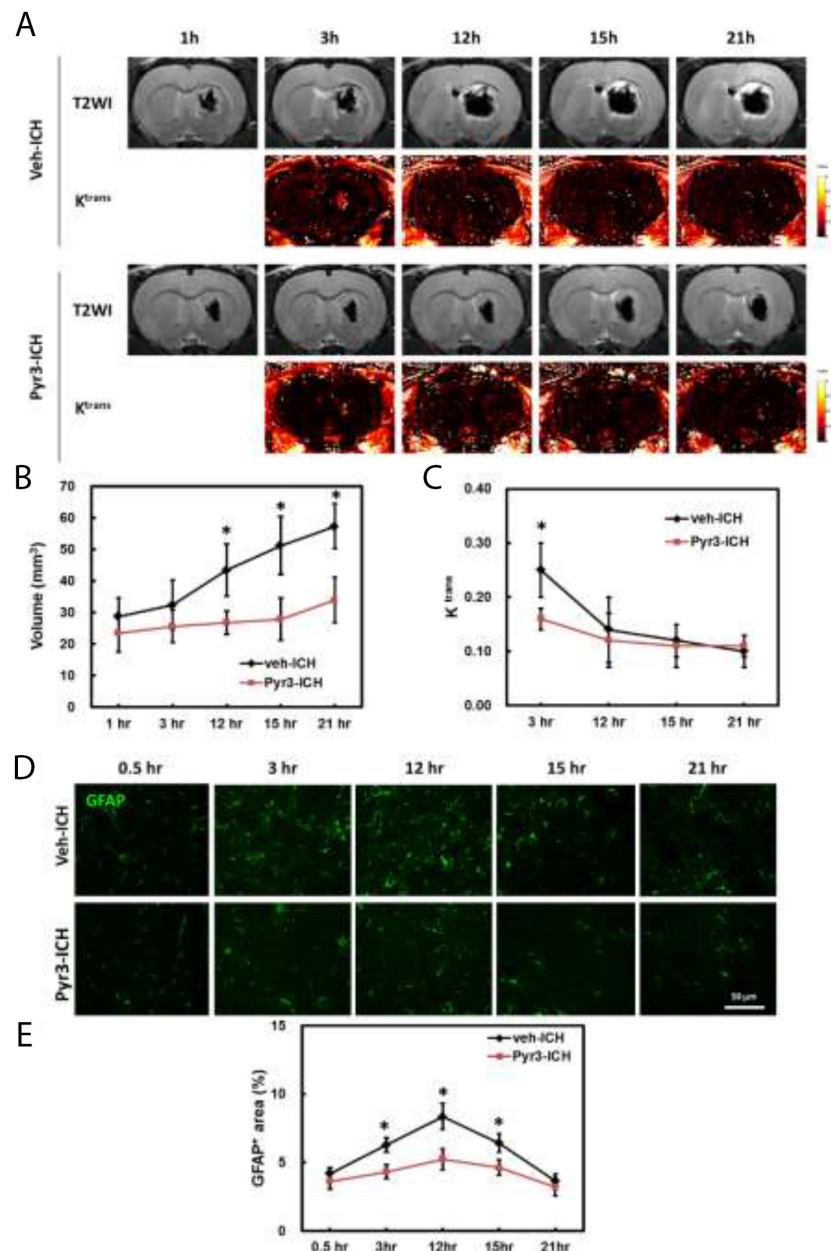
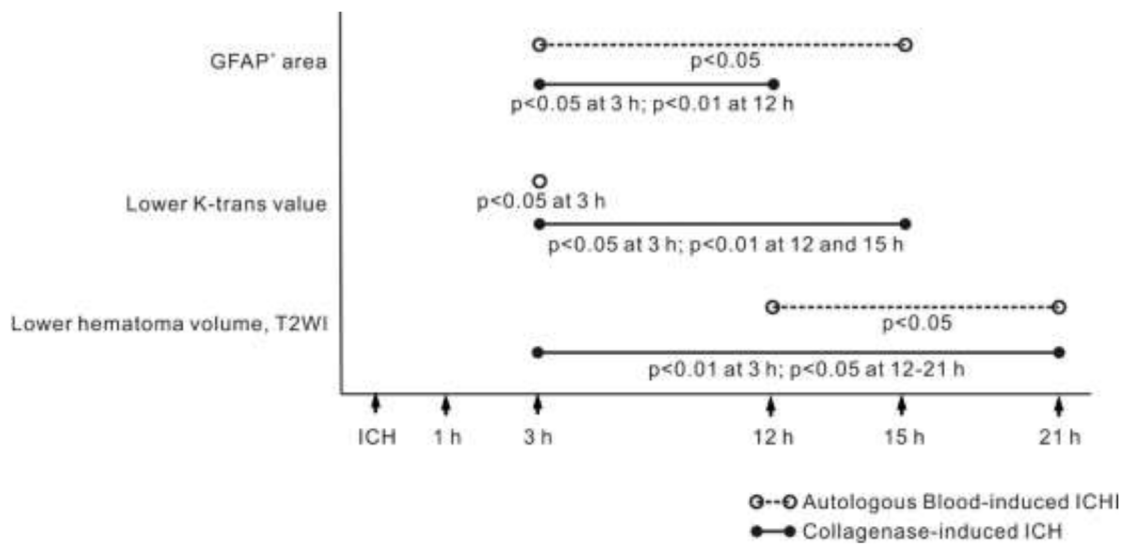


## Inhibition of astrocytic activity alleviates sequela in acute stages of intracerebral hemorrhage

### SUPPLEMENTARY MATERIALS



**Supplementary Figure 1: Inhibition astrocytic activity also retards the progress at hyperacute and acute stages in autologous blood-induced ICH model. (A)** Representative T2WI and  $K^{trans}$  maps of vehicle- and Pyr3-treated rats in autologous blood-induced ICH model. **(B)** Volumes of the hematomas at different time points were estimated using T2WIs. **(C)** The graph of the  $K^{trans}$  values. **(D)** Representative GFAP staining of vehicle- and Pyr3-treated rats. **(E)** GFAP staining of vehicle- and Pyr3-treated groups plot. Data are presented as the mean  $\pm$  SD. \* $p < 0.05$ .



**Supplementary Figure 2: Finishing chart for statistical significance of each assay.** All collected data was compared between Pyr-3-ICH groups with Veh-ICH groups.