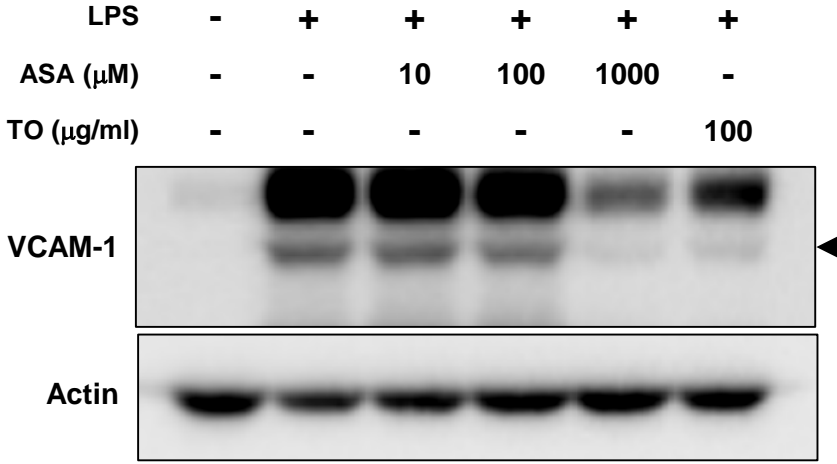
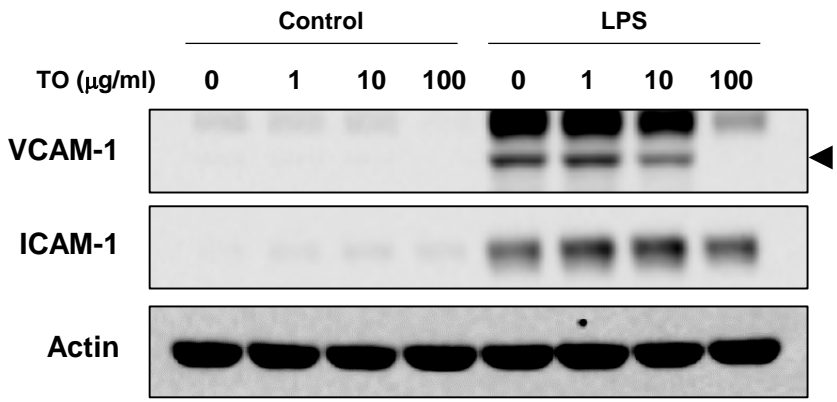


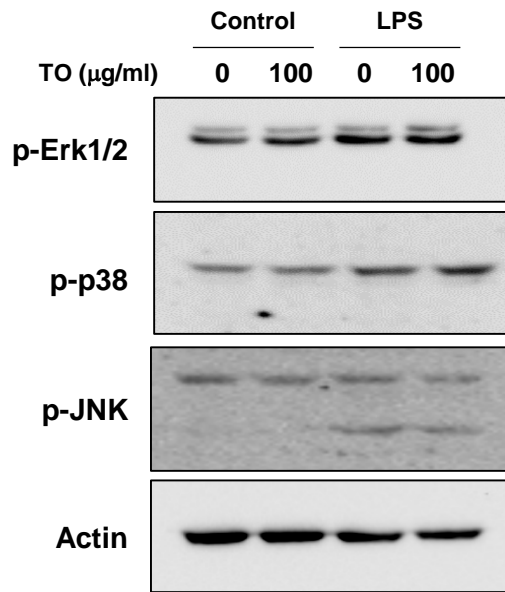
Additional files



Additional file 1: Figure S1. Comparison of TO efficacy with acetylsalicylic acid (ASA). HUVECs were pretreated with TO (100 $\mu\text{g/ml}$) or different concentrations of ASA for one hour, and then stimulated with 1 $\mu\text{g/ml}$ LPS for 24 h. VCAM-1 and actin levels were assessed by Western blot analysis. Arrow head indicates VCAM-1.



Additional file 1: Figure S2. TO decreases VCAM-1 induction dose dependently but does not affect ICAM-1 levels in LPS-stimulated HUVECs. HUVECs were pretreated with different concentrations of TO for one hour, and then stimulated with 1 $\mu\text{g/ml}$ LPS for 24 h. VCAM-1, ICAM-1, and actin levels were assessed by Western blot analysis. Arrow head indicates VCAM-1.



Additional file 1: Figure S3. TO does not affect MAPK activation induced by LPS stimulation
 HUVECs were preincubated with TO (100 $\mu\text{g/ml}$) for one hour and then stimulated with LPS (1 $\mu\text{g/ml}$) for 30 min. MAPKs activation was assessed by Western blot analysis.