

## Supplementary Online Content

Suntharalingam M, Winter K, Ilson D, et al. Effect of the addition of cetuximab to paclitaxel, cisplatin, and radiation therapy for patients With esophageal cancer: The NRG Oncology RTOG 0436 phase 3 randomized clinical trial [published online July 6, 2017]. *JAMA Oncol*. doi:10.1001/jamaoncol.2017.1598

**eTable 1a.** Radiation Therapy Planning Review

**eTable 1b.** Chemotherapy/Targeted Agent Review

**eTable 2.** Reported Surgery in Follow-up for All Patients

**eFigure.** Overall Survival by Clinical Disease Status (n=303)

This supplementary material has been provided by the authors to give readers additional information about their work.

### **Initial Report of NRG Oncology RTOG 0436: A Phase III Trial Evaluating the Addition of Cetuximab to Paclitaxel, Cisplatin, and Radiation for Patients with Esophageal Cancer**

Mohan Suntharalingam, MD, MBA<sup>1</sup>, Kathryn Winter, MS<sup>2</sup>, David Ilson, MD, PhD<sup>3</sup>, Adam P. Dicker, MD, PhD<sup>4</sup>, Lisa Kachnic, MD<sup>5</sup>, André Konski, MD<sup>6</sup>, A. Bapsi Chakravarthy, MD<sup>5</sup>, Christopher J. Anker, MD<sup>7</sup>, Harish Thakrar, MD<sup>8</sup>, Naomi Horiba, MD<sup>9</sup>, Ajay Dubey, MD, MPH, MBA<sup>10</sup>, Joel S. Greenberger, MD<sup>11</sup>, Adam Raben, MD<sup>12</sup>, Jeffrey Giguere, MD<sup>13</sup>, Kevin Roof, MD<sup>14</sup>, Gregory Videtic, MD<sup>15</sup>, Jondavid Pollock, MD<sup>16</sup>, Howard Safran, MD<sup>17</sup>, Christopher H. Crane, MD<sup>18</sup>

<sup>1</sup> University of Maryland Medical System, Baltimore, MD

<sup>2</sup> NRG Oncology Statistics and Data Management Center, Philadelphia, PA

<sup>3</sup> Memorial Sloan-Kettering Cancer Center, New York City, NY

<sup>4</sup> Thomas Jefferson University Hospital, Philadelphia, PA

<sup>5</sup> Vanderbilt University Medical Center, Ingram Cancer Center, Nashville, TN

<sup>6</sup> The Chester County Hospital, West Chester, PA

<sup>7</sup> Huntsman Cancer Hospital, University of Utah, Salt Lake City, Utah

<sup>8</sup> John H. Stroger, Jr. Hospital of Cook County MBCCOP, Chicago, IL

<sup>9</sup> University of Maryland Medical System, Baltimore, MD (during trial), Food and Drug Administration, Bethesda, MD (current)

<sup>10</sup> USON- Texas Oncology, Bedford, TX

<sup>11</sup> UPMC-Shadyside Hospital, Pittsburgh, PA

<sup>12</sup> Christiana Care Health Services, Inc. CCOP Newark, DE,

<sup>13</sup> Greenville South Carolina CCOP, Greenville, SC

- <sup>14</sup> Southeast Cancer Control Consortium, Inc., CCOP, Winston Salem, NC  
<sup>15</sup> Cleveland Clinic, Cleveland, OH  
<sup>16</sup> The Schiffler Cancer Center, Wheeling, WV  
<sup>17</sup> Brown University Oncology Group, Providence, RI  
<sup>18</sup> University of Texas-MD Anderson Cancer Center, Houston, TX (during trial),  
Memorial Sloan-Kettering Cancer Center, New York City, NY (current)

**Corresponding author**

Mohan Suntharalingam, MD, MBA  
Department of Radiation Oncology  
The Marlene and Stewart Greenebaum Cancer Center  
The University of Maryland School of Medicine  
22 South Greene Street  
Baltimore MD, 21201  
Phone: 410-328-2324  
Fax: 410-328-6911  
[msuntha@umm.edu](mailto:msuntha@umm.edu)

## **Table of Contents**

### **eTables**

eTable 1a. Radiation Therapy Planning Review 4

eTable 1b. Chemotherapy/Targeted Agent Review 5

eTable 2. Reported Surgery in Follow-up for All Patients 6

### **eFigure**

eFigure 1. Overall Survival by Clinical Disease Status (n=303) 7

**eTable 1a. Radiation Therapy Planning Review**

	RT+Chemo+Cetuximab (n=159)	RT+Chemo (n=169)
Tumor volume contouring score	(n=159)	(n=169)
Per protocol	120 (75.5%)	136 (80.5%)
Acceptable variation	18 (11.3%)	12 (7.1%)
Unacceptable variation	9 (5.7%)	7 (4.1%)
Not evaluable	12 (7.5%)	14 (8.3%)
Organs at risk contouring score	(n=159)	(n=169)
Per protocol	135 (84.9%)	141 (83.4%)
Acceptable variation	4 (2.5%)	8 (4.7%)
Unacceptable variation	8 (5.0%)	6 (3.6%)
Not evaluable	12 (7.5%)	14 (8.3%)
Tumor volume dose volume analysis score	(n=159)	(n=169)
Per protocol	109 (68.6%)	121 (71.6%)
Acceptable variation	15 (9.4%)	23 (13.6%)
Unacceptable variation	23 (14.5%)	7 (4.1%)
Not evaluable	12 (7.5%)	18 (10.7%)
Organs at risk dose volume analysis score	(n=159)	(n=169)
Per protocol	36 (22.6%)	28 (16.6%)
Acceptable variation	111 (69.8%)	123 (72.8%)
Unacceptable variation	0 (0.0%)	0 (0.0%)
Not evaluable	12 (7.5%)	18 (10.7%)

**eTable 1b. Chemotherapy/Targeted Agent Review**

	RT+Chemo+Cetuximab (n=159)	RT+Chemo (n=169)
Per protocol	109 (68.6%)	127 (75.1%)
Not per protocol	44 (27.7%)	41 (24.3%)
Not evaluable	6 (3.8%)	1 (0.6%)
Per protocol, no modifications or delays	66 (41.5%)	83 (49.1%)
Per protocol, modifications and/or delays	43 (27.0%)	44 (26.0%)
Not per protocol, modifications and/or delays with $\geq$ 80% of protocol dose given	26 (16.4%)	25 (14.8%)
Not per protocol, modifications and/or delays with $<$ 80% of protocol dose given	18 (11.3%)	16 (9.5%)
Not evaluable	6 (3.8%)	1 (0.6%)
Dose modified/delayed due to AEs	82 (51.6%)	86 (50.9%)
Treatment terminated due to AEs	40 (25.2%)	25 (14.8%)

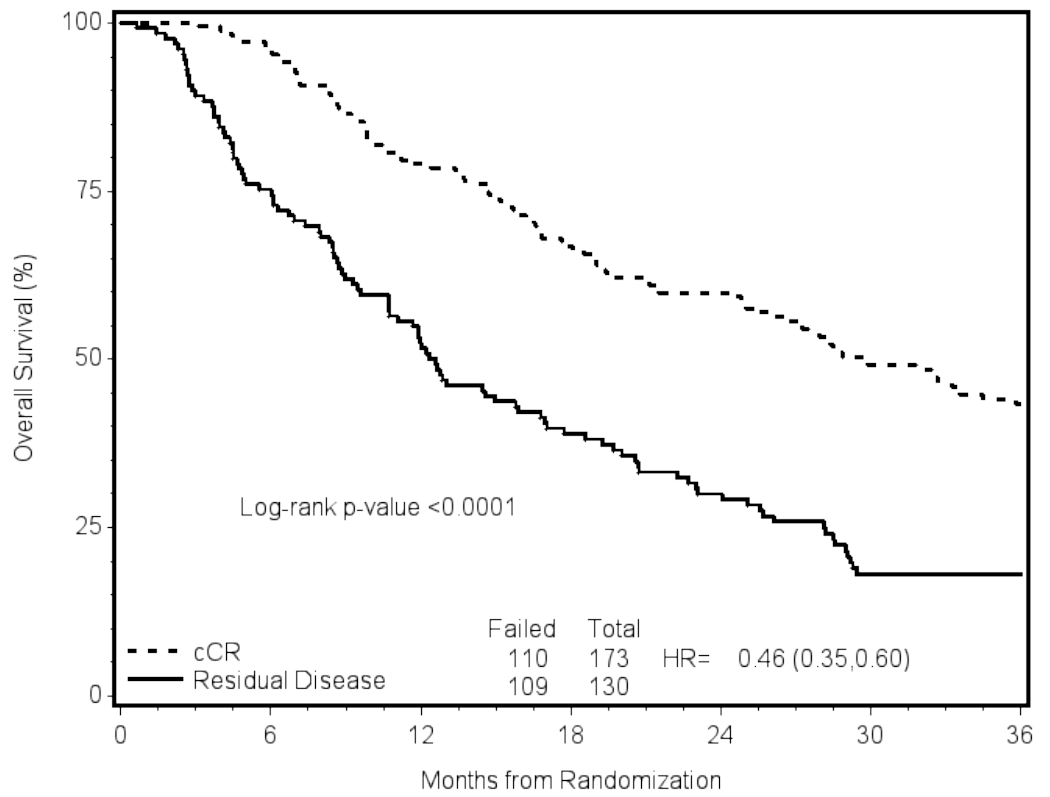
**eTable 2. Reported Surgery in Follow-up for All Patients**

	No (n=284)	Yes (n=44)	Total (n=328)
RX			
RT+Chemo+Cetuximab	134 (47.2%)	25 <sup>†</sup> (56.8%)	159 (48.5%)
RT+Chemo	150 (52.8%)	19 <sup>‡</sup> (43.2%)	169 (51.5%)

<sup>†</sup>Residual=13; Recurrent=12

<sup>‡</sup>Residual=13; Recurrent=6

**eFigure 1. Overall Survival by Clinical Disease Status (n=303)**



Patients at Risk	0	6	12	18	24	30	36
cCR	173	165	136	115	102	82	58
Residual Disease	130	97	65	48	36	20	19