

## Supplementary Online Content

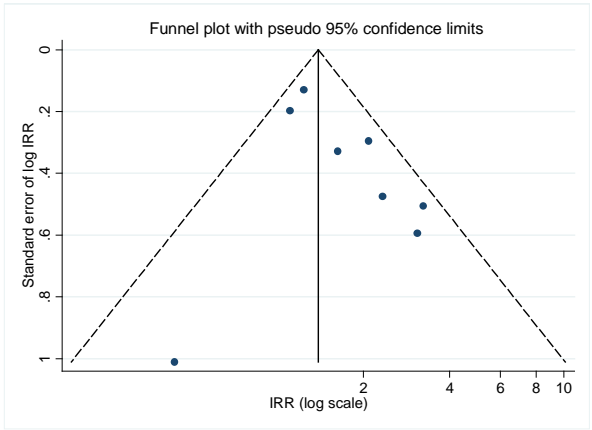
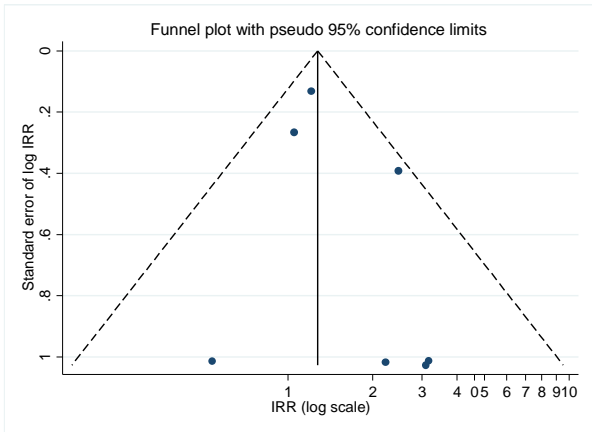
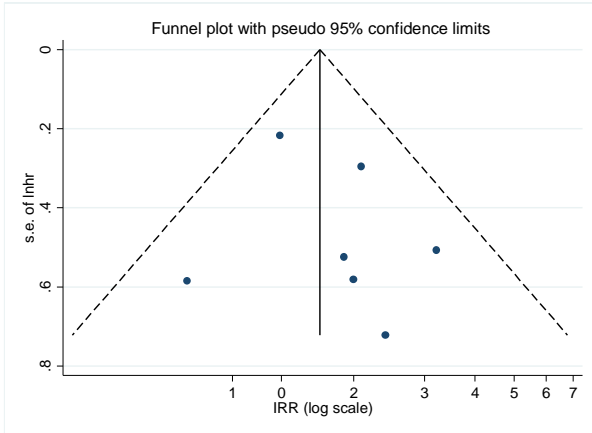
Xie J, Ikram MK, Cotch MF, et al. Association of diabetic macular edema and proliferative diabetic retinopathy with cardiovascular disease: a systematic review and meta-analysis. *JAMA Ophthalmol*. Published online May 4, 2017. doi: 10.1001/jamaophthalmol.2017.0988.

**eFigure 1.** Funnel plots showing the studies including the different meta-analyses

**eFigure 2.** Galbraith plot

**eFigure 3.** Forest plots for the association of diabetic macular edema, proliferative diabetic retinopathy, and of vision-threatening diabetic retinopathy with first-ever cardiovascular disease

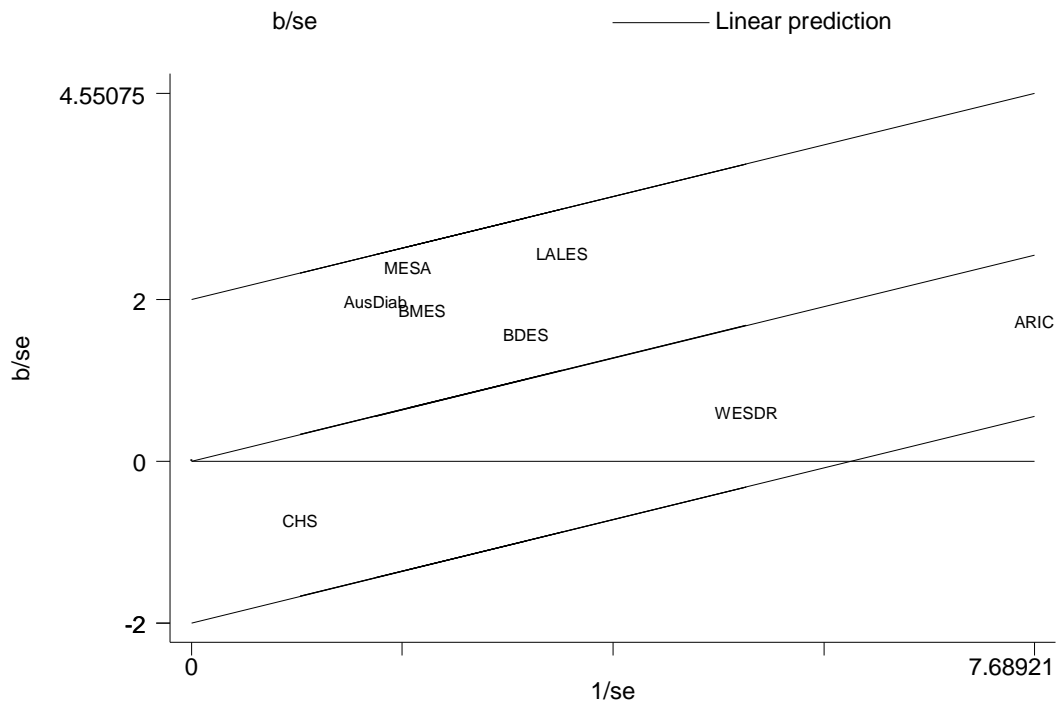
**This supplementary material has been provided by the authors to give readers additional information about their work.**



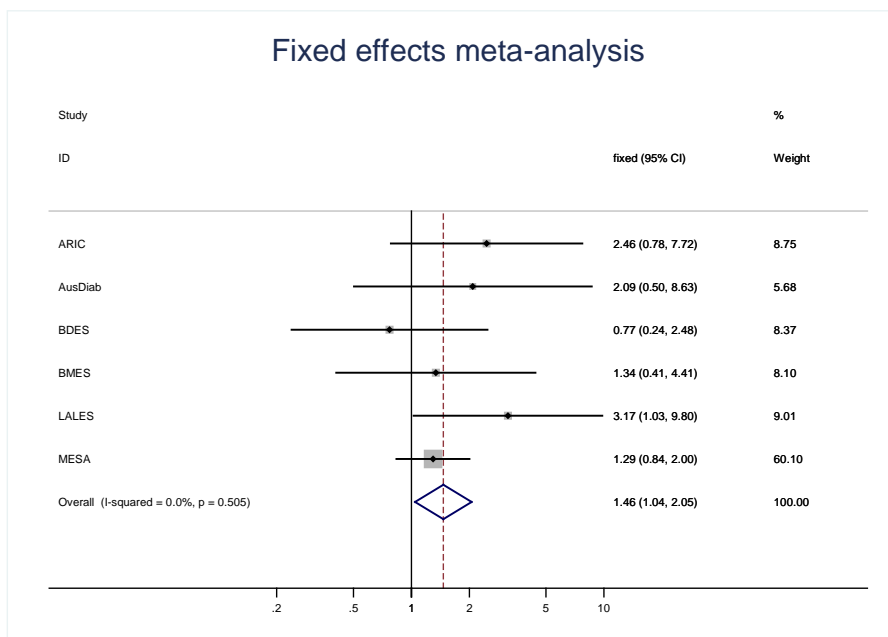
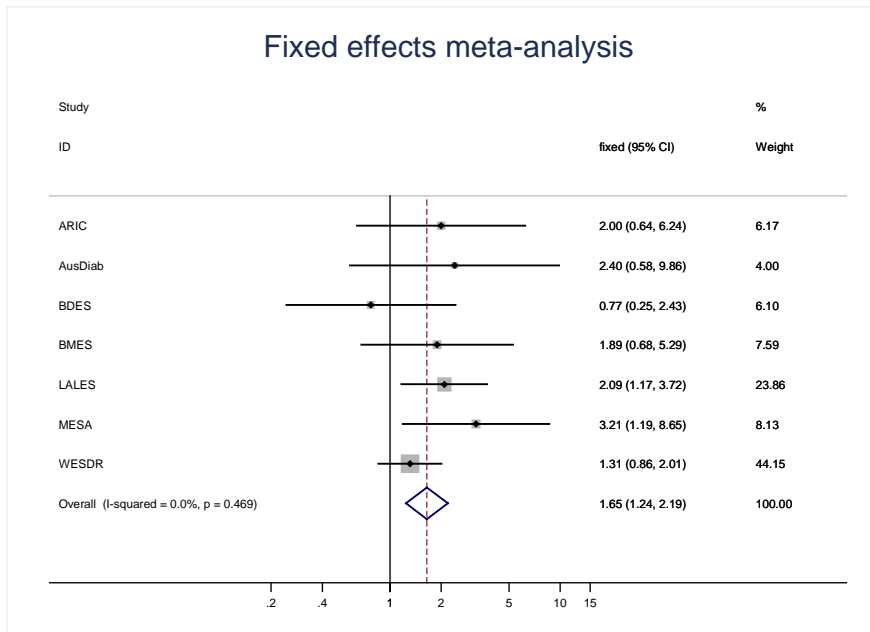
S1a  
S1c

S1b

**eFigure 1.** Funnel plots showing the studies including the different meta-analyses: (1a) diabetic macular edema; (1b) proliferative diabetic retinopathy; (1c) vision-threatening diabetic retinopathy.

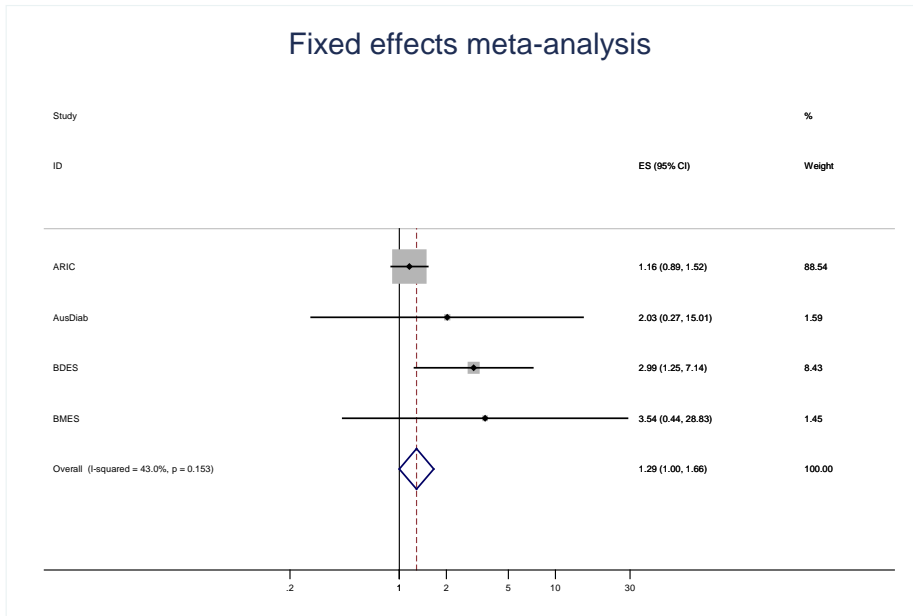
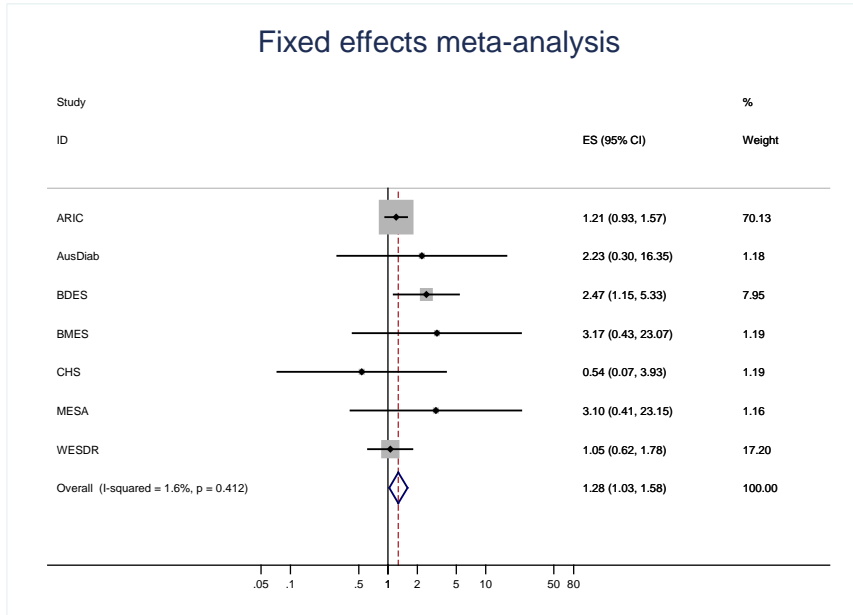


**eFigure 2.** Galbraith plot: on the Y-axis effect size/standard error [ $b/se$ ] and on the X-axis inverse of the standard error [ $1/se$ ] showing no heterogeneity in our meta-analysis (vision-threatening diabetic retinopathy and first-ever cardiovascular disease).



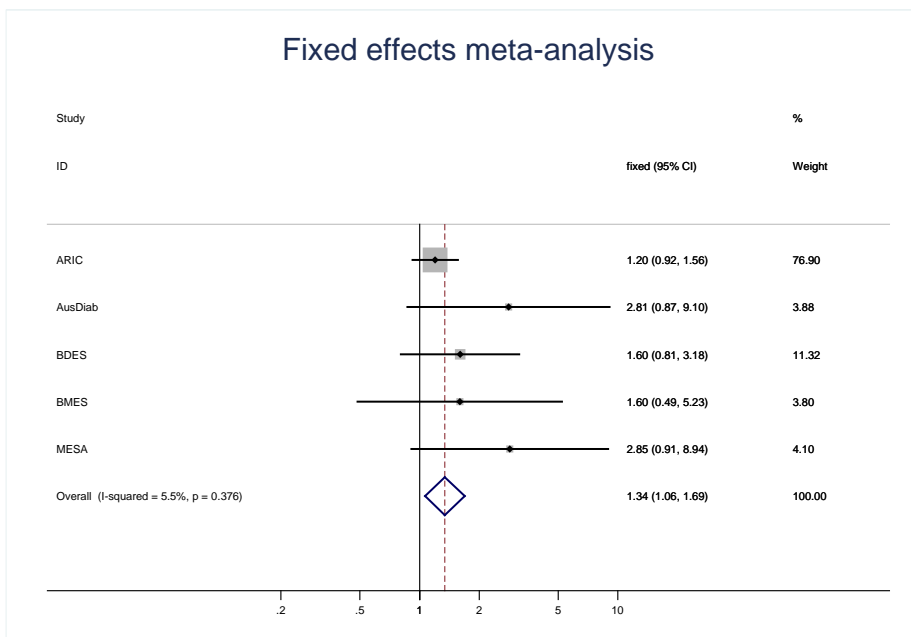
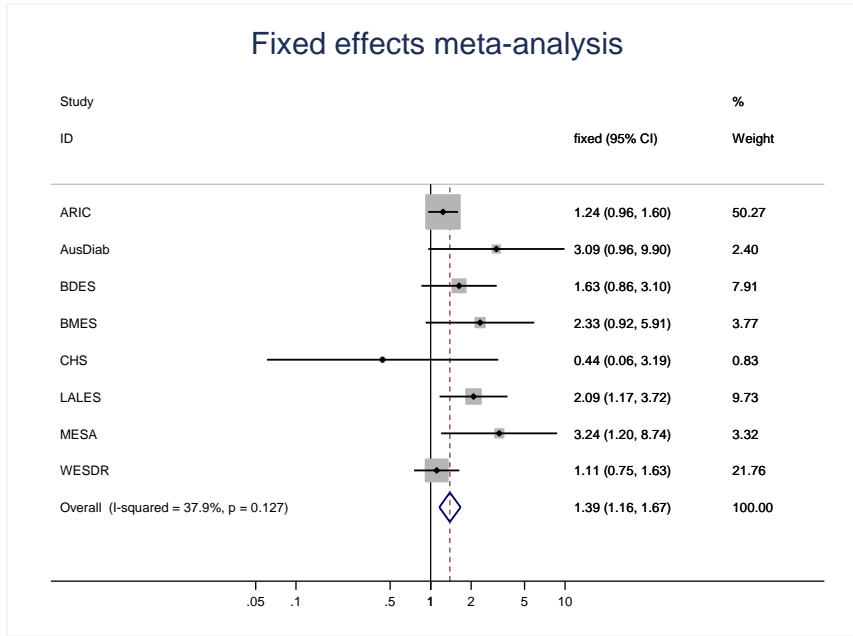
Model I  
Model II

**eFigure 3a.** Forest plots for the association of diabetic macular edema with first-ever cardiovascular disease (models I & II).



Model I  
Model II

**eFigure 3b.** Forest plots for the association of proliferative diabetic retinopathy with first-ever cardiovascular disease (models I & II).



Model I  
Model II

**eFigure 3c.** Forest plots for the association of vision-threatening diabetic retinopathy with first-ever cardiovascular disease (models I & II).