

## Supplementary Online Content

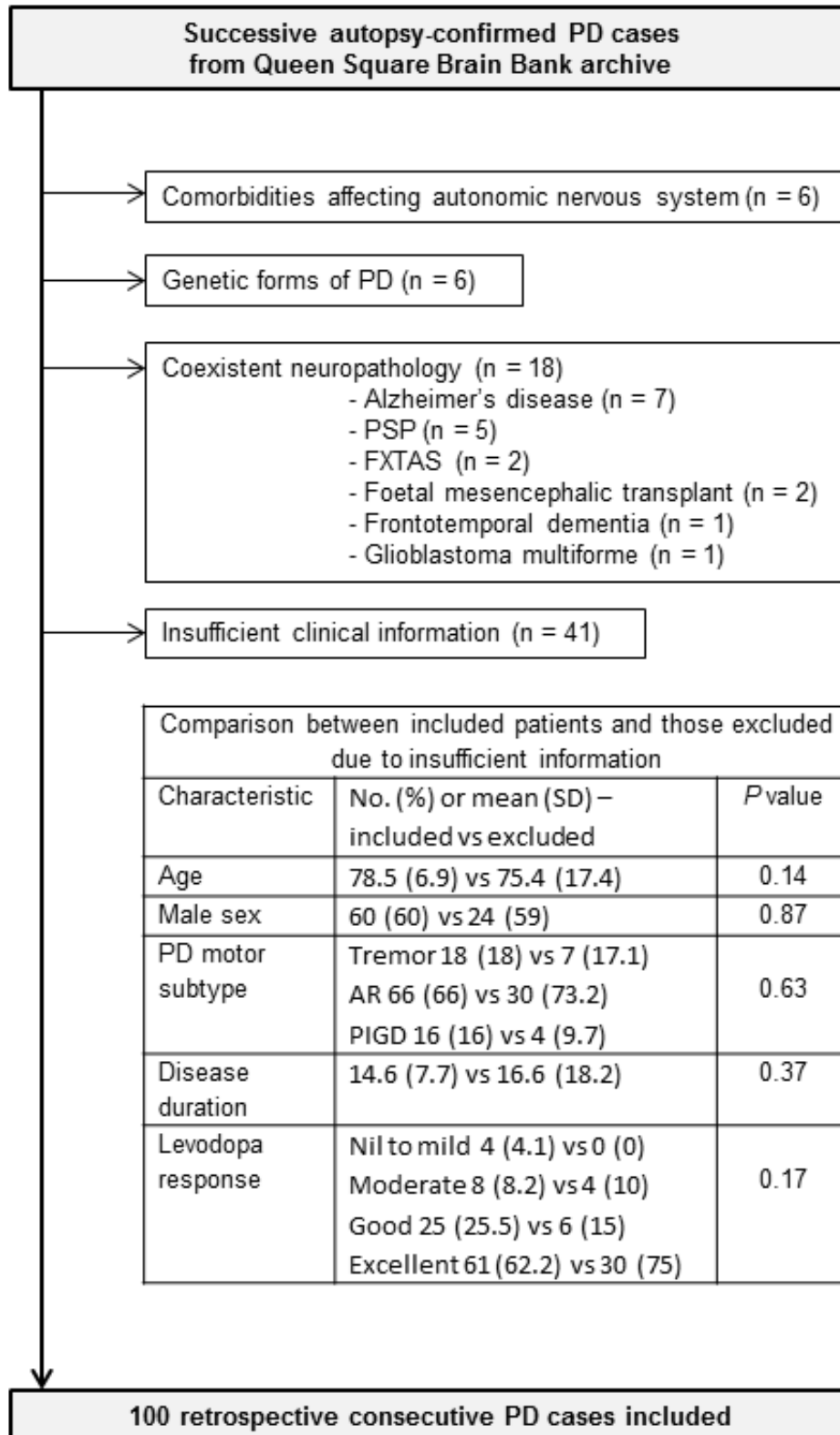
De Pablo-Fernandez E, Tur C, Revesz T, Lees AJ, Holton JL, Warner TT. Association of autonomic dysfunction with disease progression and survival in Parkinson disease. *JAMA Neurol*. Published online June 26, 2017. doi:10.1001/jamaneurol.2017.1125

**eFigure 1.** Flowchart of the Study

**eFigure 2.** Kaplan-Meier Failure Curves for Parkinson's Disease Patients by Time to Development of Autonomic Dysfunction Groups (Early vs Late) Showing Risk of Outcome

This supplementary material has been provided by the authors to give readers additional information about their work.

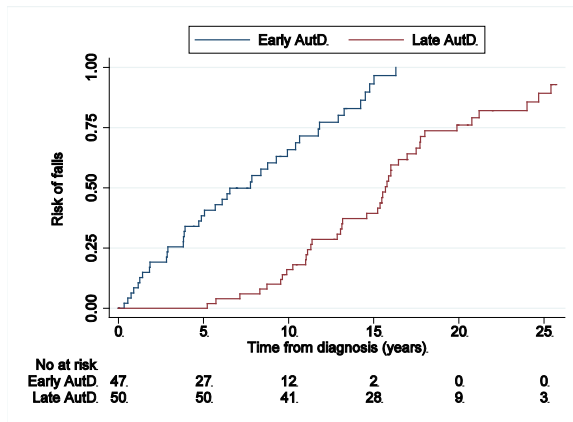
**eFigure 1.** Flowchart of the Study



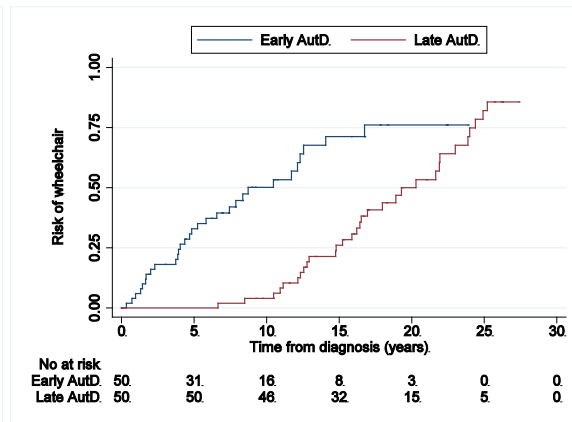
AR, akinetic-rigid; FXTAS, fragile-X tremor ataxia syndrome; PI GD, postural instability and gait difficulty; PD, Parkinson's disease; PSP, progressive supranuclear palsy

**eFigure 2.** Kaplan-Meier Failure Curves for Parkinson’s Disease Patients by Time to Development of Autonomic Dysfunction Groups (Early vs Late) Showing Risk of Outcome

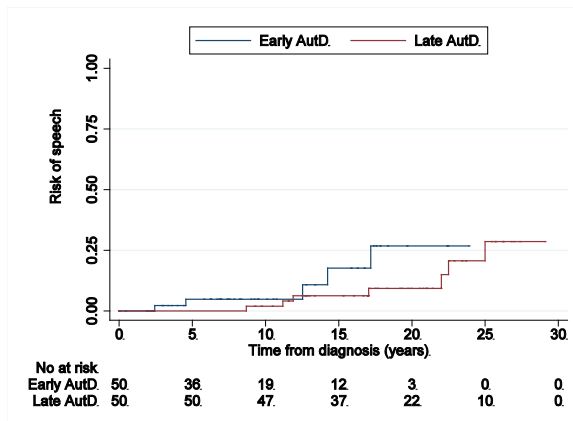
A



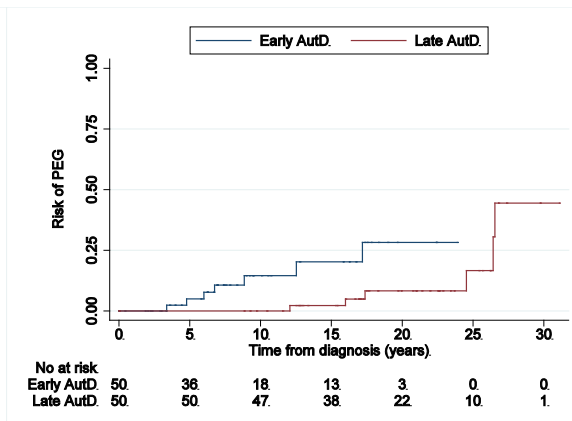
B



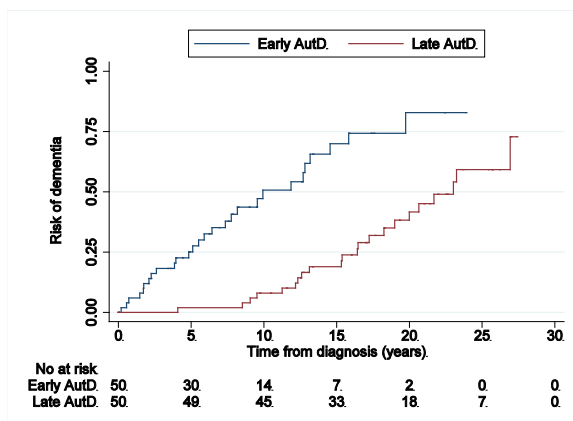
C



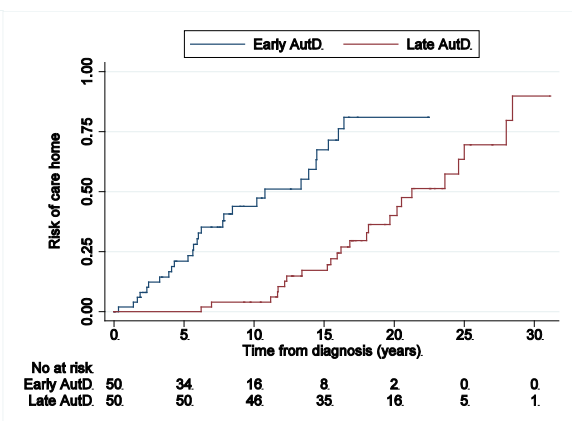
D



E



F



A, Falls; B, wheelchair dependence; C, unintelligible speech; D, severe dysphagia; E, dementia; and F, home care placement.