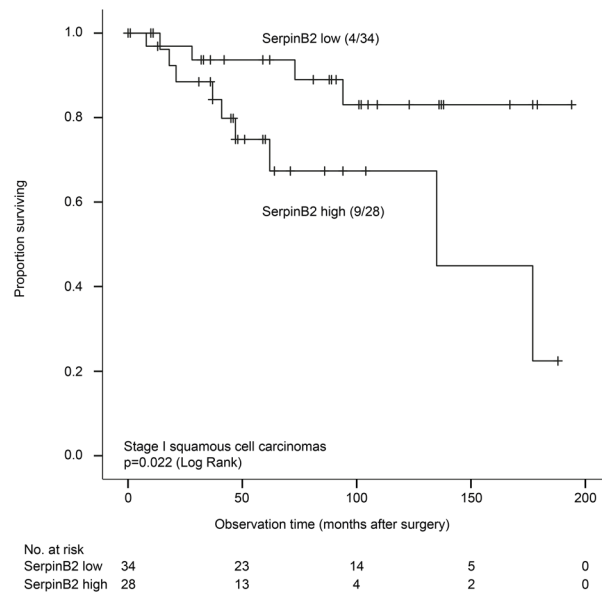


# Low expression of SerpinB2 is associated with reduced survival in lung adenocarcinomas

## SUPPLEMENTARY MATERIALS



**Supplementary Figure 1: Lung cancer specific survival for stage I squamous cell carcinomas (n=62) according to low and high expression of SerpinB2 (Kaplan-Meier).** Numbers in brackets indicate events and total number of cases in each group.

For Supplementary Tables, see Supplementary Tables files