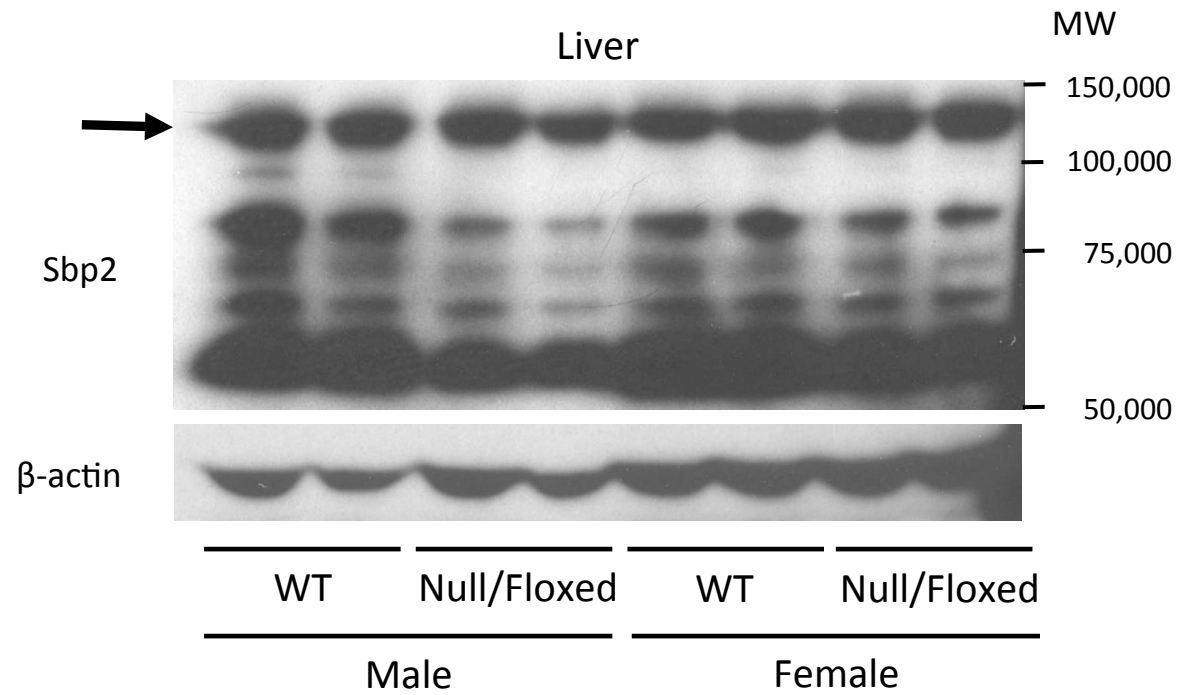
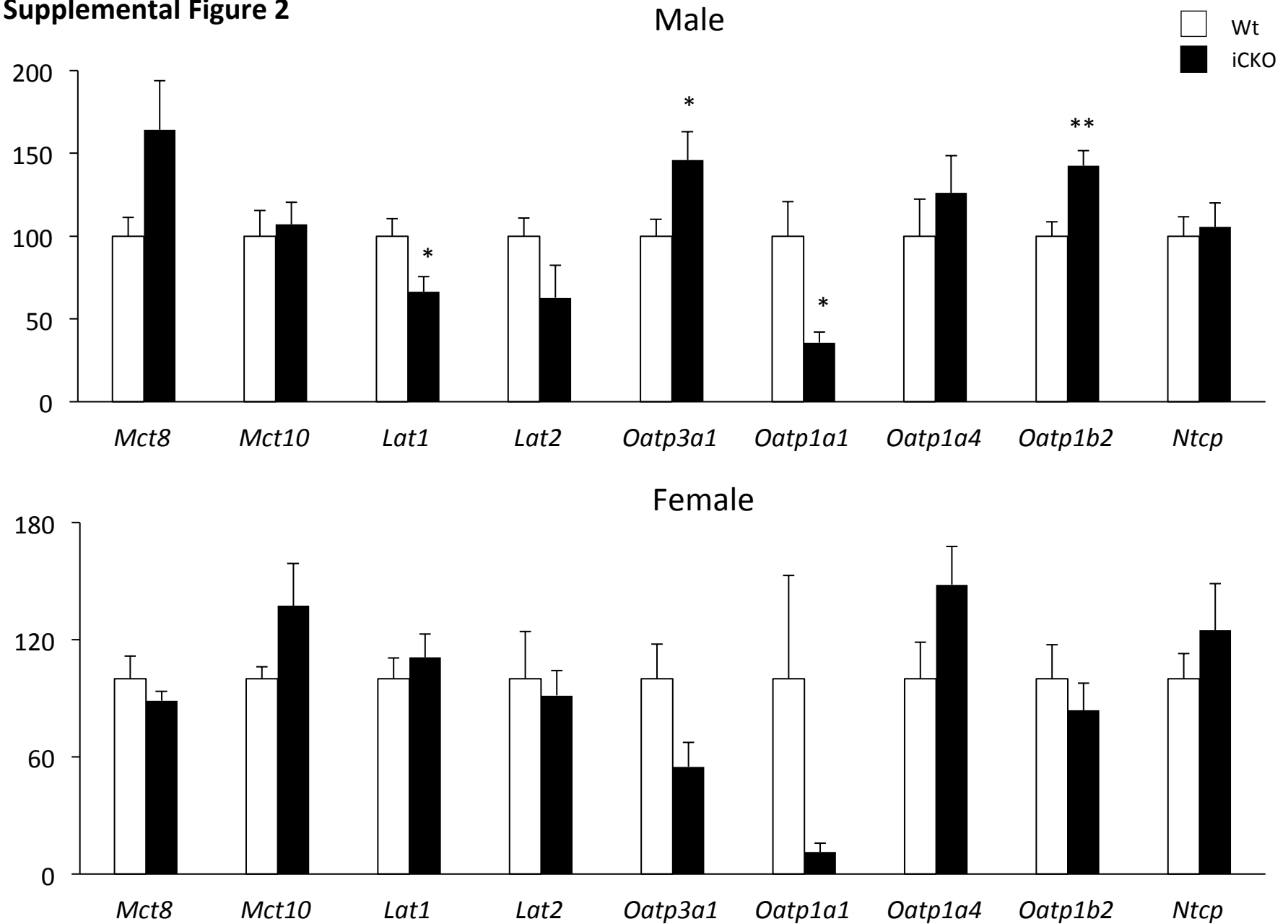


Supplemental Figure 1



Western blot for Sbp2 in liver of P21 *Wt* and compound heterozygous *Null/Floxed* mice without tamoxifen injection, the full length Sbp2 isoform is indicated by arrow.

Supplemental Figure 2



Expression of TH transporters in liver of *Shp2* iCKO vs *Wt* mice *, $P < 0.05$; **, $P < 0.01$, 10 mice were studied in each group.