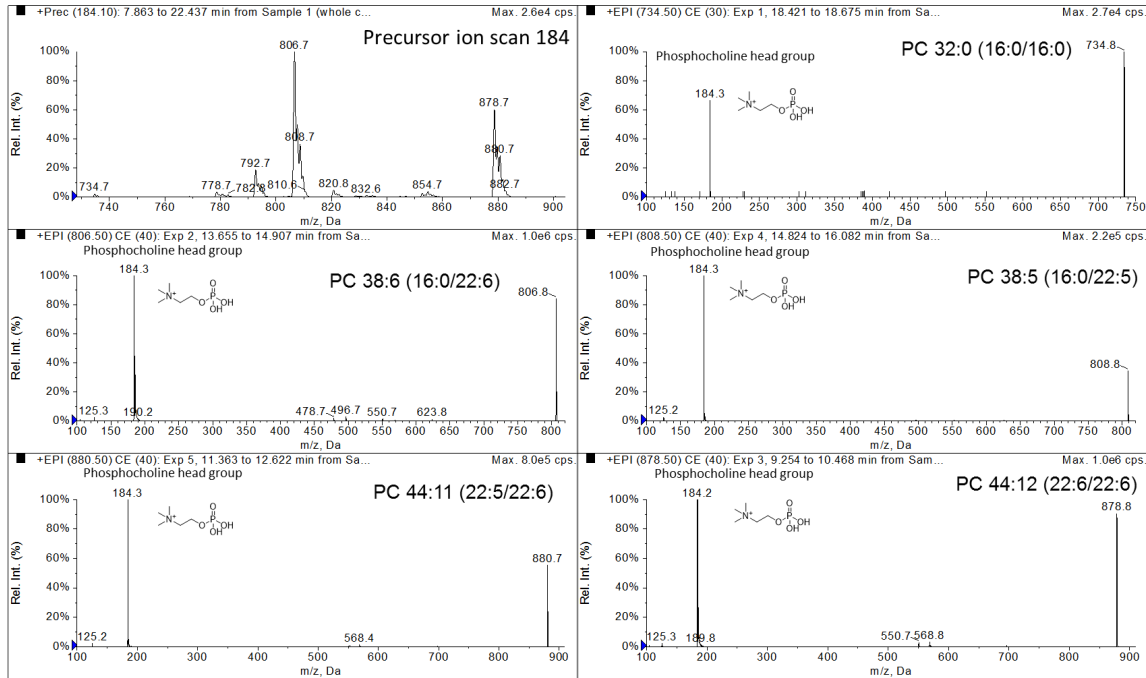


Supplementary Figure S3. Identification of phospholipids in LC-ESI MS/MS

(A) Precursor ion scan at m/z 184, corresponding to phosphocholine head group, and MS/MS analysis for PC identification



(B) Neutral loss scan at m/z 141, corresponding to phosphoethanolamine head group, and MS/MS analysis for PE identification.

