

Supplementary Presentation.- Figures S1 and S2

A microarray study of carpet-shell clam (*Ruditapes decussatus*) shows common and organ-specific growth-related gene expression differences in gills and digestive gland.

Carlos Saavedra, Massimo Milan, Ricardo B. Leite, David Cordero, Tomaso Patarnello, Leonor Cancela and Luca Bargelloni

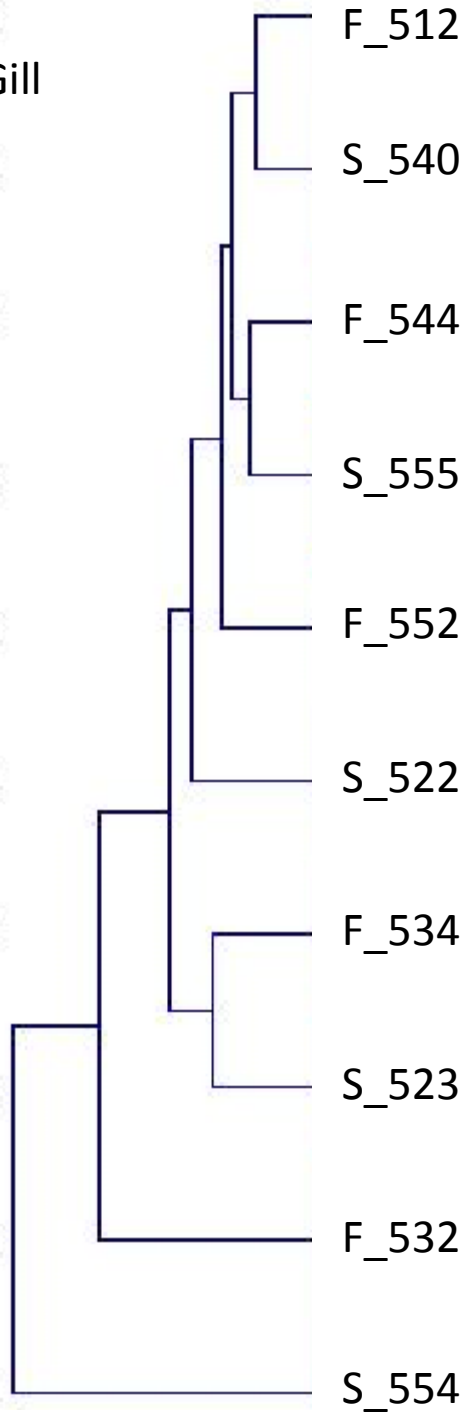
Figure captions

Figure S1. Results of average linkage clustering based on Pearson correlation coefficients for the gill and the digestive gland expression data.

Figure S2. Results of the principal component analysis of the expression data in gills and digestive gland. Only the plots corresponding to the three first components are shown.

Fig. S1

Gill



Digestive Gland

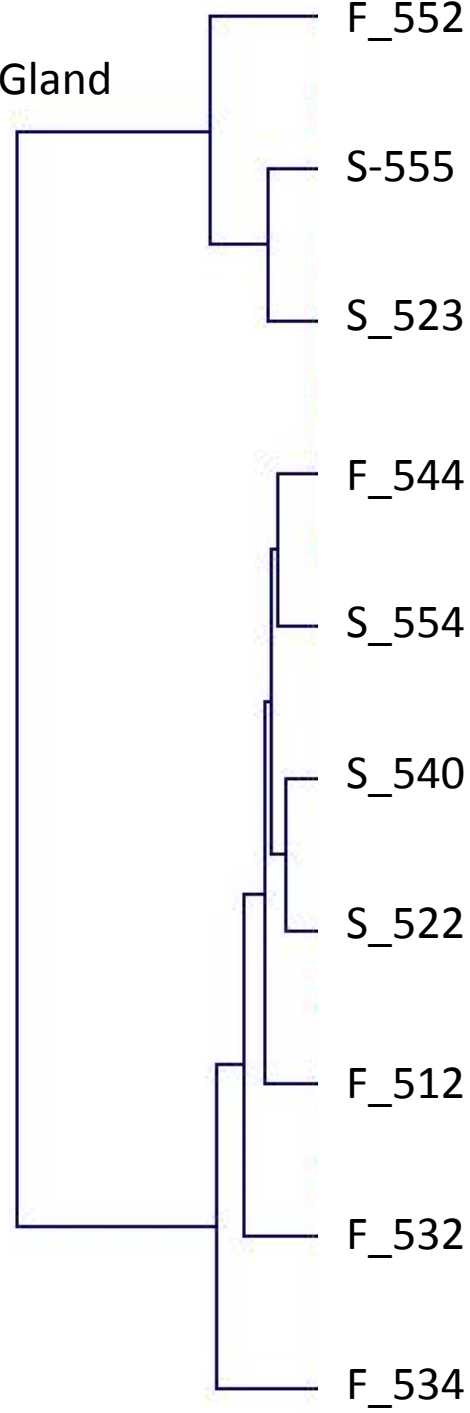
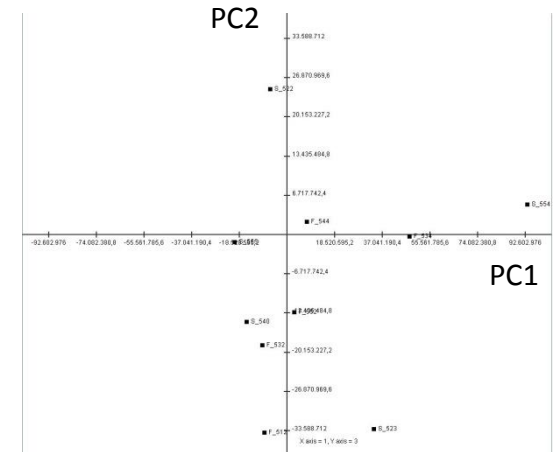
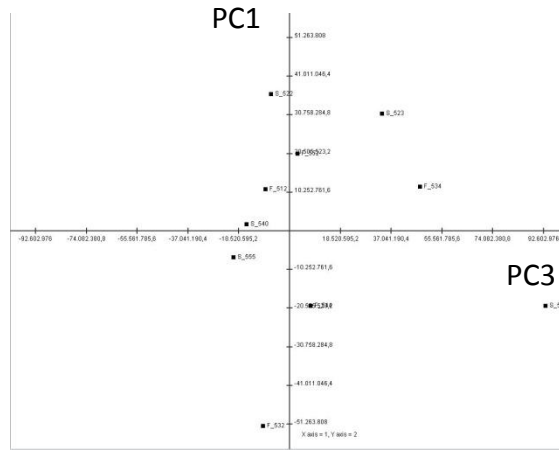
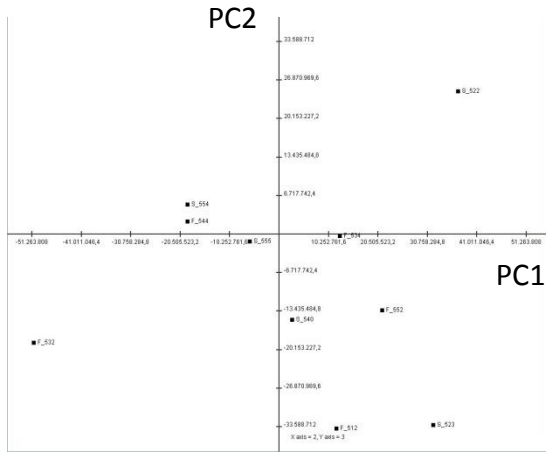


Fig. S2

Gills



Digestive gland

