

Supplementary Materials: Human mesenchymal stem cells growth and differentiation on piezoelectric poly(vinylidene fluoride) microsphere substrates

R. Sobreiro Almeida, M. N. Tamaño-Machiavello, E. O. Carvalho, L. Cordón, S. Doria, L. Senent, D. M. Correia, C. Ribeiro, S. Lanceros-Méndez, R. S. i Serra, J. L. Gomez Ribelles, A. Sempere

Figure S1 shows representative SEM images of the PVDF microparticles electrospayed on a PVDF film at low or at high density (Figure S1a and S1b) and the corresponding size distribution (Figure S1c).

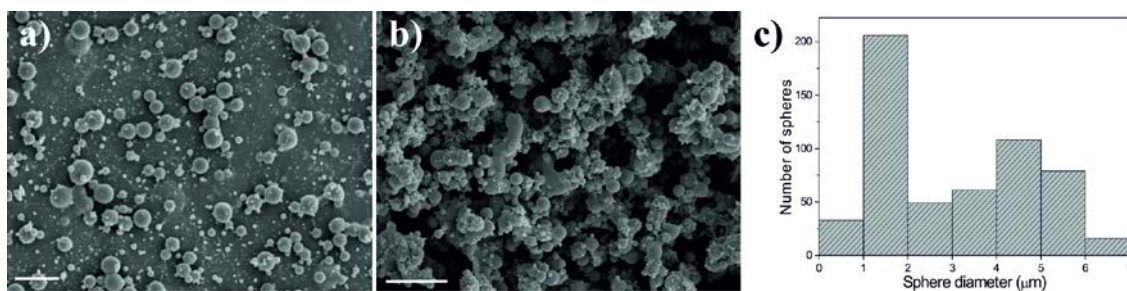


Figure S1 - Morphology of PVDF microspheres electrospayed on PVDF films at a)

low density and b) high density. The scale bar is 10 μm for both samples. c)

Microspheres size distribution obtained for the described electrospay conditions.