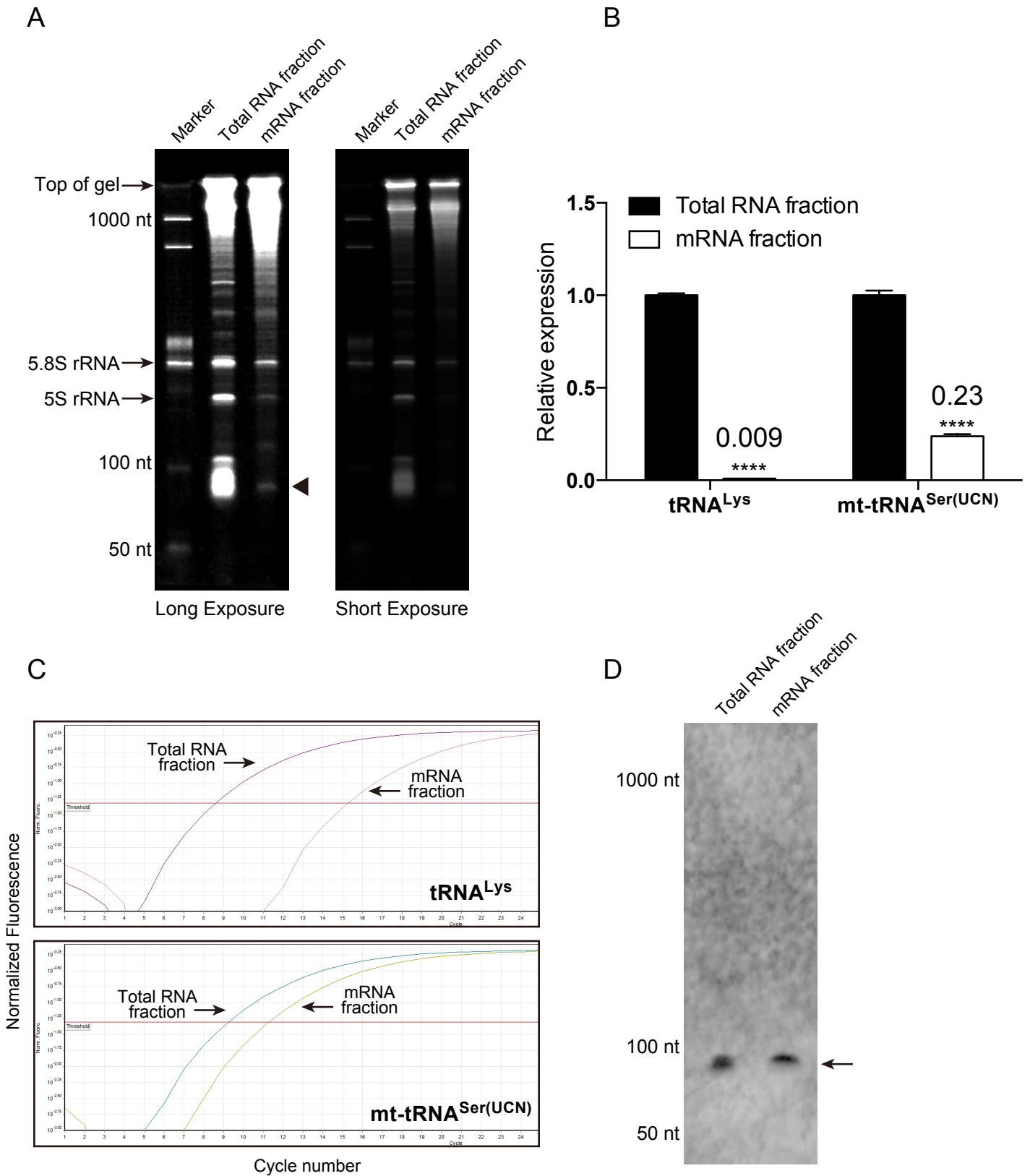


Figure S1



Supplementary Figure Legend

Figure S1. Signal of ms^2i^6A modification was not detected in mRNA fraction except for the tRNA region.

(A) Total RNA and mRNA fractions were separated by electrophoresis in denaturing TBE-UREA gel. Arrowhead indicates the position corresponding to tRNA. Note that tRNA was still detectable in mRNA fraction. (B) Quantitative PCR analysis of the level of cytosolic tRNA^{Lys} and mt-tRNA^{Ser(UCN)} in total RNA and mRNA fractions. Numbers above the bars indicate the fold change of each tRNA in mRNA fraction when compared to total RNA fraction. $n = 3$ each. $****P < 0.0001$ by Student's t-test. (C) Representative PCR amplification curve of tRNA^{Lys} and mt-tRNA^{Ser(UCN)} in total RNA and mRNA fractions. Note that substantial amounts of tRNA^{Lys} and mt-tRNA^{Ser(UCN)} remained even after extensive purification. (D) Total RNA and mRNA were transferred to the membrane followed by immunoblotting with anti- ms^2i^6A antibody. Note that anti- ms^2i^6A antibody only detected modifications in tRNA, but not in mRNA.