

Supplementary Figures

Reduced cell size, chromosomal aberration and altered proliferation rates are characteristics and confounding factors in the STHdh cell model of Huntington disease

Elisabeth Singer^{1,2,#}, Carolin Walter^{1,2,#}, Jonasz J. Weber^{1,2,#}, Ann-Christin Krahl³, Ulrike A. Mau-Holzmann¹, Nadine Rischert^{1,2}, Olaf Riess^{1,2}, Laura E. Clemensson^{1,2,#} and Huu P. Nguyen^{1,2,#,*}

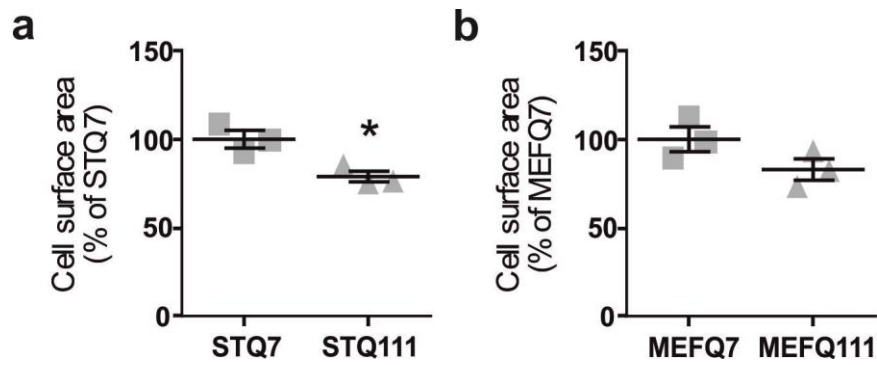
1 Institute of Medical Genetics and Applied Genomics, University of Tuebingen, 72076 Tuebingen, Germany

2 Centre for Rare Diseases, University of Tuebingen, 72076 Tuebingen, Germany

3 Paediatric Hematology and Oncology, University Children's Hospital Tuebingen, 72076 Tuebingen, Germany.

These authors contributed equally

* Corresponding author: Dr. Huu Phuc Nguyen, Institute of Medical Genetics and Applied Genomics, Centre for Rare Diseases, University of Tuebingen, Calwerstrasse 7, Tuebingen, Germany, Phone: +49 7071 29 83210, Fax: +49 7071 29 5228, Email: hoa.nguyen@med.uni-tuebingen.de



Supplementary Figure S1: Cell size differences of detached cells can be manually determined in *STHdh* cells

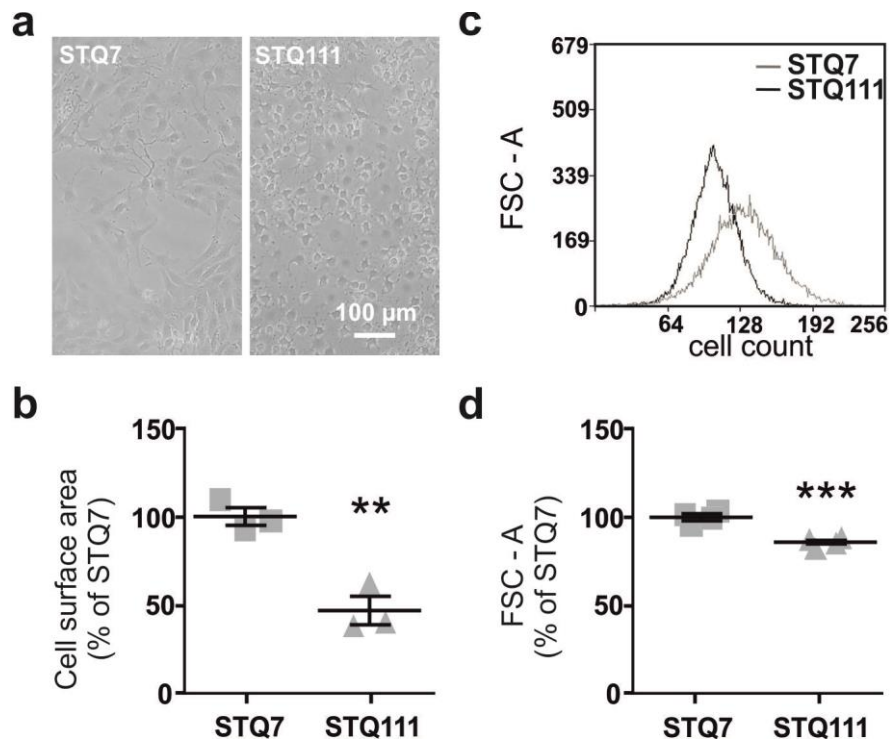
(a) ImageJ-based cell surface area quantification of *STHdh*^{Q7/Q7} (STQ7) and *STHdh*^{Q111/Q111}

(STQ111) cells, detached from the culture dish by gentle trypzination, taken from cell suspension loaded to a Neubauer chamber; n = 3 experiments, each with 3 replicates per

cell line, unpaired *t*-tests; * *P* < 0.05 **(b)** ImageJ-based cell surface area quantification of

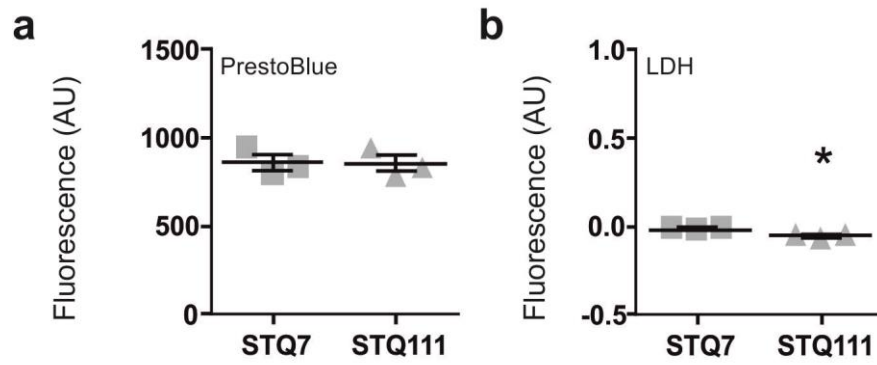
detached *MEFHdh*^{Q7/Q7} (MEFQ7) and *MEFHdh*^{Q111/Q111} (MEFQ111) cells; n = 3 experiments,

unpaired *t*-test.



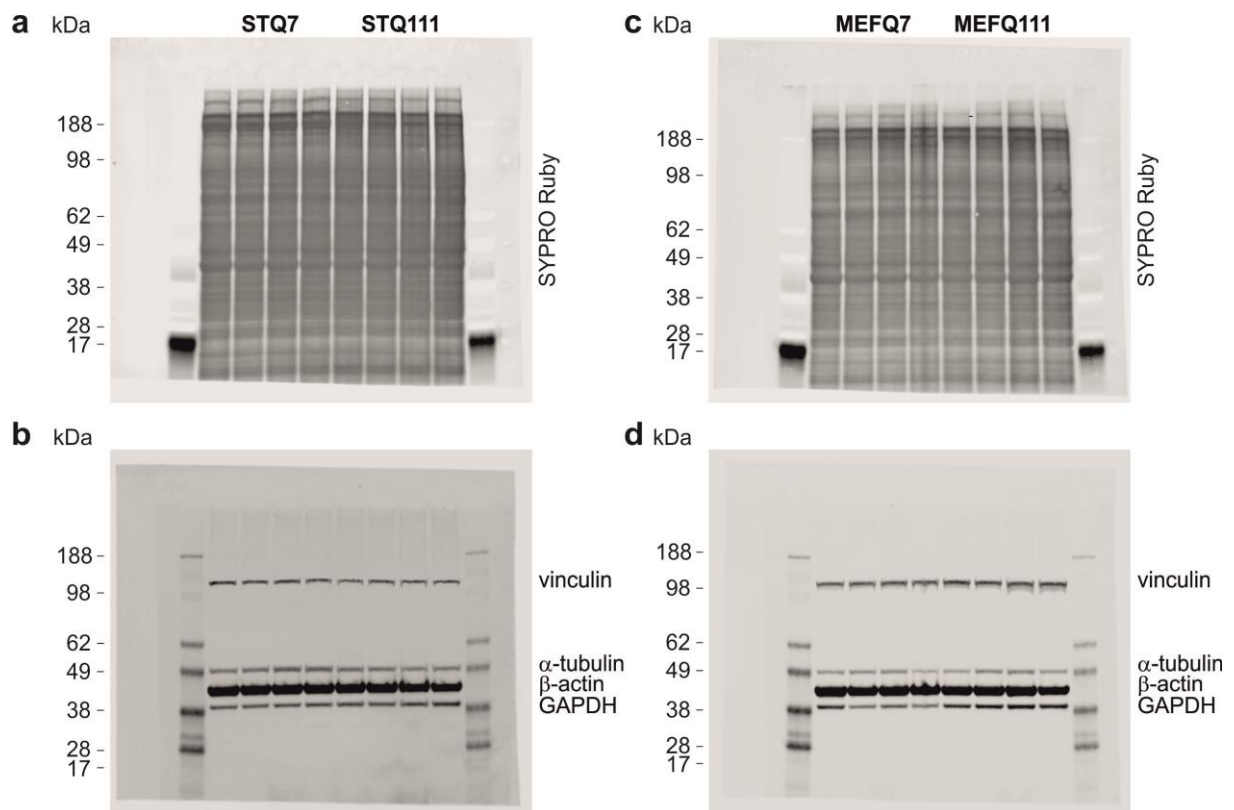
Supplementary Figure S2: Neuron-like, differentiated *STHdh* cells show the same cell size phenotype

(a) Representative picture of live, differentiated *STHdh*^{Q7/Q7} (STQ7) and *STHdh*^{Q111/Q111} (STQ111) cells and **(b)** ImageJ-based cell surface area quantification of the somata of cells, attached to the culture dish after 48 hours of differentiation; n=3 experiments, unpaired *t*-tests; ** $P < 0.01$ **(c)** Representative histograms of *STHdh* cells with corresponding **(d)** quantification of the cell size of live cells in suspension, based on the relative mean forward scatter area (FSC-A); n = 4 experiments, unpaired *t*-tests; *** $P < 0.001$.



Supplementary Figure S3: Differentiation into neuron-like cells results in comparable results between *STHdh* and *MEFHdh* cells

Results from the cell size- and cell number-dependent tests for 24 hours differentiated *STHdh* cells: **(a)** PrestoBlue®, n = 3 experiments and **(b)** LDH assay, n = 3 experiments. Unpaired *t*-tests; * *P* < 0.05.



Supplementary Figure S4: Chromosomal abnormalities impede the interpretation of western blot results in *STHdh* cells

Full-length blots of (a) SYPRO Ruby staining and (b) analysed proteins from *STHdh* cell lysates (c and d) respective results from *MEFHdh* cell lysates.