

Supplementary Materials: Modeling *GATAD1*-Associated Dilated Cardiomyopathy in Adult Zebrafish

Jingchun Yang ¹, Sahrish Shah ¹, Timothy M. Olson ^{2,3} and Xiaolei Xu ^{1,2,*}

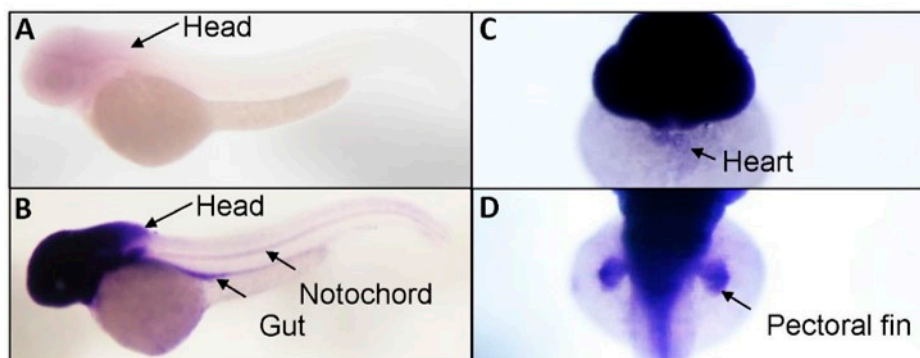


Figure S1. Tissue-specific expression of *gatad1* transcripts was revealed by *in situ* hybridization in 2 dpf zebrafish embryos. Short-time stain only revealed head expression of *gatad1* (A), but long time stain show *gatad1* expression in gut, notochord, heart and pectoral fin (B–D).