

SUPPLEMENTAL MATERIAL

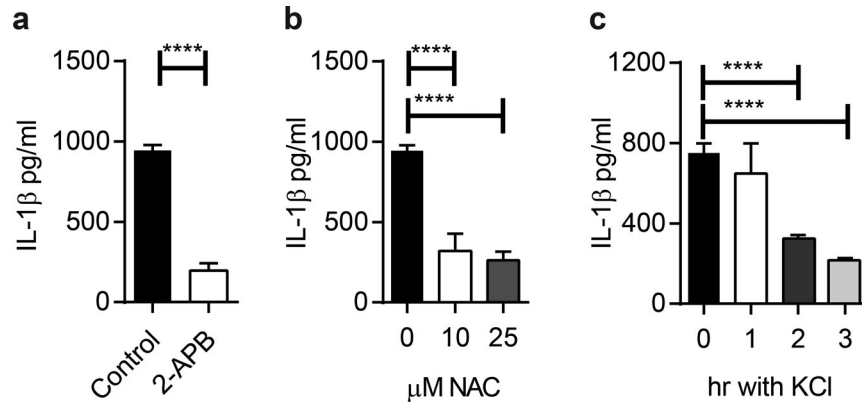
Swanson et al., <https://doi.org/10.1084/jem.20171749>

Figure S1. **cGAMP induces K^+/Ca^{2+} - and ROS-dependent inflammasomes.** (a and b) IL-1 β ELISAs from supernatants of BMDMs primed with LPS and treated with vehicle or 2-APB (a) or *n*-acetyl-cysteine (NAC; b) at the indicated concentrations followed by transfection with 2'3'-cGAMP for 6 h. (c) IL-1 β ELISAs from BMDMs primed with LPS, followed by transfection with 2'3'-cGAMP. Extracellular KCl added for the last 1, 2, or 3 h of induction. $n = 3$ independent experiments. Error bars, SD; ****, $P < 0.0001$.

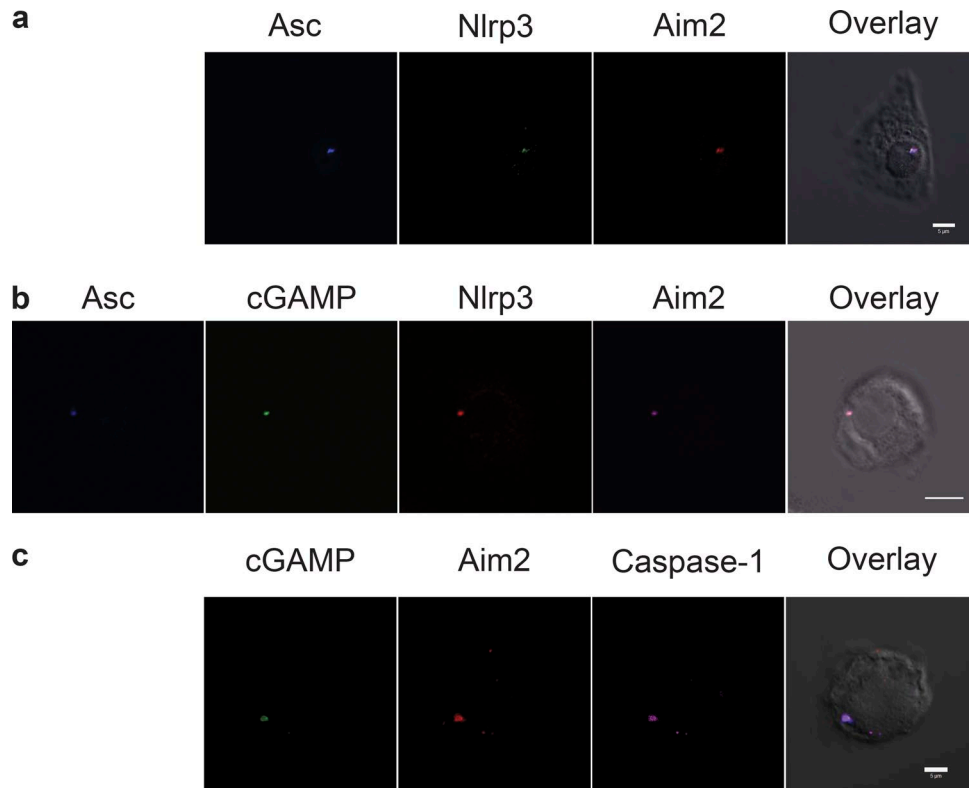


Figure S2. **cGAMP induces complexes containing both NLRP3 and AIM2.** Confocal microscopy of JAWSII cells expressing AIM2-Flag pulsed with doxycycline during LPS priming. (a–c) Cells were transfected with 2'3'-cGAMP (a), a 30:1 mixture of 2'3'-cGAMP and fluorescein-labeled 2'3'-cGAMP (b), or rhodamine-dAdT followed by FLICA-660 (c). Cells were labeled with primary antibodies to Asc, Nlrp3, and Flag (for AIM2-Flag) followed by Alexa Fluor-labeled secondary antibodies. Shown are pseudocolored images. Bars, 5 μ m.

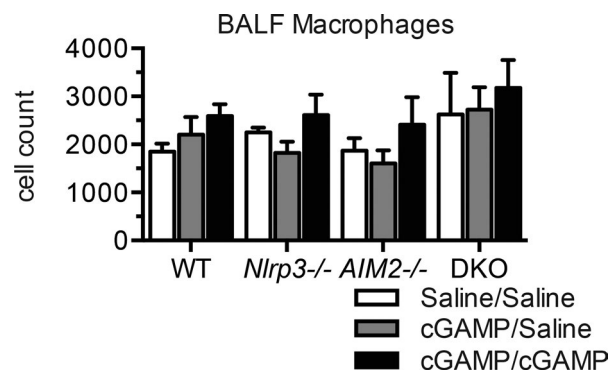


Figure S3. **Bronchiolar macrophage cell count after cGAMP administration.** WT, *Aim2*^{-/-}, *Nlrp3*^{-/-}, and *Aim2*^{-/-} *Nlrp3*^{-/-} DKO mice were intranasally dosed with 2'3'-cGAMP followed by a second dose 24 h later. 4 h after the second dose, BALF was collected, and cells were cytospun onto slides and stained with Diff-Quick solution for cell differentiation. Shown are total counts of bronchial macrophages. WT, *n* = 17; *Aim2*^{-/-}, *n* = 10; *Nlrp3*^{-/-}, *n* = 8; *Aim2*^{-/-} *Nlrp3*^{-/-} DKO, *n* = 8. Results are presented as the mean \pm SEM.