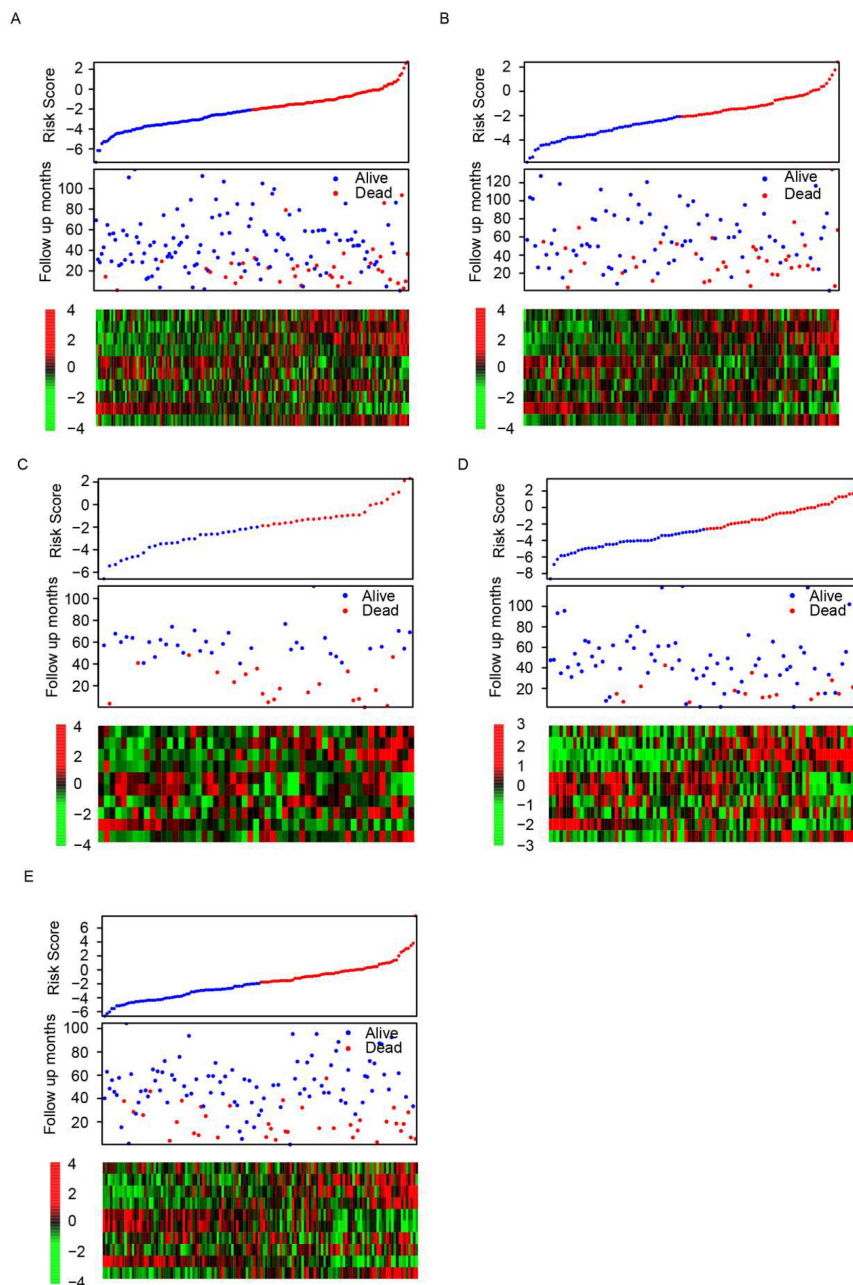


Regulatory activity based risk model identifies survival of stage II and III colorectal carcinoma

SUPPLEMENTARY MATERIALS



Supplementary Figure 1: The detailed survival information and transcription activity of candidates in five independent datasets (A) GSE14333, (B) GSE17536, (C) GSE17537, (D) GSE33113, (E) GSE37892).