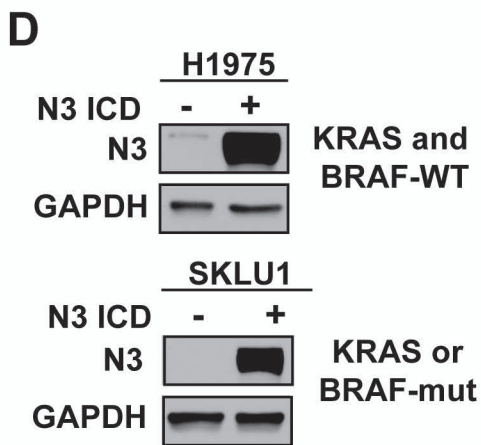
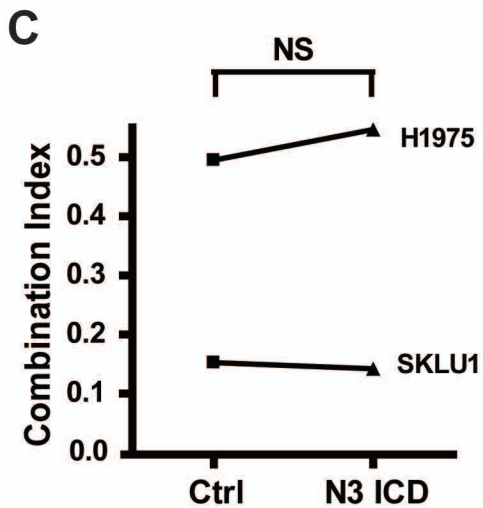
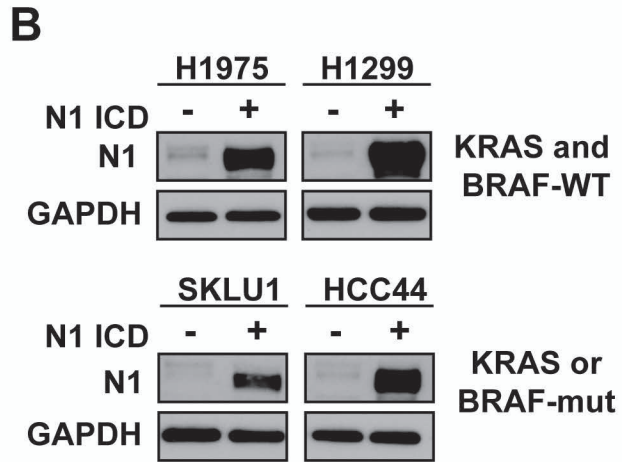
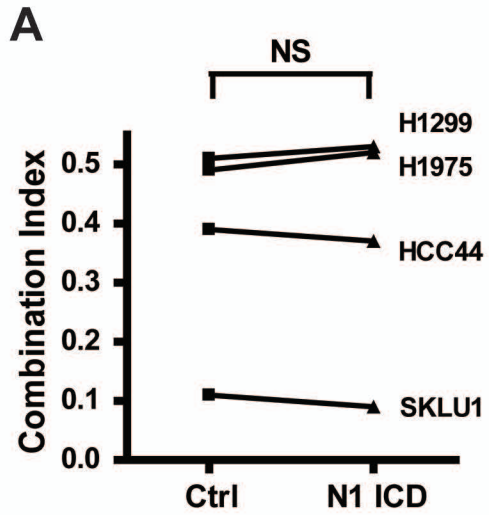


Supplementary Figure S3



Supplementary Figure S3.

Synergy between paclitaxel and BMS-906024 is not modulated by either activated Notch1 or Notch3 overexpression. **A**, The synergistic combination index (CI) values for four NSCLC cell lines were unchanged when Notch 1 intracellular domain (N1 ICD) was overexpressed in comparison to the pcDNA3.1 empty vector (Ctrl). **B**, western blot demonstrating exogenous overexpression of activated Notch1 (N1). **C**, the synergistic CI values for two NSCLC cell lines were unchanged when Notch3 intracellular domain (N3 ICD) was overexpressed in comparison to the pCLE empty vector (Ctrl). **D**, western blot demonstrating exogenous overexpression of activated Notch3 (N3). NS, not significant.