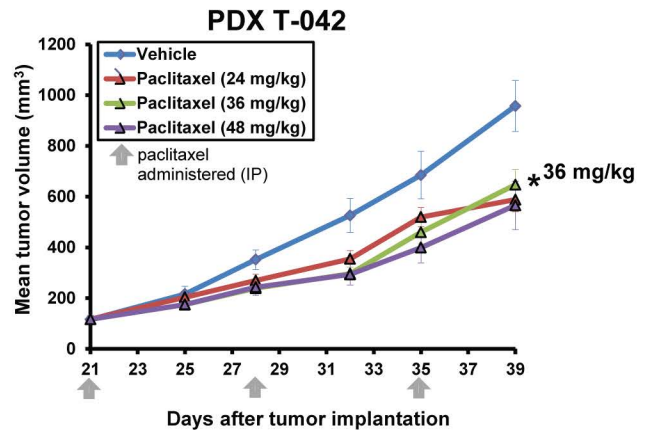
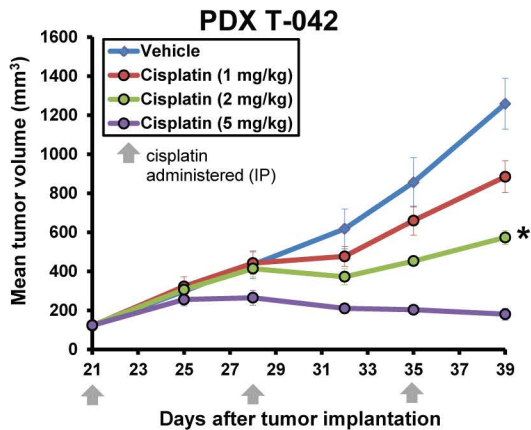
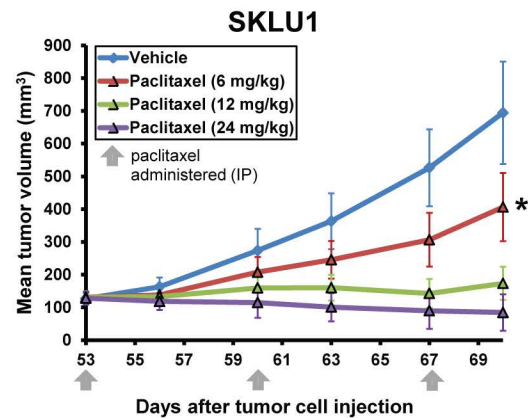
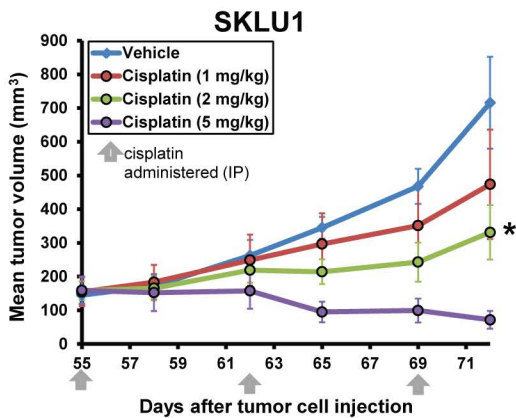
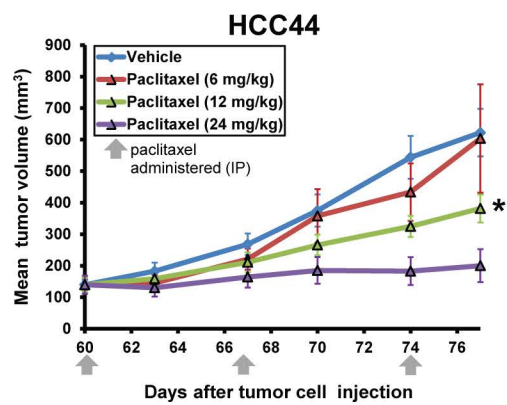
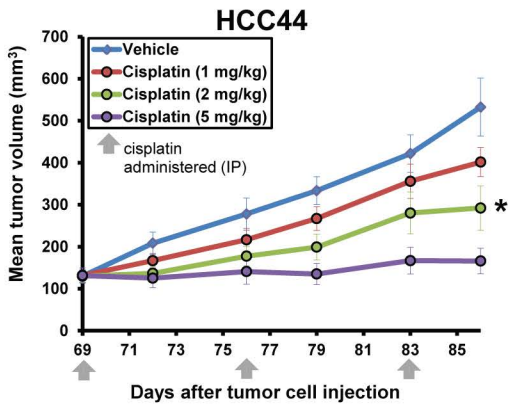
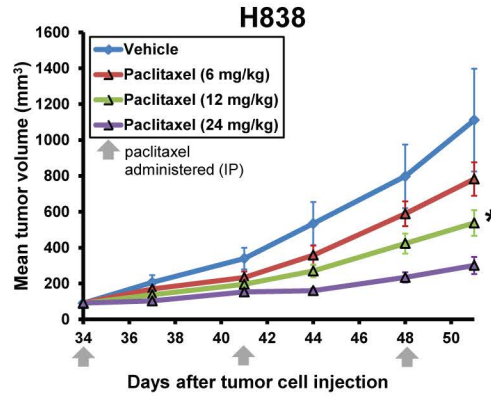
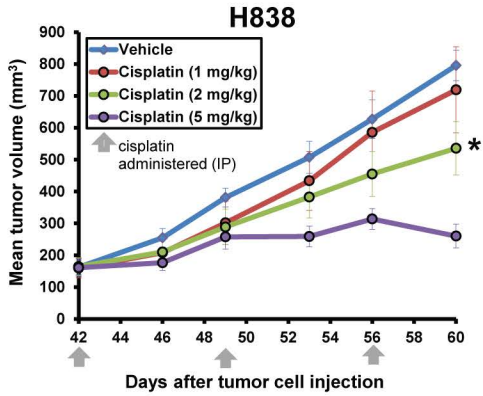


# Supplementary Figure S4



#### **Supplementary Figure S4.**

*In vivo* tumor growth curves of NSCLC cell line- or patient-derived xenografts. Vehicle, cisplatin or paclitaxel was administered by intraperitoneal injection once per week (shown by arrows) at the doses indicated. The dose that decreased tumor volume relative to vehicle control by approximately 50% at the end of treatment (indicated by asterisk) was utilized in *in vivo* studies. N = 3-5 mice per group for each experiment.