

**A**

hTwa1 M-SYAEKPDEITKDEWMEKLNHLVQRADMNRLIMNYLVTEGFKEAAEKFRMESGIEP  
 Twa1a M-SYSEKPEDITKEEWMDKLNNVHIQRADMNRLIMNYLVTEGFKEAAEKFRMESGIEP  
 Twa1b MMSYAEKPEDITRDEWMEKLNNVHIQRADMNRLIMNYLVTEGFKEAAEKFRMESGIEP

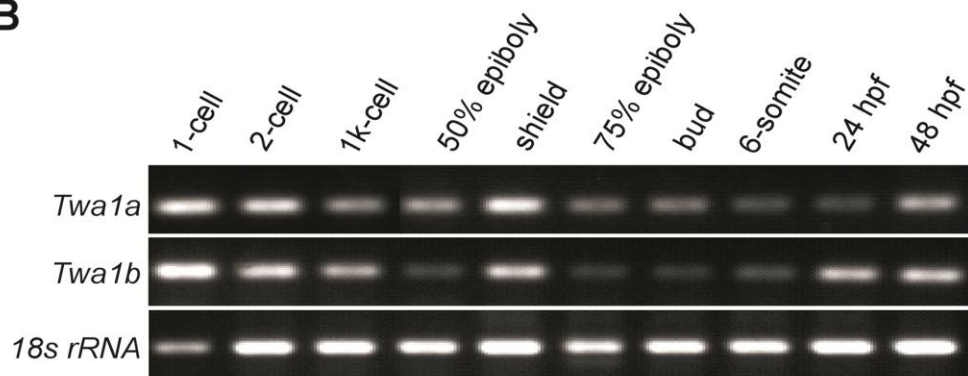
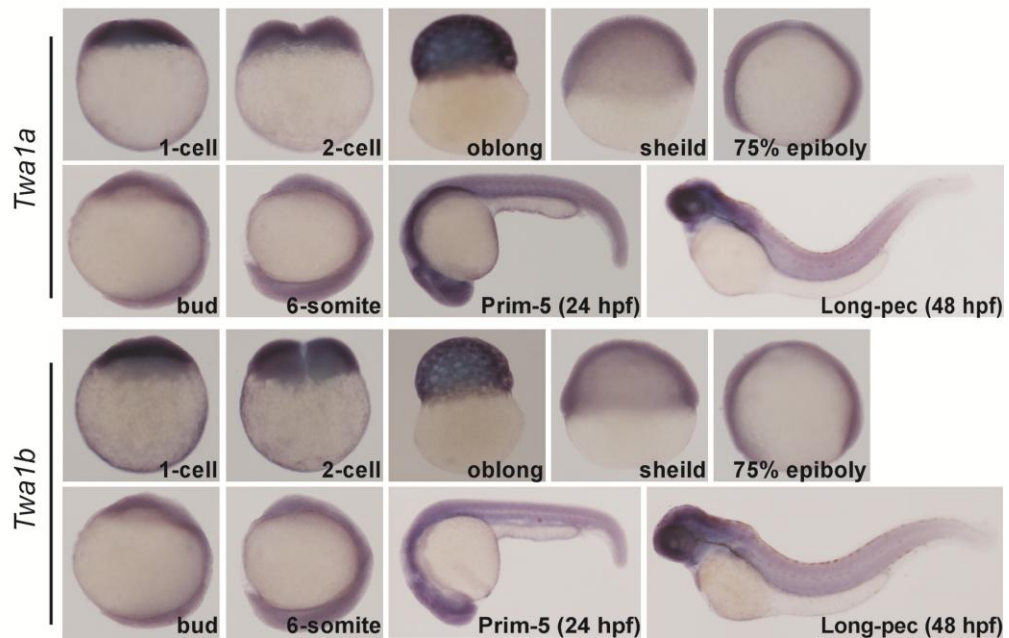
hTwa1 SVDLETLDERIKIREMILKGQIQEAIALINSLHPELLDTNRYLYFHLQQQHLLIELIRQ  
 Twa1a NVDLDSLDERIKIREMVLKGQIQEAIALINSLHPELLDTNRYLYFHLQQQHLLIELIRL  
 Twa1b SVDLDSLDERIKIREMVLKGQIQEAIALINSLHPELLDTNRYLYFHLQQQHLLIELIRL

CRA

hTwa1 RETEAALFAQTQLAEQGEESRECLTEMERTLALLAFDSPAESPFGLLHTMQRQKVV  
 Twa1a RETEAALFAQSQLAEQGEESRECLTEMERTLALLAFDNPEESPFGLLNMQRQKVV  
 Twa1b RETEAALFAQTQLAEQGEESRECLTEMERTLALLAFDNPEESPFGLLNMQRQKVV

CRA

hTwa1 SEVNQAVLDYENRESTPKLAKLLKLLLWAQNELDQKKVKYPKMTDLSKGVIEEPK  
 Twa1a SEVNQAVLDYENRESTPKLAKLLKLLLWAQNELDQKKVKYSRMTDLSKGTIEDPK  
 Twa1b SEVNQAVLDYENRESTPKLAKLLKLLLWAQNELDQKKVKYPKMTDLSKGTIEDPK

**B****C**

**Supplementary information, Figure S10** Characterization of zebrafish homologues of *Twa1*, *Twa1a* and *Twa1b*. (A) The deduced amino acid sequences of human *Twa1* (*hTwa1*) and zebrafish *Twa1a* (*Twa1a*) and *Twa1b* (*Twa1b*). The CRA domain is underlined. (B) RT-PCR was performed on total RNAs isolated from the indicated developmental stages of zebrafish embryos. (C) The embryos were fixed at the indicated stages and processed for whole mount *in situ* hybridization with *Twa1a* and *Twa1b* probes. The embryos are shown in lateral view. hpf, hours post-fertilization; Prim-5, Primordia-5; Long-pec, Long-pectoral fin.