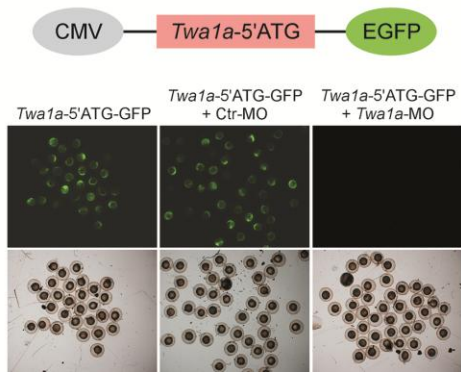
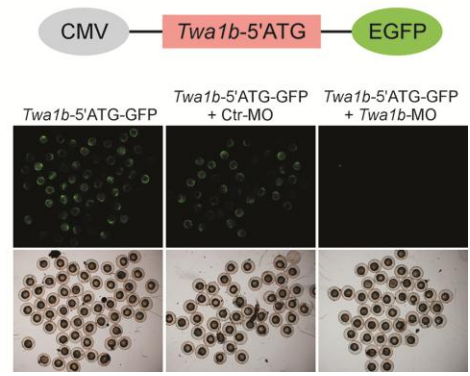


**A****B**

**Supplementary information, Figure S11** Effectiveness of the morpholinos targeting *Twala* and *Twalb* mRNA (*Twala*-MO and *Twalb*-MO) in zebrafish embryos. (**A, B**) The indicated MOs and constructs were injected into embryos at the one-cell stage. GFP signals were observed at 24 hpf. The plasmids contain zebrafish *Twala*- or *Twalb*-5'ATG region carrying the targeting sequence of their corresponding MOs, which are fused with EGFP and driven by a cytomegalovirus (CMV) promoter.